

CANNED AND CURED FISH

Pilchard

PILCHARD PACK AND BYPRODUCTS: The new pilchard (California sardine) season opened on an optimistic note as the production of 7,404 tons during August was 26 percent larger than the landings for the first month of the 1946 season, according to the California Division of Fish and Game and the California Sardine Products Institute. As was the case last year, fishing was restricted to the San Francisco and Monterey areas. Fishing was not permitted in the San Pedro area until October 1.

California Sardine Landings, Canned Pack and Byproducts

Item	Unit	M O N T H		S E A S O N	
		1 9 4 7	1 9 4 6	1947-48	1946-47
		August	August	August	August
Landings	Tons	7,404	5,861	7,404	5,861
		<u>Aug. 1-28, 1947</u>	<u>Aug. 1-29, 1946</u>		
Canned	1 lb. ovals-48 per case	45,424	26,425	45,424	26,425
	1 lb. talls-48 per case	29,223	26,902	29,223	26,902
	1/2 lb. fillets-48 per case	110	2,924	110	2,924
	1/2 lb. round-96 per case	414	407	414	407
	Unclassified	39,139	2,986	39,139	2,986
	TOTAL, Actual Cases	114,310	59,644	114,310	59,644
Meal	Tons	<u>August</u> 872	<u>August</u> 781	872	781
Oil	Gallons	164,575	160,873	164,575	160,873

One result of the increase in landings was a substantial increase in the canned pilchard pack, which totaled 114,310 actual cases. Increases were also noted in the production of meal and oil, according to the same sources.



Salmon

SALMON PACK: The pack of Alaska canned salmon for the season to August 30, amounted to 3,845,370 standard cases, according to Alaska Salmon Pack Report No.

Alaska Salmon Pack to and including August 30, 1947

District	King	Red	Pink	Chum	Coho	Total
Western	13,792	1,352,570	2	40,955	345	1,407,664
Central	36,565	468,838	953,474	168,363	50,161	1,677,401
Southeastern	3,971	54,284	484,973	166,490	50,587	760,305
Total 1947, Aug. 30	54,328	1,875,692	1,438,449	375,808	101,093	3,845,370
All districts--						
1946, Aug. 31	31,755	1,038,647	1,378,785	455,745	133,348	3,038,280
1945, Sept. 1	37,108	1,166,510	2,211,966	678,334	155,577	4,249,495
5-year average, Sept. 1						
1942-46, inclusive	38,000	1,331,364	2,140,183	762,616	159,948	4,432,111
Total pack, 1946	31,874	1,040,747	2,041,636	581,763	184,088	3,880,108
" " , 1945	42,514	1,177,523	2,239,643	689,001	201,790	4,350,471
5-year average,						
1942-46, inclusive	42,219	1,339,307	2,305,352	819,212	219,465	4,725,555

10 issued by the Seattle Office of the Market News Service. This pack, although over 800,000 cases more than that for the same period last year, is approximately 600,000 cases short of the average for the 5 preceding years. The factor responsible for the considerable increase was the pack of red salmon, as the gains made in the packs of kings and pinks were more than offset by the lower packs of chums and cohoes.



Shrimp

SHRIMP PACK: The season for fishing for shrimp in the inside and outside waters of Louisiana opened on August 11. Shrimp fishing in these waters had been prohibited, starting on June 10.

The pack of canned shrimp, by those plants under the Seafood Inspection Service of the U. S. Food and Drug Administration for the new season to August 30 amounted to 38,192 standard cases, only 65 percent of the pack on the corresponding date last year. It also fell far short of the average pack for the three previous years.

Wet and Dry Pack Shrimp in all Sizes in Tin and Glass--Standard Cases*

M O N T H		S E A S O N		3-year average 1944-47 seasons incl.
1947 July 1-Aug. 30	1946 July 1-Aug. 31	1947-48 July 1-Aug. 30	1946-47 July 1-Aug. 31	July 1-Aug. 31
38,192	58,406	38,192	58,406	60,319

*All figures on basis of new standard case--48 No. 1 cans with 7 oz. per can in the wet pack and 6½ oz. per can in the dry pack.



Tuna and Mackerel

TUNA AND MACKEREL PACK: During August, 776,647 standard cases of tuna were produced by California tuna packers, according to the California Division of Fish and Game. Although this was almost 62,000 cases less than the July pack, it was

California Pack of Tuna and Mackerel--Standard Cases*

Item	August 1947	July 1947	August 1946	Eight mos. ending with August--	
	Cases	Cases	Cases	1947 Cases	1946 Cases
Tuna:					
Albacore	143,301	53,800	143,984	204,019	326,571
Bluefin	125,268	35,193	54,073	213,380	290,731
Bonito	39,458	151,938	25,327	220,741	30,576
Striped	131,676	107,127	97,327	501,119	340,128
Yellowfin	167,989	363,975	74,069	1,934,926	1,484,169
Yellowtail	43,253	16,655	7,235	78,335	34,665
Flakes	119,433	108,520	92,817	611,590	644,842
Tonno	6,269	1,410	-	19,280	-
Total	776,647	838,618	494,832	3,783,390	3,151,682
Mackerel	33,608	9,175	2,428	259,716	57,337

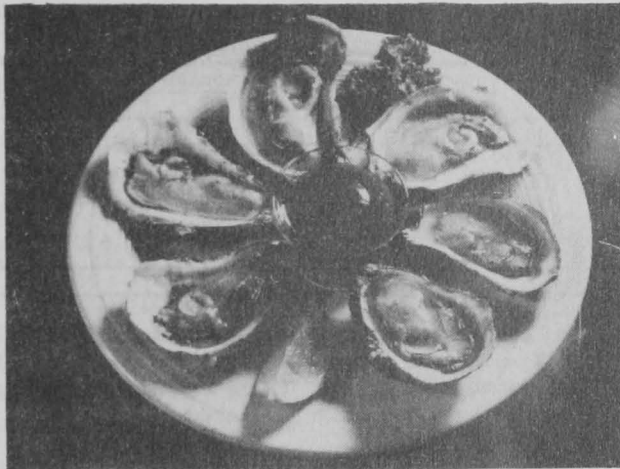
*Standard cases of tuna represent cases of 48 7-ounce cans, while those of mackerel represent cases of 48 1-pound cans.

57 percent greater than the pack of August 1946. The pack of albacore this year was almost the same as that of last year, but substantial gains in the packs of bluefin, striped, and yellowfin tuna, together with yellowtail, accounted for most of the increase this year. Normally, the pack during August is greater than that of July, but for the past 2 years, the reverse has been true.

The pack of 33,608 standard cases of mackerel during August makes this year's total more than $4\frac{1}{2}$ times that for the corresponding period in 1946.



OYSTERS ON THE HALF-SHELL



	36 shell oysters	
$\frac{3}{4}$ cup tomato catsup		$\frac{1}{3}$ teaspoon salt
$\frac{1}{4}$ cup lemon juice		6 drops tobasco sauce
3 tablespoons minced celery		dash cayenne

Shuck oysters. Combine all remaining ingredients for cocktail sauce and chill. Arrange a bed of crushed ice in shallow bowls or soup plates. Place six half-shell oysters on the ice with a small container of cocktail sauce in the center. Garnish with lemon wedges. Serves 6.