

# CANNED AND CURED FISH

## Salmon

**SALMON PACK:** The season's pack of Alaska canned salmon reached 1,827,746 standard cases on August 3. This was 1,033,557 cases below production on August 4, 1945, according to Alaska Salmon Pack Report No. 7, issued by the Service's Market News Office at Seattle. Total cases of canned red salmon showed a decline for the season of 128,825 cases, compared with the 1945 season to August 4, while pink salmon production dropped 662,726 cases and chum salmon fell 231,349 cases.

A gain in the red salmon pack in the Chignik area was more than offset by a large decline in the Kodiak run; while the reduction in the pack of pink and chum salmon to August 3 was caused mainly by low production in the Prince William Sound area.

Alaska Salmon Pack to and including August 3, 1946

District	Red	Pink	Chum	Coho	King	Total
Western	646,944	4,039	36,948	1,478	5,055	694,464
Central	302,490	412,787	147,467	52,927	24,384	940,055
Southeastern	33,568	53,496	86,137	18,467	1,559	193,227
Total 1946, August 3	983,002	470,322	270,552	72,872	30,998	1,827,746
All districts--						
1945, August 4	1,111,827	1,133,048	501,901	77,727	36,800	2,861,303
1944, August 5	1,478,443	910,382	626,561	72,543	33,408	3,121,337
5-year average, August 3	1,248,833	893,043	485,908	76,411	37,276	2,741,471
Total pack, 1945	1,168,615	2,212,941	680,168	204,054	37,117	4,302,895
" " , 1944	1,581,416	2,092,632	994,487	187,499	37,025	4,893,059
5-year average	1,362,352	2,816,637	847,780	256,428	43,229	5,326,426



## Tuna and Mackerel

**TUNA AND PACIFIC MACKEREL PACK:** The production of canned tuna by California packers during July totaled 707,374 standard cases according to the California Division of Fish and Game. This was only 383 standard cases more than the June pack but was 69 percent above the production in July 1945. The total pack during the first 7 months of 1946 amounted to 2,656,850 standard cases, 49 percent above the production for the corresponding period in 1945. In both the July and 7-month production, the pack of every species was greater in 1946 than in 1945. The pack of tuna flakes was higher, too, but there was no production of tonno style during the first 7 months of 1946.

There was no production of canned mackerel during July and only 22 cases were packed during July 1945. The 7-month pack of 54,909 standard cases was 10 percent below the pack for the corresponding months in 1945.

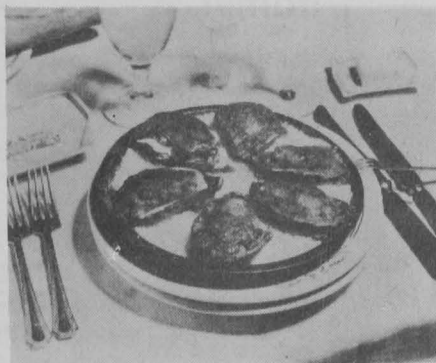
## California Pack of Tuna and Mackerel--Standard Cases\*

Item	July	June	July	Seven mos. ending with July--	
	1946	1946	1945	1946	1945
	Cases	Cases	Cases	Cases	Cases
<b>Tuna:</b>					
Albacore	174,401	8,161	86,807	182,587	88,255
Bonito	210	789	80	5,249	2,001
Bluefin	76,458	89,586	48,720	236,658	180,816
Striped	74,197	64,687	22,612	242,801	104,865
Yellowfin	213,275	384,078	143,935	1,410,100	892,047
Yellowtail	2,893	1,322	174	27,430	1,153
Flakes	165,940	158,368	102,844	552,025	501,083
Tonno style	-	-	14,180	-	16,198
Total	707,374	706,991	419,352	2,656,850	1,786,418
<b>Mackerel</b>					
	-	1,196	22	54,909	61,072

\*Standard cases of tuna represent cases of 48 7-ounce cans, while those of mackerel represent cases of 48 1-pound cans.



## OYSTERS a la ROCKEFELLER



3 doz. large oysters in the shell  
 $\frac{1}{2}$  lb. bacon, sliced thin

Bread crumbs  
 Paprika

Wash oyster shells thoroughly. Open oysters, discarding the flatter shell. Separate oysters from the curved shell, but allow each to remain loosely in the shell. Cover oysters with bread crumbs and season with paprika, cover each oyster with bacon, place oysters (in their shells) in one layer under a broiler flame until the bacon is cooked through. Serve oysters in the shells.

--Fishery Circular No. 21