

Fig. 2 - Axle.

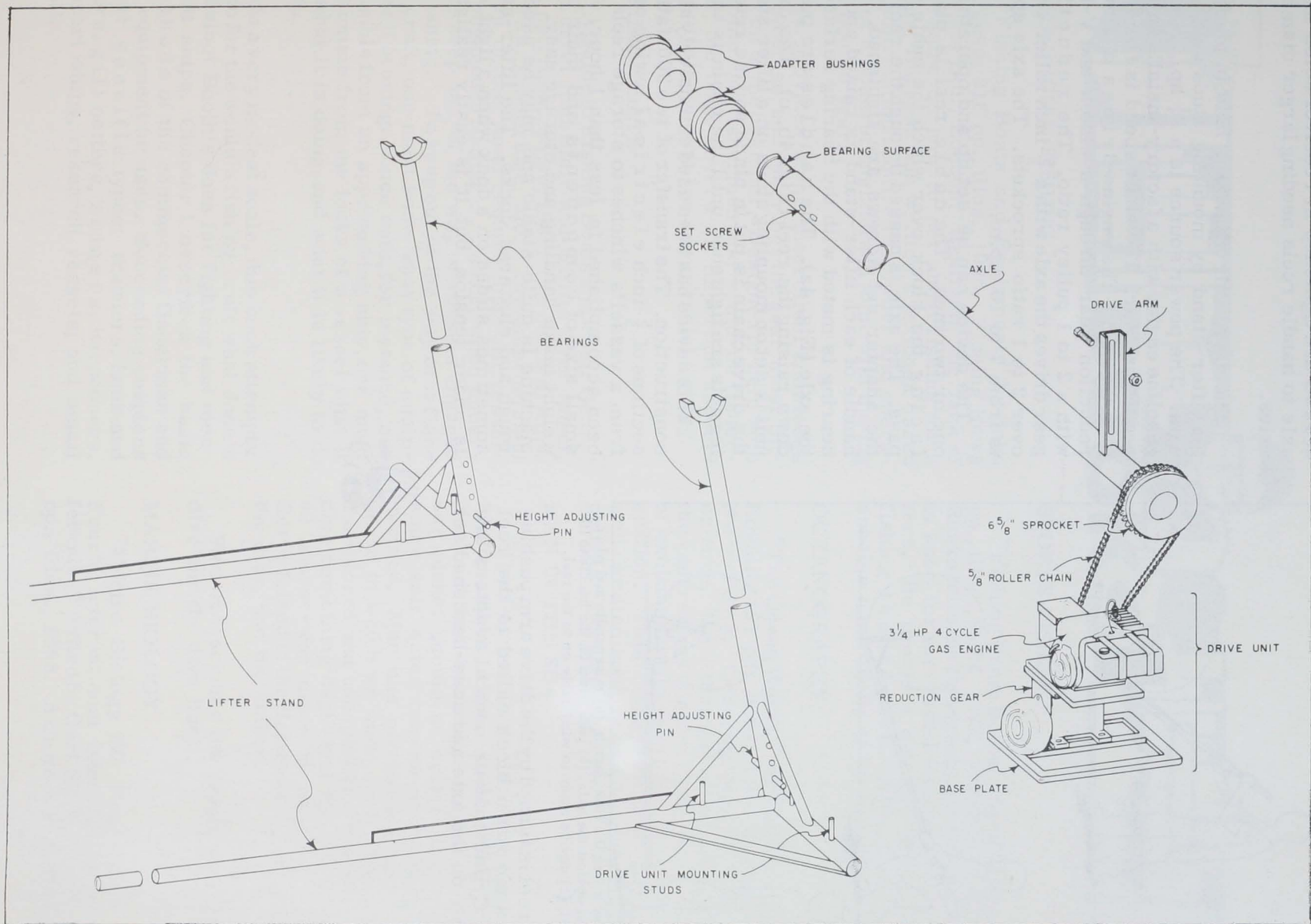


Fig. 3 - Complete assembly for winding cable, exploded view.

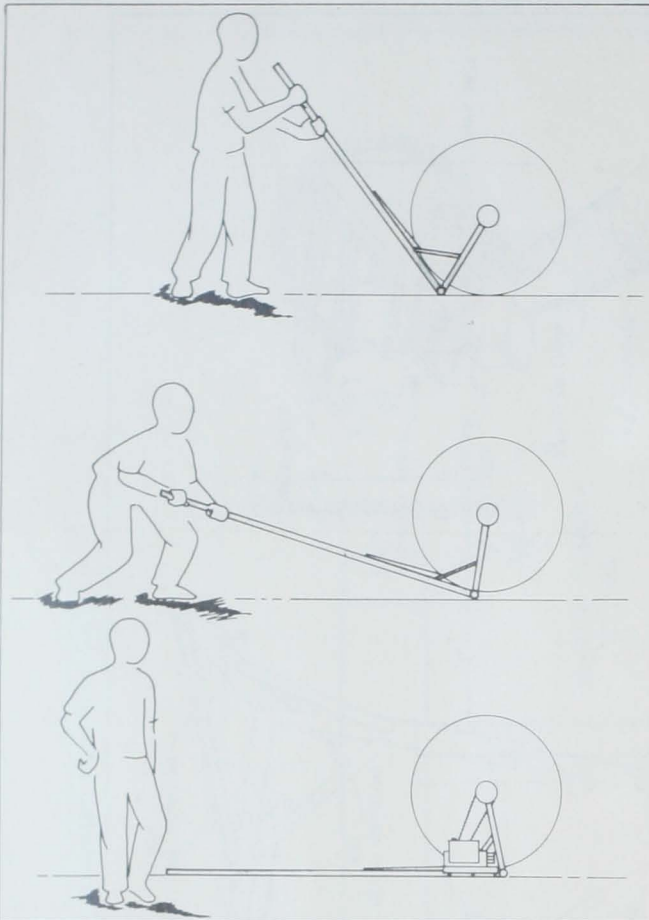


Fig. 4 - How to use the lifter stand: (a) raise handle and place the bearing against the axle; (b) push down on the handle to lift up the reel; (c) device ready to wind cable on to the reel.

wooden reel is turned by the drive arm pushing against a wooden block nailed to the reel flange. Cylindrical or conical adapters are slipped on the axle and case-hardened set

screws are tightened in receiver holes in the axle to handle reels needing larger diameter axles.

The drive unit (Fig. 3) is held in place on the lifter-stand by mounting studs and wing nuts. The power source is a $3\frac{1}{4}$ hp., 4-cycle gasoline engine with a factory-installed 6 to 1 reduction gear. The shaft speed is from 300 to 400 r.p.m. The engine drives a 10 to 1 reduction gear through a clutch and V-belt with a 2 to 1 pulley ratio. The reduction gear drives the axle with a $\frac{5}{8}$ -inch roller chain over 2 to 1 ratio sprockets. The axle speed is from 7 to 10 r.p.m.

The device can be set up and operated by one or two men. The cable reel is placed facing the block over which the cable will pass. The axle is passed through the reel and the adapter set screws are tightened. The handle of each lifter-stand is raised and the bearing is mated with the bearing surface of the axle (Fig. 4a). The handles are pulled down raising the reel (Fig. 4b, c). The drive unit is set on mounting studs on a lifter stand, the drive chain is put in place and the retaining nuts are tightened until the chain is taut.

This device has been used extensively since construction. The transfer of two 300-fathom sections of $\frac{5}{8}$ -inch electrical towing cable from a vessel's winches to storage reels has been accomplished in less than 1 hour. The small size of components and their light weight make handling and storage easy. The machine is quite stable and may be used on rough and cluttered docks. The lifter-stand sometimes slides on a dock when a light reel is under tension, but it is easily realigned.

