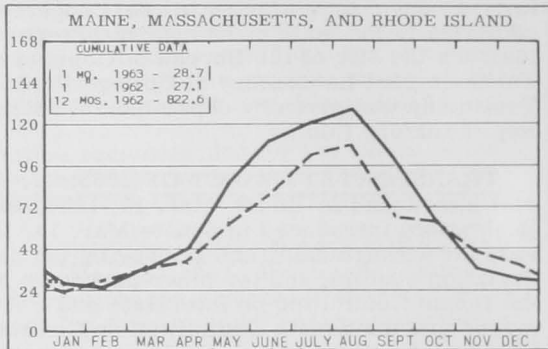
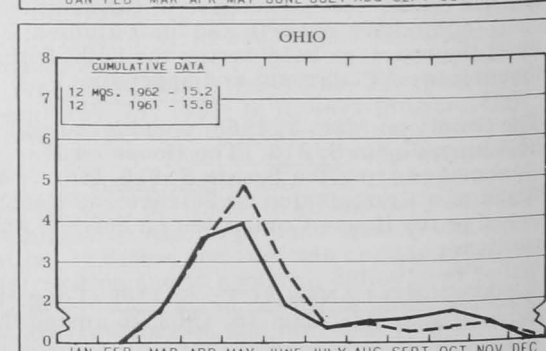
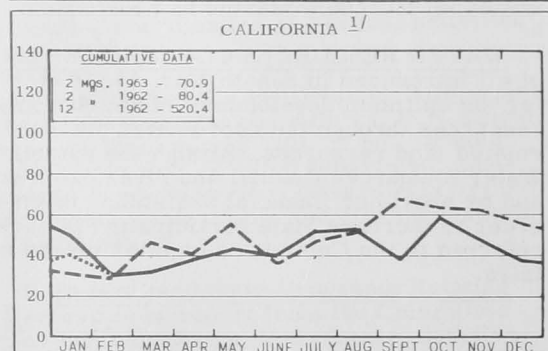
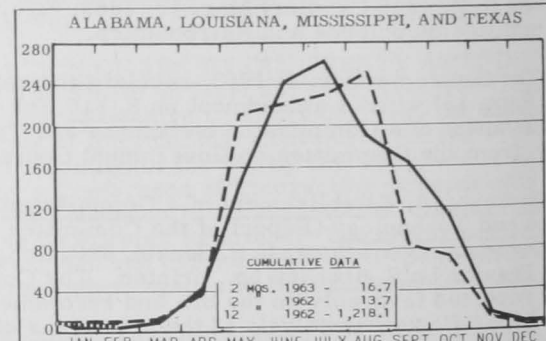
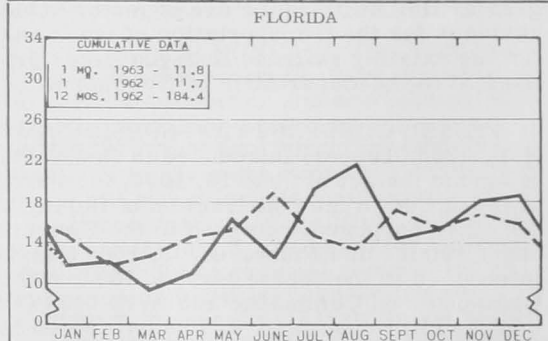
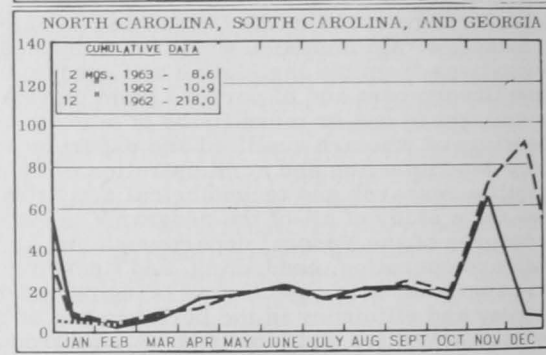
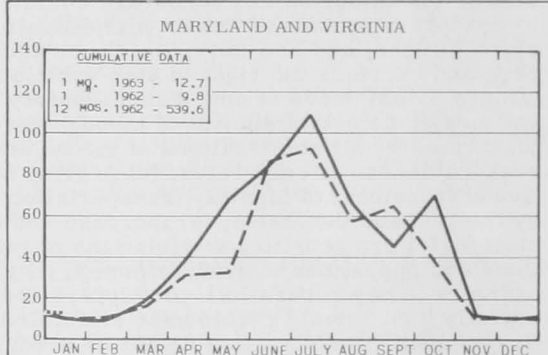
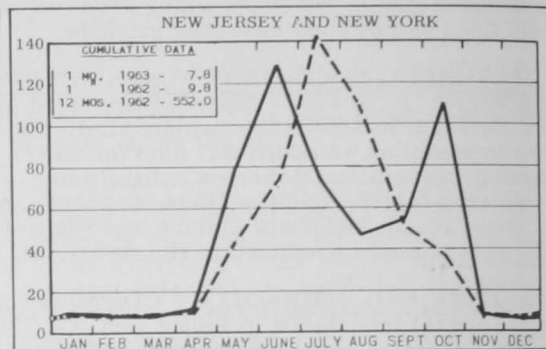




**CHART 1 - FISHERY LANDINGS for SELECTED STATES**  
In Millions of Pounds



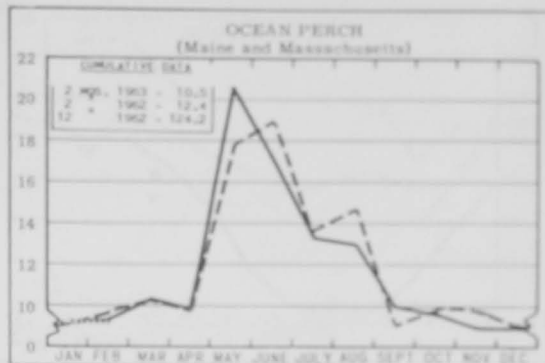
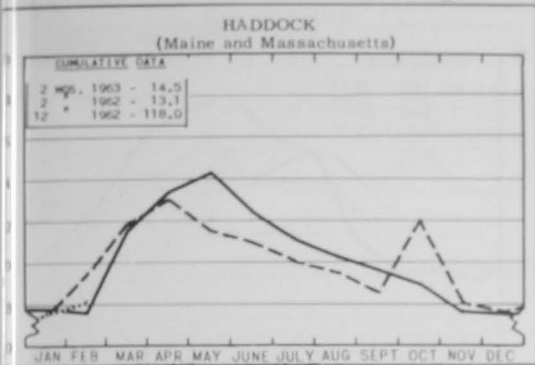
LEGEND:  
..... 1963  
———— 1962  
- - - - 1961



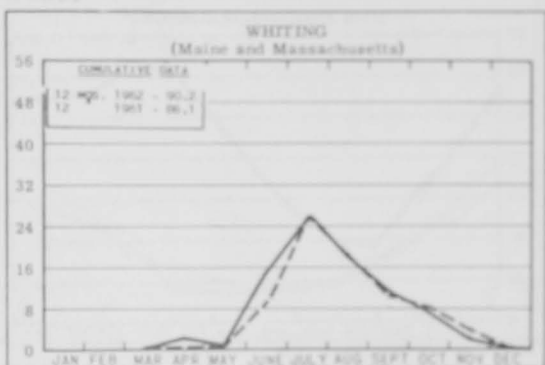
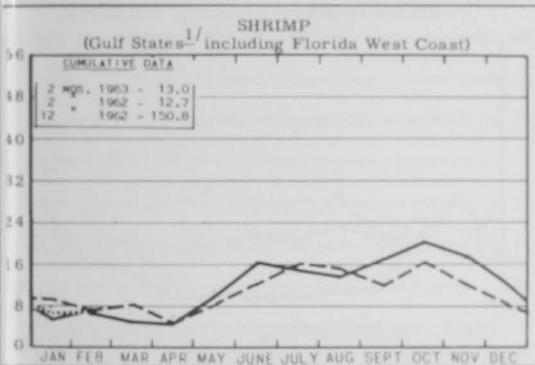
<sup>1/</sup>ONLY PARTIAL--INCLUDING PRODUCTION OF MAJOR FISHERIES AND MARKET FISH LANDINGS AT PRINCIPAL PORTS.

# CHART 2 - LANDINGS for SELECTED FISHERIES

In Millions of Pounds

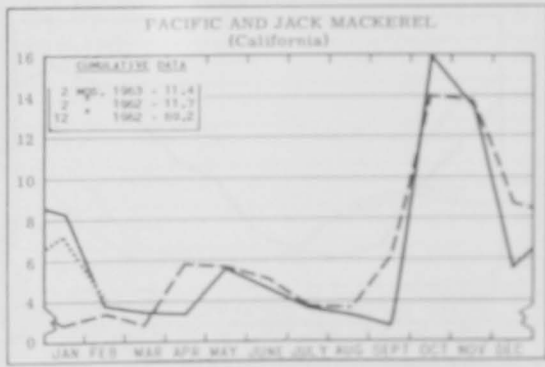
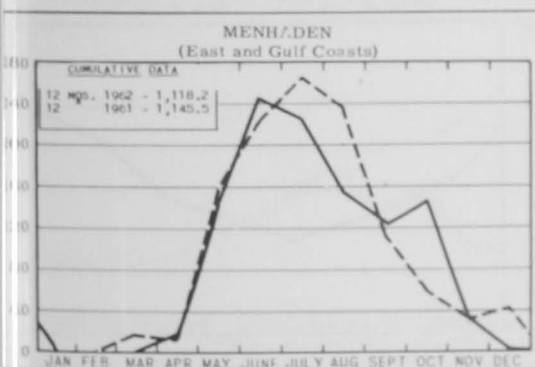


In Millions of Pounds

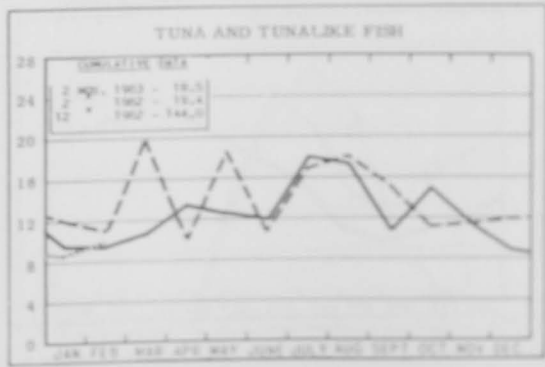
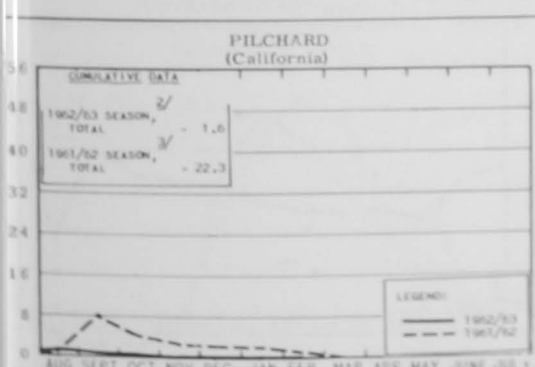


<sup>1/</sup>LA. & ALA. DATA BASED ON LANDINGS AT PRINCIPAL PORTS AND ARE NOT COMPLETE.

In Thousands of Tons



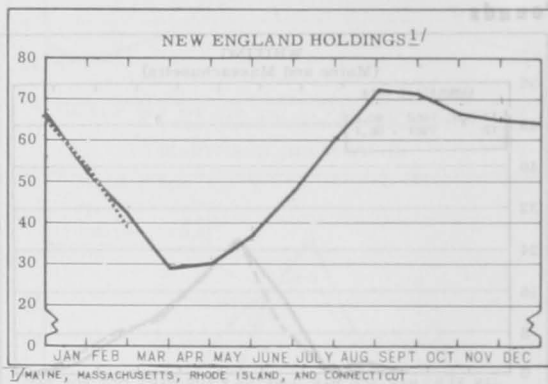
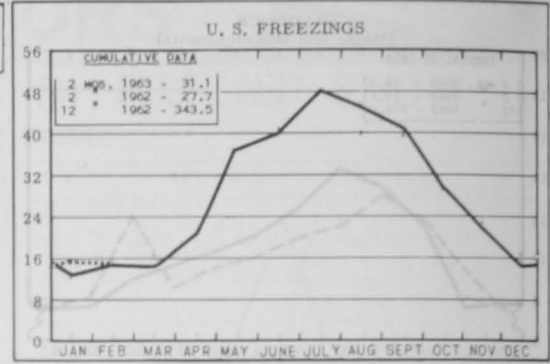
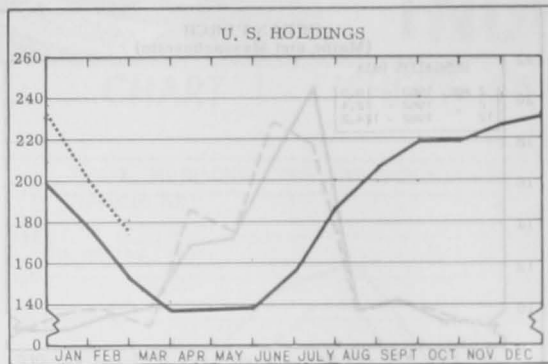
In Thousands of Tons



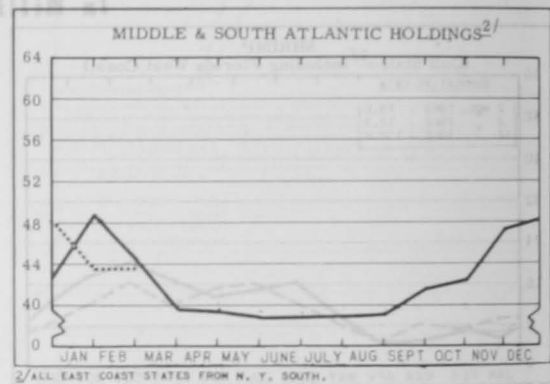
<sup>2/</sup>SEASON TOTAL, AUG. 1, 1962-FEB. 28, 1963. <sup>3/</sup>SEASON TOTAL, AUG. 1, 1961-FEB. 28, 1962.

# CHART 3 - COLD-STORAGE HOLDINGS and FREEZINGS of FISHERY PRODUCTS \*

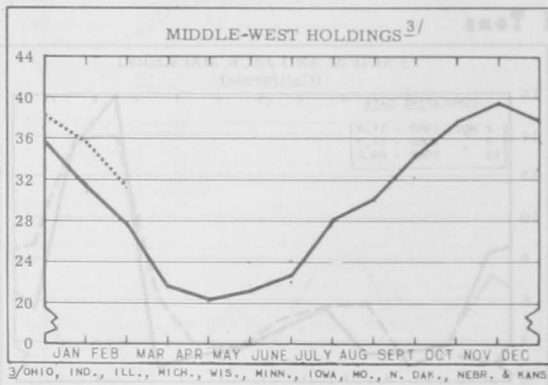
In Millions of Pounds



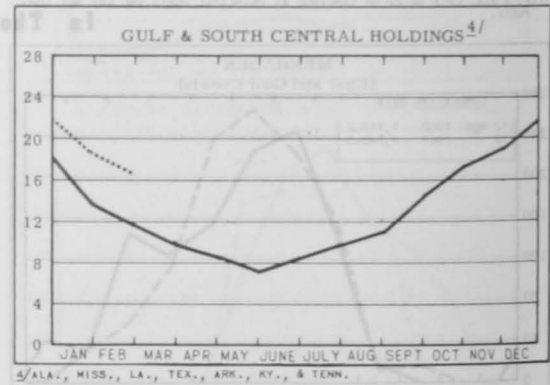
1/MAINE, MASSACHUSETTS, RHODE ISLAND, AND CONNECTICUT



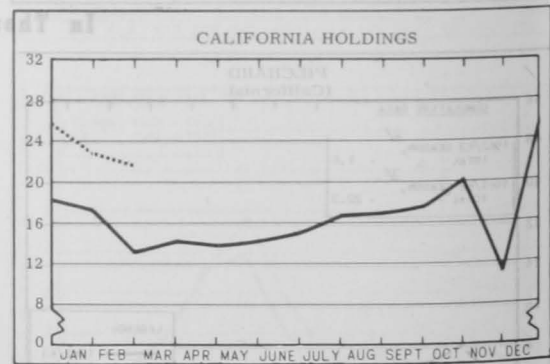
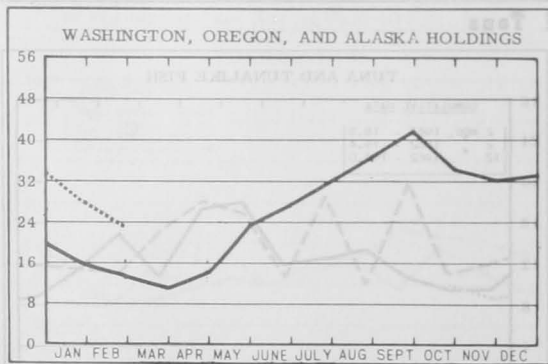
2/ALL EAST COAST STATES FROM N. Y. SOUTH.



3/OHIO, IND., ILL., MICH., WIS., MINN., IOWA, MO., N. DAK., NEBR. & KANS.



4/ALA., MISS., LA., TEX., ARK., KY., & TENN.

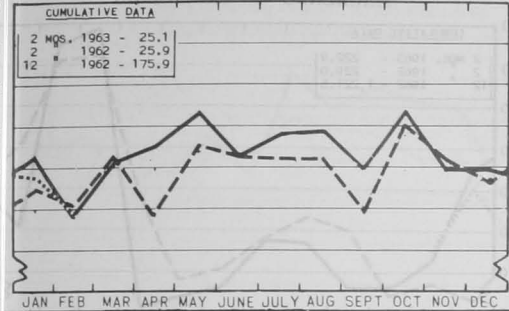


\* Excludes salted, cured, and smoked products.

# CHART 4 - RECEIPTS and COLD-STORAGE HOLDINGS of FISHERY PRODUCTS at PRINCIPAL DISTRIBUTION CENTERS

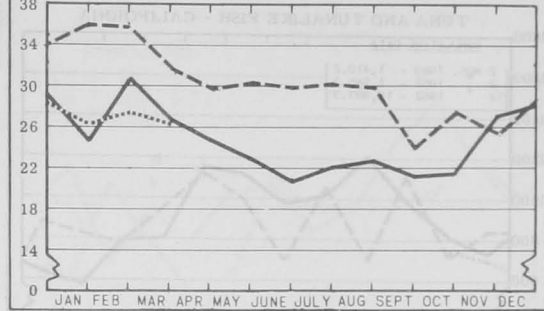
In Millions of Pounds

### RECEIPTS <sup>1/</sup> AT WHOLESALE SALT-WATER MARKET (Fresh and Frozen)



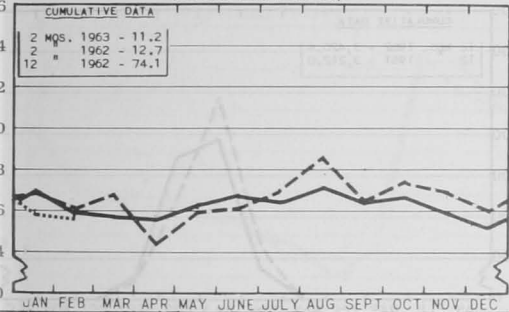
## NEW YORK CITY

### COLD-STORAGE HOLDINGS <sup>2/</sup>



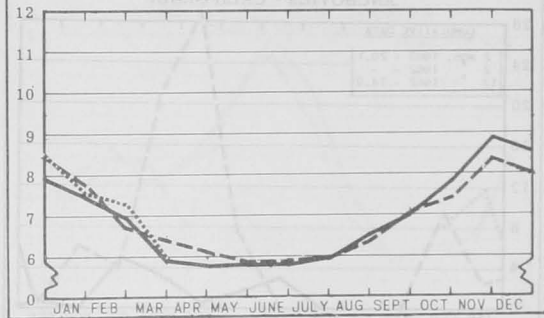
<sup>2/</sup>AS REPORTED BY PLANTS IN METROPOLITAN AREA.

### RECEIPTS AT WHOLESALE MARKET (Fresh and Frozen)



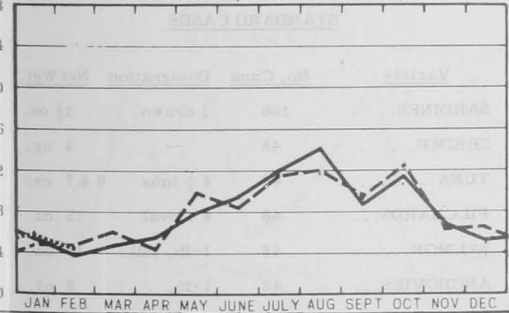
## CHICAGO

### COLD-STORAGE HOLDINGS



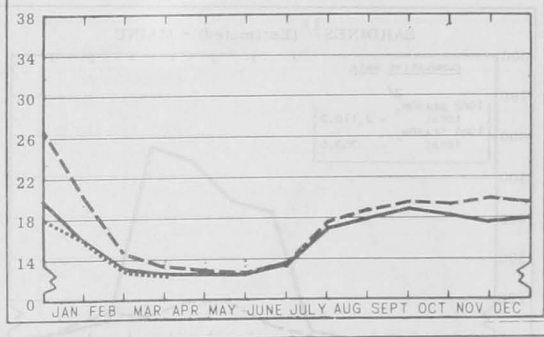
## SEATTLE

### WHOLESALE MARKET RECEIPTS, LANDINGS, & IMPORTS (Fresh and Frozen)



## BOSTON

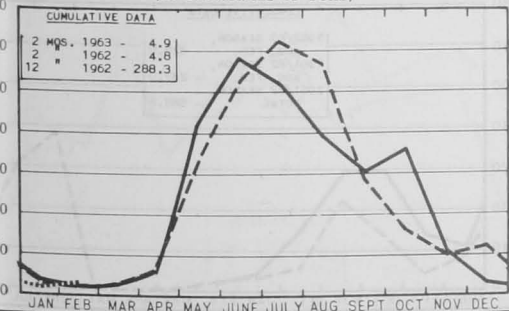
### COLD-STORAGE HOLDINGS



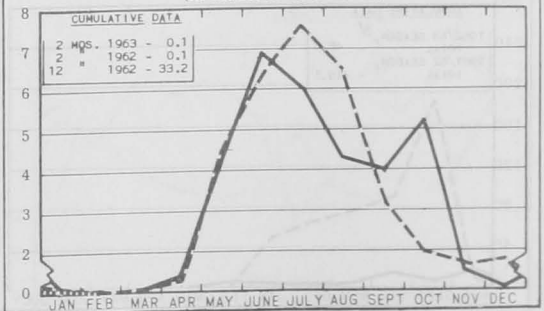
LEGEND:  
 ..... 1963  
 ——— 1962  
 - - - 1961

# CHART 5 - FISH MEAL and OIL PRODUCTION

### FISH MEAL (In Thousands of Tons)

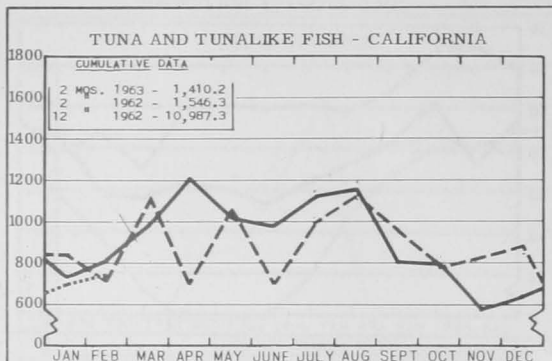


### FISH OIL (In Millions of Gallons)

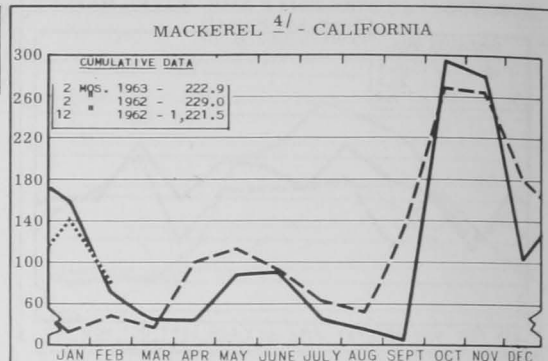


# CHART 6 - CANNED PACKS of SELECTED FISHERY PRODUCTS

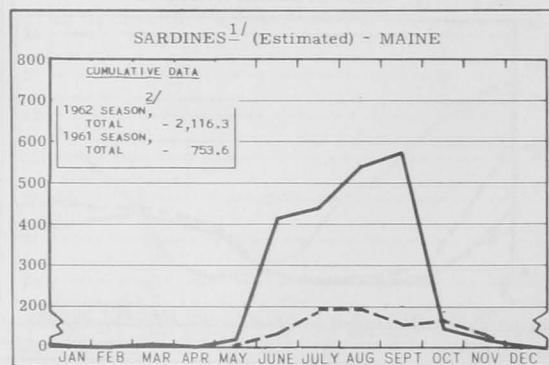
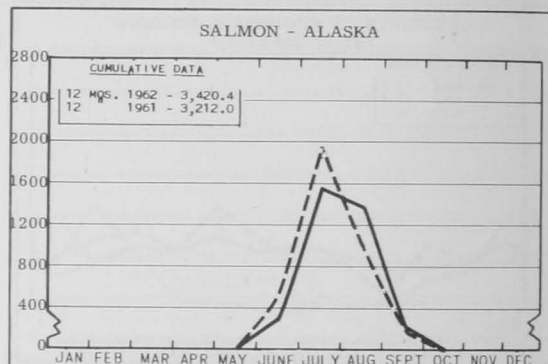
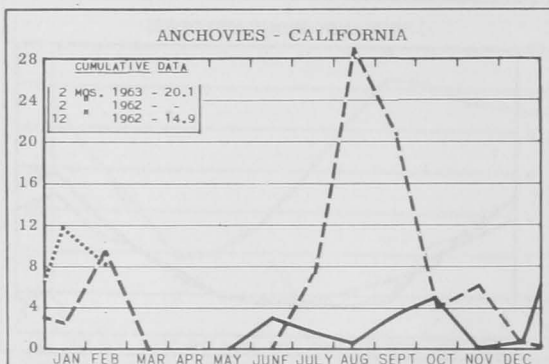
In Thousands of Standard Cases



LEGEND:  
 ..... 1963  
 ——— 1962  
 - - - 1961



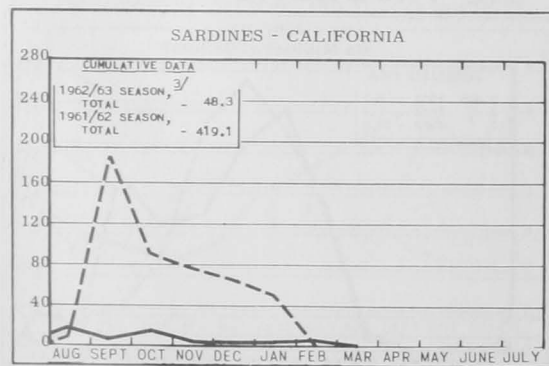
4/ INCLUDES PACIFIC MACKEREL AND JACK MACKEREL.



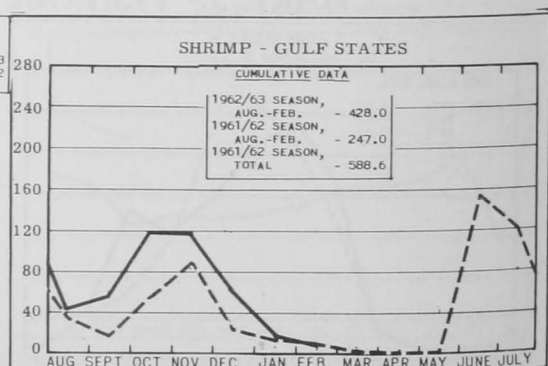
1/ INCLUDING SEA HERRING. 2/ THE 1962 SEASON STARTED DEC. 2, 1961.

**STANDARD CASES**

Variety	No. Cans	Designation	Net Wgt.
SARDINES.....	100	1/4 drawn	3 3/4 oz.
SHRIMP.....	48	--	5 oz.
TUNA.....	48	# 1/2 tuna	6 & 7 oz.
PILCHARDS...	48	# 1 oval	15 oz.
SALMON.....	48	1-lb. tall	16 oz.
ANCHOVIES...	48	1/2-lb.	8 oz.



LEGEND:  
 ..... 1962/63  
 - - - 1961/62



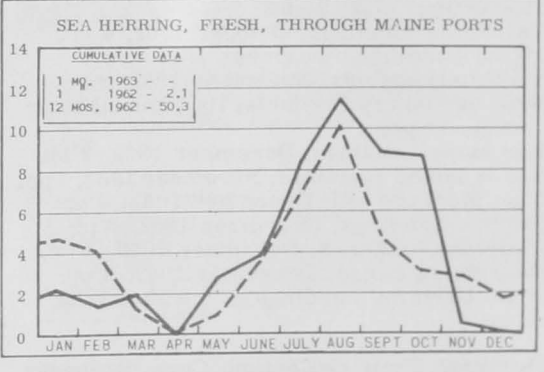
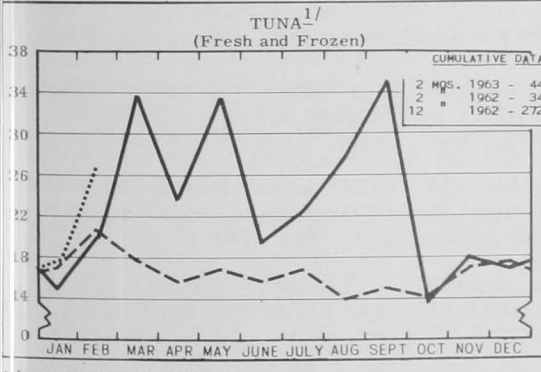
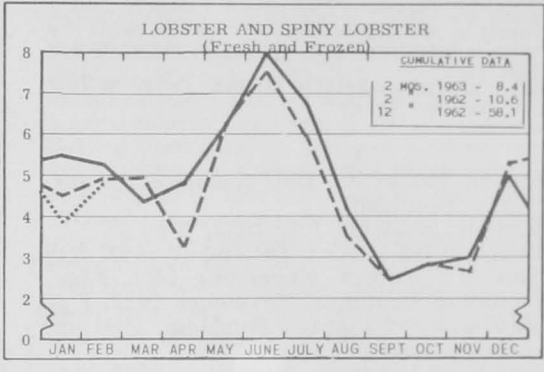
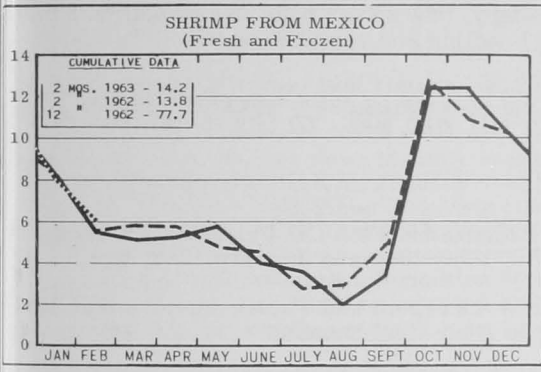
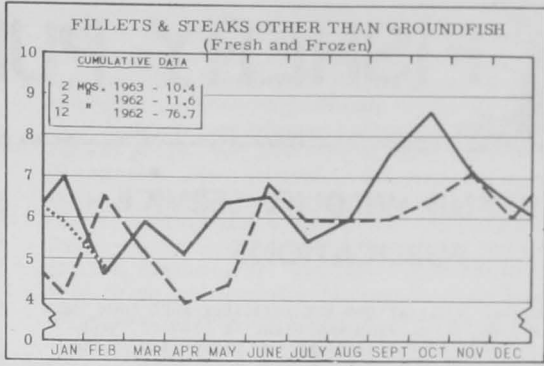
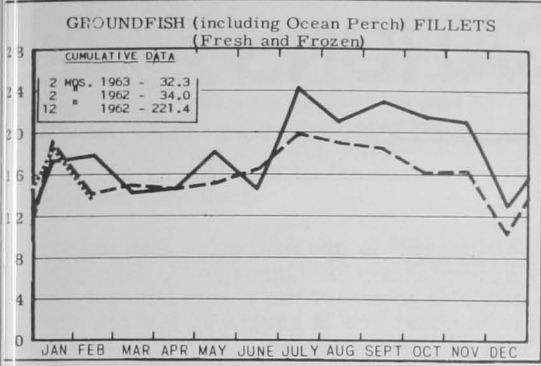
3/SEASON TOTAL, AUGUST 1, 1962-FEBRUARY 28, 1963.



# CHART 7 - U.S. FISHERY PRODUCTS IMPORTS

In Millions of Pounds

LEGEND:  
 ..... 1963  
 ——— 1962  
 - - - 1961



<sup>1/</sup> EXCLUDES LOINS AND DISCS.

