

TRENDS AND DEVELOPMENTS

Additions to U. S. Fleet of Fishing Vessels, November 1955

A total of 25 vessels of 5 net tons and over were issued first documents as fishing craft during November 1955, according to the Bureau of Customs. Compared with the 36 newly-documented fishing craft reported for the corresponding month of the previous year, this was a decrease of 31 percent.

During November 1955 the Chesapeake area led all others with 7 newly-documented craft, followed by the Gulf area with 5, the Alaska area with 4, the South Atlantic area with 3, and the Pacific and Great Lakes areas with 2 each. The New England and Middle Atlantic areas each had 1 addition.

During January-November 1955, a total of 402 vessels was documented for the first time as fishing craft, compared with 694 for the corresponding period of 1954--a decrease of 42 percent. During the 1955 period, the greatest decrease occurred in the Gulf area--a decline of 68 percent.

U. S. Vessels Issued First Documents as Fishing Craft, November 1955 and Comparisons					
Area	November		Jan. -Nov.		Total
	1955	1954	1955	1954	1954
	(Number)				
New England	1	-	18	22	23
Middle Atlantic	1	1	13	15	15
Chesapeake	7	7	51	91	93
South Atlantic	3	4	64	114	119
Gulf	5	13	97	306	313
Pacific	2	7	112	111	117
Great Lakes	2	-	9	5	6
Alaska	4	2	35	26	27
Hawaii	-	-	3	1	1
Puerto Rico	-	2	-	2	2
Unknown	-	-	-	1	1
Total	25	36	402	694	717

Note: Vessels have been assigned to the various areas on the basis of registered home ports.



California

DISTRIBUTION OF YELLOWFIN AND BIG-EYED TUNA INVESTIGATED BY "N. B. SCOFIELD" (Cruise 5): Exploring the distribution and relative abundance of yellowfin and big-eyed tuna in the areas investigated by EASTROPIC was the principal objective of cruise 5 of the California Department of Fish and Game vessel N. B. Scofield. It is hoped that the catch data of this cruise combined with the intensive oceanographic observations of other EASTROPIC vessels may shed more light on the distribution and relative abundance of the tunas in the eastern Pacific.

This cruise was part of a series (EASTROPIC) being conducted jointly by the U. S. Fish and Wildlife Service, Japan, Canada, and private scientific institutions to study the physical oceanography, biological conditions, and other scientific phenomena over wide areas of the Pacific Ocean.

A secondary objective of this N. B. Scofield cruise was to make limited oceanographic observations and biological collections pertinent to tuna life history.

Oceanographic Observations: (1) Bathythermograph observations originally scheduled every two hours while under way were discontinued after the first week because of a breakdown of the power winch. By using the forward plankton tow winch it was possible to take a BT on each long-line station and one at the night light station in the evening.

Fishing Statistics						
Item	Area A	D-3	Galapagos	B	C	All Areas
Long-line stations	5	4	3	10	7	29
Total baskets fished	191	160	120	399	256	1126
Total hooks fished	2070	1732	1303	4331	2767	12203
Yellowfin per 100 hooks	0.14	0.00	0.00	0.97	0.00	0.37
Big-eyed per 100 hooks	0.00	0.23	1.61	0.00	2.31	0.73
Spearfish per 100 hooks	0.53	0.12	0.38	2.49	0.90	1.32
Sharks per 100 hooks	2.32	0.40	0.23	4.36	1.73	2.52
Total catch per 100 hooks	4.35	2.08	2.69	8.20	7.01	5.90

(2) Surface water samples for salinity determinations ashore were taken at each long-line and night light station.

(3) The 6,000-fa. fathometer was inoperative the entire trip.

(4) Surface water temperatures were taken every hour when possible and from every $\frac{1}{2}$ hour to 15 minutes when more critical observations were needed for delineating water masses in Area C.

(5) GEK observations were not taken because of mechanical difficulties with the set previous to departure.

(6) Fishing gear drift data at each long-line station was kept as scheduled.

Biological Activities: (1) Tagging: All viable yellowfin tuna, big-eyed tuna, sailfish, and marlin were tagged with type G tubing tags and Woods Hole dart tags. Ten marlin and sailfish were tagged exclusively with dart tags while 72 tuna and skipjack were tagged alternately with dart and tubing tags.

(2) Morphometric measurements were taken on 3 yellowfin tuna and 5 big-eyed tuna. Further measurements will be taken on specimens preserved for study ashore.

(3) Complete bridge records were kept of all marine life observations during the entire expedition. Considerably more tuna schools, porpoise, and bird flocks occurred in Areas B and C than in the other areas. In Area B alone, 18 porpoise schools were observed and was more than all the other areas combined. Exceptionally large concentrations of colony-forming tunicates (*Pyrosoma* sp.) were observed at the stations along the equator from Area D-3 to the Galapagos Islands.

(4) Sexual maturity studies: Notes were made on the degree of sexual maturity for all fish hauled aboard. All of the large yellowfin tuna caught off Clipperton Island were in an advanced stage of development and would have probably spawned in the near future. The smaller troll-caught tuna, 90 cm. fork length and under, showed no development whatsoever. Off Central America indications were that at least a few of the fish, 110 cm. and under, were just starting to develop. All of the large yellowfin, 110 cm. to 160 cm., caught in this area were in a more advanced stage of development. One female big-eyed tuna caught west of the Galapagos Islands had very probably just spawned.

(5) Trolling was carried on the length of the long-line set while the gear was fishing and also between stations. Very few stations produced any significant num-

bers of troll-caught tuna. Of the troll-caught tuna practically all came from Area B, and were below 90 cm. in length. Fifty percent of the long-line catch in this area was also in this same size group.

(6) Stomach samples were saved from as many tunas and spearfishes as practicable. Preliminary examination indicates the major items of food, were squid and crabs.

(7) A plankton tow to a depth of 300 meters (cable out 450 meters) was taken at all stations.

(8) Night light stations varying from half an hour to an hour were made between each long-line fishing station. An interesting highlight of the night light work was the collection of a rare member of the family *Astronesthidae*. These fish, commonly called snaggletooths, generally inhabit the depths of the ocean and are seldom seen or caught at the surface. Tuna-like larvae were collected at Socorro and Clipperton Islands.

Note: See Commercial Fisheries Review, January 1956, p. 33.

SECOND TAGGED STURGEON RECOVERED: Another sturgeon tagged on September 29, 1954, by California's Department of Fish and Game in San Pablo Bay, Calif., was recovered December 5, 1955, off the mouth of the Columbia River near Astoria, Ore.

This recovery brings further verification of the fact that there is an interchange of the big fish between the Sacramento and Columbia River systems.

The second migrant taken was a 41-inch green sturgeon, caught by a commercial fishing boat and returned to California by the Oregon Fish Commission.

Note: See Commercial Fisheries Review, October 1955, p. 48.



Federal Purchases of Fishery Products

FRESH AND FROZEN FISHERY PRODUCTS PURCHASED BY THE DEPARTMENT OF DEFENSE, NOVEMBER 1955: The Army Quartermaster Corps during November 1955 purchased 1.9

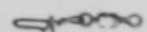
Purchases of Fresh and Frozen Fishery Products by Department of Defense (November and the First 11 Months of 1955)							
QUANTITY				VALUE			
November		Jan. - Nov.		November		Jan. - Nov.	
1955	1954	1955	1954	1955	1954	1955	1954
..(Millions of Pounds)(Millions of Dollars) ..			
1.9	2.3	23.2	23.3	0.9	0.9	10.0	9.6

million pounds (valued at \$0.9 million) of fresh and frozen fishery products for the use of the U. S. Army, Navy, Marine Corps, and Air Force. This was a decrease of 2.4 percent in quantity and 2.0 percent in value as compared with October purchases. No-

vember 1955 purchases were lower by 16.5 percent in quantity and 8.2 percent in value than the purchases for November 1954.

Purchases of fresh and frozen fish for the first eleven months in 1955 totaled 23.2 million pounds (valued \$10.0 million)--lower by 0.4 percent in quantity, but higher by 4.7 percent in value as compared with the first eleven months of 1954.

Prices paid for these fishery products by the Department of Defense in November 1955 averaged 44.1 cents a pound as compared with 43.9 cents in October 1955 and 40.3 cents in November 1954.



Chesapeake Bay Fisheries Trends, 1955

The principal developments in the fisheries of Chesapeake Bay in 1955 were (1) an increase in the harvesting of oysters and (2) a decrease in net fishing. Good catches were reported for alewives, menhaden, crabs, oysters, surf clams, soft clams, scup, and sea bass. Moderate catches were indicated for croaker and sea trout, and although they were better than for any immediately preceding year they were still far below the average catches which once were common for these species. Spot was fairly abundant during the year, reports the Service's Fishery Marketing Specialist in Virginia.

Oysters: Hurricanes plagued the Bay area as they did in 1954. Oyster grounds suffered the greatest damage from the hurricanes. The high winds caused serious damage in some cases, but even more destructive were the heavy rains. Oyster mortality was extreme where freshets wiped out salinity. Despite these losses, over-all oyster production equaled if it did not gain over the previous year, which was a good one. There was an excellent demand for oysters for frozen soups, stews, and other packs. Since standard, or small-size oysters were desired for this purpose, the price gap between these and selects narrowed. At the end of the year the highest ex-vessel prices ever known in the Chesapeake Bay area were paid for oysters.

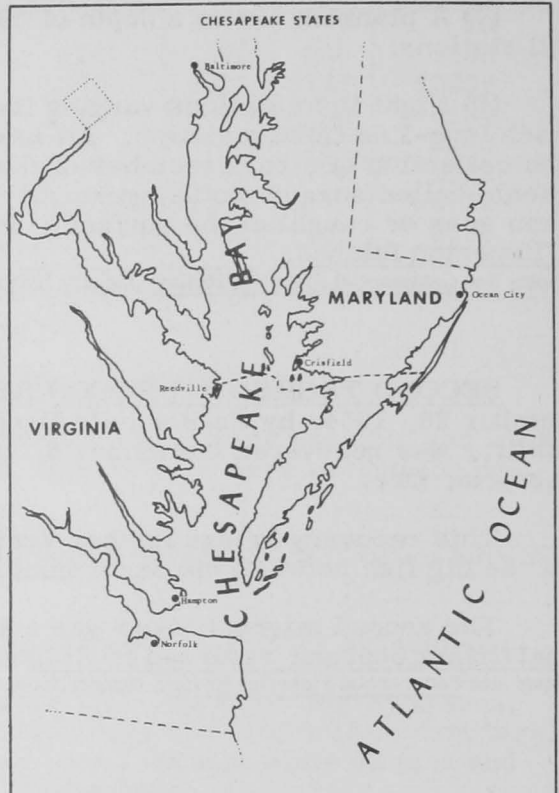
In Virginia's James River, where most of the seed oysters used by the extensive planting industry come from, there was a steady and profitable production by the hundreds of boats working there. Hurricane effects lessened the volume somewhat because they dispersed the oysters to a certain extent and tongers had to spend more time in locating oysters. However, it was generally agreed that this spreading was beneficial because it would eventually enlarge the producing grounds.

At the beginning of the year crabs in the winter fishery were almost non-existent. Crab-meat packers turned to Southern States for a supply, importing crabs, principally from North Carolina, until the spring runs (which came unusually late) appeared. But once the season was under way, both hard and soft crabs were plentiful.

Fresh-Water Fishery: In the fresh-water areas new life was injected into the carp and catfish fisheries by an apparently insatiable demand for live fish for stocking inland ponds. A fleet of tank trucks was busy all year collecting them. Snapper turtles also were vigorously sought to meet the demands of a company producing frozen snapper soup.

Alewives: Alewives, running in abundance, exceeded the needs of the canning and salting companies, which have been finding it increasingly difficult to market their products.

New Products: There was little adventuring in new products. One firm introduced a clam soup made up of a combination of surf clams and hard clams. Dur-



ing the periods when crab meat was cheap, packs varying from canned flakes to frozen deviled crabs were put up. Sizable packs of three products (tuna, fish sticks, and shrimp), the raw materials for which do not originate in the Chesapeake Bay, were reported as in the last few years.

Menhaden: Although Virginia's byproducts processors did not foresee a menhaden catch equal to the record breaker of 1954, the 1955 catch actually passed the 1954 record by several million pounds. This yield was swelled by two additional months of plentiful pound net-caught menhaden and alewives.

Soft Clams: The soft clam industry, which is the Chesapeake's newest fishery, showed signs of bursting its bounds in the two Maryland counties to which it had been confined during the five years of its existence. Fishing intensity has been confined to a small operating area, and expansion to other counties and even into Virginia was sought.



Maine

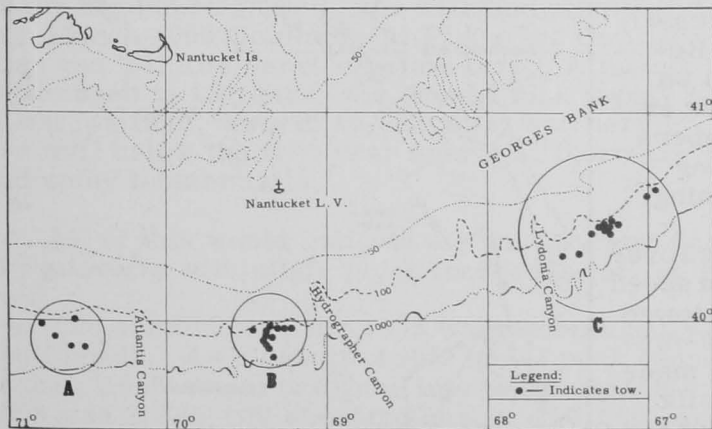
1955 CANNED SARDINE PACK: The 1955 Maine canned sardine pack amounted to 1,254,222 cases, according to official figures released by the State Department of Agriculture on January 18, 1956, reports the Maine Sardine Industry. The industry's Executive Secretary said that the pack was the smallest for any year since 1939 and that this was reflected in packers' inventories which were also near an all-time low for the month of January.

The 1956 Maine sardine canning season legally opens on April 15, but no sizable pack can be expected until late May if the trend of the past ten years continues.



North Atlantic Fisheries Exploration and Gear Research

DEEP-WATER TRAWLING FOR LOBSTERS TRIED BY "DELAWARE" (Cruise 14): More than 7,000 pounds of deep-water lobsters (*Homarus americanus*) were brought aboard the Service's exploratory vessel Delaware during cruise 14, which was completed with the return of the vessel to East Boston on January 28, 1956. During the 13-day trip, exploratory trawling operations were conducted in three areas (marked A, B, and C on the chart) at the edge of the continental shelf, south and east of Georges Bank. In each area successive tows were made in depths between the 100- and 400-fathom range.



Cruise 14 of the Service's exploratory fishing vessel Delaware.

"C" it was necessary to re-rig the net with rollers, because of the many bottom obstructions encountered.

A standard No. 41 otter trawl, rigged without rollers, was used in areas "A" and "B." In area

Five tows were made in area "A," with poor results--a catch of only 19 lobsters. The best single catch was made in the 240- to 260-fathom depth range.

The best fishing was encountered in area "B," where 13 tows were made. The greatest single catch of the cruise--132 lobsters--was made in this area in the 200-275 fathom depth range. The average was 65 lobsters (approximately 455 pounds) a tow.

Fishing results in area "C" were clouded by the many hang-ups encountered. A total of 178 lobsters was taken in 12 tows.

The average weight of the lobsters taken on this trip was approximately seven pounds each.

In cooperation with the Massachusetts Division of Marine Fisheries, a total of 415 lobsters was tagged and released where caught, In addition, 62 lobsters were tagged and released in shallow water in the Beverly area.

Of the total of 1,041 lobsters taken, 56.6 percent were females and 43.4 percent were males. Of the females 159 (or 15.2 percent) of the total catch were egg-bearing.

Samples of quick-frozen cooked lobster meat were processed on board and stored ashore for consumer-acceptance and storage tests.

Production-type exploratory fishing for ocean perch in deep-water south of Sable Island will be the Delaware's mission on Cruise 15, scheduled to start at East Boston on February 6, 1956.

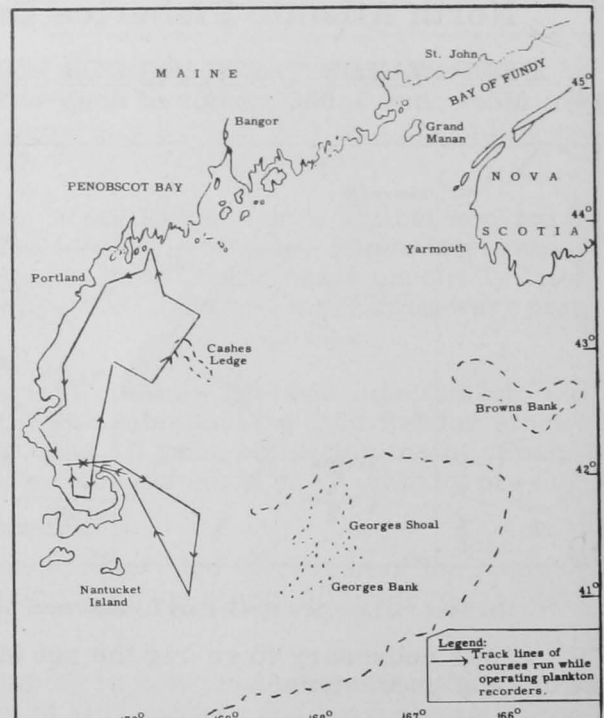


North Atlantic Herring Research

PLANKTON SURVEY OF GULF OF MAINE BY "THEODORE N. GILL" (Cruise 9): During the second and third weeks of December 1955, a second plankton survey was made in the Gulf of Maine by the U. S. Fish and Wildlife Service research vessel, Theodore N. Gill. Hardy Plankton Recorders were used on this cruise as on cruise 8. This work is being done in an effort to determine monthly the numbers distribution of the developing herring young, the product of the 1955 spawning.

Two of the recorders were towed over the track line shown on the chart at a speed of approximately 9 knots. One was towed at the surface and the other at the 10-meter depth. Plankton tows were also made at 8-hour intervals using a conical silk gauze meter net. Surface and subsurface temperature records were kept as on previous cruises.

This cruise was to cover the area from the upper part of the Bay of Fundy to 50 miles southeast of Nantucket Island, including Cashes Ledge, Browns Bank, and



Cruise 9 of M/V Theodore N. Gill (12/13-12/19/55).

the waters off southern Nova Scotia. However, after having been slowed considerably by unfavorable weather, the vessel returned to Boothbay Harbor with engine trouble on December 19. The work will be resumed when the vessel is again in seaworthy condition.



Pacific Oceanic Fishery Investigations

TAGGED BIG-EYED TUNA RECAPTURED BY THE JAPANESE: The first tagged big-eyed tuna ever recaptured in the Pacific was recently taken by Japanese fishermen, thus contributing to the knowledge of the growth and migration habits of this large tuna. According to the Director of the Pacific Oceanic Fishery Investigations, this fish, known locally as "mebachi shibi" or "ahi," was tagged and released by the U. S. Fish and Wildlife Service research vessel John R. Manning, on January 31, 1955, at a point 400 miles northeast of Midway Island.

The fish was retaken by a Japanese long-line fishing vessel, the No. 5 Nikko Maru of the Fukushima Prefecture on November 24, 1955, at a point 690 miles due north of Oahu. The tagged fish had been at liberty for a period of 10 months and moved at least 800 miles during the interval of its freedom. Measurements taken of the fish both at the time of release and at recapture showed that the fish had grown approximately 10 pounds.

This recovery is the first from a total of 82 big-eyed tuna tagged in North Pacific waters by the POFI research vessels between January and September 1955. Besides contributing to the study of the growth and migration of the big-eyed tuna, about which there is very little information to date, the recovery demonstrates the excellent cooperation between scientists and commercial fishermen, in this case between United States scientists and Japanese fishermen.



Fishery Products Market Outlook, January-March 1956

If the American housewife fails to find canned salmon on her grocer's shelves at any time during 1956, she will find plenty of fish sticks in the freezers, the January-March 1956 Commercial Fisheries Outlook (Fishery Leaflet 336aa) of the U. S. Fish and Wildlife Service points out. Although the Maine sardine pack is the lowest it has been in 15 years, the canned tuna supply is ample. While cod and haddock fillets, halibut, swordfish, shrimp, salt herring, and some fresh-water fish supplies are well below the five-year average, there are plenty of flounder fillets, whiting, and spiny lobster tails.

All of this would indicate a generally steady market for most of the major fishery products with slight price increases for the items which are in short supply.

The salmon pack for 1955 was exceptionally small, both in the United States and Canada. As a result of this small pack canners report that already 95 percent of their 1955 output has gone into trade channels. The Alaskan salmon pack for 1955 was 2,385,000 standard cases, 710,000 cases below the 1954 output. British Columbia canners produced 1,406,000 cases, or 304,000 cases less than in 1954.

Shrimp prices which advanced rather unexpectedly during the autumn months will continue high through Lent. Hurricanes interfered with shrimp fishing in the Gulf of Mexico during the fall months and catches were light. With the short supply,

many buyers apparently entered the market simultaneously with a resulting rise in prices. Some buyer resistance was noted late in December but since holdings will probably not increase this quarter, prices will continue at a high level. However, good catches on the west coast of Mexico may stabilize prices to a certain extent.

While the Maine sardine pack took a sharp drop during the year, the California sardine pack showed an increase but the strong export demand which is in evidence enhances marketing prospects for the California product.

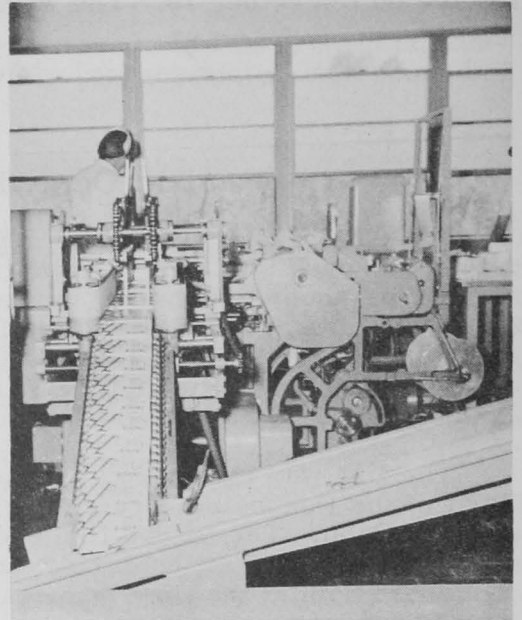
Hurricanes also hit the oyster industry during the past two years and the supplies this season will be light. The market is strong and prices will be higher than they were a year ago.

Because of bad weather in the closing days of the 1955 halibut season in the Pacific, the catch was less than in 1954 by 13 million pounds. Storage holdings are down 5 million pounds. All of which indicates that there will be an increase in halibut prices.

America will experience its usual mid-winter lull in fresh-water fish production, but imports from Canada are expected to follow their usual high midwinter pattern.

Prices on cod, haddock, and ocean perch fillets will rise slightly and show some stability at the higher level.

But America's newest fish morsel, the fish stick, is stepping into a lot of gaps. Production for the first nine months of 1955 was up 45 percent above the like period in 1954. Supplies at present are ample and the prices are competitive.



Packages of fish sticks coming off the labeling or overwrapping machine in a leading Boston fish stick plant.



Saltonstall-Kennedy Act Fisheries Projects

ACTIVITIES OF THE FIRST YEAR (FISCAL YEAR 1955): Nearly half of the \$3,000,000 provided the Fish and Wildlife Service by the Saltonstall-Kennedy Act for the year ending June 30, 1955, was used for biological research on fish and fisheries, according to a report issued by the Secretary of the Interior on December 30. The report is titled: "Research and Activities under the Saltonstall-Kennedy Act, Fiscal Year 1955 (Annual Report of the Secretary of the Interior)." A total of \$1,434,000 was expended on these studies. Approximately the same amount (\$1,444,000) was spent for research in the exploration, development, and utilization of our fishery resources. About \$92,000 was allotted to general administrative expenses and \$30,000 to construction.

The Saltonstall-Kennedy Act was passed in 1954, amending existing statutes. It provides funds "to promote the free flow of domestically produced fishery products in commerce by conducting a fishery educational service and fishery technological, biological and related programs--and to develop increased markets for fishery products of domestic origin..."

In carrying out this policy, the Department has let about 60 contracts for research work in every section of the country for over 40 percent of the year's funds. The contractors include 30 universities, colleges, and public institutions, and 13 commercial and independent scientific research organizations. These contracts represent in excess of \$1,250,000.

More than 100 projects, representing a potential expenditure of more than \$10,000,000 have been suggested for study under the Saltonstall-Kennedy funds. An advisory committee named by the Secretary of the Interior advises in preparing rules and regulations and in recommending priority of projects.

The biological studies covered a variety of subjects including:

Salmon and related species, \$216,700 to determine the racial characteristics of salmon, develop methods of counting, and to secure escapement data.

Pacific sardine, \$114,500, to determine why the supply of sardine, anchovy, and mackerel on the Pacific Coast fluctuates to such a degree.

North Atlantic trawl fishes, \$401,600 to secure biological data on sea scallops, whittings, flounders and ocean perch; to continue operation of the research vessel Albatross III and to study the ocean environment of the offshore banks.

Herring, \$71,900, studies on the biology of herring.

Gulf of Mexico fishes, \$149,300, research on shrimp, sponges, and red tide.

High seas research, \$50,000, on stocks of king crab of the Bering Sea and North Pacific Ocean.

Tuna research in the Pacific, \$216,500.

Commercial shellfishery research, \$145,600 of which \$85,000 was on New England oysters, \$39,000 on Middle Atlantic oysters, and \$21,600 on oysters in the Gulf of Mexico. Menhaden research required \$30,000, and \$23,100 went to improve cultural methods for channel catfish.

The report shows that \$1,385,000 has been allocated for most of these studies in the fiscal year ending June 30, 1956, but in varying amounts. New studies include investigation on Alaska salmon predators and effects of logging for which \$108,300 has been allotted and another allocation of \$32,000 for Atlantic striped bass studies. There will be no expenditure on king crab or sponges from Saltonstall-Kennedy funds in 1956.

A total of \$351,500 was spent on exploratory fishing and gear research. For the current fiscal year ending June 30, 1956, \$299,000 has been allotted for these studies. Maine sardine explorations in the past year cost \$71,000; North Atlantic explorations cost \$163,400. Both of these projects are being continued and about the same amounts have been allocated.

There was \$78,000 spent on construction of a gear research vessel in the past year. Overhauling of the electrical system and the purchase of a radar set for the Oregon in the Gulf explorations was a \$39,000 expense which will not be repeated in fiscal 1956, but \$60,000 has been allocated for South Atlantic shrimp explorations in fiscal 1956 as contrasted with no expenditures for the past year.

Fish technological studies accounted for an expenditure of \$424,000 in the year ending June 30, 1955, and \$464,000 has been allocated for the present fiscal year ending June 30, 1956. The 1955 expenditures include \$139,000 for the development

of voluntary fishery products standards; \$40,000 for research on handling, freezing, and packaging southern oysters; \$65,000 to develop an index for the nutritive value of fish meal; \$170,000 to develop new uses for fish oil; and \$10,000 on freezing skip-jack tuna at sea. All of these programs have been extended into 1956.

Market development and fishery education spent \$304,300 in fiscal year 1955 and will have \$315,000 in fiscal 1956. The regular education and market development program cost \$167,000. The expanded program cost \$137,300. This included expanded school-lunch activities, locker-plant studies, and special marketing programs.

With the approval of the legislation on the first day of the fiscal year (July 1, 1954) in which it became effective, it was incumbent upon the Department of the Interior to implement the purposes of the Act without delay. This was possible because the American fishing industry had in the past made its needs well-known to the Department and the Fish and Wildlife Service. In addition, there was a wealth of background material on the needs and wishes of the domestic industry resulting from the hearings held by the Senate Subcommittee of the Committee on Interstate and Foreign Commerce on April 1, 1954. As a result, the Service was able to develop and the Department to announce a program on September 10, 1954, calling for the expenditure of approximately \$1,800,000 of the funds available in the first year under the Act.

The Secretary of the Interior was authorized under the Act to appoint an advisory committee of the American fishing industry to advise him in the formulation of policy, rules, and regulations pertaining to requests for assistance, and other matters.

Because of the loss of time necessarily taken up with administrative details in connection with the appointment of the Advisory Committee members, the first year's program was largely developed without the advice of the Committee. However, when the Committee met on April 28 and 29, 1955, there was still unallocated and unexpended a total of about \$700,000. The Committee endorsed the program and activities already under way, and made recommendations for the expenditure of the remaining \$700,000.

Note: See Commercial Fisheries Review, October 1955, pp. 69-70.

* * * * *

FISHERY STATISTICAL OFFICE OPENED IN BROWNSVILLE, TEX., AND KEY WEST, FLA.: Statistical offices for the collection of fishery data have been opened at Brownsville, Tex., and Key West, Fla., by the Branch of Commercial Fisheries, U. S. Fish and Wildlife Service. These offices will collect detailed data on employment in the fisheries, number of craft and quantity of gear operated, the catch of fishery products, and related information on the fisheries in the vicinity of Brownsville and Key West. Detailed statistics on the shrimp fishery will be obtained in connection with the Service's expanded program for the collection of shrimp statistics. James H. Ryan will be in charge of the Key West office. These new offices are being financed by funds provided by the Saltonstall-Kennedy Act (68th Stat. 376).

The information on shrimp production will be released in the daily Fishery Products Report published by the Service in New Orleans and in the monthly bulletins entitled Shrimp Landings published by the Service in Washington, D. C. Copies of the Fishery Products Report may be obtained from the Fish and Wildlife Service, Federal Building, New Orleans 12, Louisiana; and of Shrimp Landings from the Statistical Section, Branch of Commercial Fisheries, Fish and Wildlife Service, Washington 25, D. C. The first issue of Shrimp Landings will cover landings during January 1956.



School-Lunch Program

FISH-COOKERY DEMONSTRATION PROGRAM FOR 1956: An estimated 200 fish-cookery demonstrations, most of them for school-lunch groups, will be given by the Fish and Wildlife Service during 1956, Acting Secretary of the Interior Clarence A. Davis said December 27, 1955. At present 180 demonstrations have been scheduled or are in the process of being scheduled.



Sampling the fish dishes prepared at the fish-cookery demonstration at the Santa Rita Elementary School in San Angelo, Tex., January 23, 1956.

The fish-cookery demonstrations are part of the broader program of the Fish and Wildlife Service in the development of wider markets for fish and shellfish. Currently the work is being done under responsibility established by the Saltonstall-Kennedy Act. The activity is financed by funds made available by the same Act. Recipes developed in test kitchens at College Park, Md., and Seattle, Wash., are used in the demonstrations.

The Fish and Wildlife Service has given approximately 1,300 fish-cookery demonstrations since 1946. Of these 1,000 have been for school-lunch groups and 300 for educational, institutional, and homemaker groups. School-lunch demonstrations for the most part are given to those actually responsible for the preparation of school lunches. This is true also of the institutional classes. The homemaker and educational demonstrations are given for persons who teach others, such as college home-economic classes, extension workers, and gas and electric cooking-school personnel. One fish-cookery demonstration given to a

cooking-specialist class by the Fish and Wildlife Service was passed along to 16,000 individual homemakers during the following year.

Until recently most of the work has been done in the eastern half of the United States. In many of the more sparsely-settled states demonstrations have been arranged for summer "workshops" or short courses for school-lunch personnel.

In 1956 the project will be expanded to provide for a nationwide program. In some of the states in which demonstrations were given five or more years ago, additional series are now being scheduled to train persons who have entered the school-lunch program recently.

To date, the following demonstrations have been scheduled, with others to follow: Texas 50 demonstrations; California 48; Maryland 10; Missouri 12; Wisconsin 12; Virginia 25; and South Carolina 23.



South Atlantic Exploratory Fishery Program

NEW GEAR RESEARCH VESSEL COMMISSIONED: A new gear research and exploratory fishing vessel, the George M. Bowers, was commissioned January 7 in Miami, Fla., by the U. S. Fish and Wildlife Service. This addition to the Service's fleet of exploratory fishing vessels has a wooden hull and is 73 feet long. It was built with funds provided by the Saltonstall-Kennedy Act of 1954 which was designed to promote fishery technological, biological, and market studies. It was constructed for the U. S. Fish and Wildlife Service by the Tampa Steamways, and will be based in Miami.



Fig. 1 - The George M. Bowers, a new gear research and exploratory fishing vessel recently commissioned by the U. S. Fish and Wildlife Service.

The George M. Bowers is especially equipped for research work on fishing gear and will be primarily a gear-research vessel but can be used for deep-sea exploration also.



Fig. 2 - U. S. Fish and Wildlife Service Director John L. Farley, principal speaker at the commissioning ceremony of the George M. Bowers.

His son, George M. Bowers, Jr., gave a brief biographical sketch of his father. The new vessel will be under the command of Captain A. M. Morgan.

The wooden hull was chosen because a wooden vessel is better suited to the electronic equipment which will be used in the research program. Among other things, the vessel has underwater television equipment which will permit close study of fishing gear operation under water, the effect of gear on any fish habitat on the bottom, escapement through the nets, and numerous other technical questions that have concerned our commercial fisheries for years.

The Director of the Service accepted the vessel for the U. S. Fish and Wildlife Service. The vessel is named after George M. Bowers, Commissioner of Fisheries, from 1898 to 1913.

His son, George M. Bowers, Jr., gave

For an indefinite period the George M. Bowers will work close to Miami because the extremely clear water there makes it well adaptable to the type of research to be pursued. Its immediate objective will be to assist in shrimp exploration on the southeast Atlantic Coast, a project also financed by Saltonstall-Kennedy funds.



Sport Fishing and Hunting Economic Survey Under Way

The Nation's first survey to determine the importance of hunting and fishing in our economy was begun about January 3, 1956. The survey is being conducted by Crossley S-D Surveys, Inc., under a contract signed on June 1, 1955, with the U. S. Fish and Wildlife Service.



A sport fisherman's catch.

About 15,000 households, some in every state of the Nation, will be visited initially and interviews will be conducted with hunters and fishermen in about 5,000 of these. The survey is designed to show how much time and money was spent on hunting and fishing activities last year. Americans have long been aware of the intangible values and the national relaxation afforded by hunting and fishing and will now see the economic side of the picture.

With our increasing population gradually squeezing hunting and fishing resources and with that same increasing population demanding more fish and more game, America is facing a real challenge. One of the logical steps to meet this challenge is the present survey.

In September of 1954, the U. S. Fish and Wildlife Service was requested to make this survey, the request coming from the International Association of Game, Fish and Conservation Commissioners, representing the fish and game departments in the 48 states. Several of the states have also contracted with the survey firm to conduct similar studies.



Public Eating Places Survey

NUMBER SERVING FISH AND SHELLFISH: Public eating places are still a fertile field for exploration by those who deal in fish and shellfish, a survey being conducted by the U. S. Fish and Wildlife Service indicates. Projecting the preliminary results of a probability sampling of 4,500 public eating places for one phase

Table 1 - Number of Public Eating Places in the United States Reporting Whether or Not Fishery Products Are Served, By Type

Type	Total	Those Serving No Fish or Shellfish		Those Serving Fish or Shellfish	
		Number	Percent	Number	Percent
Restaurants	123,110	20,703	16.8	102,407	83.2
Cafeterias	4,824	643	13.3	4,181	86.7
Restaurants or cafeterias located in hotels	15,518	1,246	8.0	14,272	92.0
Drug or proprietary stores with fountain	33,771	25,260	74.8	8,511	25.2
Other (drinking places, caterers, lunch counters, and refreshment stands) . .	206,268	134,171	65.0	72,097	35.0
Total	383,491	182,023	47.5	201,468	52.5

Note: The data are a projection based on the probability sampling of 4,500 public eating places.

of the study, only half of the various types of public eating places in the United States served fish or shellfish in 1955.

The survey made by the Service to find out about fish consumption in public eating places indicates that while more than 100,000 restaurants and cafeterias in this country did serve fish or shellfish in 1955, there were more than 20,000 which did not. A high percentage of the drug stores having soda fountains (25,260 out of the

Table 2 - Type of Public Eating Places Serving No Fishery Products, by Region

Type	Total		Northeast		North Central		South		West	
	Number	Percent	Number	Percent	Number	Percent	Number	Percent	Number	Percent
Restaurants	20,703		2,014	4.7	6,040	10.0	7,959	15.0	4,690	18.4
Cafeterias	643		-	-	72	.1	499	.9	72	.3
Restaurants or cafeterias located in hotels	1,246		938	2.2	133	.2	175	.3	-	-
Drug or proprietary stores with fountain	25,260		6,497	15.2	10,086	16.7	6,688	12.6	1,989	7.8
Other (drinking places, caterers, lunch counters, and refreshment stands)	134,171		33,350	77.9	44,234	73.0	37,849	71.2	18,738	73.5
Total	182,023		42,799	100.0	60,565	100.0	53,170	100.0	25,489	100.0

Note: Same as table 1.

33,771 in the country) did not serve fish during the year. Under the "other" classification (includes various drinking places which serve food, catering establishments, lunch counters, and refreshment stands) there were 134,000 out of 206,000 (or 65 percent) which did not serve fishery products of any description during the past year.

The West and the South accounted for many of the restaurants which did not serve fishery products last year, but the miscellaneous eating places not serving fish seemed to be distributed fairly evenly around the Nation.

Table 3 - Number of Portions for Each Pound of Fish Fillets Served by Each Type of Public Eating Place Using Fishery Products

Number of Servings	Type of Public Eating Places											
	Total		Restaurant		Cafeterias		Restaurant or Cafeterias in Hotels		Drug or Proprietary Stores		Other	
	Number	Percent	Number	Percent	Number	Percent	Number	Percent	Number	Percent	Number	Percent
One serving . . .	2,609	1.3	1,833	1.8	-	-	323	2.3	(a)	(b)	429	(b)
Two servings . .	33,353	16.6	19,555	19.1	593	14.2	4,500	31.5	-	-	8,705	12.1
Three servings .	60,365	30.0	37,647	36.8	1,213	29.0	4,675	32.8	1,287	15.1	15,543	21.6
Four servings . .	31,304	15.5	18,014	17.6	1,327	31.7	1,438	10.1	1,896	22.3	8,629	12.0
Five servings . .	3,580	1.8	1,868	1.8	143	3.4	72	(b)	250	2.9	1,247	1.7
Six servings . . .	1,356	(b)	428	(b)	-	-	-	-	-	-	928	1.3
Seven servings . .	72	(b)	72	(b)	-	-	-	-	-	-	-	-
Eight servings . .	245	(b)	72	(b)	(a)	(b)	-	-	-	-	143	(b)
No reply or not applicable	68,591	34.0	22,918	22.4	876	20.9	3,264	22.9	5,056	59.4	36,477	50.6
Public eating places serving fishery products in U. S.	201,475	100.0	102,407	100.0	4,182	100.0	14,272	100.0	8,513	100.0	72,101	100.0

(a) Less than 50 establishments. (b) Less than one percent. Note: Same as table 1.

The survey included approximately 4,500 establishments and covered a one-week period in May 1955. The Service contracted with the Bureau of the Census to conduct the survey.

Table 1 is a preliminary report on the distribution of establishments in the United States which reported whether they did or did not serve fish or shellfish products. Table 2 shows the average number of public eating places serving no fish or shellfish by type and by regions.

PORTION CONTROL FOR FISH FILLETS: A standard portion of fish or shellfish, individually wrapped in cellophane at a carefully inspected processing plant and placed before him virtually "untouched by human hands," may be in the offing for the patron of public eating places. One of the questions included in the U. S. Fish and Wildlife Service survey of 4,500 public eating places was designed to determine "how much fish is a portion," which in turn may be the basis for some major changes in the processing of fishery products for restaurant use.

This study is of particular interest to restaurants and other public eating places because of the increasing demand for fishery products in those establishments and because restaurants seem to be incurring losses in time and product waste because of "guess-cutting" by kitchen help who in many cases have not had the training to become adept in the particular job of determining the individual serving portion for fishery products.

Table 4 - Number of Portions for Each Pound of Fish Fillets Served by Public Eating Places Using Fishery Products According to Volume of Sales

Number of Servings	Total		Volume of Sales									
			\$100,000 or More		\$40,000 to \$99,000		\$10,000 to \$39,000		Less Than \$10,000		No Reply	
	Number	Percent	Number	Percent	Number	Percent	Number	Percent	Number	Percent	Number	Percent
One serving . . .	2,609	1.3	556	3.8	684	2.8	642	1.1	572	(b)	155	1.2
Two servings . . .	33,353	16.6	4,080	27.6	5,183	21.6	9,502	15.7	11,762	13.3	2,826	21.1
Three servings . . .	60,365	30.0	5,780	39.1	7,925	33.0	22,133	36.5	21,529	24.3	2,998	22.4
Four servings . . .	31,304	15.5	2,369	16.0	5,252	21.8	10,161	16.8	10,768	12.1	2,754	20.6
Five servings . . .	3,580	1.8	77	(b)	364	1.5	1,175	1.9	1,750	2.0	214	1.6
Six servings . . .	1,356	(b)	72	(b)	214	(b)	214	(b)	856	1.0	-	-
Seven servings . . .	72	(b)	-	-	-	-	72	(b)	-	-	-	-
Eight servings . . .	245	(b)	87	(b)	(a)	(b)	-	-	-	-	143	1.1
No reply or not applicable . . .	68,591	34.0	1,770	12.0	4,400	18.3	16,678	27.5	41,446	46.7	4,297	32.0
Public eating places serving fishery products in U. S.	201,475	100.0	14,791	100.0	24,037	100.0	60,577	100.0	88,683	100.0	13,387	100.0

(a) Less than 50 establishments.

(b) Less than one percent.

Note: Same as table 1.

There is a wide variance as to what constitutes a "portion" of fish fillets in restaurants and other public eating places, according to the preliminary results of this survey. The most popular serving of fish fillets is about five ounces per person, or about three servings to a pound of fillets. A very few of the restaurants indicate that they serve a pound of fillets per person. Then there are others who state that they serve six portions to a pound. Approximately one-third of them serve three. Another one-third is about equally divided between serving two or four portions from a pound of fillets. Projecting the results of the probability sampling of 4,500 public eating places, we found that over 60 percent of the public eating places in the United States serve between 2 to 4 portions from a pound of fish fillets.



U. S. Fish Stick Production

The fish stick--that recent addition to America's diet--has found a friend in the young American housewife and is proving to be an economic asset to several areas in the Nation, especially in New England, according to U. S. Fish and Wildlife Service reports.

1955 PRODUCTION: Data compiled by the Service show that the production of fish sticks in 1955 exceeded 65 million pounds, compared with almost 50 million pounds in 1954, and 7.5 million pounds in 1953 (table 1). In 1952 the only production was in pilot plants engaged in getting this new industry started. Production is still centered in New England (which accounts for about 40 million pounds of the total), but the industry has spread to many states on the eastern and western seaboard and even into the Midwest.

During 1955, 88 percent of the production was made up of cooked fish sticks and the remaining 12 percent was uncooked.

Table 1 - U. S. Production of Fish Sticks, 1954-55, by Months

Month	1955 ^{2/}	1954 ^{1/}
	(Million of Lbs.)	
January	5.1	2.8
February	5.8	3.2
March	7.2	4.0
April	6.2	3.8
May	5.1	3.9
June	5.7	4.4
July	4.6	3.8
August	4.7	4.4
September	5.6	4.3
October	5.4	5.6
November	5.0	4.8
December	5.0	5.0
Total	65.4	50.0

^{1/} Revised.

^{2/} Preliminary.

OCTOBER-DECEMBER 1955: During the fourth quarter of 1955, the United States production of fish sticks amounted to 15.4 million pounds. This was slightly less than the production reported for the corresponding quarter of 1954 (table 2).

Month	Cooked	Uncooked	Total
. (Million of Pounds) . .			
October	4.6	0.8	5.4
November	4.3	0.7	5.0
December	4.3	0.6	4.9
Total 4th quarter 1955 .	13.2	2.1	15.3
Total 4th quarter 1954 .	12.8	2.5	15.3
Total 12 months 1955 .	57.6	7.8	65.4
Total 12 months 1954 .	43.6	6.4	50.0

YOUNG HOUSEWIVES PREFER FISH STICKS: A consumer survey completed by the U. S. Fish and Wildlife Service indicates that it is the young American housewife, the homemaker under 25 years of age, who favors the fish stick. The survey

also showed that the white-collar worker was more inclined to purchase them than was the manual worker, and that only 20 percent of the families with annual incomes of less than \$2,000 were fish-stick purchasers, compared with 50 percent of the families with incomes of \$10,000 a year or more.

The production figures for 1955 seemed to indicate a leveling off during the year at slightly less than 6 million pounds a month, but the consumer survey points out that 60 percent of the potential fish-stick market is still untouched. Also, the study emphasizes that 85 percent of the housewives who try fish sticks are satisfied with them.

Note: Also see Commercial Fisheries Review, October 1955, 1, 40; June 1955, p. 61; March 1955, p. 28.



U. S. Foreign Trade

IMPORTS OF GROUND FISH FILLETS, 1955: United States imports of groundfish (cod, haddock, hake, pollock, cusk, and ocean perch) fillets in 1955 amounted to almost 129.0 million pounds--6.3 percent less than in 1954 but still 40.8 percent more than in 1953.

Canada again led as the largest foreign supplier of groundfish fillets in 1955, shipping 74.7 percent of the total, while in 1954 it shipped 63 percent of the total imports. Iceland was the second largest supplier, but while in 1954 it shipped 27 percent of the total United States imports, in 1955 it supplied only 15.4 percent. Norway, the United Kingdom, Denmark, West Germany, Miquelon and St. Pierre, and France all shipped less fillets to the United States in 1955 than in 1954. On the other hand, Greenland shipped more fillets to the United States in 1955 than in 1954.

Country	^{2/} 1955	1954	1953
. . (1,000 Pounds) . .			
Canada	96,359	85,632	59,673
Iceland	19,875	39,269	25,410
Sweden	-	-	-
Norway	4,220	4,615	3,956
Denmark	3,926	2,735	256
United Kingdom . .	50	173	139
Netherlands . . .	764	389	271
France	313	354	232
West Germany . .	2,426	3,641	1,532
Japan	1	-	-
Miquelon and St. Pierre . . .	299	612	148
Greenland	765	204	-
Total	128,999	137,624	91,617

^{1/} Includes blocks and slabs, the raw material for fish sticks.

^{2/} Preliminary.

Imports of groundfish fillets permitted to enter the United States at the $1\frac{7}{8}$ -cents-per-pound rate of duty in the calendar year of 1955 were 35,432,624 pounds,

compared with 33,950,386 pounds in 1954. Imports in excess of the quota enter at a duty of 2½ cents per pound.

GROUND FISH FILLET IMPORTS LOWER IN DECEMBER 1955: Imports of groundfish fillets, including ocean perch fillets, during December 1955 amounted to 4.2 million pounds (see chart 7 in this issue). Compared with the 5.7 million pounds of these fillets reported for the corresponding month of 1954, this was a decline of 27 percent. The decline was caused primarily by substantially lower imports from Iceland. Canada also exported less fillets to the United States during December. West Germany and the United Kingdom exported no groundfish fillets to the United States during December 1954 but did export some fillets during the corresponding month of 1955. Denmark and the Netherlands both exported more fillets to the United States during December 1955 than during the same month of the previous year.



Unloading a refrigerated trailer loaded with imported frozen fillets at Fulton Market, Chicago, Ill.

Canada led all other countries exporting groundfish fillets to the United States with 3.9 million pounds during December 1955--12 percent less than during the same month of 1954. Canada accounted for 92 percent of the total groundfish fillet imports for December 1955.

EDIBLE FISHERY PRODUCTS, OCTOBER 1955: United States imports of fresh, frozen, and processed edible fish and shellfish in October 1955 amounted to 74.3 million pounds (valued at \$5.7 million), according to a U. S. Department of Commerce summary (see table). This was an increase of 27.7 percent in quantity and 12.8 percent in value as compared with September 1955. Compared with a year earlier, October 1955 imports were higher by 9.7 percent in quantity and 7.6 percent in value.

United States Foreign Trade in Edible Fishery Products, October 1955 with Comparisons						
Item	Quantity			Value		
	Oct.		Year	Oct.		Year
	1955	1954	1954	1955	1954	1954
	(Millions of Lbs.)			.. (Millions of \$) ..		
Imports:						
Fish & shellfish: fresh, frozen & processed 1/	74.3	67.7	801.7	18.4	17.1	202.8
Exports:						
Fish & shellfish: processed 1/ only (excluding fresh and frozen)	5.7	6.8	50.8	1.6	2.3	13.2

1/ Includes pastes, sauces, clam chowder and juice, and other specialties.

Exports of processed edible fish and shellfish in October totaled 5.7 million pounds (valued at \$6.8 million), an increase of 39.0 percent in quantity and 6.3 percent in value as compared with September 1955. October 1955 exports were lower by 16.2 percent in quantity and 30.4 percent in value as compared with October 1954 exports.



United States and Alaska Salmon Catch and Pack, 1955

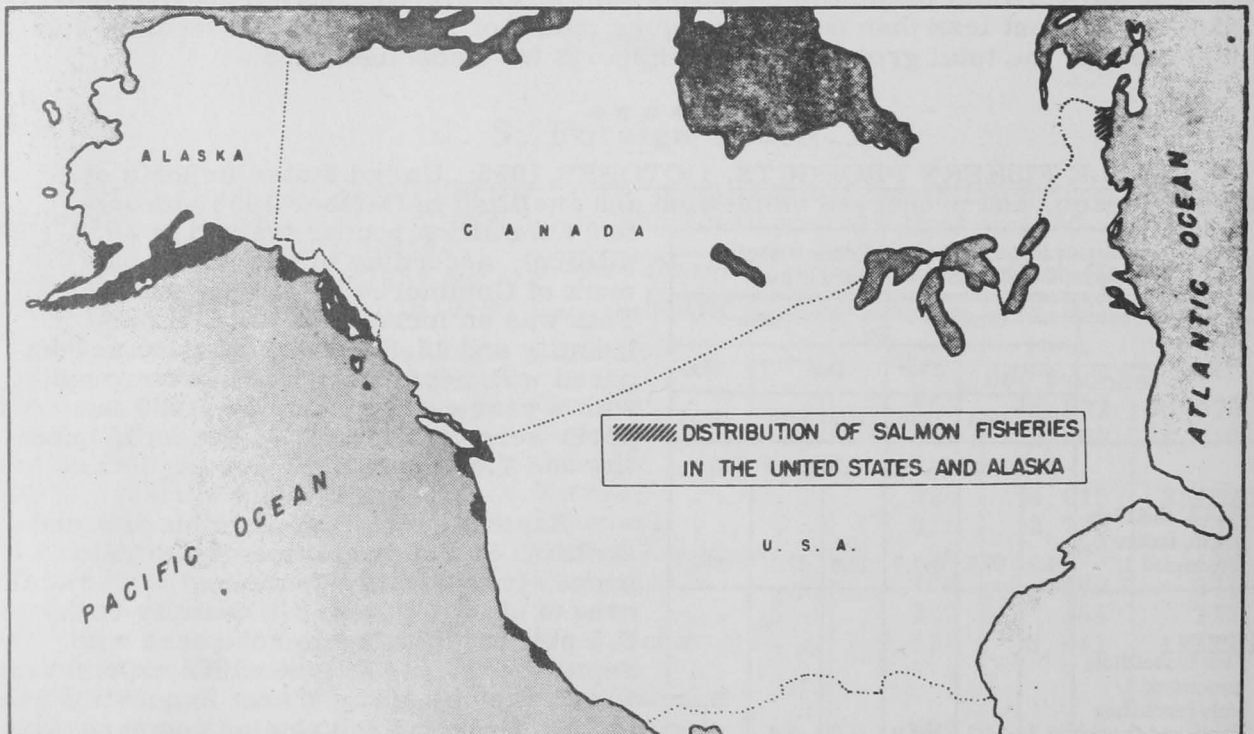
CATCH: The catch of salmon in the United States and Alaska declined sharply in 1955, amounting to about 286 million pounds, as compared with 325 million pounds the previous year, preliminary data indicate. Reduced catches of red (sockeye) salmon on Puget Sound and chum salmon in Alaska were responsible for the decline.

Table 1 - U. S. & Alaska Salmon Catch by Species and Area, 1954-55^{1/}

Species	1955			1954		
	Alaska	Wash., Ore., & Calif.	Total	Alaska	Wash., Ore., & Calif.	Total
	(1,000 Lbs.)			(1,000 Lbs.)		
Chinook	11,128	26,771	37,899	12,208	24,207	36,415
Chum	27,950	6,116	34,066	67,084	9,149	76,233
Pink	96,493	31,911	128,404	88,692	2	88,694
Red	49,250	6,115	55,365	56,468	35,269	91,737
Silver	16,146	13,938	30,084	22,581	8,846	31,427
Total	200,967	84,851	285,818	247,033	77,473	324,506

^{1/} Preliminary data.

Pink salmon was the only species showing an important increase in catch. Largely because of the catch of nearly 32 million pounds of pink salmon on Puget Sound, the landings of pinks amounted to 128 million pounds as compared with 89 million pounds in 1954.



CANNED PACK: The estimated pack of canned salmon in 1955 amounted to 3,224,500 cases as compared with 4,163,100 cases for the previous year. The 1955 pack was only 36 percent as large as the record 1936 production of 8,965,000 cases and was the smallest since 1906.

Species	1955			1954		
	Alaska	Wash., Ore., & Calif.	Total	Alaska	Wash., Ore., & Calif.	Total
	. (Std. Cases--48 1-lb. Cans) .			. (Std. Cases--48 1-lb. Cans) .		
Chinook .	47,000	30,500	177,500	51,373	78,560	129,933
Chum . .	365,000	69,000	434,000	1,006,951	322,805	1,329,756
Pink . . .	1,244,000	415,000	1,659,000	1,136,792	14,334	1,151,126
Red . . .	620,000	128,000	748,000	732,338	591,492	1,323,830
Silver . .	109,000	84,000	193,000	167,299	47,824	215,123
Steelhead	-	13,000	13,000	-	13,379	13,379
Total . .	2,385,000	839,500	3,224,500	3,094,753	1,068,394	4,163,147

^{1/} Preliminary data.



Wholesale Prices, December 1955

Some cold and wintry weather both along the East and West Coasts and in the Gulf of Mexico plus the usual light landings during the Christmas holidays curtailed the supply of fishery products during December 1955. The rise in the December 1955 index (112.6 percent of the 1947-49 average) for all edible fish and shellfish (fresh, frozen, and canned) was slight when compared with November 1955, but 12 percent above December 1954.

The drop in the December 1955 index for the drawn, dressed, and whole finfish subgroup was due principally to better supplies of fresh whitefish and yellow pike. Prices for fresh large drawn haddock were almost unchanged, but prices of frozen dressed halibut increased slightly. From November 1955 to December 1955 this subgroup index dropped 2.1 percent, but was 8.9 percent higher than the index for December 1954.

Prices were substantially higher in December 1955 than in the previous month for fresh skin-on haddock fillets (up 8.3 percent) and fresh headless 26-30 count shrimp at New York City (up 12.8 percent) because supplies were fairly light. For the fresh processed fish and shellfish subgroup, the index in December 1955 was 6.0 percent higher than the previous month and 22.5 percent above the index for the same month in 1954.

Higher prices for fresh shrimp were reflected in a rise in the prices for frozen packaged shrimp. Prices at Chicago for frozen headless 26-30 count shrimp continued to increase from November to December 1955, but at a slower rate in spite of the 32-percent increase from October to November 1955. The December 1955 index for the processed frozen fish and shellfish subgroup was up 3.6 percent from November and 27.5 percent above December 1954.



A 34-pound lobster caught off Montauk Point, L. I., on display at the fish section of a chain food store in Niantic, Conn.

In the canned fishery products subgroup, canned Maine sardine prices rose in December 1955 because the pack for the 1955 season was the smallest in 15 years; canned light-meat chunk tuna prices were readjusted downward to reflect changes in marketing conditions; canned California sardine prices dropped because the pack

Group, Subgroup, and Item Specification	Point of Pricing	Unit	Avg. Prices ¹ / (\$)		Indexes (1947-49=100)			
			Dec. 1955	Nov. 1955	Dec. 1955	Nov. 1955	Oct. 1955	Dec. 1954
			ALL FISH & SHELLFISH (Fresh, Frozen, & Canned)					112.6
<u>Fresh & Frozen Fishery Products:</u>					121.0	118.5	110.1	102.9
<u>Drawn, Dressed, or Whole Finfish:</u>					117.0	119.3	115.6	107.4
Haddock, lge., offshore, drawn, fresh	Boston	lb.	.12	.12	124.3	125.7	106.3	97.3
Halibut, West., 20/80 lbs., drsd., fresh or froz.	New York	lb.	.28	.27	85.1	84.6	99.3	87.7
Salmon, king, lge. & med., drsd., fresh or froz.	New York	lb.	.59	.60	133.1	133.7	135.1	129.2
Whitefish, L. Superior, drawn, fresh	Chicago	lb.	.53	.75	131.4	185.9	161.1	109.1
Whitefish, L. Erie pound or gill net, rnd., fresh	New York	lb.	.68	.85	136.5	171.9	161.7	114.2
Lake trout, domestic, No. 1, drawn, fresh . . .	Chicago	lb.	.65	.65	132.2	132.2	116.8	129.1
Yellow pike, L. Michigan & Huron, rnd., fresh .	New York	lb.	.44	.44	102.0	102.0	75.1	90.3
<u>Processed, Fresh (Fish & Shellfish):</u>					124.1	117.1	108.9	101.3
Fillets, haddock, sml., skins on, 20-lb. tins . .	Boston	lb.	.39	.36	132.7	122.5	102.1	91.9
Shrimp, lge. (26-30 count), headless, fresh . . .	New York	lb.	.72	.64	113.4	100.5	87.1	84.2
Oysters, shucked, standards	Norfolk	gal.	5.50	5.50	136.1	136.1	136.1	123.7
<u>Processed, Frozen (Fish & Shellfish):</u>					113.7	109.7	93.3	89.2
Fillets: Flounder (yellowtail), skinless, 1-lb. pkg.	Boston	lb.	.40	.40	104.7	104.7	102.1	98.2
Haddock, sml., skins on, 1-lb. pkg.	Boston	lb.	.29	.29	89.5	89.5	84.7	90.2
Ocean perch, skins on, 1-lb. pkg.	Boston	lb.	.28	.27	112.8	108.8	106.7	111.8
Shrimp, lge. (26-30 count), 5-lb. pkg.	Chicago	lb.	.76	.71	116.5	110.0	83.3	72.5
<u>Canned Fishery Products:</u>					100.5	102.6	103.4	96.8
Salmon, pink, No. 1 tall (16 oz.), 48 can/cs. . .	Seattle	case	21.70	21.70	114.8	114.8	114.8	104.4
Tuna, lt, meat, chunk, No. 1/2 tuna (6-1/2 oz.), 48 cans/ cs.	Los Angeles	case	11.80	12.60	85.1	90.8	92.3	93.0
Sardines, Calif., tom, pack, No. 1 oval (15 oz.), 48 cans/cs.	Los Angeles	case	7.00	7.38	81.7	86.1	88.1	2/
Sardines, Maine, keyless oil, No. 1/4 drawn (3-1/4 oz.), 100 cans/cs.	New York	case	8.70	8.20	92.6	87.3	87.3	71.3
¹ /Represent average prices for one day (Monday or Tuesday) during the week in which the 15th of the month occurs. These prices are published as indicators of movement and not necessarily absolute level. Daily Market News Service "Fishery Products Reports" should be referred to for actual prices.								
² /Not available.								

was better than early season predictions had indicated; and canned salmon prices remained unchanged although stocks were practically exhausted. This subgroup index dropped 2 percent from November to December 1955, but was still 3.8 percent higher than a year earlier.

