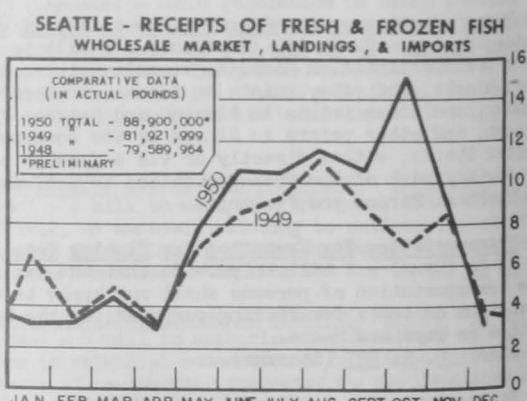
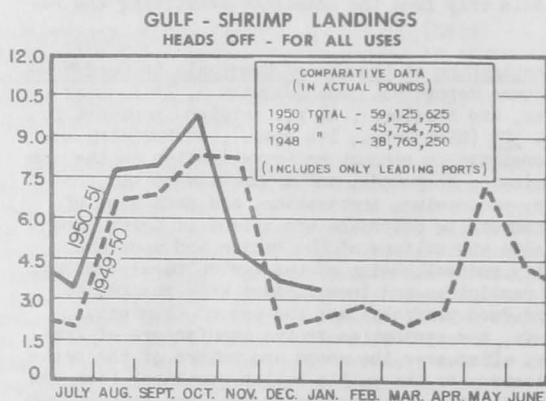
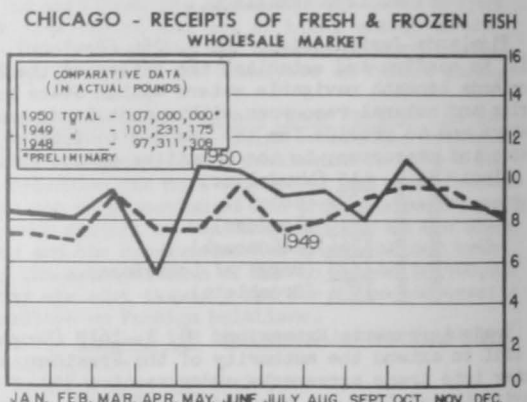
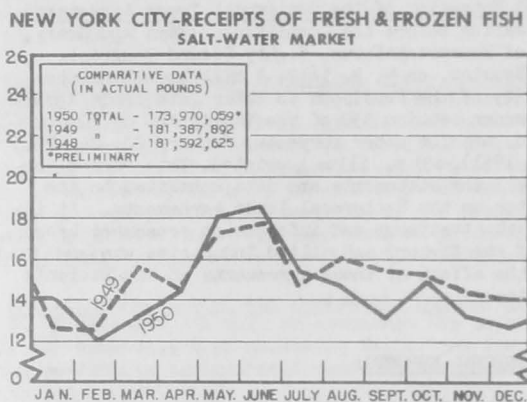
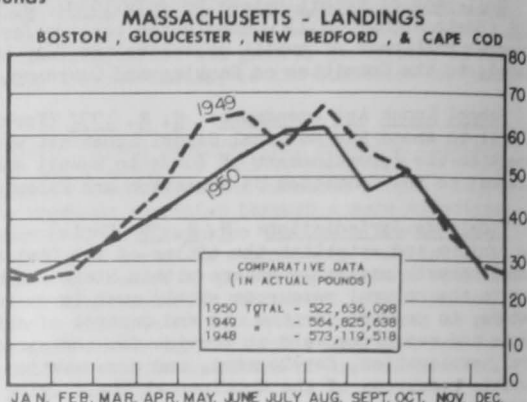
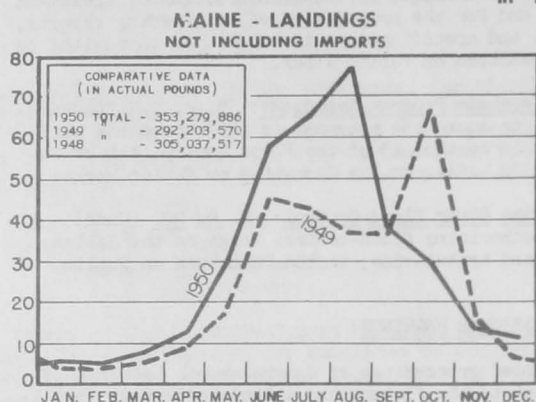
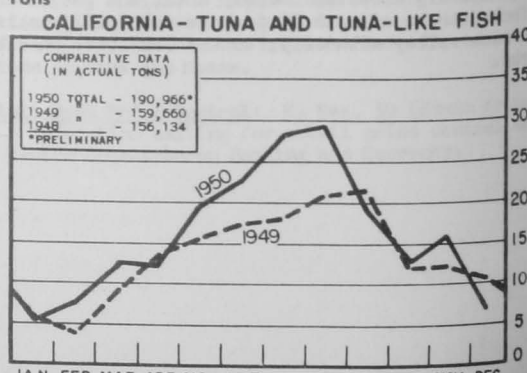
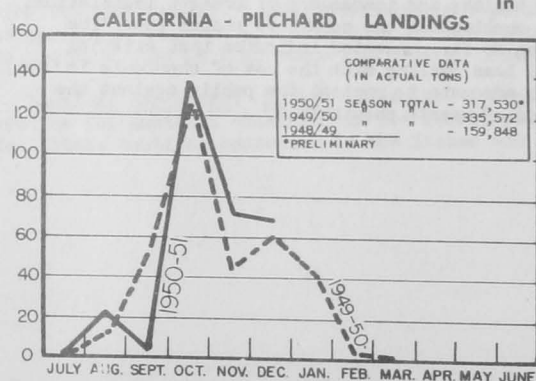


# LANDINGS AND RECEIPTS

In Millions of Pounds



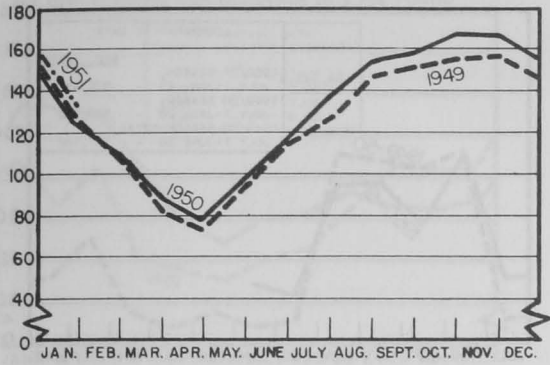
In Thousands of Tons



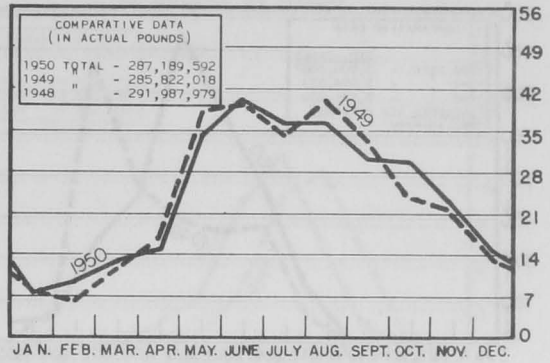
# COLD STORAGE HOLDINGS and FREEZINGS of FISHERY PRODUCTS

In Millions of Pounds

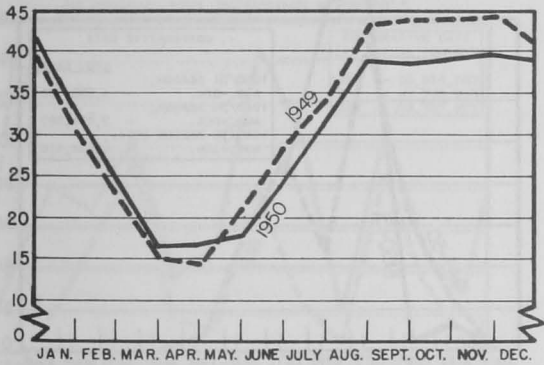
U.S. & ALASKA - HOLDINGS OF FROZEN FISH



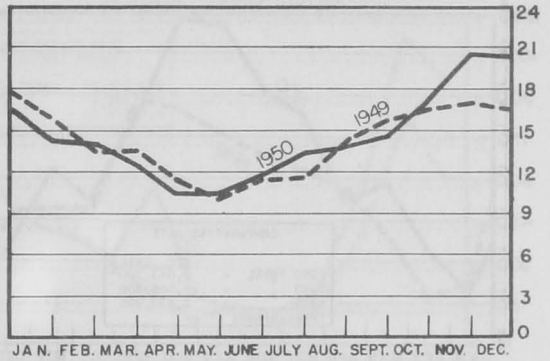
U.S. & ALASKA - FREEZINGS



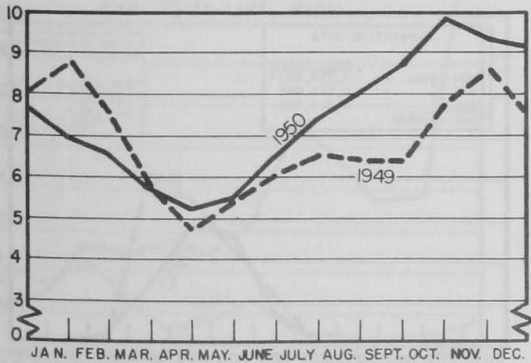
NEW ENGLAND - HOLDINGS OF FROZEN FISH



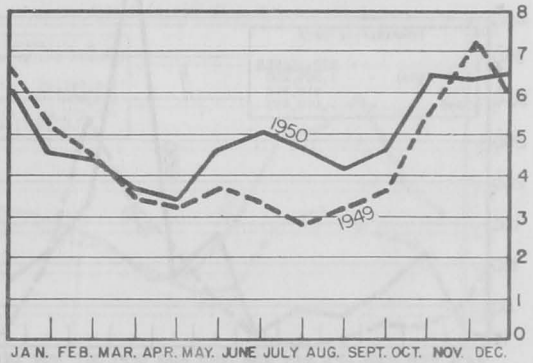
NEW YORK CITY - HOLDINGS OF FROZEN FISH



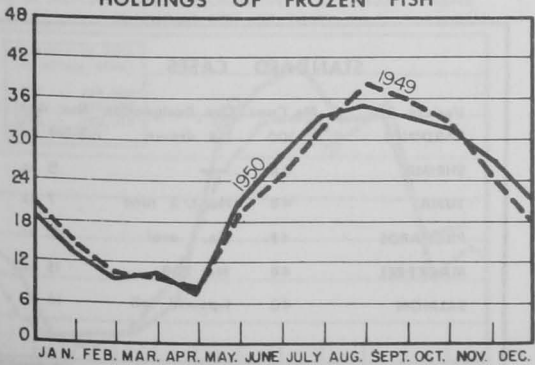
CHICAGO - HOLDINGS OF FROZEN FISH



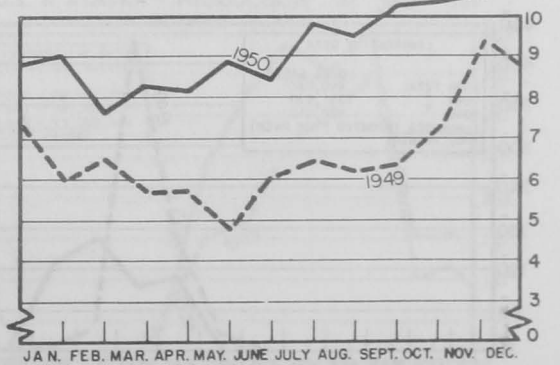
GULF - HOLDINGS OF FROZEN FISH



WASHINGTON, OREGON, AND ALASKA - HOLDINGS OF FROZEN FISH

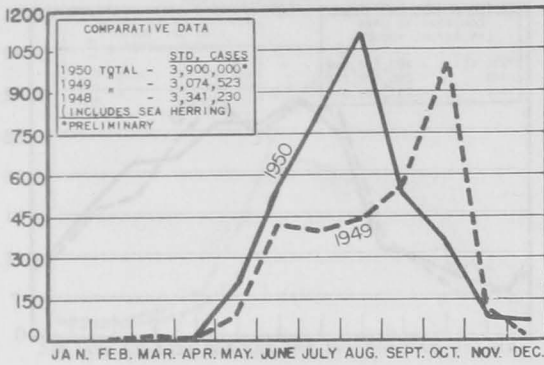


CALIFORNIA - HOLDINGS OF FROZEN FISH

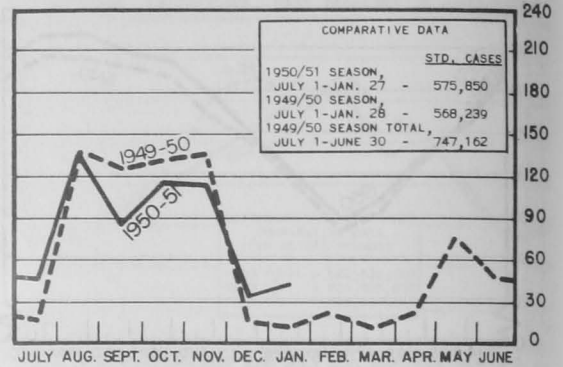


CANNED FISHERY PRODUCTS

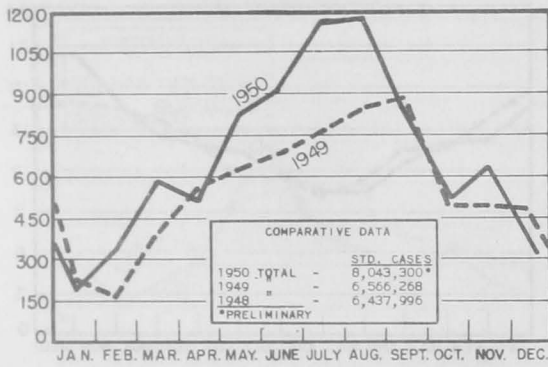
MAINE - SARDINES, ESTIMATED PACK



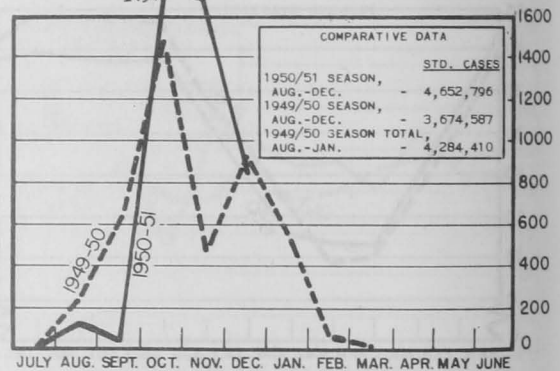
UNITED STATES - SHRIMP



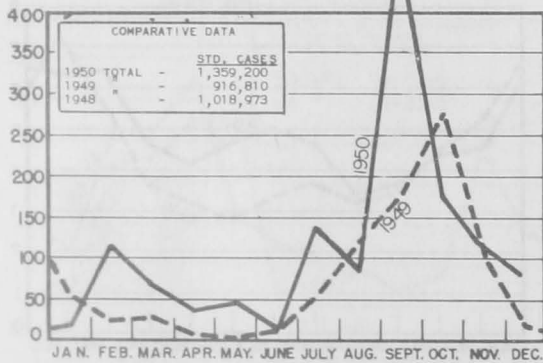
CALIFORNIA - TUNA AND TUNA-LIKE FISH



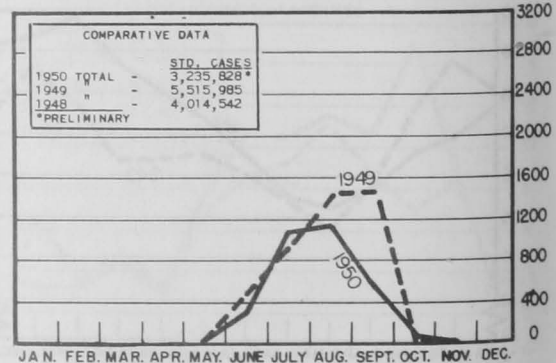
CALIFORNIA - PILCHARDS



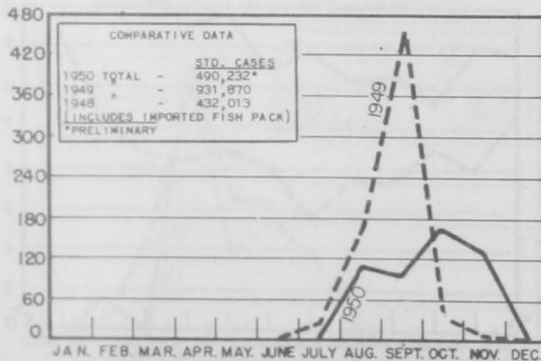
CALIFORNIA - MACKEREL



ALASKA - SALMON



WASHINGTON - PUGET SOUND SALMON

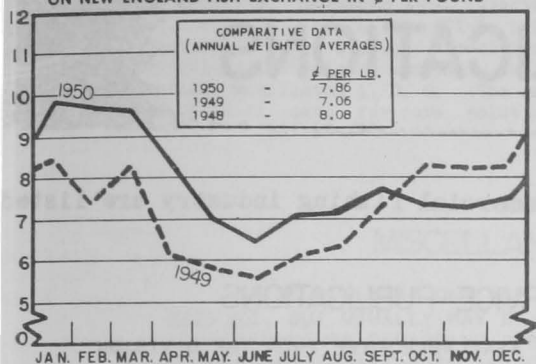


STANDARD CASES

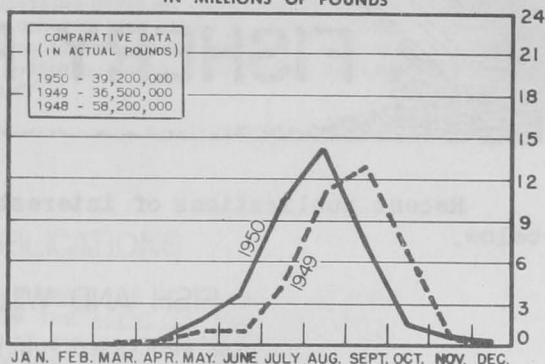
| Variety   | No. Cans | Can Designation | Net. Wgt. |
|-----------|----------|-----------------|-----------|
| SARDINES  | 100      | 1/4 drawn       | 3 1/4 oz. |
| SHRIMP    | 48       | —               | 5 oz.     |
| TUNA      | 48       | No. 1/2 tuna    | 7 oz.     |
| PILCHARDS | 48       | No. 1 oval      | 15 oz.    |
| MACKEREL  | 48       | No. 300         | 15 oz.    |
| SALMON    | 48       | 1-pound tall    | 16 oz.    |

## PRICES, IMPORTS and BY-PRODUCTS

**BOSTON - WEIGHTED AVERAGE PRICE ON NEW ENGLAND FISH EXCHANGE IN ¢ PER POUND**

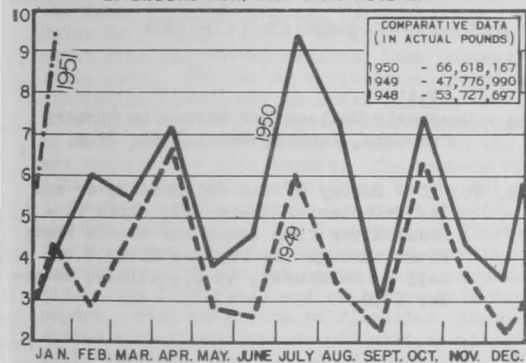


**MAINE - IMPORTS OF FRESH SEA HERRING IN MILLIONS OF POUNDS**

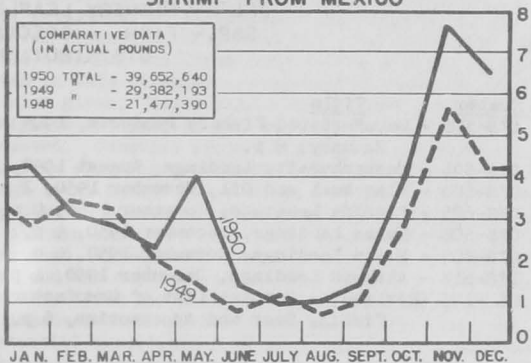


In Millions of Pounds

**U.S. - IMPORTS OF FRESH & FROZEN FILLETS OF GROUND FISH, INCLUDING ROSEFISH**

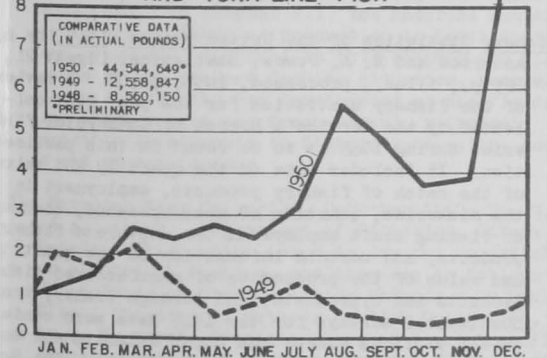


**U.S. - IMPORTS OF FRESH AND FROZEN SHRIMP FROM MEXICO**

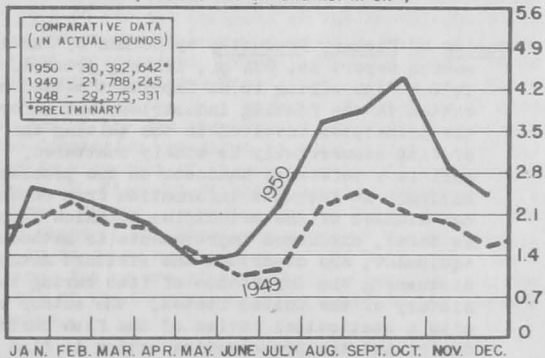


In Millions of Pounds

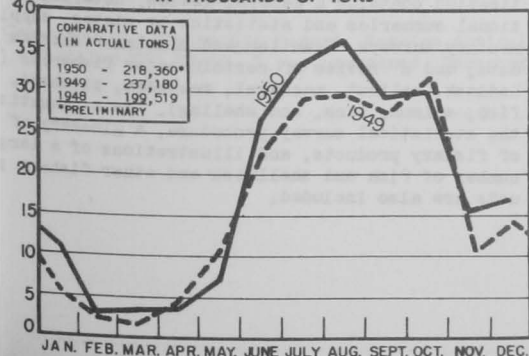
**U.S. - IMPORTS OF CANNED TUNA AND TUNA-LIKE FISH**



**U.S. - IMPORTS OF CANNED SARDINES (Include in oil and not in oil)**



**U.S. & ALASKA - PRODUCTION OF FISH MEAL IN THOUSANDS OF TONS**



**U.S. & ALASKA - PRODUCTION OF FISH OIL IN MILLIONS OF GALLONS**

