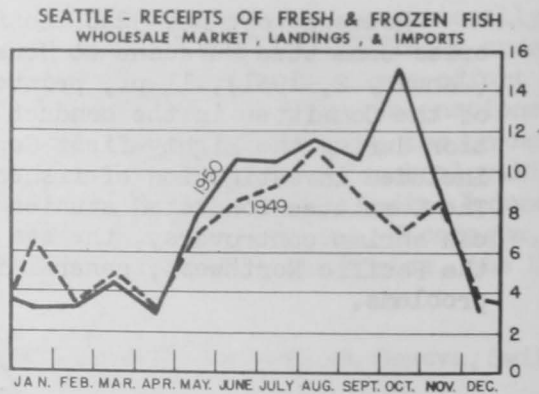
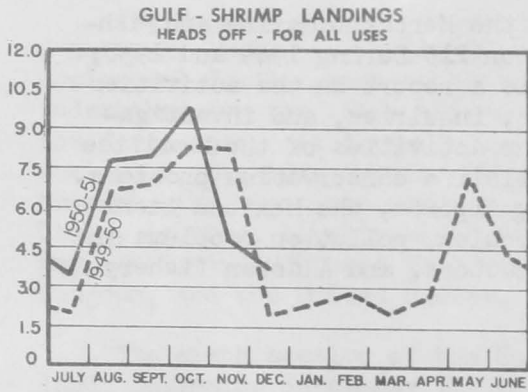
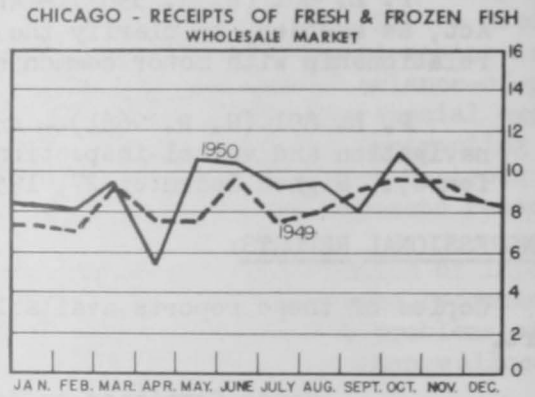
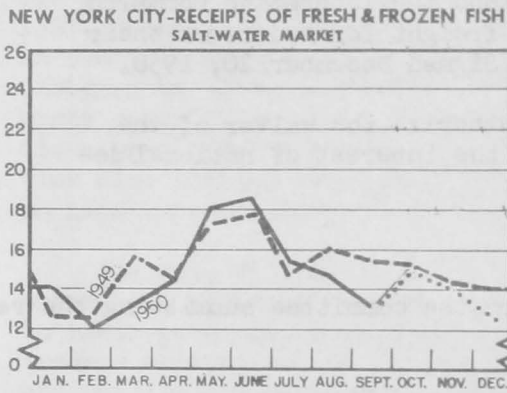
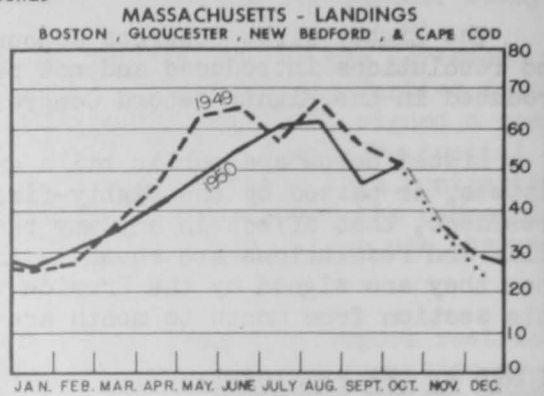
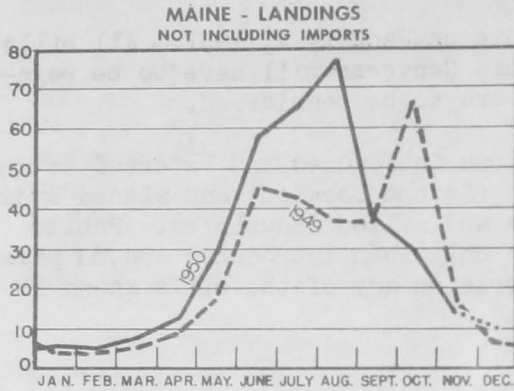
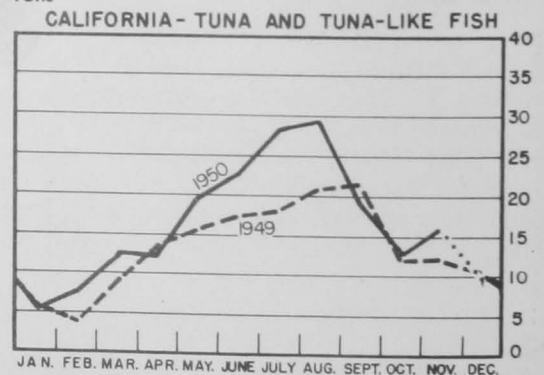
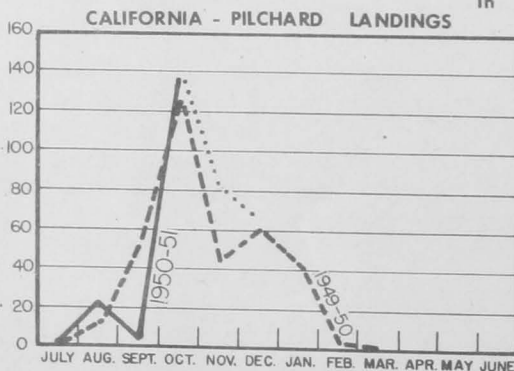


LANDINGS AND RECEIPTS

In Millions of Pounds



In Thousands of Tons

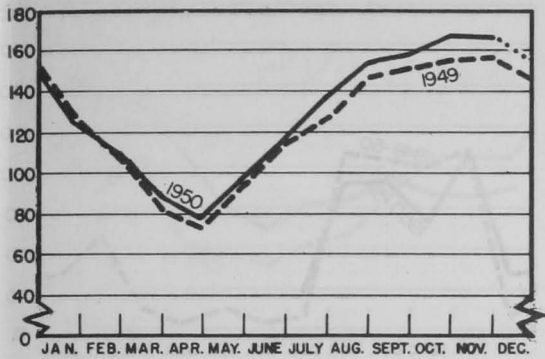


..... ESTIMATED

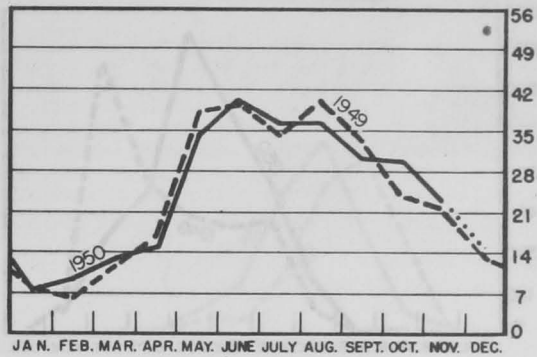
# COLD STORAGE HOLDINGS and FREEZINGS of FISHERY PRODUCTS

In Millions of Pounds

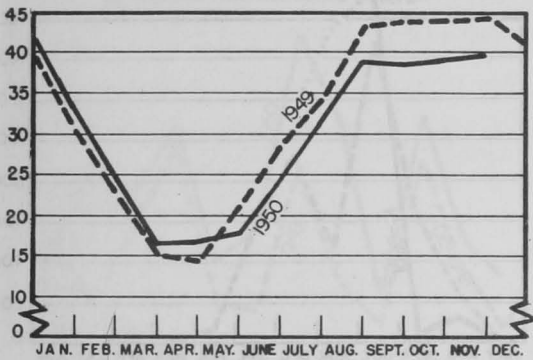
### U.S. & ALASKA - HOLDINGS OF FROZEN FISH



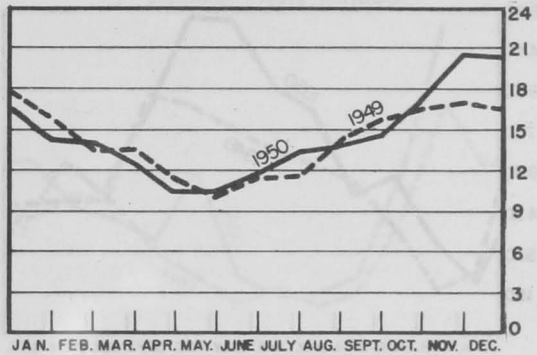
### U.S. & ALASKA - FREEZINGS



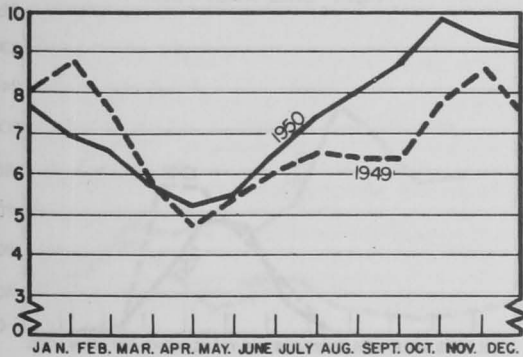
### NEW ENGLAND - HOLDINGS OF FROZEN FISH



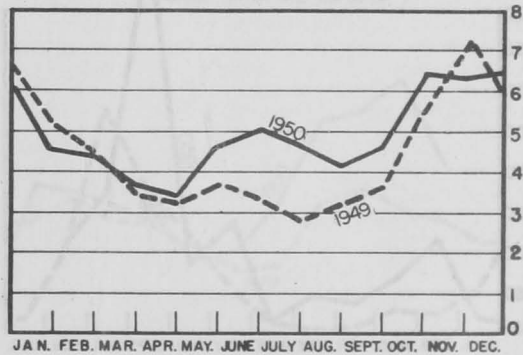
### NEW YORK CITY - HOLDINGS OF FROZEN FISH



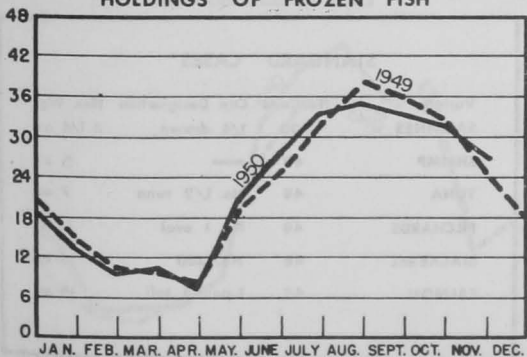
### CHICAGO - HOLDINGS OF FROZEN FISH



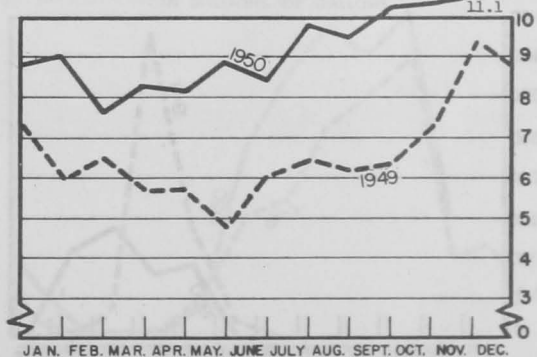
### GULF - HOLDINGS OF FROZEN FISH



### WASHINGTON, OREGON, AND ALASKA - HOLDINGS OF FROZEN FISH

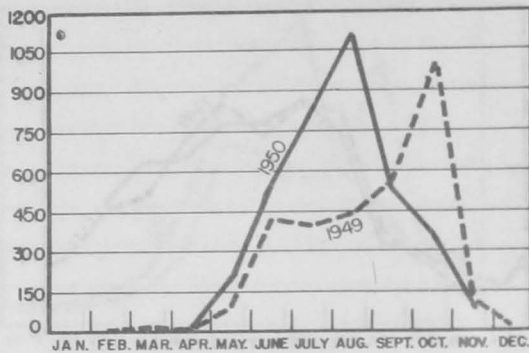


### CALIFORNIA - HOLDINGS OF FROZEN FISH

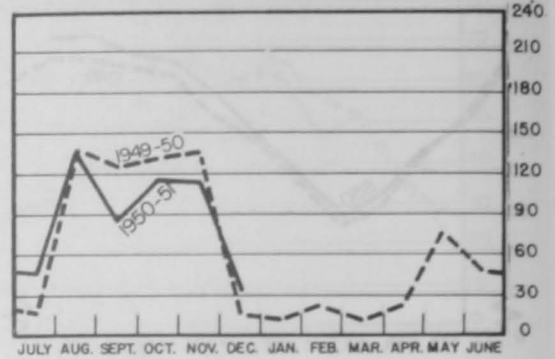


CANNED FISHERY PRODUCTS

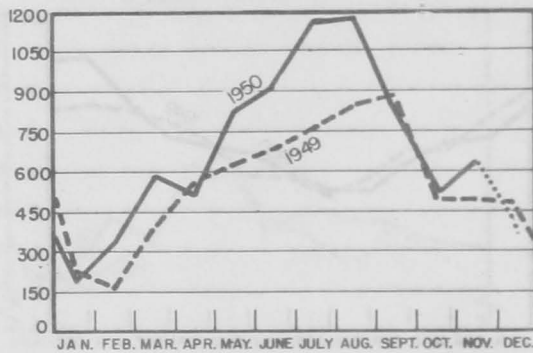
In Thousands of Standard Cases  
MAINE - SARDINES, ESTIMATED PACK



UNITED STATES - SHRIMP



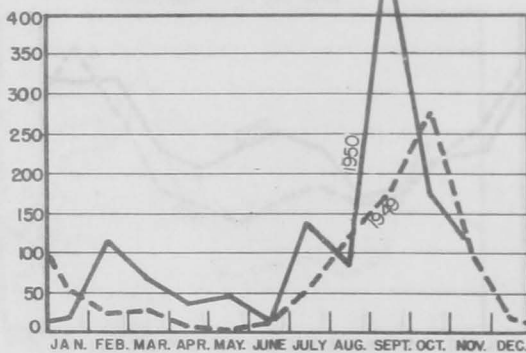
CALIFORNIA - TUNA AND TUNA-LIKE FISH



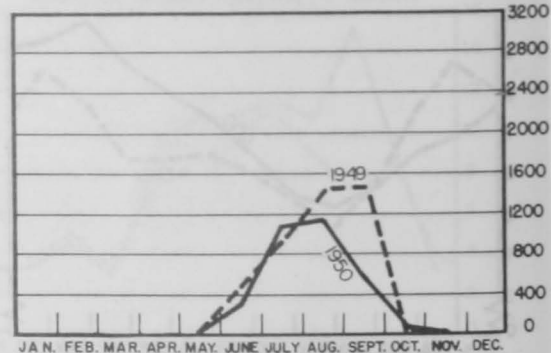
CALIFORNIA - PILCHARDS



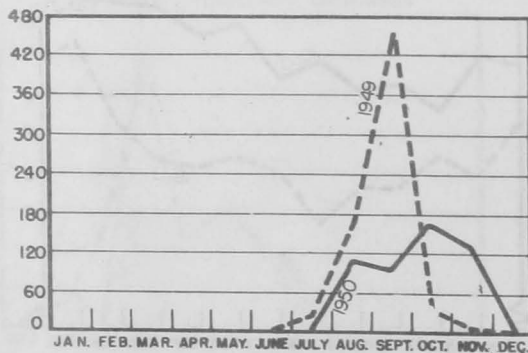
CALIFORNIA - MACKEREL



ALASKA - SALMON



WASHINGTON - PUGET SOUND SALMON



STANDARD CASES

Variety	No. Cans	Can Designation	Net. Wgt.
SARDINES	100	1/4 drawn	3 1/4 oz.
SHRIMP	48	—	5 oz.
TUNA	48	No. 1/2 tuna	7 oz.
PILCHARDS	48	No. 1 oval	15 oz.
MACKEREL	48	No. 300	15 oz.
SALMON	48	1-pound tall	16 oz.

PRICES, IMPORTS and BY-PRODUCTS

