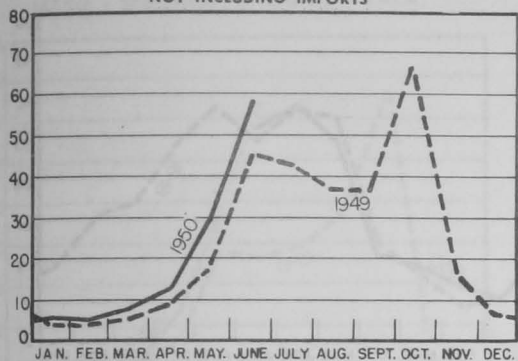


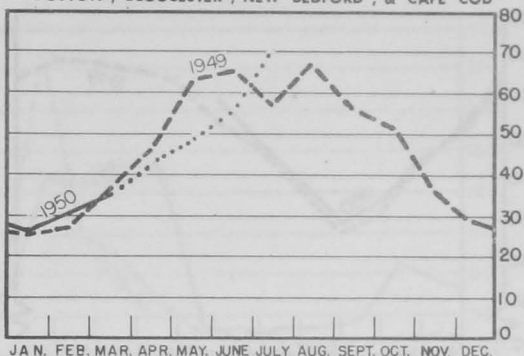
LANDINGS AND RECEIPTS

In Millions of Pounds

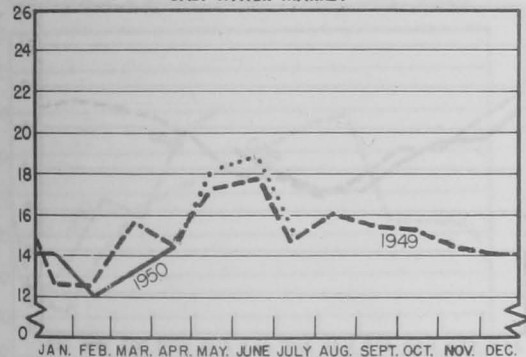
MAINE - LANDINGS  
NOT INCLUDING IMPORTS



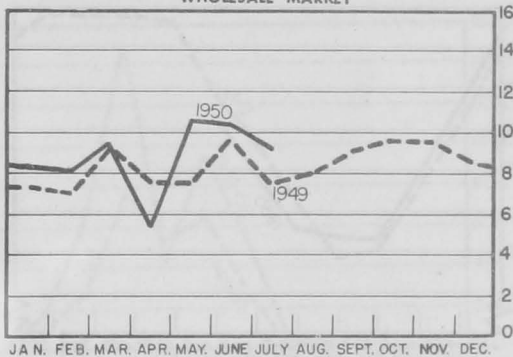
MASSACHUSETTS - LANDINGS  
BOSTON, GLOUCESTER, NEW BEDFORD, & CAPE COD



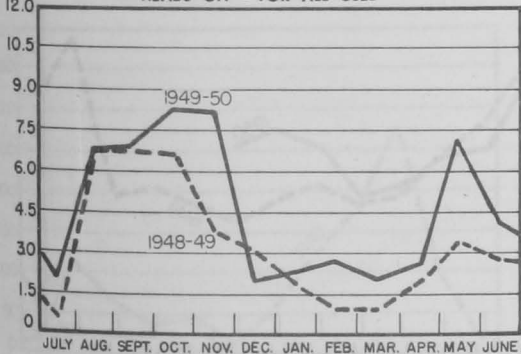
NEW YORK CITY - RECEIPTS OF FRESH & FROZEN FISH  
SALT-WATER MARKET



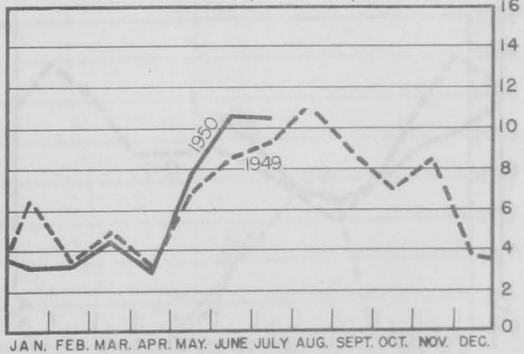
CHICAGO - RECEIPTS OF FRESH & FROZEN FISH  
WHOLESALE MARKET



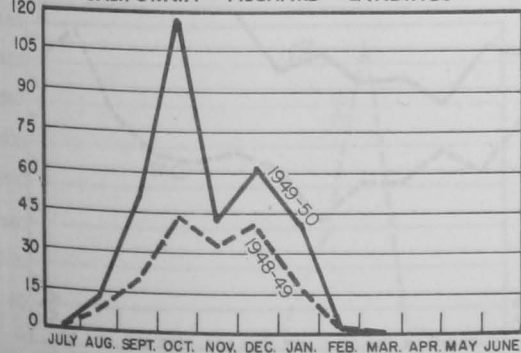
GULF - SHRIMP LANDINGS  
HEADS OFF - FOR ALL USES



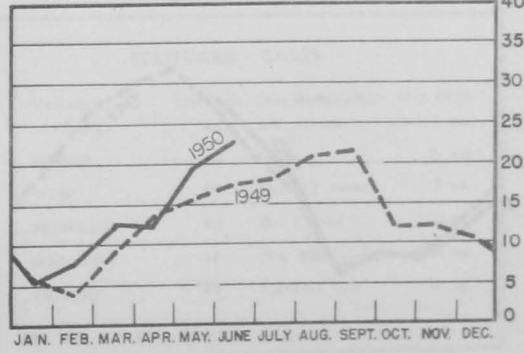
SEATTLE - RECEIPTS OF FRESH & FROZEN FISH  
WHOLESALE MARKET, LANDINGS, & IMPORTS



CALIFORNIA - PILCHARD LANDINGS



CALIFORNIA - TUNA AND TUNA-LIKE FISH

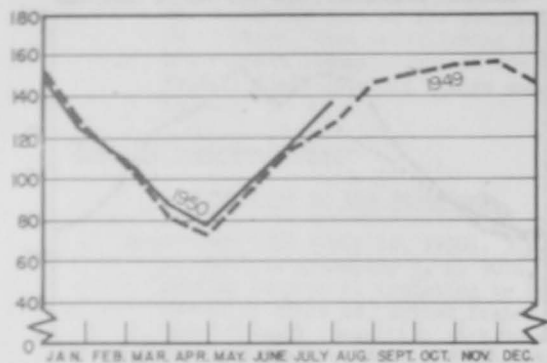


..... ESTIMATED

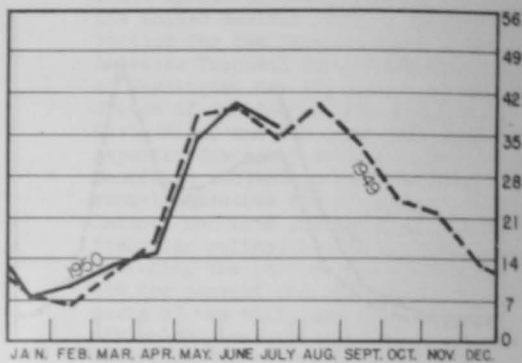
COLD STORAGE HOLDINGS and FREEZINGS of FISHERY PRODUCTS

In Millions of Pounds

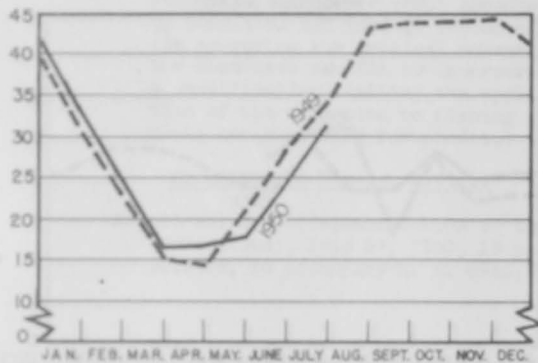
U.S. & ALASKA - HOLDINGS OF FROZEN FISH



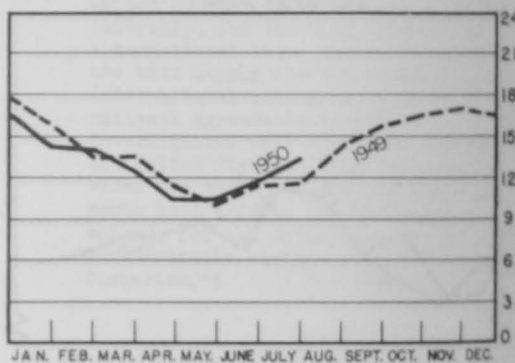
U.S. & ALASKA - FREEZINGS



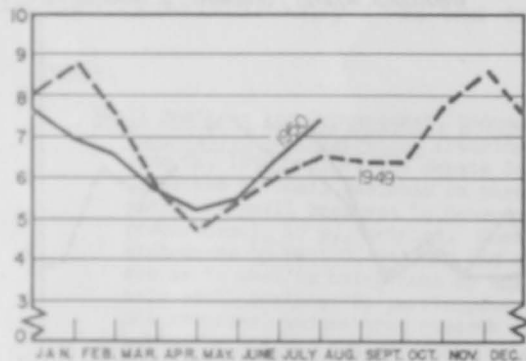
NEW ENGLAND - HOLDINGS OF FROZEN FISH



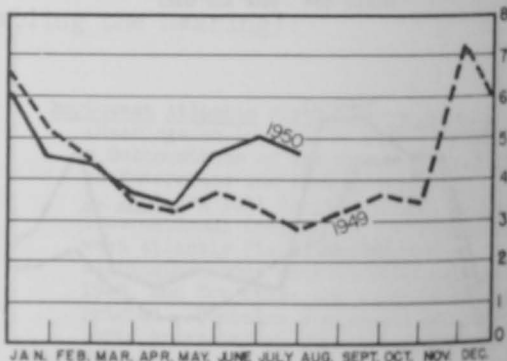
NEW YORK CITY - HOLDINGS OF FROZEN FISH



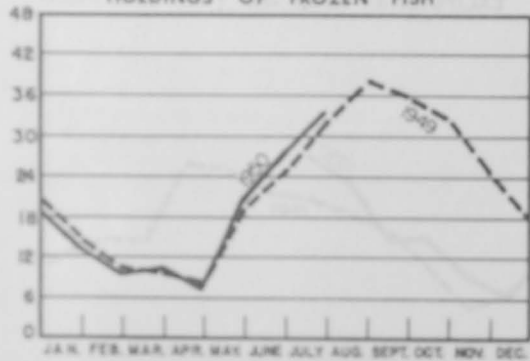
CHICAGO - HOLDINGS OF FROZEN FISH



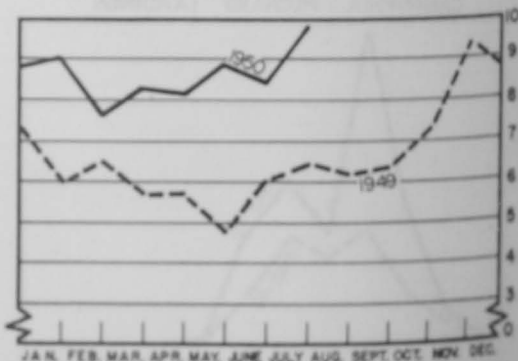
GULF - HOLDINGS OF FROZEN FISH



WASHINGTON, OREGON, AND ALASKA - HOLDINGS OF FROZEN FISH

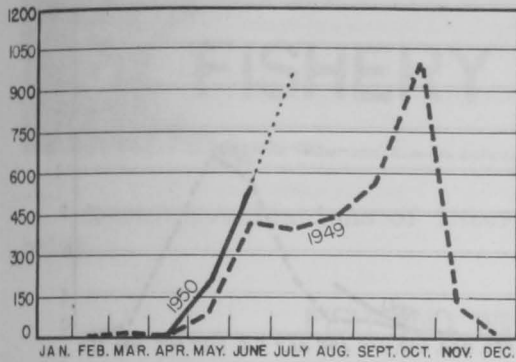


CALIFORNIA - HOLDINGS OF FROZEN FISH

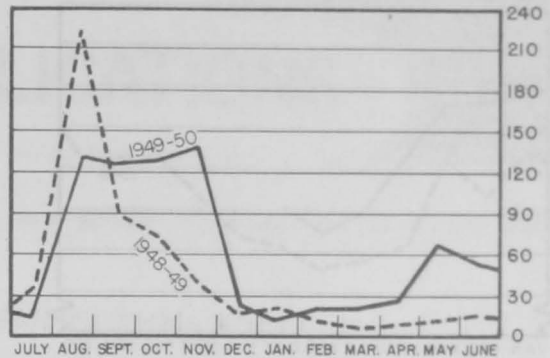


CANNED FISHERY PRODUCTS

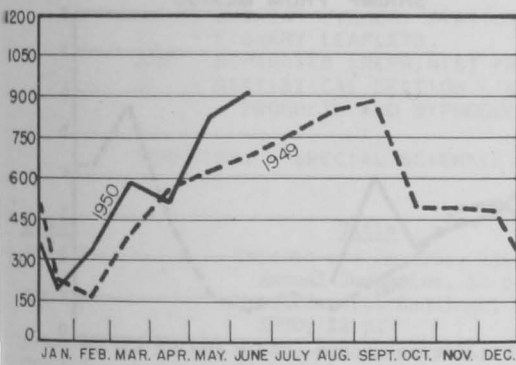
MAINE - SARDINES, ESTIMATED PACK In Thousands of Standard Cases



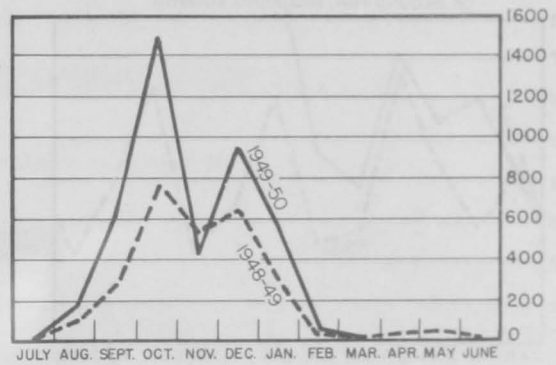
UNITED STATES - SHRIMP



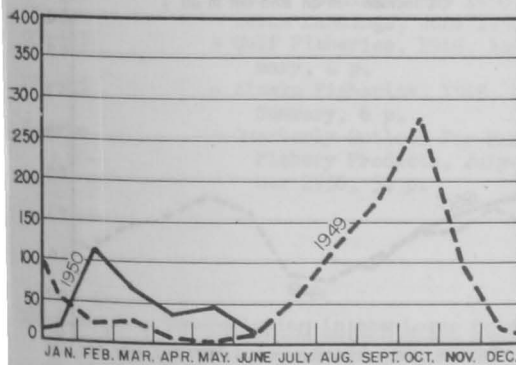
CALIFORNIA - TUNA AND TUNA-LIKE FISH



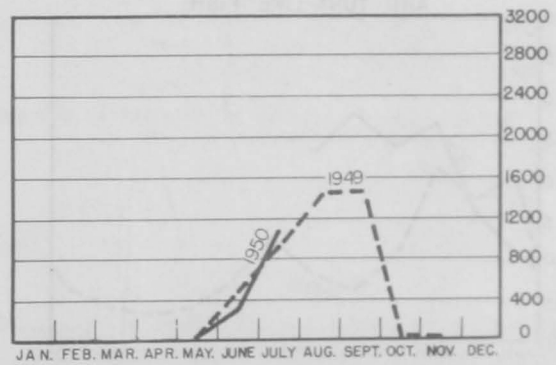
CALIFORNIA - PILCHARDS



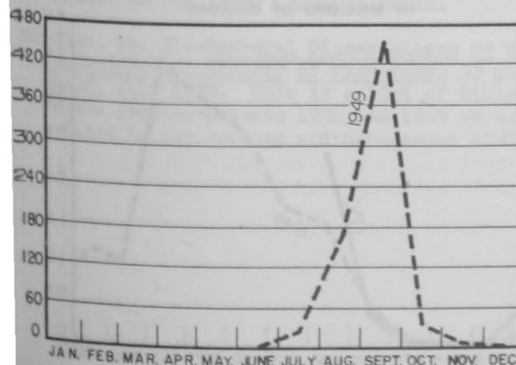
CALIFORNIA - MACKEREL



ALASKA - SALMON



WASHINGTON - PUGET SOUND SALMON



STANDARD CASES

Variety	No. Cans	Can Designation	Net. Wgt.
SARDINES	100	1/4 drawn	3 1/4 oz.
SHRIMP	48	—	5 oz.
TUNA	48	No. 1/2 tuna	7 oz.
PILCHARDS	48	No. 1 oval	15 oz.
MACKEREL	48	No. 300	15 oz.
SALMON	48	1-pound tall	16 oz.

PRICES, IMPORTS and BY-PRODUCTS

