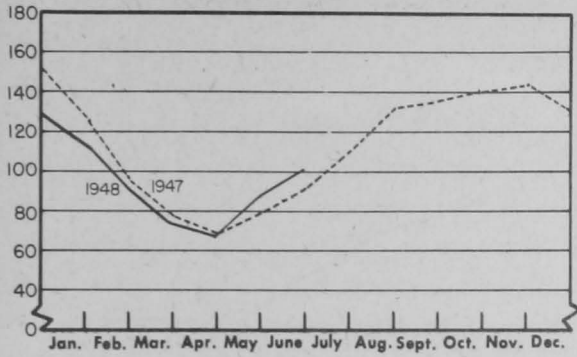


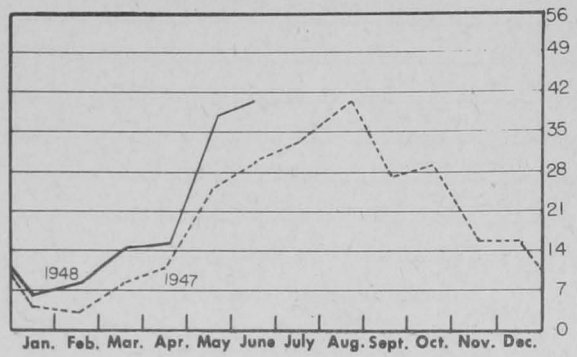
COLD STORAGE HOLDINGS and FREEZINGS of FISHERY PRODUCTS

In Millions of Pounds

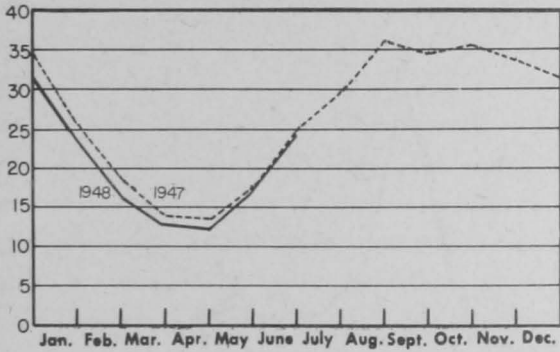
U.S. & ALASKA - HOLDINGS OF FROZEN FISH



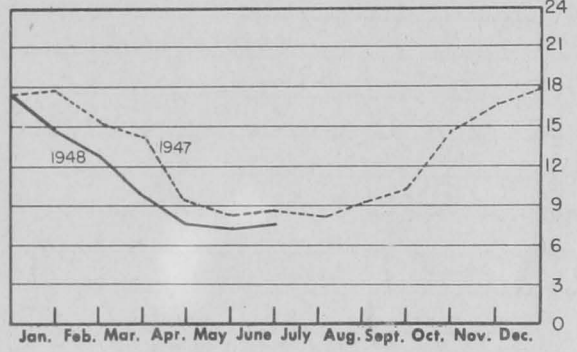
U.S. & ALASKA - FREEZINGS



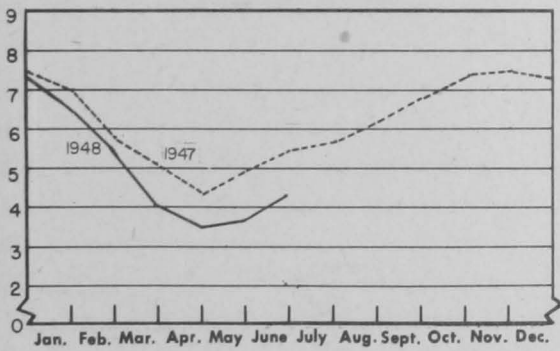
NEW ENGLAND - HOLDINGS OF FROZEN FISH



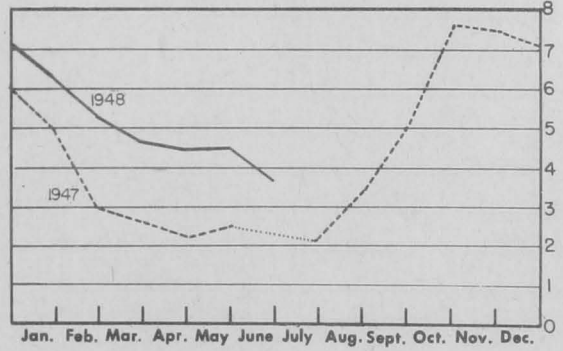
NEW YORK CITY - HOLDINGS OF FROZEN FISH



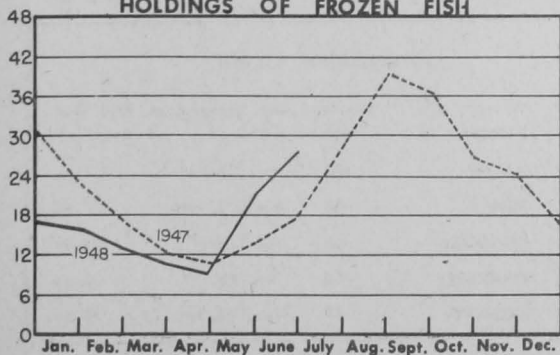
CHICAGO - HOLDINGS OF FROZEN FISH



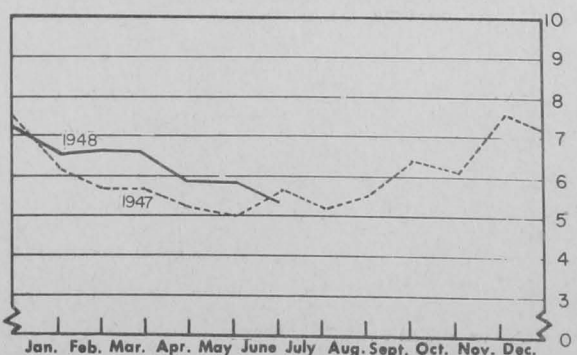
GULF - HOLDINGS OF FROZEN FISH



WASHINGTON, OREGON, AND ALASKA - HOLDINGS OF FROZEN FISH



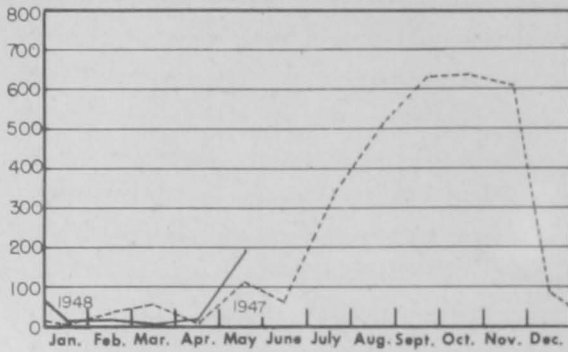
CALIFORNIA - HOLDINGS OF FROZEN FISH



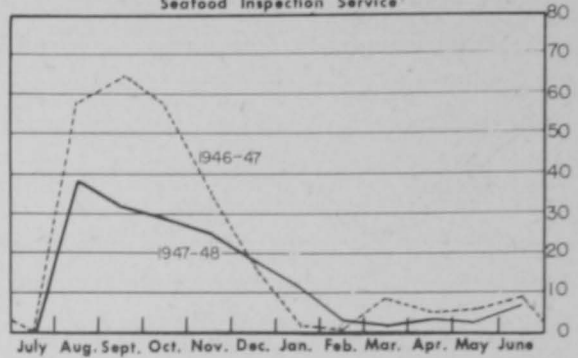
CANNED FISHERY PRODUCTS

In Thousands of Standard Cases

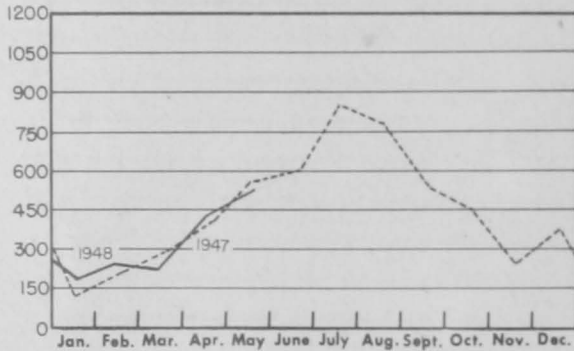
MAINE - SARDINES, ESTIMATED PACK



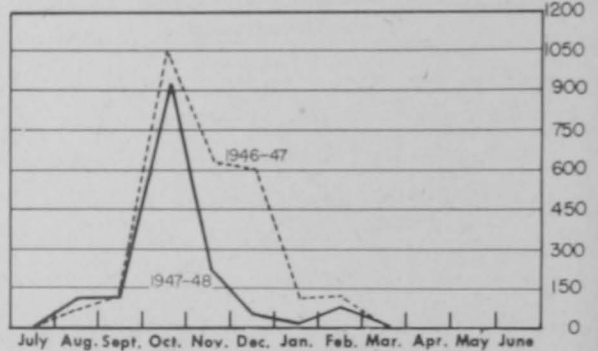
UNITED STATES - SHRIMP
Plants under Food and Drug Administration
Seafood Inspection Service



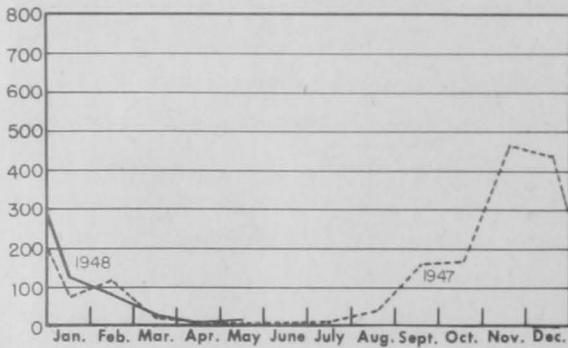
CALIFORNIA - TUNA



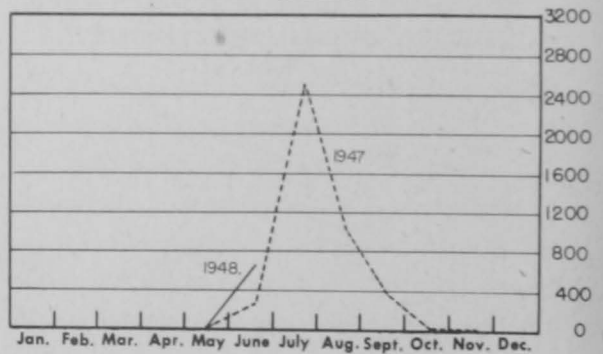
CALIFORNIA - PILCHARDS



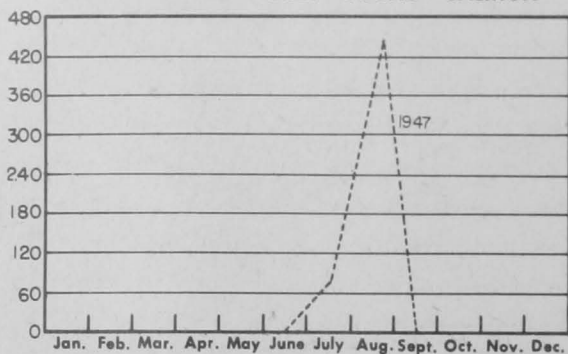
CALIFORNIA - MACKEREL



ALASKA - SALMON



WASHINGTON - PUGET SOUND SALMON

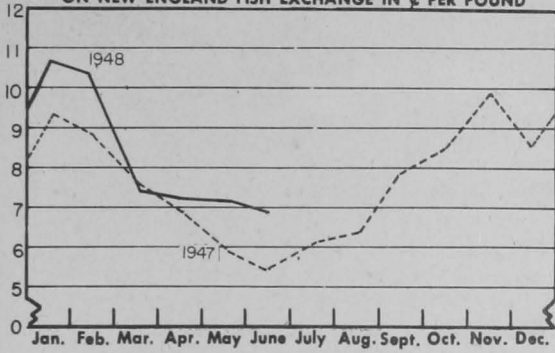


STANDARD CASES

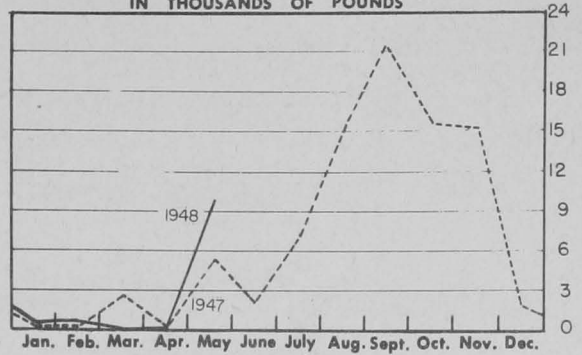
Variety	No. Cans	Can Designation	Net. Wgt.
SARDINES	100	1/4 drawn	3 1/4 oz.
SHRIMP	48	No.1 picnic	7 oz.
TUNA	48	No. 1/2 tuna	7 oz.
PILCHARDS	48	No. 1 oval	15 oz.
MACKEREL	48	No. 300	15 oz.
SALMON	48	1-pound tall	16 oz.

PRICES, IMPORTS and BY-PRODUCTS

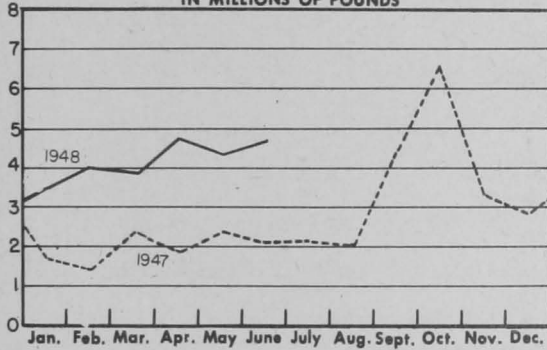
**BOSTON - WEIGHTED AVERAGE PRICE
ON NEW ENGLAND FISH EXCHANGE IN ¢ PER POUND**



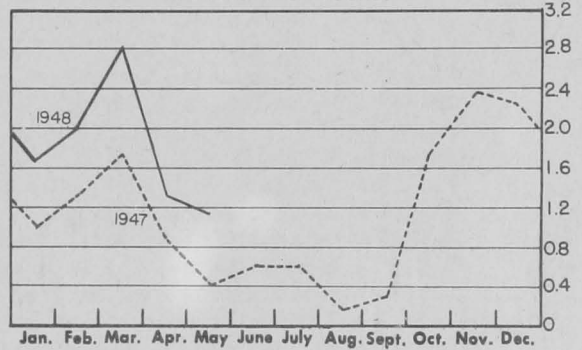
**MAINE - IMPORTS OF SEA HERRING
IN THOUSANDS OF POUNDS**



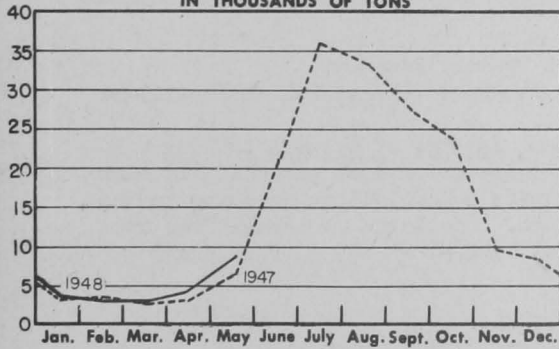
**U.S. - IMPORTS OF FRESH & FROZEN FILLETS
OF GROUND FISH, INCLUDING ROSEFISH:-
IN MILLIONS OF POUNDS**



**U.S. - IMPORTS OF SHRIMP FROM MEXICO
IN MILLIONS OF POUNDS**



**U.S. & ALASKA - PRODUCTION OF FISH MEAL
IN THOUSANDS OF TONS**



**U.S. & ALASKA - PRODUCTION OF FISH OIL
IN MILLIONS OF GALLONS**

