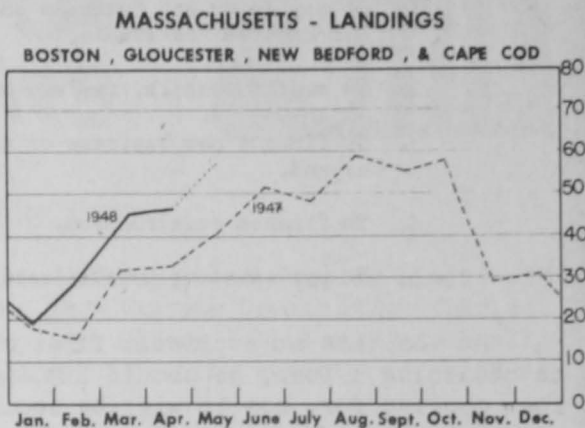
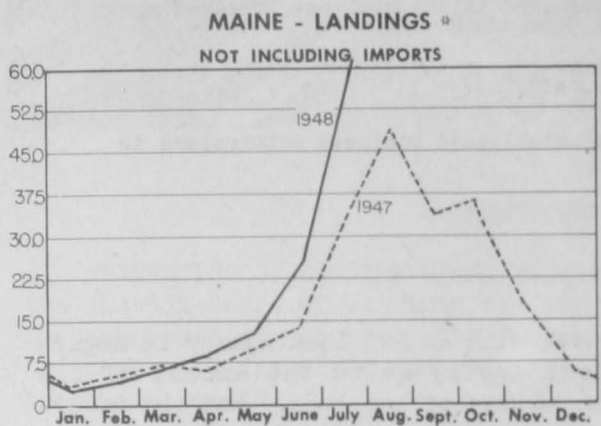
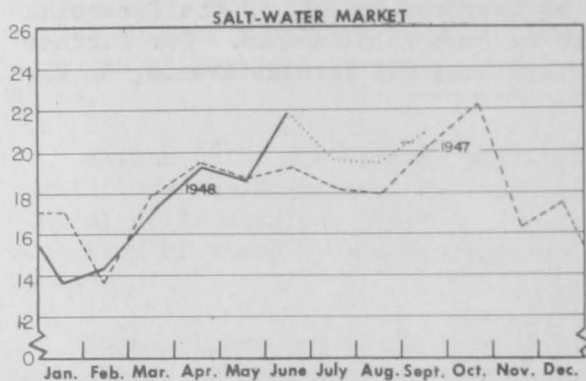


LANDINGS AND RECEIPTS

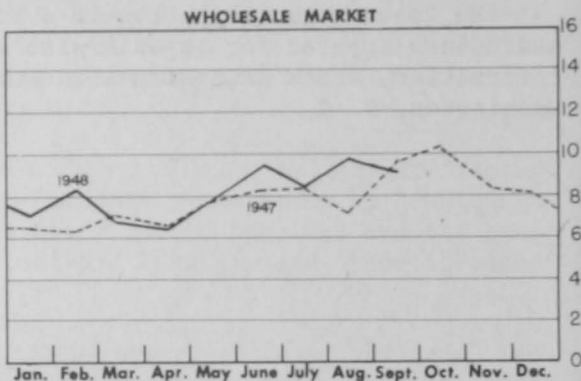
In Millions of Pounds



NEW YORK CITY - RECEIPTS OF FRESH & FROZEN FISH

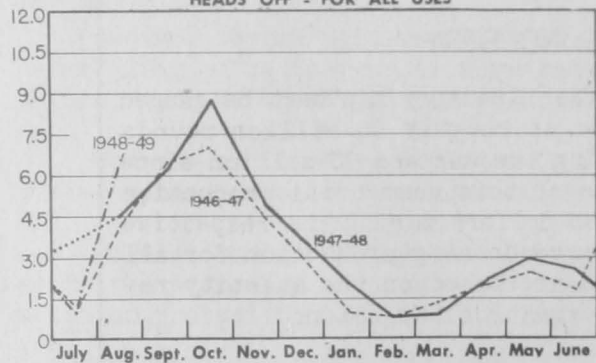


CHICAGO - RECEIPTS OF FRESH & FROZEN FISH



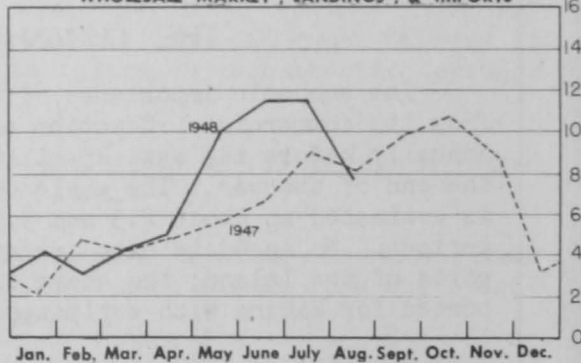
GULF - SHRIMP LANDINGS

HEADS OFF - FOR ALL USES



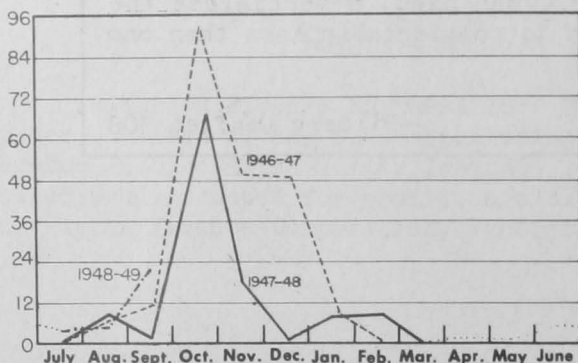
SEATTLE - RECEIPTS OF FRESH & FROZEN FISH

WHOLESALE MARKET, LANDINGS, & IMPORTS

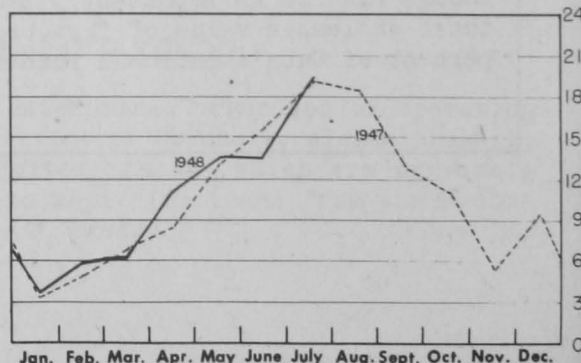


In Thousands of Tons

CALIFORNIA - PILCHARD LANDINGS



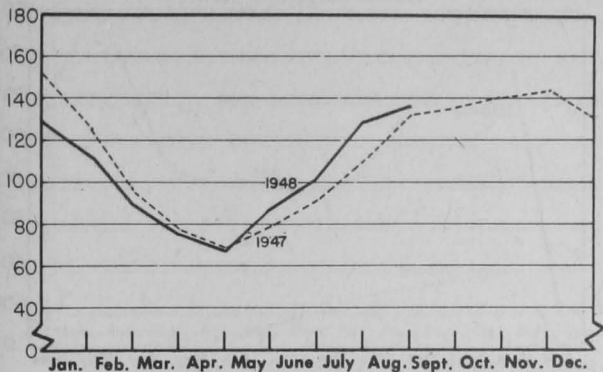
CALIFORNIA - TUNA LANDINGS



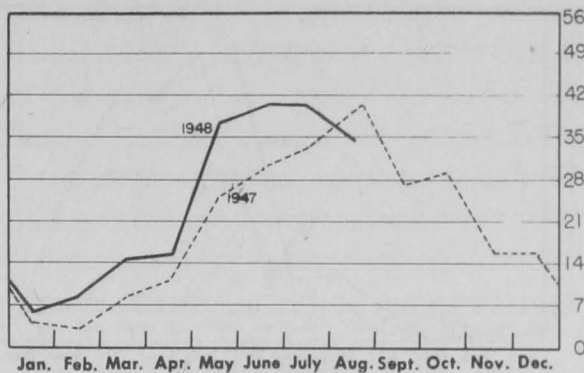
COLD STORAGE HOLDINGS and FREEZINGS of FISHERY PRODUCTS

In Millions of Pounds

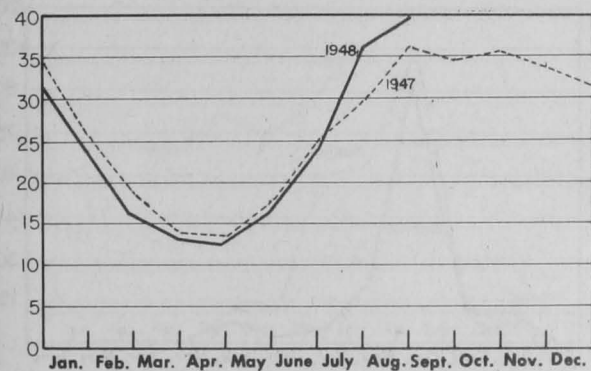
U.S. & ALASKA - HOLDINGS OF FROZEN FISH



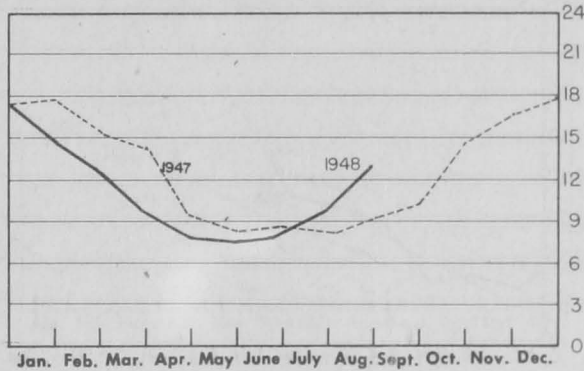
U.S. & ALASKA - FREEZINGS



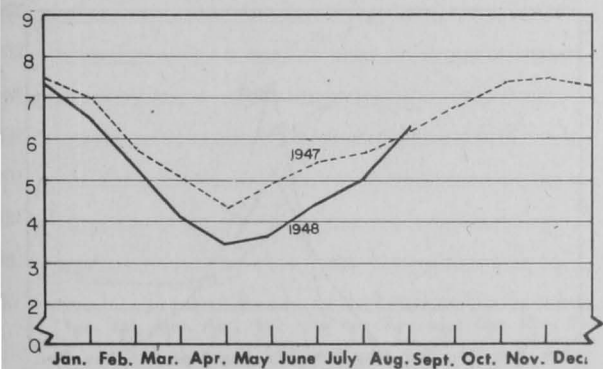
NEW ENGLAND - HOLDINGS OF FROZEN FISH



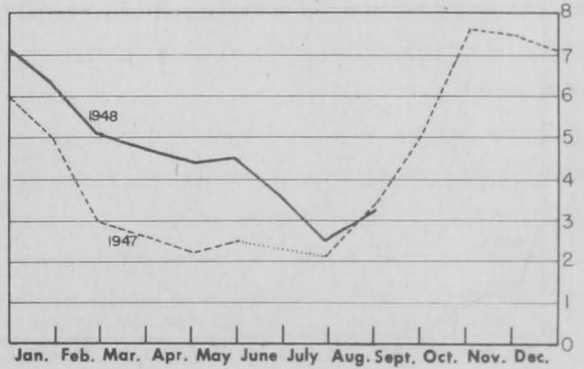
NEW YORK CITY - HOLDINGS OF FROZEN FISH



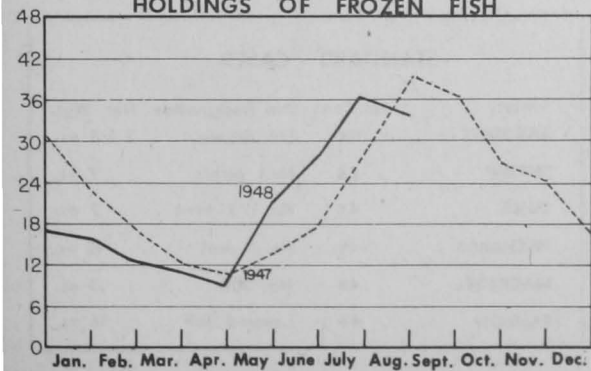
CHICAGO - HOLDINGS OF FROZEN FISH



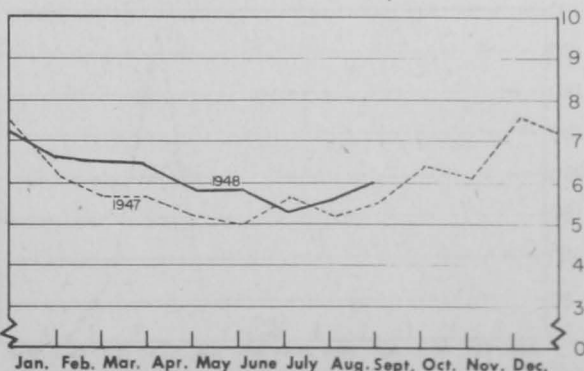
GULF - HOLDINGS OF FROZEN FISH



WASHINGTON, OREGON, AND ALASKA - HOLDINGS OF FROZEN FISH



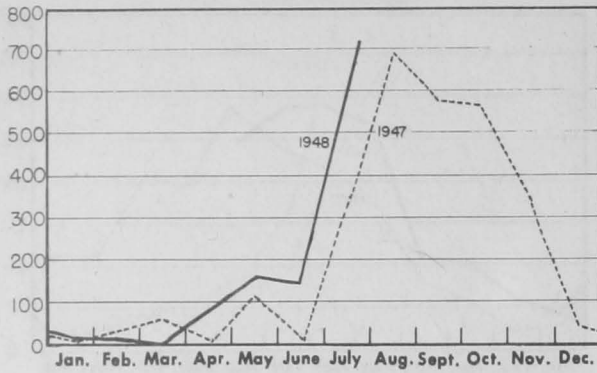
CALIFORNIA - HOLDINGS OF FROZEN FISH



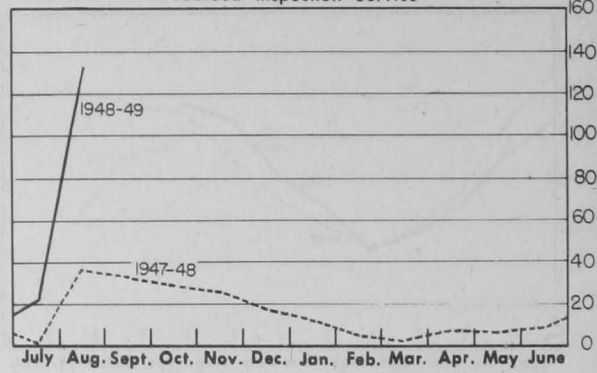
CANNED FISHERY PRODUCTS

In Thousands of Standard Cases

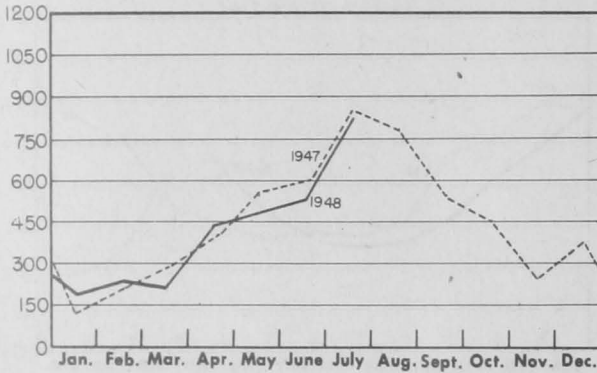
MAINE - SARDINES, ESTIMATED PACK *



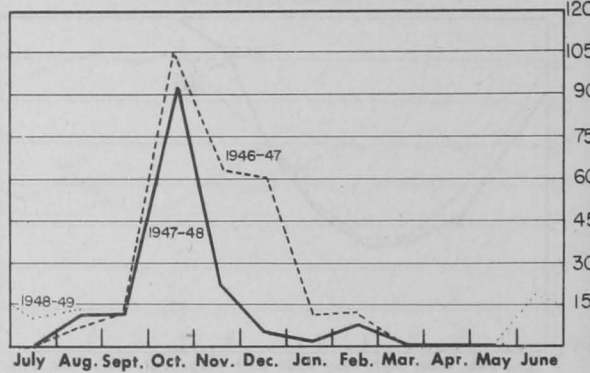
UNITED STATES - SHRIMP
Plants under Food and Drug Administration
Seafood Inspection Service



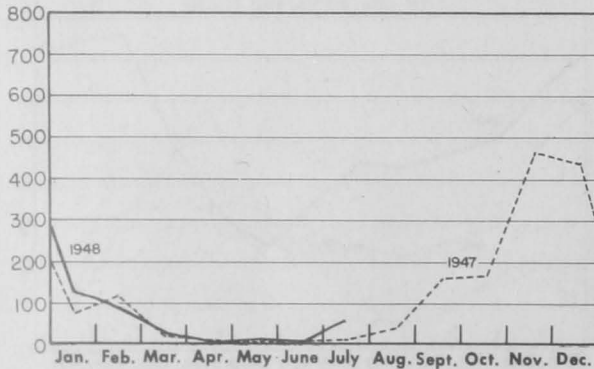
CALIFORNIA - TUNA



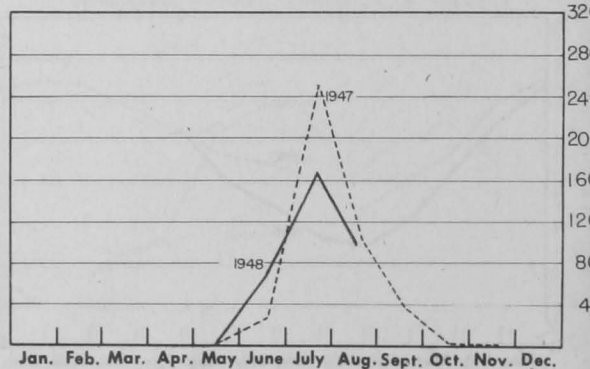
CALIFORNIA - PILCHARDS



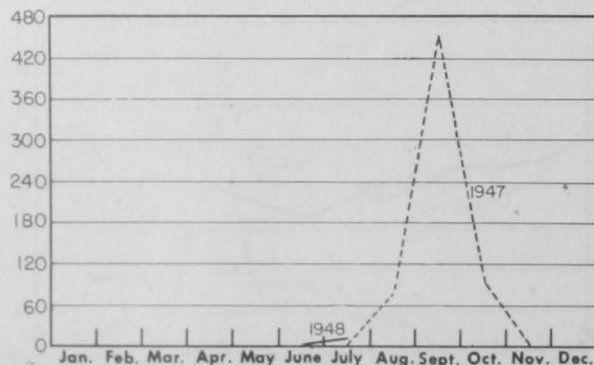
CALIFORNIA - MACKEREL



ALASKA - SALMON



WASHINGTON - PUGET SOUND SALMON *



STANDARD CASES

Variety	No. Cans	Can Designation	Net. Wgt.
SARDINES	100	1/4 drawn	3 1/4 oz.
SHRIMP	48	No.1 picnic	7 oz.
TUNA	48	No. 1/2 tuna	7 oz.
PILCHARDS	48	No. 1 oval	15 oz.
MACKEREL	48	No. 300	15 oz.
SALMON	48	1-pound tall	16 oz.

