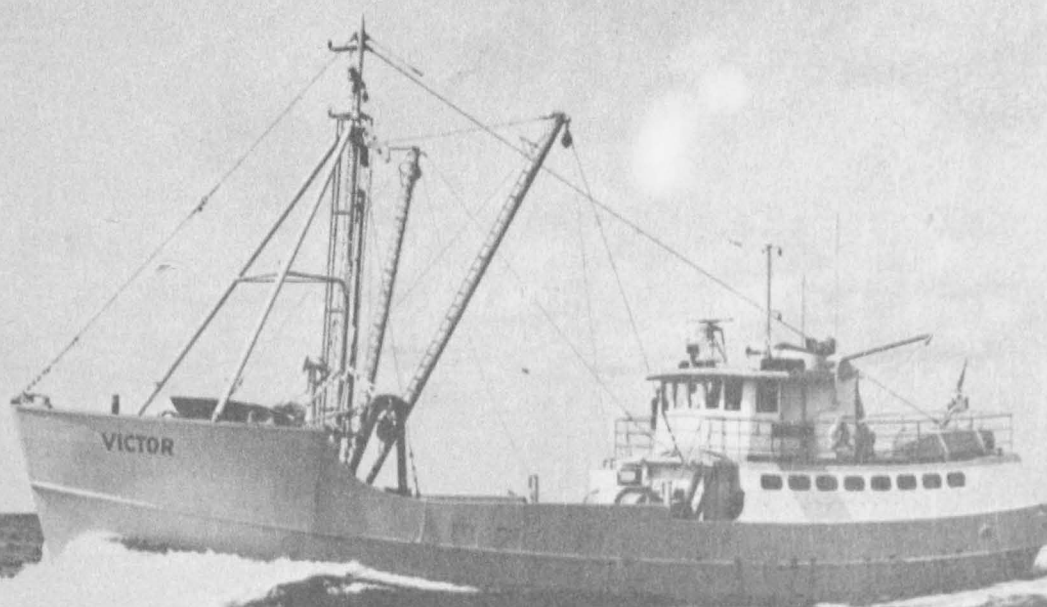


Statistics of the VESSELS DOCUMENTED AS FISHING CRAFT 1957-66



UNITED STATES DEPARTMENT OF THE INTERIOR
FISH AND WILDLIFE SERVICE
BUREAU OF COMMERCIAL FISHERIES

Fishery Leaflet 610

COVER: The Victor (164 gross tons, 80 feet long, 765 horsepower) was built in 1966. It was the first vessel to be approved for construction under the U.S. Fishing Fleet Improvement Act (P.L. 88-498).

UNITED STATES DEPARTMENT OF THE INTERIOR
Stewart L. Udall, *Secretary*
David S. Black, *Under Secretary*
Stanley A. Cain, *Assistant Secretary for Fish and Wildlife and Parks*
FISH AND WILDLIFE SERVICE, Clarence F. Pautzke, *Commissioner*
BUREAU OF COMMERCIAL FISHERIES, H. E. Crowther, *Director*

STATISTICS
OF THE
VESSELS DOCUMENTED AS
FISHING CRAFT
1957-66

by
Charles H. Lyles
Chief, Branch of Fishery Statistics
Division of Economics

Fishery Leaflet 610

Washington, D.C. 20240
December 1967

CONTENTS

	Page
Introduction.	1
Summary by year built, 1957-66.	6
Summary of tonnage distribution, 1957-66.	8
Summary of length distribution, 1957-66	11
Summary of horsepower distribution, 1957-66	12
Tonnage distribution, 1957.	13
Tonnage distribution, 1958.	14
Tonnage distribution, 1959.	15
Tonnage distribution, 1960.	16
Tonnage distribution, 1961.	17
Tonnage distribution, 1962.	18
Tonnage distribution, 1963.	19
Tonnage distribution, 1964.	20
Tonnage distribution, 1965.	21
Tonnage distribution, 1966.	22
Length distribution, 1957	24
Length distribution, 1958	24
Length distribution, 1959	25
Length distribution, 1960	26
Length distribution, 1961	27
Length distribution, 1962	28
Length distribution, 1963	29
Length distribution, 1964	29
Length distribution, 1965	30
Length distribution, 1966	31
Horsepower distribution, 1957	33
Horsepower distribution, 1958	34
Horsepower distribution, 1959	35
Horsepower distribution, 1960	36
Horsepower distribution, 1961	37
Horsepower distribution, 1962	38
Horsepower distribution, 1963	39
Horsepower distribution, 1964	40
Horsepower distribution, 1965	41
Horsepower distribution, 1966	42
New England tonnage distribution, 1957-66	44
Middle Atlantic tonnage distribution, 1957-66	45
Chesapeake tonnage distribution, 1957-66.	46
South Atlantic tonnage distribution, 1957-66.	47
Gulf tonnage distribution, 1957-66.	48
Pacific Coast tonnage distribution, 1957-66	50
Great Lakes tonnage distribution, 1957-66	52
Hawaii tonnage distribution, 1957-66.	53
Other ports tonnage distribution, 1957-66	53
Tonnage distribution by regions, 1957-66.	54
Length distribution by regions, 1957-66	57
Horsepower distribution by regions, 1957-66	58
Appendix.	60



INTRODUCTION

By
Charles H. Lyles, Chief
Branch of Fishery Statistics
Division of Economics
Washington, D.C. 20240

The Branch of Fishery Statistics, Washington, D.C., receives numerous inquiries for information on trends in new construction of U.S. fishing vessels. Demand for these data increased during the past year and a half with the adoption of PPB (Program Planning and Budgeting) techniques by the Bureau of Commercial Fisheries. To meet this need, data on the physical characteristics of vessels documented as fishing craft were assembled for 1957-66. I recognize that the short time span covered by this report is insufficient to meet all the needs of those interested in the trends of new construction in the fishing fleet. Time and resources did not permit a more extensive review.

The Bureau of Commercial Fisheries publishes current data on the number of vessels obtaining documents as fishing craft. These are compiled from the U.S. Coast Guard Monthly Supplement to Merchant Vessels of the United States. This publication and Coast Guard documents are the sources of data for this publication. Since 1964, these data have been published annually in U.S. Fish and Wildlife Service Fisheries of the United States. A table in each issue shows the physical characteristics of these craft for each section of the country. To get a larger prospective I decided to use the statistics for the last 10 years. Despite some fluctuations from year to year these data show certain definite trends.

U.S. merchant vessels (including fishing craft 5 net tons or over) are documented by the U.S. Coast Guard, Department of Transportation, under authority of 46 U.S.C. 251. This responsibility was transferred from the Bureau of Customs to the Coast Guard by Treasury Order 167-81. Excerpts from title 46 appear as an appendix and give a detailed description of some of the terms and definitions used in the following pages. Vessels of 5 net tons or greater, engaged in commerce in U.S. coastal waters or on the high seas and operating from a U.S. port, are required to be documented. Three types of vessel documents are issued.

1. Registered--vessel with a home port in the United States, engaged in foreign commerce.
2. Licensed--any vessel of less than 20 tons engaged in coastal trade or fishing.
3. Enrolled--any vessel of 20 tons or over engaged in coastal trade or fishing.

Before a new vessel is completed, the prospective owner must make application for documentation. Subsequently, an authorized agent of the Coast Guard (called the ad-measurer) measures the vessel according to specific rules. (The procedure is described in a Bureau of Customs publication, Measurement of Vessels, that may be obtained from the U.S. Government Printing Office, Washington, D.C. 20401.) The physical characteristics of the vessel (length, breadth, gross tons, net tons, etc.,) are determined by the ad-measurer and entered on the vessels document. A builder's certificate is necessary for documentation and must show among other things, when, where, and by whom the vessel was constructed. Only vessels constructed in the United States may be documented as fishing craft or for use in coastal trade (see 46 U.S.C. 251 for exceptions). All vessel documents carry a service designation. This specifies the particular trade or business in which the vessel is engaged. For fishing vessels these are cod fishing, oystering, fishing (other than cod), and whale fishing. Vessels in a service other than fishing prior to fishing must obtain a document which specifies the trade as fishing. Each year a small number of vessels that have previously been fishing but changed to other work for a period of time are redocumented as fishing craft. These are termed "Redocumentations" by the Coast Guard and have been included in this report. These craft generally are from 5 to 25 years of age, but a few are older.

In the 10-years 1957-66, a total of 5,653 vessels having 242,536 gross tons obtained documents as fishing craft. This was an average of 565 vessels per year and 43 gross tons per vessel. Only 367 vessels were documented in 1962--the low year; 1966 was the high with 816. More vessels obtained documents as fishing craft in 1966 than in any year since 1949. In 1957, the average for vessels included in this report was 37 gross tons. The average declined slightly in the next 3 years but in 1961 rose to 40 tons per vessel and by 1966 reached 57, an increase of 55 percent or 20 gross tons per vessel in the 10 years covered by this report.

The Gulf coastal states (Florida West Coast, Alabama, Mississippi, Louisiana, and Texas) led all U.S. sections in both number of vessels and total gross tonnage. Gulf coastal ports documented 2,047 (36 percent of the number) with a total of 111,441 gross tons (46 percent

of the tonnage). The number documented reached a low in 1960 when only 87 entered the fishery. Thereafter, the trend was generally upward and reached 373 in 1966.

Conditions in shrimp industry strongly influence the number of vessels obtaining documents as fishing craft in the Gulf States. When prices and fishing are good, the number of craft entering the fishery increases; when catches and prices are low, new construction declines and few vessels are documented. For example, in 1957 prices were fairly good; however, fishing was poor, and many vessel owners feared that the fleet was over expanded and that species were overfished. The catch was the lowest in 8 years, but the Exvessel Price Index averaged 106.2 for the year. This condition discouraged new building, and the number of vessels documented in that year declined. Only 158 vessels obtained documents as fishing craft in 1957. In 1959 and 1960, prices dropped, but the catches were good in both years. The yearly Exvessel Price Index was 75.5 in 1959 and 80.5 in 1960, and, despite good catches, such low prices do not stimulate new building. The Gulf shrimp fishery declined abruptly in 1961, and despite an enormous increase in effort only 134 million pounds were landed--the lowest since 1939. Even with the greatly reduced landings, prices did not advance materially until late July and August, and by that time the spring peak of production was over and was obviously a failure. Only 100 vessels obtained documents as fishing craft in the Gulf States that year and 111 the following year, about half the 10-year average. By midyear 1962, prices began to recover and the Price Index for the year reached 116.5. For the next 4 years, prices remained favorable for the vessel operator and catches were moderately good. Although the industry was somewhat cautious at first, it built an increasing number of vessels. The newer vessels, many of which would also fish for shrimp in Caribbean and South American waters, were larger than the usual shrimper and had greater horsepower for the long trips, heavy seas, and strong currents in the Caribbean area. The efficiency of these new, large, and powerful vessels raised some serious questions. Much of the hold space in these newer craft is not being used, and operating costs are higher. Catches and prices must remain high if these costly units are to prove profitable. A severe decline in landings such as occurred in 1961 could test the profitability of these new vessels.

The number of vessels documented in the Pacific Coast States (California, Oregon, Washington, and Alaska) was 1,578 vessels totaling 51,193 gross tons. This region had 28 percent of the number and 21 percent of the tonnage of

all U.S. vessels documented as fishing craft in the 10 years. Most of the Pacific Coast vessels that were documented were 10 to 19 tons--a size group in which most salmon trollers and gill netters occur. The number of vessels in this size group documented each year remained fairly constant except in 1961 when only 49 obtained documents. The total number of all sizes of newly documented vessels did not deviate greatly from year to year except in 1962 and 1966. In 1962, the number declined to 129--29 less than the average for the 10 years. Despite this decline, the number of newly documented craft in the 10- to 19-ton group was about average. The year was also significant because a decline was apparent in the 5- to 9-ton group and in the large tuna vessels. Shipyards were busy converting tuna clippers to purse seiners in 1962, and this activity undoubtedly curtailed new construction. Furthermore, vessel owners were obviously waiting to see if the newly converted seiners were efficient before they built more new large vessels. Conversion was largely completed by 1965, the efficiency of the purse seine unit was proven, and new tuna seiners of 200 to 800 tons were being built. Development of tuna purse seining and a favorable market for tuna obviously contributed to increased building of larger vessels.

In the South Atlantic States (North Carolina, South Carolina, Georgia, and Florida, East Coast), where vessel construction is governed largely by conditions in the shrimp industry, the number of documentations declined steadily, beginning with 123 in 1957 and ending with 77 in both 1965 and 1966. However, the trend was to larger vessels with greater horsepower--much the same pattern as in the Gulf Coast States. Several unprofitable years in the South Atlantic shrimp fishery forced many vessel operators to shift to the Gulf or Caribbean area. The declining catches in the South Atlantic States caused a sharp curtailment in new construction. Undoubtedly some of the craft documented in this area were constructed to fish Caribbean waters.

The Chesapeake Bay States (Maryland and Virginia), where most of the vessels are used for crabbing, oystering, or netting finfish, had little gain in number of new documentations throughout the 10 years. Seven hundred and sixty-four vessels obtained documents as fishing craft, or an average of 76 per year. The average gross tonnage fluctuated considerably but registered an overall gain from 11 tons per vessel in 1957 to 19 tons in 1966. The increase in tonnage was caused by the number of menhaden vessels constructed and documented in the area though many of these craft were

destined to fish elsewhere. Even with the menhaden vessels included, the size of the craft documented in the Chesapeake Bay States was on the average smaller than those in many other major fishing areas.

In the New England States (Maine, New Hampshire, Massachusetts, Rhode Island, and Connecticut), 277 vessels totaling 13,877 tons were documented as fishing craft during the 10 years. The average size of the vessel increased considerably during 1965 and 1966, principally as a result of Public Law 88-516 as amended, commonly known as the Vessel Subsidy Act. Most of these craft were in the large to medium class and were either draggers or scallopers. In addition, two large trawlers built for France in 1947 were purchased by a Boston firm and returned to the United States. These vessels obtained first documents as fishing craft and added substantially to the total tonnage for this section. General economic conditions in the New England groundfish industry and a lack of technological progress discouraged greater expansion of the fleet.

In the Middle Atlantic States (New York, New Jersey, Pennsylvania, and Delaware), only 147 vessels totaling 10,566 gross tons obtained documents as fishing craft. Several of these were tuna seiners constructed on the Pacific Coast, destined to fish in the Pacific Ocean and land in Puerto Rico, but were documented in Delaware because the corporations owning the vessels are domiciled in that State. A declining menhaden fishery and a static food fish industry plus a severe mortality in the oyster industry combined to discourage expansion of the Middle Atlantic fleet.

In the Great Lakes, Hawaii, and other areas, only a nominal number of documents were issued. Puerto Rico added several large seiners to its expanding tuna fisheries. Few documents were issued in the Great Lakes and Hawaii

which have no large fishing fleets and experienced no large expansion of the fisheries.

The increase in overall length of vessels was not as spectacular as the gain in tonnage. Vessels obtaining documents as fishing craft in 1957 averaged 46 feet. The average increased to 50 feet in 1965 and remained unchanged in 1966. With the exception of Puerto Rico, where there were but 12 vessels, mostly large tuna seiners, the Middle Atlantic vessels had the greatest average length--59 feet, followed by the Gulf of Mexico with 53 feet and South Atlantic 51 feet. Pacific Coast vessels averaged only 40 feet, principally the result of the predominance of the salmon troll and gill net fleets. The greatest gain in average length was registered in New England where in 1957 the average length was only 43 feet and in 1965 and 1966 reached 60 feet, a gain of 17 feet (40 percent). The documentation of the smaller craft in New England represented mostly lobster vessels and small draggers.

Average gross tons U.S. fishing fleet

<u>Year</u>	<u>Total gross tons</u>	<u>Number of vessels</u>	<u>Average gross tons</u>
1960	402,212	12,018	33
1961	400,935	11,964	34
1962	395,164	11,511	34
1963	408,778	11,928	34
1964	415,338	11,808	35
1965	431,308	12,311	35

Documentation of vessels as fishing craft from 1957 to 1966 indicated a remarkable growth in tonnage. Meanwhile the active U.S. fishing fleet from 1960 through 1965 had a net gain of only 2 gross tons per vessel--the average being 33 gross tons in 1960 and 35 in 1965. Data on the total number of vessels fishing in 1966 are not available at the time of publication.

MEASUREMENT OF TONNAGE LENGTH

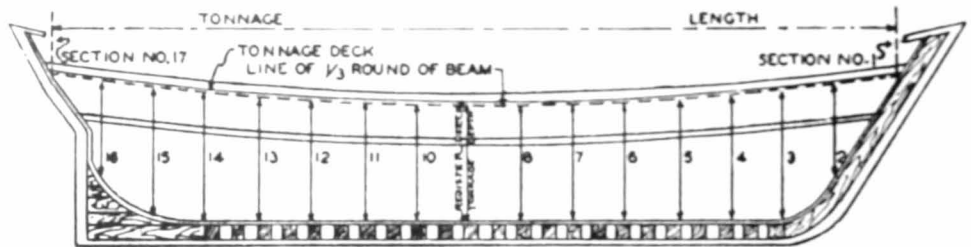
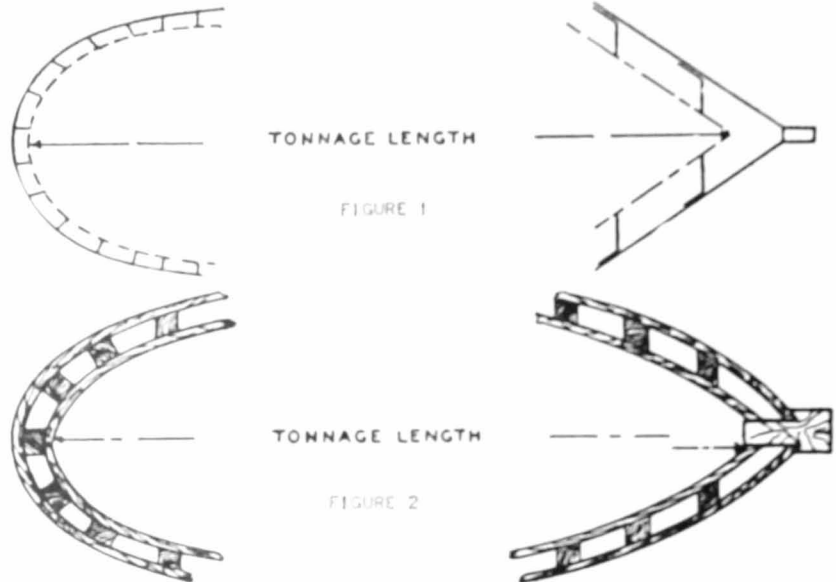


FIGURE 3

Tonnage length. The length of the vessel as shown on the document is the length in feet and tenths of feet as determined by measuring on the deck, from the fore part of the outer planking (where it is rabbeted) on the side of the stem of wooden vessels, or fore end of lap of outer plating of steel or iron vessels, to the after side of the main sternpost.

Tables on length appearing in this publication are shown in feet. Fractional parts of feet (tenths) have been dropped to facilitate handling the data.

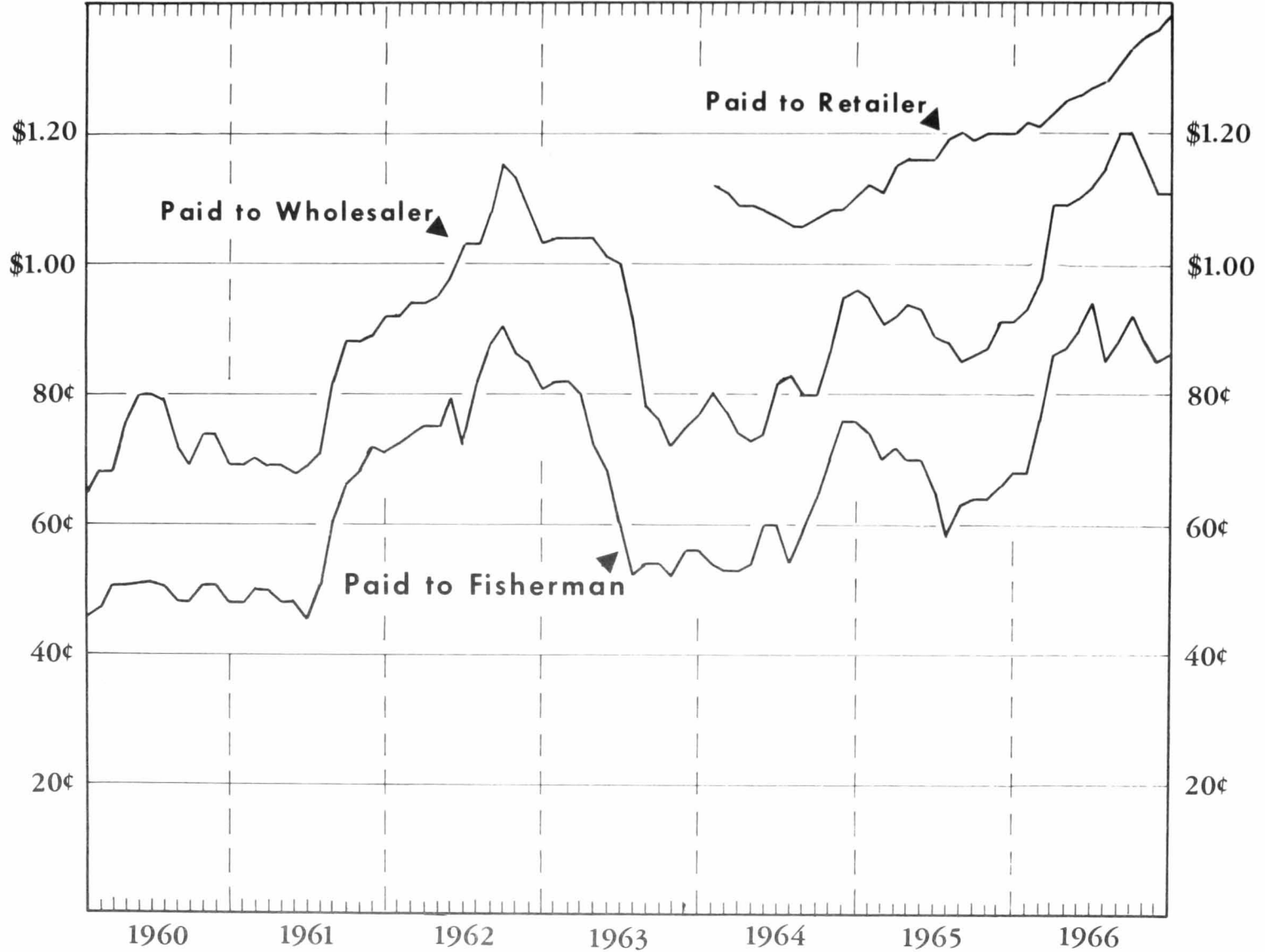
Figures 1, 2, and 3, are taken from the publication "Measurement of Vessels", through the courtesy of the Department of Treasury, Bureau of Customs, Washington, D.C.

PRICE PAID FOR SHRIMP



Price per pound

Price per pound



VESSELS DOCUMENTED AS FISHING CRAFT, 1957-66

SUMMARY BY YEAR BUILT

Year built	1957	1958	1959	1960	1961	1962	1963	1964	1965	1966
	Number	Number	Number	Number	Number	Number	Number	Number	Number	Number
.894.	-	-	1	-	-	-	-	-	-	-
.896.	-	-	-	-	-	-	-	-	-	1
.898.	-	-	1	1	-	-	-	-	1	-
.899.	-	-	-	1	-	-	-	-	-	-
.903.	-	-	-	-	1	-	-	-	-	-
.904.	1	-	-	-	-	-	-	-	-	-
.905.	-	-	1	-	-	-	-	-	-	-
.906.	-	-	-	-	-	-	-	-	-	1
.907.	-	-	-	1	-	-	-	-	-	-
.908.	-	-	-	-	-	-	-	-	-	1
.909.	1	-	1	1	-	-	-	-	-	-
1911.	-	-	-	-	-	1	1	-	1	-
1912.	-	1	-	-	-	-	-	-	-	1
1913.	-	1	-	2	-	-	1	-	-	-
1914.	-	1	1	-	-	-	1	-	-	1
1915.	-	2	1	3	-	-	2	-	-	-
1916.	-	1	-	1	-	-	-	-	1	-
1917.	1	3	1	1	1	1	-	-	1	-
1918.	3	4	1	2	2	-	1	1	2	1
1919.	-	-	2	-	-	-	-	-	2	2
1920.	1	2	3	1	3	-	-	-	1	2
1921.	-	1	1	-	-	-	1	1	1	-
1922.	2	1	-	-	-	-	1	-	-	1
1923.	-	1	-	-	-	-	1	-	1	1
1924.	2	-	3	-	1	1	3	2	-	5
1925.	-	2	2	3	-	-	2	2	-	1
1926.	-	2	1	3	6	1	4	-	2	1
1927.	1	3	3	3	-	1	-	2	4	1
1928.	1	2	3	2	1	4	4	-	3	2
1929.	4	1	1	6	-	-	1	-	3	2
1930.	-	6	2	1	2	2	2	-	1	2
1931.	2	-	1	3	2	2	3	1	2	-
1932.	-	1	-	7	-	-	2	3	1	2
1933.	-	1	3	1	2	-	3	-	4	2
1934.	-	1	3	3	2	1	1	1	2	1
1935.	2	4	1	3	1	2	7	1	1	3
1936.	3	2	3	4	3	4	2	1	6	6
1937.	5	5	2	3	4	-	2	2	5	5
1938.	5	3	1	3	4	1	1	-	7	3
1939.	2	8	2	6	3	1	6	2	5	5
1940.	1	6	4	5	2	1	-	1	6	5
1941.	3	3	5	4	5	2	8	-	3	5
1942.	13	10	9	6	11	8	13	3	11	7
1943.	21	8	13	17	9	8	14	8	10	14
1944.	13	17	22	16	15	6	14	7	13	3
1945.	14	17	13	18	13	11	5	9	8	8
1946.	4	6	7	6	3	3	6	2	12	4
1947.	4	5	3	7	6	3	2	4	12	12
1948.	4	5	2	5	5	-	9	1	10	3
1949.	-	6	1	5	1	1	3	1	1	5
1950.	1	5	2	2	-	2	2	1	3	1
1951.	2	-	1	1	-	2	2	-	4	2

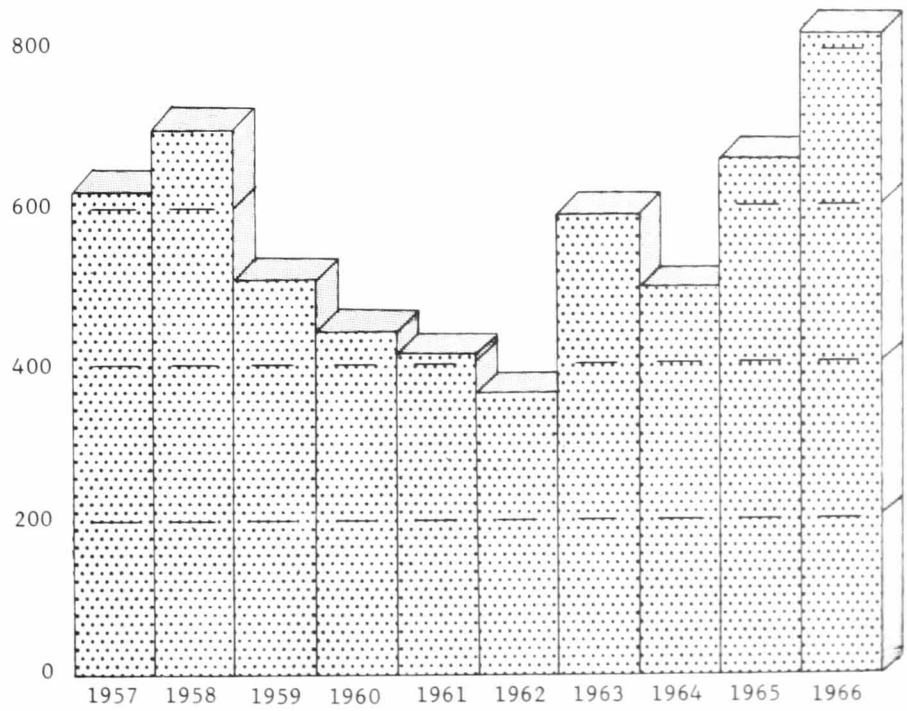
(Continued on next page)

VESSELS DOCUMENTED AS FISHING CRAFT, 1957-66

SUMMARY BY YEAR BUILT - Continued

Year built	1957	1958	1959	1960	1961	1962	1963	1964	1965	1966
	<u>Number</u>	<u>Number</u>	<u>Number</u>	<u>Number</u>	<u>Number</u>	<u>Number</u>	<u>Number</u>	<u>Number</u>	<u>Number</u>	<u>Number</u>
1952.	6	-	3	-	1	1	1	2	3	5
1953.	1	1	4	7	3	2	2	2	-	1
1954.	2	2	2	2	2	-	2	2	4	4
1955.	5	2	5	4	1	3	2	3	1	3
1956.	52	3	3	5	4	2	3	2	5	4
1957.	425	76	9	3	3	1	2	4	3	4
1958.	-	470	47	10	2	-	4	3	3	1
1959.	-	-	296	41	9	2	5	2	3	7
1960.	-	-	-	205	40	8	8	3	4	6
1961.	-	-	-	-	247	31	7	2	3	5
1962.	-	-	-	-	-	239	31	7	5	6
1963.	-	-	-	-	-	-	383	40	8	9
1964.	-	-	-	-	-	-	-	369	33	5
1965.	-	-	-	-	-	-	-	-	428	68
1966.	-	-	-	-	-	-	-	-	-	551
Unknown	12	12	11	15	7	9	9	6	10	15
Total.	619	713	507	449	427	367	589	503	663	816

VESSELS DOCUMENTED AS FISHING CRAFT, 1957-66



VESSELS DOCUMENTED AS FISHING CRAFT, 1957-66

SUMMARY OF TONNAGE DISTRIBUTION

Gross tonnage	1957	1958	1959	1960	1961
	<u>Number</u>	<u>Number</u>	<u>Number</u>	<u>Number</u>	<u>Number</u>
5 - 9	139	147	133	149	133
10 - 19	161	174	162	155	131
20 - 29	44	36	44	47	37
30 - 39	51	70	48	23	26
40 - 49	79	67	37	20	18
50 - 59	35	71	21	13	21
60 - 69	74	111	34	16	22
70 - 79	12	21	12	2	17
80 - 89	2	1	3	4	2
90 - 99	1	2	1	2	2
100 - 109	3	-	-	-	-
110 - 119	1	1	2	1	1
130 - 139	1	3	-	-	1
140 - 149	1	-	1	-	-
160 - 169	1	1	-	-	-
170 - 179	1	-	-	-	-
180 - 189	-	-	-	1	1
190 - 199	4	1	2	2	1
200 - 209	-	-	1	-	-
230 - 239	-	-	-	2	2
240 - 249	-	1	-	-	-
250 - 259	3	-	1	-	1
260 - 269	1	1	1	-	-
290 - 299	-	1	-	2	1
330 - 339	-	-	-	1	-
340 - 349	-	-	-	1	-
360 - 369	-	-	-	1	2
370 - 379	2	3	2	-	-
410 - 419	-	-	1	-	-
420 - 429	-	-	-	1	-
460 - 469	-	-	-	1	-
470 - 479	-	-	-	5	-
480 - 489	-	-	-	-	1
530 - 539	-	-	1	-	-
540 - 549	-	-	-	-	1
560 - 569	-	-	-	-	1
570 - 579	-	-	-	-	1
580 - 589	-	-	-	-	1
600 - 609	1	-	-	-	-
610 - 619	1	-	-	-	-
640 - 649	-	1	-	-	-
680 - 689	1	-	-	-	-
770 - 779	-	-	-	-	1
810 - 819	-	-	-	-	2
Total vessels . . .	619	713	507	449	427
Total gross tonnage . . .	22,754	25,815	15,164	14,401	17,035
Average . . .	37	36	30	32	40

Gross tonnage	1962	1963	1964	1965	1966	Total
	<u>Number</u>	<u>Number</u>	<u>Number</u>	<u>Number</u>	<u>Number</u>	<u>Number</u>
5 - 9	62	123	73	133	162	1,254
10 - 19	137	178	143	188	219	1,648
20 - 29	33	61	45	55	55	457

(Continued on next page)

VESSELS DOCUMENTED AS FISHING CRAFT, 1957-66

SUMMARY OF TONNAGE DISTRIBUTION - Continued

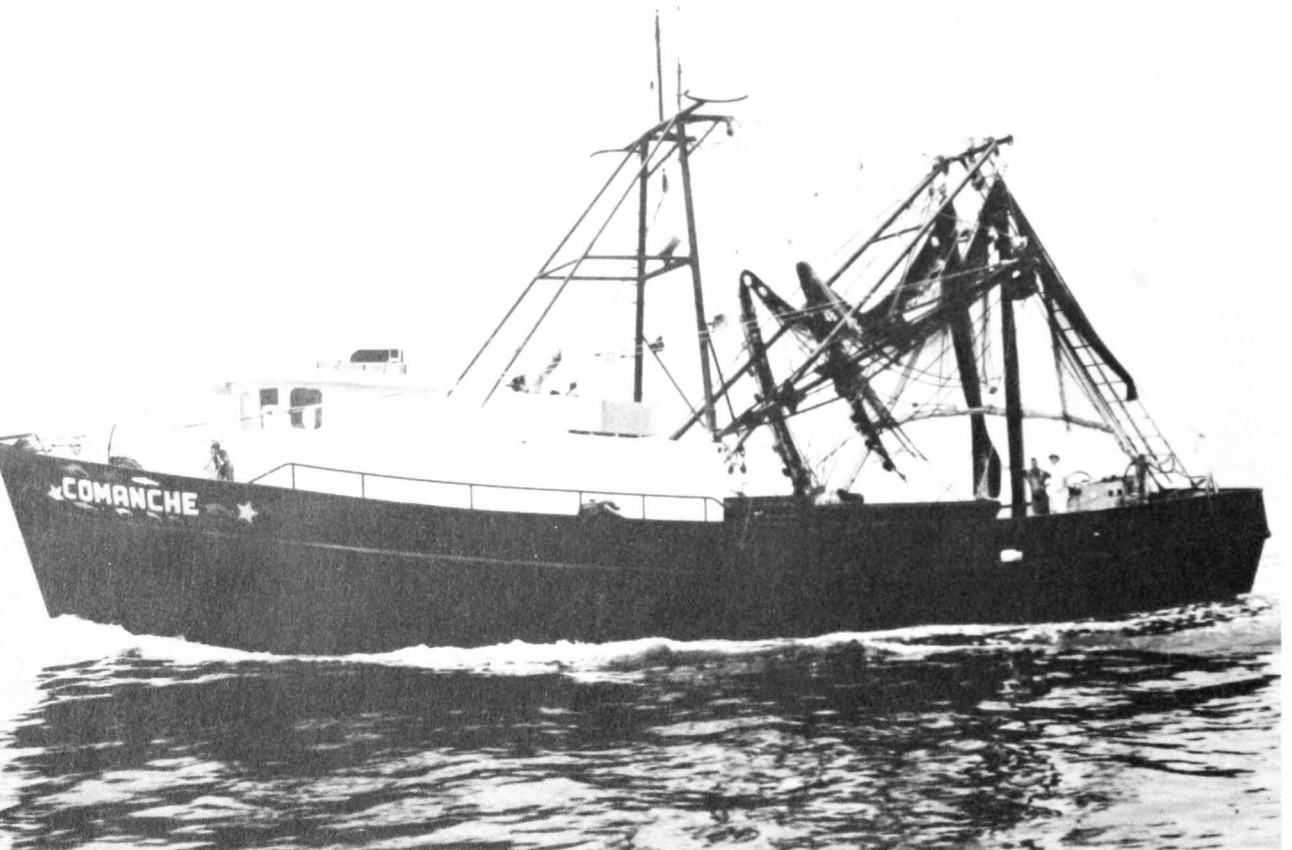
Gross tonnage	1962	1963	1964	1965	1966	Total
	<u>Number</u>	<u>Number</u>	<u>Number</u>	<u>Number</u>	<u>Number</u>	<u>Number</u>
30 - 39.	33	23	32	20	28	354
40 - 49.	15	35	23	34	34	362
50 - 59.	9	16	30	15	25	256
60 - 69.	17	33	34	27	39	407
70 - 79.	36	73	66	19	24	282
80 - 89.	3	12	25	26	40	118
90 - 99.	1	2	13	92	110	226
100 - 109.	1	3	3	9	13	32
110 - 119.	3	3	3	2	10	27
120 - 129.	1	-	-	2	11	14
130 - 139.	2	-	1	3	8	19
140 - 149.	-	9	-	1	5	17
150 - 159.	-	1	-	4	1	6
160 - 169.	-	2	1	3	3	11
170 - 179.	-	-	-	4	2	7
180 - 189.	-	-	1	1	1	5
190 - 199.	-	-	-	2	3	15
200 - 209.	-	-	-	-	-	1
210 - 219.	2	-	-	2	-	4
220 - 229.	1	1	1	-	-	3
230 - 239.	1	1	-	-	1	7
240 - 249.	-	1	-	-	-	2
250 - 259.	1	2	-	-	-	8
260 - 269.	1	1	-	1	2	8
270 - 279.	-	-	-	1	1	2
290 - 299.	-	2	-	-	1	7
300 - 309.	-	1	-	1	-	2
310 - 319.	-	1	1	1	-	3
320 - 329.	-	-	1	1	-	2
330 - 339.	-	-	-	1	-	2
340 - 349.	1	-	-	-	1	3
360 - 369.	-	-	1	2	1	7
370 - 379.	-	-	-	-	-	7
380 - 389.	-	-	-	-	2	2
410 - 419.	-	-	-	-	-	1
420 - 429.	-	-	-	1	-	2
430 - 439.	-	-	1	1	-	2
440 - 449.	-	-	-	-	2	2
450 - 459.	-	1	1	-	-	2
460 - 469.	-	-	-	-	-	1
470 - 479.	-	-	-	-	-	5
480 - 489.	2	-	-	-	-	3
490 - 499.	1	-	1	-	-	2
510 - 519.	-	-	-	2	-	2
520 - 529.	-	-	1	3	-	4
530 - 539.	-	1	-	-	2	4
540 - 549.	1	-	1	-	-	3
550 - 559.	1	-	-	1	-	2
560 - 569.	-	-	-	-	-	1
570 - 579.	-	-	-	1	-	2
580 - 589.	-	-	-	1	-	2
590 - 599.	-	-	-	2	-	2
600 - 609.	-	-	-	-	8	9
610 - 619.	-	-	-	-	-	1
640 - 649.	-	1	-	-	-	2
680 - 689.	-	-	-	-	-	1

(Continued on next page)

VESSELS DOCUMENTED AS FISHING CRAFT, 1957-66

SUMMARY OF TONNAGE DISTRIBUTION - Continued

Gross tonnage	1962	1963	1964	1965	1966	Total
	<u>Number</u>	<u>Number</u>	<u>Number</u>	<u>Number</u>	<u>Number</u>	<u>Number</u>
720 - 729. . . .	-	-	-	1	-	1
730 - 739. . . .	-	-	-	-	1	1
750 - 759. . . .	-	-	-	-	1	1
770 - 779. . . .	1	-	-	-	-	2
790 - 799. . . .	-	1	-	-	-	1
800 - 809. . . .	-	1	1	-	-	2
810 - 819. . . .	-	-	-	-	-	2
850 - 859. . . .	1	-	-	-	-	1
Total vessels . . .	367	589	503	663	816	5,653
Total gross tonnage . . .	16,267	25,020	23,412	36,474	46,194	242,536
Average . . .	44	42	47	55	57	43



Comanche: (114 gross tons, 77 net tons, 74.3 feet long, 380 horsepower). This vessel is typical of the new steel-hull vessels being constructed for shrimp fishing in the Gulf of Mexico and Caribbean waters. It has equipment for peeling, deveining, and freezing shrimp aboard the vessel. The crew's quarters are air-conditioned.

VESSELS DOCUMENTED AS FISHING CRAFT, 1957-66

SUMMARY OF LENGTH DISTRIBUTION

Length	1957	1958	1959	1960	1961
<u>Feet</u>	<u>Number</u>	<u>Number</u>	<u>Number</u>	<u>Number</u>	<u>Number</u>
20 - 29	28	37	36	57	67
30 - 39	254	250	240	243	183
40 - 49	113	136	107	67	85
50 - 59	121	171	69	40	28
60 - 69	78	103	43	21	42
70 - 79	7	3	2	2	5
80 - 89	3	3	-	1	2
90 - 99	-	1	1	2	-
100 - 109	5	2	1	1	1
110 - 119	2	3	2	4	-
120 - 129	4	1	2	-	4
130 - 139	1	1	2	-	1
140 - 149	-	1	1	2	1
150 - 159	1	-	-	9	2
160 - 169	-	-	-	-	4
170 - 179	-	-	1	-	2
190 - 199	2	1	-	-	-
Total vessels	619	713	507	449	427
Total length.	28,719	33,108	21,923	19,082	18,956
Average	46	46	43	42	44

Length	1962	1963	1964	1965	1966
<u>Feet</u>	<u>Number</u>	<u>Number</u>	<u>Number</u>	<u>Number</u>	<u>Number</u>
20 - 29	32	56	49	70	102
30 - 39	155	231	163	243	266
40 - 49	78	104	94	91	99
50 - 59	24	43	34	46	65
60 - 69	56	120	144	163	202
70 - 79	5	14	6	8	43
80 - 89	-	4	2	9	13
90 - 99	-	1	-	9	1
100 - 109	5	1	1	2	4
110 - 119	1	1	1	4	1
120 - 129	1	5	1	2	4
130 - 139	1	2	2	4	4
140 - 149	-	2	1	-	1
150 - 159	3	1	3	2	-
160 - 169	4	1	2	8	10
170 - 179	-	3	-	-	1
180 - 189	1	-	-	-	-
190 - 199	1	-	-	-	-
200 - 209	-	-	-	2	-
Total vessels	367	589	503	663	816
Total length.	17,431	27,828	24,408	33,182	40,847
Average	47	47	48	50	50

VESSELS DOCUMENTED AS FISHING CRAFT, 1957-66

SUMMARY OF HORSEPOWER DISTRIBUTION

Horsepower	1957	1958	1959	1960	1961
	<u>Number</u>	<u>Number</u>	<u>Number</u>	<u>Number</u>	<u>Number</u>
Under 50. . .	11	9	14	15	14
50 - 99 . .	77	82	66	72	53
100 - 149 .	176	206	138	135	100
150 - 199 .	232	285	181	133	125
200 - 249 .	69	82	68	37	66
250 - 299 .	16	13	12	17	21
300 - 349 .	16	20	12	15	20
350 - 399 .	-	2	2	1	2
400 - 449 .	2	-	2	3	2
450 - 499 .	5	4	2	4	4
500 - 599 .	1	2	2	1	4
600 - 699 .	-	1	-	4	6
700 - 799 .	1	-	-	-	-
800 - 899 .	-	-	2	1	-
900 - 999 .	3	3	3	6	-
1000 - 1099 .	4	1	2	1	6
1100 - 1199 .	2	-	-	-	-
1200 - 1299 .	3	2	1	1	-
1300 - 1399 .	-	-	-	-	1
1500 - Over .	1	1	-	3	3
Total vessels. .	619	713	507	449	427
Total horsepower	107,958	118,219	85,210	82,277	85,643
Average. .	174	166	168	183	201

Horsepower	1962	1963	1964	1965	1966	Total
	<u>Number</u>	<u>Number</u>	<u>Number</u>	<u>Number</u>	<u>Number</u>	<u>Number</u>
Under 50. . .	4	17	10	7	22	123
50 - 99 . .	39	57	32	67	61	606
100 - 149 .	84	146	104	133	128	1,350
150 - 199 .	115	140	127	137	134	1,609
200 - 249 .	75	120	100	96	118	831
250 - 299 .	12	22	18	29	48	208
300 - 349 .	10	42	83	117	167	502
350 - 399 .	6	12	7	13	74	119
400 - 449 .	2	5	1	13	15	45
450 - 499 .	2	7	6	12	8	54
500 - 599 .	4	3	3	12	9	41
600 - 699 .	-	1	2	8	5	27
700 - 799 .	3	4	1	2	9	20
800 - 899 .	1	1	1	3	-	9
900 - 999 .	2	1	2	-	-	20
1000 - 1099 .	5	6	2	3	3	33
1100 - 1199 .	-	1	-	-	-	3
1200 - 1299 .	-	1	-	-	-	8
1300 - 1399 .	-	1	1	1	1	5
1400 - 1499 .	1	-	-	1	2	4
1500 - Over .	2	2	3	9	12	36
Total vessels. .	367	589	503	663	816	5,653
Total horsepower	75,652	120,864	109,478	160,450	215,105	1,160,856
Average. .	206	205	218	242	264	205

VESSELS DOCUMENTED AS FISHING CRAFT, 1957

TONNAGE DISTRIBUTION

Gross tonnage	New England	Middle Atlantic	Chesapeake	South Atlantic	Gulf
	<u>Number</u>	<u>Number</u>	<u>Number</u>	<u>Number</u>	<u>Number</u>
5 - 9.	2	2	87	6	13
10 - 19.	11	5	13	14	21
20 - 29.	2	-	2	13	11
30 - 39.	1	2	-	20	24
40 - 49.	1	2	1	43	23
50 - 59.	-	1	-	3	28
60 - 69.	1	6	-	16	51
70 - 79.	-	3	-	3	6
80 - 89.	1	-	-	-	1
90 - 99.	-	-	-	1	-
100 - 109.	-	-	-	1	1
110 - 119.	1	-	-	-	-
130 - 139.	-	-	-	-	1
170 - 179.	-	-	-	-	1
190 - 199.	-	-	-	2	2
250 - 259.	-	-	1	1	1
370 - 379.	-	1	-	-	-
600 - 609.	-	-	-	-	1
610 - 619.	-	1	-	-	-
Total vessels	20	23	104	123	185
Total gross tonnage	542	1,910	1,109	5,412	9,488
Average	27	83	11	44	51

Gross tonnage	Pacific	Great Lakes	Hawaii	Other	Total
	<u>Number</u>	<u>Number</u>	<u>Number</u>	<u>Number</u>	<u>Number</u>
5 - 9.	28	-	1	-	139
10 - 19.	92	4	-	1	161
20 - 29.	15	1	-	-	44
30 - 39.	4	-	-	-	51
40 - 49.	9	-	-	-	79
50 - 59.	2	1	-	-	35
60 - 69.	-	-	-	-	74
70 - 79.	-	-	-	-	12
80 - 89.	-	-	-	-	2
90 - 99.	-	-	-	-	1
100 - 109.	1	-	-	-	3
110 - 119.	-	-	-	-	1
130 - 139.	-	-	-	-	1
140 - 149.	1	-	-	-	1
160 - 169.	1	-	-	-	1
170 - 179.	-	-	-	-	1
190 - 199.	-	-	-	-	4
250 - 259.	-	-	-	-	3
260 - 269.	1	-	-	-	1
370 - 379.	1	-	-	-	2
600 - 609.	-	-	-	-	1
610 - 619.	-	-	-	-	1
680 - 689.	1	-	-	-	1
Total vessels	156	6	1	1	619
Total gross tonnage	4,135	134	8	16	22,754
Average	26	22	8	16	37

VESSELS DOCUMENTED AS FISHING CRAFT, 1958

TONNAGE DISTRIBUTION

Gross tonnage	New England	Middle Atlantic	Chesapeake	South Atlantic	Gulf
	<u>Number</u>	<u>Number</u>	<u>Number</u>	<u>Number</u>	<u>Number</u>
5 - 9.	2	-	83	4	12
10 - 19.	5	6	12	17	42
20 - 29.	2	2	1	8	8
30 - 39.	-	-	-	22	39
40 - 49.	1	-	-	39	25
50 - 59.	-	-	-	16	49
60 - 69.	-	-	-	22	89
70 - 79.	1	-	-	4	16
80 - 89.	-	-	-	1	-
90 - 99.	-	-	-	1	-
110 - 119.	1	-	-	-	-
130 - 139.	2	-	-	-	-
160 - 169.	-	1	-	-	-
190 - 199.	-	1	-	-	-
240 - 249.	-	-	1	-	-
290 - 299.	-	-	-	-	1
640 - 649.	-	1	-	-	-
Total vessels	14	11	97	134	282
Total gross tonnage	617	1,123	1,018	5,690	13,161
Average	44	102	10	42	47

Gross tonnage	Pacific	Great Lakes	Hawaii	Other	Total
	<u>Number</u>	<u>Number</u>	<u>Number</u>	<u>Number</u>	<u>Number</u>
5 - 9.	44	1	-	1	147
10 - 19.	87	5	-	-	174
20 - 29.	14	1	-	-	36
30 - 39.	7	2	-	-	70
40 - 49.	2	-	-	-	67
50 - 59.	4	1	1	-	71
60 - 69.	-	-	-	-	111
70 - 79.	-	-	-	-	21
80 - 89.	-	-	-	-	1
90 - 99.	-	-	-	-	2
110 - 119.	-	-	-	-	1
130 - 139.	1	-	-	-	3
160 - 169.	-	-	-	-	1
190 - 199.	-	-	-	-	1
240 - 249.	-	-	-	-	1
260 - 269.	1	-	-	-	1
290 - 299.	-	-	-	-	1
370 - 379.	3	-	-	-	3
640 - 649.	-	-	-	-	1
Total vessels	163	10	1	1	713
Total gross tonnage	3,922	224	54	6	25,815
Average	24	22	54	6	36

VESSELS DOCUMENTED AS FISHING CRAFT, 1959

TONNAGE DISTRIBUTION

Gross tonnage	New England	Middle Atlantic	Chesapeake	South Atlantic	Gulf
	<u>Number</u>	<u>Number</u>	<u>Number</u>	<u>Number</u>	<u>Number</u>
5 - 9.	3	4	81	2	14
10 - 19.	4	4	15	14	33
20 - 29.	1	2	3	14	11
30 - 39.	1	-	1	19	18
40 - 49.	-	-	-	11	20
50 - 59.	1	-	-	8	12
60 - 69.	2	-	-	7	25
70 - 79.	-	1	-	2	9
80 - 89.	-	-	-	-	3
90 - 99.	1	-	-	-	-
110 - 119.	2	-	-	-	-
190 - 199.	-	-	1	-	-
200 - 209.	-	-	1	-	-
250 - 259.	-	-	1	-	-
260 - 269.	-	-	1	-	-
370 - 379.	-	1	-	-	-
410 - 419.	-	-	-	-	1
Total vessels	15	12	104	77	146
Total gross tonnage	637	583	1,780	2,709	5,905
Average	42	48	17	35	40

Gross tonnage	Pacific	Great Lakes	Hawaii	Other	Total
	<u>Number</u>	<u>Number</u>	<u>Number</u>	<u>Number</u>	<u>Number</u>
5 - 9.	27	2	-	-	133
10 - 19.	88	3	1	-	162
20 - 29.	12	1	-	-	44
30 - 39.	9	-	-	-	48
40 - 49.	5	1	-	-	37
50 - 59.	-	-	-	-	21
60 - 69.	-	-	-	-	34
70 - 79.	-	-	-	-	12
80 - 89.	-	-	-	-	3
90 - 99.	-	-	-	-	1
110 - 119.	-	-	-	-	2
140 - 149.	1	-	-	-	1
190 - 199.	1	-	-	-	2
200 - 209.	-	-	-	-	1
250 - 259.	-	-	-	-	1
260 - 269.	-	-	-	-	1
370 - 379.	1	-	-	-	2
410 - 419.	-	-	-	-	1
530 - 539.	1	-	-	-	1
Total vessels	145	7	1	-	507
Total gross tonnage	3,410	127	13	-	15,164
Average	24	18	13	-	30

VESSELS DOCUMENTED AS FISHING CRAFT, 1960

TONNAGE DISTRIBUTION

Gross tonnage	New England	Middle Atlantic	Chesapeake	South Atlantic	Gulf
	<u>Number</u>	<u>Number</u>	<u>Number</u>	<u>Number</u>	<u>Number</u>
5 - 9	16	2	64	10	8
10 - 19	11	7	14	10	27
20 - 29	3	2	2	10	8
30 - 39	-	-	-	4	8
40 - 49	-	4	-	4	9
50 - 59	-	1	1	2	8
60 - 69	2	1	-	4	9
70 - 79	-	-	-	1	1
80 - 89	-	1	-	1	1
90 - 99	2	-	-	-	-
110 - 119	-	-	1	-	-
180 - 189	1	-	-	-	-
190 - 199	-	-	-	1	-
230 - 239	-	-	-	-	2
420 - 429	-	-	-	1	-
460 - 469	-	-	-	-	1
470 - 479	-	-	-	-	5
Total vessels	35	18	82	48	87
Total gross tonnage . . .	832	539	827	1,933	5,754
Average	24	30	10	40	66

Gross tonnage	Pacific	Great Lakes	Hawaii	Other	Total
	<u>Number</u>	<u>Number</u>	<u>Number</u>	<u>Number</u>	<u>Number</u>
5 - 9	45	4	-	-	149
10 - 19	77	9	-	-	155
20 - 29	18	4	-	-	47
30 - 39	10	1	-	-	23
40 - 49	3	-	-	-	20
50 - 59	1	-	-	-	13
60 - 69	-	-	-	-	16
70 - 79	-	-	-	-	2
80 - 89	1	-	-	-	4
90 - 99	-	-	-	-	2
110 - 119	-	-	-	-	1
180 - 189	-	-	-	-	1
190 - 199	1	-	-	-	2
230 - 239	-	-	-	-	2
290 - 299	2	-	-	-	2
330 - 339	1	-	-	-	1
340 - 349	1	-	-	-	1
360 - 369	1	-	-	-	1
420 - 429	-	-	-	-	1
460 - 469	-	-	-	-	1
470 - 479	-	-	-	-	5
Total vessels	161	18	-	-	449
Total gross tonnage . . .	4,233	283	-	-	14,401
Average	26	16	-	-	32

VESSELS DOCUMENTED AS FISHING CRAFT, 1961

TONNAGE DISTRIBUTION

Gross tonnage	New England	Middle Atlantic	Chesapeake	South Atlantic	Gulf
	<u>Number</u>	<u>Number</u>	<u>Number</u>	<u>Number</u>	<u>Number</u>
5 - 9.	10	3	57	6	9
10 - 19.	12	3	16	9	33
20 - 29.	1	1	2	6	15
30 - 39.	1	-	-	7	8
40 - 49.	1	-	-	5	2
50 - 59.	-	-	-	2	13
60 - 69.	3	1	-	5	12
70 - 79.	1	-	-	7	7
80 - 89.	-	1	-	-	1
90 - 99.	2	-	-	-	-
110 - 119.	1	-	-	-	-
230 - 239.	-	1	-	-	-
250 - 259.	-	1	-	-	-
580 - 589.	-	1	-	-	-
Total vessels	32	12	75	47	100
Total gross tonnage . . .	892	1,315	649	1,757	3,350
Average . . .	28	110	9	37	34

Gross tonnage	Pacific	Great Lakes	Hawaii	Other	Total
	<u>Number</u>	<u>Number</u>	<u>Number</u>	<u>Number</u>	<u>Number</u>
5 - 9.	44	3	-	1	133
10 - 19.	49	8	-	1	131
20 - 29.	11	1	-	-	37
30 - 39.	10	-	-	-	26
40 - 49.	10	-	-	-	18
50 - 59.	6	-	-	-	21
60 - 69.	1	-	-	-	22
70 - 79.	2	-	-	-	17
80 - 89.	-	-	-	-	2
90 - 99.	-	-	-	-	2
110 - 119.	-	-	-	-	1
130 - 139.	1	-	-	-	1
180 - 189.	1	-	-	-	1
190 - 199.	1	-	-	-	1
230 - 239.	1	-	-	-	2
250 - 259.	-	-	-	-	1
290 - 299.	1	-	-	-	1
360 - 369.	2	-	-	-	2
480 - 489.	1	-	-	-	1
540 - 549.	1	-	-	-	1
560 - 569.	1	-	-	-	1
570 - 579.	1	-	-	-	1
580 - 589.	-	-	-	-	1
770 - 779.	1	-	-	-	1
810 - 819.	2	-	-	-	2
Total vessels	147	12	-	2	427
Total gross tonnage . . .	8,911	140	-	21	17,035
Average . . .	61	12	-	10	40

VESSELS DOCUMENTED AS FISHING CRAFT, 1962

TONNAGE DISTRIBUTION

Gross tonnage	New England	Middle Atlantic	Chesapeake	South Atlantic	Gulf
	<u>Number</u>	<u>Number</u>	<u>Number</u>	<u>Number</u>	<u>Number</u>
5 - 9	6	-	28	3	10
10 - 19	10	1	10	12	26
20 - 29	3	-	2	5	13
30 - 39	3	-	1	4	14
40 - 49	-	1	-	4	3
50 - 59	-	-	-	4	2
60 - 69	1	-	-	2	13
70 - 79	-	1	-	11	24
80 - 89	-	-	-	-	2
100 - 109	1	-	-	-	-
110 - 119	2	-	-	1	-
120 - 129	-	-	1	-	-
130 - 139	-	1	-	-	-
210 - 219	-	-	-	1	1
250 - 259	-	1	-	-	-
260 - 269	-	-	-	-	1
480 - 489	-	-	-	-	2
490 - 499	1	-	-	-	-
540 - 549	-	-	1	-	-
Total vessels	27	5	43	47	111
Total gross tonnage . . .	1,226	520	1,066	2,092	5,763
Average . . .	45	104	25	44	52

Gross tonnage	Pacific	Great Lakes	Hawaii	Other	Total
	<u>Number</u>	<u>Number</u>	<u>Number</u>	<u>Number</u>	<u>Number</u>
5 - 9	15	-	-	-	62
10 - 19	76	2	-	-	137
20 - 29	10	-	-	-	33
30 - 39	11	-	-	-	33
40 - 49	7	-	-	-	15
50 - 59	3	-	-	-	9
60 - 69	1	-	-	-	17
70 - 79	-	-	-	-	36
80 - 89	1	-	-	-	3
90 - 99	1	-	-	-	1
100 - 109	-	-	-	-	1
110 - 119	-	-	-	-	3
120 - 129	-	-	-	-	1
130 - 139	1	-	-	-	2
210 - 219	-	-	-	-	2
220 - 229	1	-	-	-	1
230 - 239	-	1	-	-	1
250 - 259	-	-	-	-	1
260 - 269	-	-	-	-	1
340 - 349	1	-	-	-	1
480 - 489	-	-	-	-	2
490 - 499	-	-	-	-	1
540 - 549	-	-	-	-	1
550 - 559	1	-	-	-	1
770 - 779	-	-	-	1	1
850 - 859	-	-	-	1	1
Total vessels	129	3	-	2	367
Total gross tonnage . . .	3,699	272	-	1,629	16,267
Average . . .	29	91	-	81	44

TONNAGE DISTRIBUTION

Gross tonnage	New England	Middle Atlantic	Chesapeake	South Atlantic	Gulf
	<u>Number</u>	<u>Number</u>	<u>Number</u>	<u>Number</u>	<u>Number</u>
5 - 9	4	5	47	4	41
10 - 19	8	4	13	10	62
20 - 29	1	1	3	7	19
30 - 39	-	1	-	3	10
40 - 49	1	1	-	14	9
50 - 59	1	-	-	4	6
60 - 69	-	-	-	3	30
70 - 79	1	4	-	27	40
80 - 89	1	-	-	-	11
90 - 99	-	-	-	-	2
100 - 109	-	-	-	-	2
110 - 119	2	-	1	-	-
140 - 149	-	-	-	-	9
150 - 159	1	-	-	-	-
160 - 169	1	-	-	-	-
250 - 259	-	-	2	-	-
260 - 269	-	1	-	-	-
290 - 299	1	-	-	-	-
300 - 309	-	-	-	-	1
310 - 319	-	1	-	-	-
450 - 459	1	-	-	-	-
530 - 539	-	-	1	-	-
640 - 649	-	-	-	-	1
Total vessels	23	18	67	72	243
Total gross tonnage . . .	1,713	1,076	1,710	3,454	11,196
Average	74	60	26	48	46
Gross tonnage	Pacific	Great Lakes	Hawaii	Other	Total
	<u>Number</u>	<u>Number</u>	<u>Number</u>	<u>Number</u>	<u>Number</u>
5 - 9	21	1	-	-	123
10 - 19	80	1	-	-	178
20 - 29	29	1	-	-	61
30 - 39	9	-	-	-	23
40 - 49	9	1	-	-	35
50 - 59	5	-	-	-	16
60 - 69	-	-	-	-	33
70 - 79	1	-	-	-	73
80 - 89	-	-	-	-	12
90 - 99	-	-	-	-	2
100 - 109	1	-	-	-	3
110 - 119	-	-	-	-	3
140 - 149	-	-	-	-	9
150 - 159	-	-	-	-	1
160 - 169	1	-	-	-	2
220 - 229	1	-	-	-	1
230 - 239	-	1	-	-	1
240 - 249	1	-	-	-	1
250 - 259	-	-	-	-	2
260 - 269	-	-	-	-	1
290 - 299	1	-	-	-	2
300 - 309	-	-	-	-	1
310 - 319	-	-	-	-	1
450 - 459	-	-	-	-	1
530 - 539	-	-	-	-	1
640 - 649	-	-	-	-	1
790 - 799	-	-	-	1	1
800 - 809	-	-	-	1	1
Total vessels	159	5	-	2	589
Total gross tonnage . . .	3,948	326	-	1,597	25,020
Average	25	65	-	799	42

VESSELS DOCUMENTED AS FISHING CRAFT, 1964

TONNAGE DISTRIBUTION

Gross tonnage	New England	Middle Atlantic	Chesapeake	South Atlantic	Gulf
	<u>Number</u>	<u>Number</u>	<u>Number</u>	<u>Number</u>	<u>Number</u>
5 - 9	12	-	30	3	12
10 - 19	9	3	6	3	59
20 - 29	1	1	2	2	15
30 - 39	2	-	-	5	7
40 - 49	-	-	-	4	7
50 - 59	1	2	-	4	14
60 - 69	-	1	-	3	29
70 - 79	1	1	-	15	49
80 - 89	-	-	-	4	21
90 - 99	2	-	-	7	3
100 - 109	1	-	-	-	2
110 - 119	2	1	-	-	-
130 - 139	1	-	-	-	-
180 - 189	1	-	-	-	-
220 - 229	-	-	-	-	1
310 - 319	-	-	-	-	1
320 - 329	-	-	-	-	1
450 - 459	-	-	1	-	-
520 - 529	-	1	-	-	-
540 - 549	-	1	-	-	-
Total vessels	33	11	39	50	221
Total gross tonnage . . .	1,255	1,513	783	3,003	11,301
Average . . .	38	138	20	60	51

Gross tonnage	Pacific	Great Lakes	Hawaii	Other	Total
	<u>Number</u>	<u>Number</u>	<u>Number</u>	<u>Number</u>	<u>Number</u>
5 - 9	16	-	-	-	73
10 - 19	58	3	2	-	143
20 - 29	24	-	-	-	45
30 - 39	17	1	-	-	32
40 - 49	11	-	-	1	23
50 - 59	9	-	-	-	30
60 - 69	1	-	-	-	34
70 - 79	-	-	-	-	66
80 - 89	-	-	-	-	25
90 - 99	1	-	-	-	13
100 - 109	-	-	-	-	3
110 - 119	-	-	-	-	3
130 - 139	-	-	-	-	1
160 - 169	1	-	-	-	1
180 - 189	-	-	-	-	1
220 - 229	-	-	-	-	1
310 - 319	-	-	-	-	1
320 - 329	-	-	-	-	1
360 - 369	1	-	-	-	1
430 - 439	1	-	-	-	1
450 - 459	-	-	-	-	1
490 - 499	1	-	-	-	1
520 - 529	-	-	-	-	1
540 - 549	-	-	-	-	1
800 - 809	-	-	-	1	1
Total vessels	141	4	2	2	503
Total gross tonnage . . .	4,597	77	30	853	23,412
Average . . .	33	19	15	426	46

VESSELS DOCUMENTED AS FISHING CRAFT, 1965

TONNAGE DISTRIBUTION

Gross tonnage	New England	Middle Atlantic	Chesapeake	South Atlantic	Gulf
	<u>Number</u>	<u>Number</u>	<u>Number</u>	<u>Number</u>	<u>Number</u>
5 - 9.	7	2	33	10	51
10 - 19.	9	2	17	10	72
20 - 29.	1	1	3	8	18
30 - 39.	2	1	-	3	8
40 - 49.	-	5	-	5	13
50 - 59.	-	-	-	3	5
60 - 69.	-	-	-	2	21
70 - 79.	2	1	-	2	11
80 - 89.	-	-	-	2	24
90 - 99.	1	1	-	29	60
100 - 109.	-	1	-	2	6
110 - 119.	1	-	-	-	1
120 - 129.	1	-	-	1	-
130 - 139.	2	-	-	-	-
140 - 149.	1	-	-	-	-
150 - 159.	4	-	-	-	-
160 - 169.	2	-	-	-	1
170 - 179.	4	-	-	-	-
190 - 199.	1	-	-	-	-
360 - 369.	-	-	-	-	2
510 - 519.	-	-	-	-	2
520 - 529.	-	-	-	-	3
550 - 559.	-	-	-	-	1
570 - 579.	-	-	1	-	-
580 - 589.	-	-	1	-	-
590 - 599.	-	-	1	-	-
Total vessels	38	14	56	77	299
Total gross tonnage	3,007	598	2,283	4,500	17,723
Average	79	43	41	58	59

Gross tonnage	Pacific	Great Lakes	Hawaii	Other	Total
	<u>Number</u>	<u>Number</u>	<u>Number</u>	<u>Number</u>	<u>Number</u>
5 - 9.	30	-	-	-	133
10 - 19.	76	1	-	1	188
20 - 29.	23	1	-	-	55
30 - 39.	6	-	-	-	20
40 - 49.	11	-	-	-	34
50 - 59.	7	-	-	-	15
60 - 69.	4	-	-	-	27
70 - 79.	3	-	-	-	19
80 - 89.	-	-	-	-	26
90 - 99.	1	-	-	-	92
100 - 109.	-	-	-	-	9
110 - 119.	-	-	-	-	2
120 - 129.	-	-	-	-	2
130 - 139.	1	-	-	-	3
140 - 149.	-	-	-	-	1
150 - 159.	-	-	-	-	4
160 - 169.	-	-	-	-	3
170 - 179.	-	-	-	-	4
180 - 189.	1	-	-	-	1
190 - 199.	1	-	-	-	2

(Continued on next page)

VESSELS DOCUMENTED AS FISHING CRAFT, 1965 - Continued

TONNAGE DISTRIBUTION

Gross tonnage	Pacific	Great Lakes	Hawaii	Other	Total
	<u>Number</u>	<u>Number</u>	<u>Number</u>	<u>Number</u>	<u>Number</u>
210 - 219. . . .	1	1	-	-	2
260 - 269. . . .	1	-	-	-	1
270 - 279. . . .	1	-	-	-	1
300 - 309. . . .	1	-	-	-	1
310 - 319. . . .	1	-	-	-	1
320 - 329. . . .	1	-	-	-	1
330 - 339. . . .	1	-	-	-	1
360 - 369. . . .	-	-	-	-	2
420 - 429. . . .	1	-	-	-	1
430 - 439. . . .	1	-	-	-	1
510 - 519. . . .	-	-	-	-	2
520 - 529. . . .	-	-	-	-	3
550 - 559. . . .	-	-	-	-	1
570 - 579. . . .	-	-	-	-	1
580 - 589. . . .	-	-	-	-	1
590 - 599. . . .	1	-	-	-	2
720 - 729. . . .	1	-	-	-	1
Total vessels	175	3	-	1	663
Total gross tonnage . . .	8,099	252	-	12	36,474
Average . . .	46	84	-	12	55

VESSELS DOCUMENTED AS FISHING CRAFT, 1966

TONNAGE DISTRIBUTION

Gross tonnage	New England	Middle Atlantic	Chesapeake	South Atlantic	Gulf
	<u>Number</u>	<u>Number</u>	<u>Number</u>	<u>Number</u>	<u>Number</u>
5 - 9. . . .	4	1	68	3	37
10 - 19. . . .	11	3	24	13	71
20 - 29. . . .	2	2	2	3	25
30 - 39. . . .	1	2	1	2	12
40 - 49. . . .	-	7	-	6	13
50 - 59. . . .	-	1	-	7	10
60 - 69. . . .	-	-	-	4	33
70 - 79. . . .	2	-	-	7	13
80 - 89. . . .	3	1	-	1	35
90 - 99. . . .	-	4	-	26	79
100 - 109. . . .	1	-	-	1	11
110 - 119. . . .	-	1	-	1	8
120 - 129. . . .	-	-	-	2	9
130 - 139. . . .	3	-	-	1	3
140 - 149. . . .	1	-	-	-	1
150 - 159. . . .	1	-	-	-	-
160 - 169. . . .	1	-	-	-	-
180 - 189. . . .	1	-	-	-	-
190 - 199. . . .	1	-	-	-	1
230 - 239. . . .	-	1	-	-	-
260 - 269. . . .	-	-	1	-	-
270 - 279. . . .	1	-	-	-	-
360 - 369. . . .	-	-	-	-	1

(Continued on next page)

VESSELS DOCUMENTED AS FISHING CRAFT, 1966 - Continued

TONNAGE DISTRIBUTION

Gross tonnage	New England	Middle Atlantic	Chesapeake	South Atlantic	Gulf
	<u>Number</u>	<u>Number</u>	<u>Number</u>	<u>Number</u>	<u>Number</u>
380 - 389. . . .	-	-	-	-	1
440 - 449. . . .	2	-	-	-	-
530 - 539. . . .	-	-	-	-	2
600 - 609. . . .	-	-	-	-	8
750 - 759. . . .	-	-	1	-	-
Total vessels	35	23	97	77	373
Total gross tonnage . . .	3,156	1,389	1,858	4,978	27,800
Average . . .	90	60	19	65	74

Gross tonnage	Pacific	Great Lakes	Hawaii	Other	Total
	<u>Number</u>	<u>Number</u>	<u>Number</u>	<u>Number</u>	<u>Number</u>
5 - 9. . . .	49	-	-	-	162
10 - 19. . . .	91	4	2	-	219
20 - 29. . . .	21	-	-	-	55
30 - 39. . . .	10	-	-	-	28
40 - 49. . . .	8	-	-	-	34
50 - 59. . . .	7	-	-	-	25
60 - 69. . . .	2	-	-	-	39
70 - 79. . . .	2	-	-	-	24
80 - 89. . . .	-	-	-	-	40
90 - 99. . . .	1	-	-	-	110
100 - 109. . . .	-	-	-	-	13
110 - 119. . . .	-	-	-	-	10
120 - 129. . . .	-	-	-	-	11
130 - 139. . . .	1	-	-	-	8
140 - 149. . . .	2	1	-	-	5
150 - 159. . . .	-	-	-	-	1
160 - 169. . . .	1	1	-	-	3
170 - 179. . . .	2	-	-	-	2
180 - 189. . . .	-	-	-	-	1
190 - 199. . . .	1	-	-	-	3
230 - 239. . . .	-	-	-	-	1
260 - 269. . . .	1	-	-	-	2
270 - 279. . . .	-	-	-	-	1
290 - 299. . . .	1	-	-	-	1
340 - 349. . . .	1	-	-	-	1
360 - 369. . . .	-	-	-	-	1
380 - 389. . . .	-	-	-	1	2
440 - 449. . . .	-	-	-	-	2
530 - 539. . . .	-	-	-	-	2
600 - 609. . . .	-	-	-	-	8
730 - 739. . . .	1	-	-	-	1
750 - 759. . . .	-	-	-	-	1
Total vessels	202	6	2	1	816
Total gross tonnage . . .	6,239	361	27	386	46,194
Average . . .	31	60	14	386	57

VESSELS DOCUMENTED AS FISHING CRAFT, 1957

LENGTH DISTRIBUTION

Length	New England	Middle Atlantic	Chesapeake	South Atlantic	Gulf
Feet	Number	Number	Number	Number	Number
20 - 29. . . .	-	-	-	3	3
30 - 39. . . .	12	5	88	20	26
40 - 49. . . .	3	3	14	28	35
50 - 59. . . .	2	3	1	48	66
60 - 69. . . .	2	8	1	20	46
70 - 79. . . .	-	2	-	1	3
80 - 89. . . .	1	-	-	-	-
100 - 109. . . .	-	-	-	2	3
110 - 119. . . .	-	1	-	-	-
120 - 129. . . .	-	-	1	1	1
130 - 139. . . .	-	-	-	-	1
190 - 199. . . .	-	1	-	-	1
Total vessels	20	23	104	123	185
Total length.	860	1,429	3,930	6,254	10,014
Average . . .	43	62	38	50	54

Length	Pacific	Great Lakes	Hawaii	Other	Total
Feet	Number	Number	Number	Number	Number
20 - 29. . . .	21	1	-	-	28
30 - 39. . . .	97	4	1	1	254
40 - 49. . . .	30	-	-	-	113
50 - 59. . . .	1	-	-	-	121
60 - 69. . . .	1	-	-	-	78
70 - 79. . . .	1	-	-	-	7
80 - 89. . . .	2	-	-	-	3
100 - 109. . . .	-	-	-	-	5
110 - 119. . . .	1	-	-	-	2
120 - 129. . . .	1	-	-	-	4
130 - 139. . . .	-	-	-	-	1
150 - 159. . . .	1	-	-	-	1
190 - 199. . . .	-	-	-	-	2
Total vessels	156	6	1	1	619
Total length.	5,944	220	31	37	28,719
Average . . .	38	37	31	37	46

VESSELS DOCUMENTED AS FISHING CRAFT, 1958

LENGTH DISTRIBUTION

Length	New England	Middle Atlantic	Chesapeake	South Atlantic	Gulf
Feet	Number	Number	Number	Number	Number
20 - 29. . . .	1	-	-	2	2
30 - 39. . . .	6	3	79	20	39
40 - 49. . . .	2	5	16	28	56
50 - 59. . . .	1	-	1	53	112
60 - 69. . . .	-	-	-	31	71
70 - 79. . . .	2	-	-	-	-

(Continued on next page)

VESSELS DOCUMENTED AS FISHING CRAFT, 1958 - Continued

LENGTH DISTRIBUTION

Length	New England	Middle Atlantic	Chesapeake	South Atlantic	Gulf
<u>Feet</u>	<u>Number</u>	<u>Number</u>	<u>Number</u>	<u>Number</u>	<u>Number</u>
80 - 89. . . .	2	-	-	-	1
100 - 109. . . .	-	1	-	-	-
120 - 129. . . .	-	-	1	-	-
130 - 139. . . .	-	-	-	-	1
140 - 149. . . .	-	1	-	-	-
190 - 199. . . .	-	1	-	-	-
Total vessels	14	11	97	134	282
Total length.	682	774	3,684	6,747	14,613
Average . . .	48	70	38	50	52

Length	Pacific	Great Lakes	Hawaii	Other	Total
<u>Feet</u>	<u>Number</u>	<u>Number</u>	<u>Number</u>	<u>Number</u>	<u>Number</u>
20 - 29. . . .	30	2	-	-	37
30 - 39. . . .	96	6	-	1	250
40 - 49. . . .	27	2	-	-	136
50 - 59. . . .	4	-	-	-	171
60 - 69. . . .	1	-	-	-	103
70 - 79. . . .	-	-	1	-	3
80 - 89. . . .	-	-	-	-	3
90 - 99. . . .	1	-	-	-	1
100 - 109. . . .	1	-	-	-	2
110 - 119. . . .	3	-	-	-	3
120 - 129. . . .	-	-	-	-	1
130 - 139. . . .	-	-	-	-	1
140 - 149. . . .	-	-	-	-	1
190 - 199. . . .	-	-	-	-	1
Total vessels	163	10	1	1	713
Total length.	6,154	352	72	30	33,108
Average . . .	38	35	72	30	46

VESSELS DOCUMENTED AS FISHING CRAFT, 1959

LENGTH DISTRIBUTION

Length	New England	Middle Atlantic	Chesapeake	South Atlantic	Gulf
<u>Feet</u>	<u>Number</u>	<u>Number</u>	<u>Number</u>	<u>Number</u>	<u>Number</u>
20 - 29. . . .	-	1	-	2	4
30 - 39. . . .	6	7	86	19	34
40 - 49. . . .	3	1	14	24	35
50 - 59. . . .	-	1	-	22	44
60 - 69. . . .	4	1	-	10	28
70 - 79. . . .	2	-	-	-	-
90 - 99. . . .	-	-	1	-	-
110 - 119. . . .	-	1	-	-	-
120 - 129. . . .	-	-	1	-	-
130 - 139. . . .	-	-	-	-	1

(Continued on next page)

VESSELS DOCUMENTED AS FISHING CRAFT, 1959 - Continued

LENGTH DISTRIBUTION

Length	New England	Middle Atlantic	Chesapeake	South Atlantic	Gulf
Feet	Number	Number	Number	Number	Number
140 - 149. . . .	-	-	1	-	-
170 - 179. . . .	-	-	1	-	-
Total vessels	15	12	104	77	146
Total length.	740	554	4,214	3,604	7,098
Average . . .	49	46	41	47	49

Length	Pacific	Great Lakes	Hawaii	Other	Total
Feet	Number	Number	Number	Number	Number
20 - 29. . . .	28	1	-	-	36
30 - 39. . . .	83	5	-	-	240
40 - 49. . . .	28	1	1	-	107
50 - 59. . . .	2	-	-	-	69
60 - 69. . . .	-	-	-	-	43
70 - 79. . . .	-	-	-	-	2
90 - 99. . . .	-	-	-	-	1
100 - 109. . . .	1	-	-	-	1
110 - 119. . . .	1	-	-	-	2
120 - 129. . . .	1	-	-	-	2
130 - 139. . . .	1	-	-	-	2
140 - 149. . . .	-	-	-	-	1
170 - 179. . . .	-	-	-	-	1
Total vessels	145	7	1	-	507
Total length.	5,421	248	44	-	21,923
Average . . .	37	35	44	-	43

VESSELS DOCUMENTED AS FISHING CRAFT, 1960

LENGTH DISTRIBUTION

Length	New England	Middle Atlantic	Chesapeake	South Atlantic	Gulf
Feet	Number	Number	Number	Number	Number
20 - 29. . . .	6	2	2	1	1
30 - 39. . . .	20	5	70	21	33
40 - 49. . . .	3	5	8	10	13
50 - 59. . . .	1	3	-	8	24
60 - 69. . . .	4	2	1	5	8
70 - 79. . . .	-	1	-	1	-
100 - 109. . . .	-	-	1	-	-
110 - 119. . . .	-	-	-	1	2
140 - 149. . . .	1	-	-	1	-
150 - 159. . . .	-	-	-	-	6
Total vessels	35	18	82	48	87
Total length.	1,441	815	3,050	2,258	4,725
Average . . .	41	45	37	47	54

(Continued on next page)

VESSELS DOCUMENTED AS FISHING CRAFT, 1960 - Continued

LENGTH DISTRIBUTION

Length	Pacific	Great Lakes	Hawaii	Other	Total
<u>Feet</u>	<u>Number</u>	<u>Number</u>	<u>Number</u>	<u>Number</u>	<u>Number</u>
20 - 29. . . .	41	4	-	-	57
30 - 39. . . .	83	11	-	-	243
40 - 49. . . .	25	3	-	-	67
50 - 59. . . .	4	-	-	-	40
60 - 69. . . .	1	-	-	-	21
70 - 79. . . .	-	-	-	-	2
80 - 89. . . .	1	-	-	-	1
90 - 99. . . .	2	-	-	-	2
100 - 109. . . .	-	-	-	-	1
110 - 119. . . .	1	-	-	-	4
140 - 149. . . .	-	-	-	-	2
150 - 159. . . .	3	-	-	-	9
Total vessels	161	18	-	-	449
Total length.	6,178	615	-	-	19,082
Average . . .	38	34	-	-	42

VESSELS DOCUMENTED AS FISHING CRAFT, 1961

LENGTH DISTRIBUTION

Length	New England	Middle Atlantic	Chesa-peake	South Atlantic	Gulf
<u>Feet</u>	<u>Number</u>	<u>Number</u>	<u>Number</u>	<u>Number</u>	<u>Number</u>
20 - 29. . . .	8	-	-	2	2
30 - 39. . . .	13	6	65	13	30
40 - 49. . . .	3	1	9	13	30
50 - 59. . . .	-	-	1	6	18
60 - 69. . . .	7	-	-	12	20
70 - 79. . . .	1	2	-	1	-
120 - 129. . . .	-	2	-	-	-
140 - 149. . . .	-	1	-	-	-
Total vessels	32	12	75	47	100
Total length.	1,330	791	2,746	2,254	4,688
Average . . .	42	66	37	48	447

Length	Pacific	Great Lakes	Hawaii	Other	Total
<u>Feet</u>	<u>Number</u>	<u>Number</u>	<u>Number</u>	<u>Number</u>	<u>Number</u>
20 - 29. . . .	52	2	-	1	67
30 - 39. . . .	45	10	-	1	183
40 - 49. . . .	29	-	-	-	85
50 - 59. . . .	3	-	-	-	28
60 - 69. . . .	3	-	-	-	42
70 - 79. . . .	1	-	-	-	5
80 - 89. . . .	2	-	-	-	2
100 - 109. . . .	1	-	-	-	1
120 - 129. . . .	2	-	-	-	4
130 - 139. . . .	1	-	-	-	1

(Continued on next page)

VESSELS DOCUMENTED AS FISHING CRAFT, 1961 - Continued

LENGTH DISTRIBUTION

Length	Pacific	Great Lakes	Hawaii	Other	Total
Feet	Number	Number	Number	Number	Number
140 - 149. . . .	-	-	-	-	1
150 - 159. . . .	2	-	-	-	2
160 - 169. . . .	4	-	-	-	4
170 - 179. . . .	2	-	-	-	2
Total vessels	147	12	-	2	427
Total length.	6,707	377	-	63	18,956
Average . . .	46	31	-	32	44

VESSELS DOCUMENTED AS FISHING CRAFT, 1962

LENGTH DISTRIBUTION

Length	New England	Middle Atlantic	Chesapeake	South Atlantic	Gulf
Feet	Number	Number	Number	Number	Number
20 - 29. . . .	4	-	1	-	4
30 - 39. . . .	12	-	33	13	24
40 - 49. . . .	4	1	6	11	29
50 - 59. . . .	2	-	1	8	11
60 - 69. . . .	2	2	-	14	38
70 - 79. . . .	2	-	-	-	1
100 - 109. . . .	-	1	1	1	1
120 - 129. . . .	-	1	-	-	-
150 - 159. . . .	-	-	-	-	1
160 - 169. . . .	-	-	1	-	2
190 - 199. . . .	1	-	-	-	-
Total vessels	27	5	43	47	111
Total length.	1,303	397	1,816	2,379	5,928
Average . . .	48	79	42	51	53

Length	Pacific	Great Lakes	Hawaii	Other	Total
Feet	Number	Number	Number	Number	Number
20 - 29. . . .	23	-	-	-	32
30 - 39. . . .	71	2	-	-	155
40 - 49. . . .	27	-	-	-	78
50 - 59. . . .	2	-	-	-	24
60 - 69. . . .	-	-	-	-	56
70 - 79. . . .	2	-	-	-	5
100 - 109. . . .	1	-	-	-	5
110 - 119. . . .	-	1	-	-	1
120 - 129. . . .	-	-	-	-	1
130 - 139. . . .	1	-	-	-	1
150 - 159. . . .	1	-	-	1	3
160 - 169. . . .	1	-	-	-	4
180 - 189. . . .	-	-	-	1	1
190 - 199. . . .	-	-	-	-	1
Total vessels	129	3	-	2	367
Total length.	5,085	190	-	333	17,431
Average . . .	39	63	-	166	47

VESSELS DOCUMENTED AS FISHING CRAFT, 1963

LENGTH DISTRIBUTION

Length	New England	Middle Atlantic	Chesapeake	South Atlantic	Gulf
<u>Feet</u>	<u>Number</u>	<u>Number</u>	<u>Number</u>	<u>Number</u>	<u>Number</u>
20 - 29. . . .	2	2	1	1	17
30 - 39. . . .	9	5	51	14	72
40 - 49. . . .	2	2	11	10	38
50 - 59. . . .	2	3	-	15	20
60 - 69. . . .	1	4	-	31	83
70 - 79. . . .	3	-	1	1	9
80 - 89. . . .	2	-	-	-	1
100 - 109. . . .	-	-	-	-	1
120 - 129. . . .	-	1	2	-	-
130 - 139. . . .	1	-	-	-	1
140 - 149. . . .	1	1	-	-	-
160 - 169. . . .	-	-	1	-	-
170 - 179. . . .	-	-	-	-	1
Total vessels	23	18	67	72	243
Total length.	1,306	1,025	2,779	3,851	12,082
Average . . .	57	57	41	53	50

Length	Pacific	Great Lakes	Hawaii	Other	Total
<u>Feet</u>	<u>Number</u>	<u>Number</u>	<u>Number</u>	<u>Number</u>	<u>Number</u>
20 - 29. . . .	32	1	-	-	56
30 - 39. . . .	79	1	-	-	231
40 - 49. . . .	39	2	-	-	104
50 - 59. . . .	3	-	-	-	43
60 - 69. . . .	1	-	-	-	120
70 - 79. . . .	-	-	-	-	14
80 - 89. . . .	1	-	-	-	4
90 - 99. . . .	1	-	-	-	1
100 - 109. . . .	-	-	-	-	1
110 - 119. . . .	-	1	-	-	1
120 - 129. . . .	2	-	-	-	5
130 - 139. . . .	-	-	-	-	2
140 - 149. . . .	-	-	-	-	2
150 - 159. . . .	-	-	-	1	1
160 - 169. . . .	-	-	-	-	1
170 - 179. . . .	1	-	-	1	3
Total vessels	159	5	-	2	589
Total length.	6,195	265	-	325	27,828
Average . . .	39	53	-	163	47

VESSELS DOCUMENTED AS FISHING CRAFT, 1964

LENGTH DISTRIBUTION

Length	New England	Middle Atlantic	Chesapeake	South Atlantic	Gulf
<u>Feet</u>	<u>Number</u>	<u>Number</u>	<u>Number</u>	<u>Number</u>	<u>Number</u>
20 - 29. . . .	7	-	1	2	9
30 - 39. . . .	13	1	32	2	55

(Continued on next page)

VESSELS DOCUMENTED AS FISHING CRAFT, 1964 - Continued

LENGTH DISTRIBUTION

Length	New England	Middle Atlantic	Chesapeake	South Atlantic	Gulf
<u>Feet</u>	<u>Number</u>	<u>Number</u>	<u>Number</u>	<u>Number</u>	<u>Number</u>
40 - 49. . . .	4	2	5	8	26
50 - 59. . . .	2	1	-	6	23
60 - 69. . . .	-	4	-	32	105
70 - 79. . . .	5	1	-	-	-
80 - 89. . . .	1	-	-	-	-
100 - 109. . . .	1	-	-	-	-
110 - 119. . . .	-	-	-	-	1
130 - 139. . . .	-	-	-	-	2
150 - 159. . . .	-	-	1	-	-
160 - 169. . . .	-	2	-	-	-
Total vessels	33	11	39	50	221
Total length.	1,466	829	1,510	2,896	11,661
Average . . .	44	75	39	58	53

Length	Pacific	Great Lakes	Hawaii	Other	Total
<u>Feet</u>	<u>Number</u>	<u>Number</u>	<u>Number</u>	<u>Number</u>	<u>Number</u>
20 - 29. . . .	29	1	-	-	49
30 - 39. . . .	56	3	1	-	163
40 - 49. . . .	48	-	1	-	94
50 - 59. . . .	2	-	-	-	34
60 - 69. . . .	2	-	-	1	144
70 - 79. . . .	-	-	-	-	6
80 - 89. . . .	1	-	-	-	2
100 - 109. . . .	-	-	-	-	1
110 - 119. . . .	-	-	-	-	1
120 - 129. . . .	1	-	-	-	1
130 - 139. . . .	-	-	-	-	2
140 - 149. . . .	1	-	-	-	1
150 - 159. . . .	1	-	-	1	3
160 - 169. . . .	-	-	-	-	2
Total vessels	141	4	2	2	503
Total length.	5,629	128	75	214	24,408
Average . . .	40	32	38	107	48

VESSELS DOCUMENTED AS FISHING CRAFT, 1965

LENGTH DISTRIBUTION

Length	New England	Middle Atlantic	Chesapeake	South Atlantic	Gulf
<u>Feet</u>	<u>Number</u>	<u>Number</u>	<u>Number</u>	<u>Number</u>	<u>Number</u>
20 - 29. . . .	3	-	1	5	19
30 - 39. . . .	11	4	41	18	97
40 - 49. . . .	5	1	11	6	31
50 - 59. . . .	-	5	-	11	23
60 - 69. . . .	2	3	-	35	117
70 - 79. . . .	3	1	-	1	2

(Continued on next page)

VESSELS DOCUMENTED AS FISHING CRAFT, 1965 - Continued

LENGTH DISTRIBUTION

Length	New England	Middle Atlantic	Chesapeake	South Atlantic	Gulf
Feet	Number	Number	Number	Number	Number
80 - 89. . . .	7	-	-	-	1
90 - 99. . . .	6	-	-	1	1
100 - 109. . . .	1	-	-	-	-
130 - 139. . . .	-	-	-	-	2
160 - 169. . . .	-	-	1	-	6
200 - 209. . . .	-	-	2	-	-
Total vessels	38	14	56	77	299
Total length.	2,280	715	2,523	4,129	15,711
Average . . .	60	51	45	54	52

Length	Pacific	Great Lakes	Hawaii	Other	Total
Feet	Number	Number	Number	Number	Number
20 - 29. . . .	42	-	-	-	70
30 - 39. . . .	70	1	-	1	241
40 - 49. . . .	37	-	-	-	91
50 - 59. . . .	6	1	-	-	56
60 - 69. . . .	6	-	-	-	163
70 - 79. . . .	1	-	-	-	8
80 - 89. . . .	1	-	-	-	9
90 - 99. . . .	1	-	-	-	9
100 - 109. . . .	1	-	-	-	2
110 - 119. . . .	3	1	-	-	7
120 - 129. . . .	2	-	-	-	2
130 - 139. . . .	2	-	-	-	-
150 - 159. . . .	2	-	-	-	2
160 - 169. . . .	1	-	-	-	8
200 - 209. . . .	-	-	-	-	2
Total vessels	175	3	-	1	661
Total length.	7,583	204	-	37	13,182
Average . . .	43	68	-	37	50

VESSELS DOCUMENTED AS FISHING CRAFT, 1966

LENGTH DISTRIBUTION

Length	New England	Middle Atlantic	Chesapeake	South Atlantic	Gulf
Feet	Number	Number	Number	Number	Number
20 - 29. . . .	3	1	6	2	17
30 - 39. . . .	13	2	77	14	88
40 - 49. . . .	1	3	11	4	40
50 - 59. . . .	1	9	1	13	31
60 - 69. . . .	6	5	-	37	152
70 - 79. . . .	2	2	-	6	32
80 - 89. . . .	3	-	-	1	1
90 - 99. . . .	1	-	-	-	-
100 - 109. . . .	2	-	-	-	-

(Continued on next page)

VESSELS DOCUMENTED AS FISHING CRAFT, 1966 - Continued

LENGTH DISTRIBUTION

Length	New England	Middle Atlantic	Chesapeake	South Atlantic	Gulf
Feet	Number	Number	Number	Number	Number
110 - 119	1	-	-	-	-
120 - 129	-	1	1	-	-
130 - 139	2	-	-	-	1
140 - 149	-	-	-	-	1
150 - 159	-	-	-	-	10
170 - 179	-	-	1	-	-
Total vessels	35	23	97	77	373
Total length	2,123	1,311	3,706	4,346	21,166
Average	60	57	38	56	57

Length	Pacific	Great Lakes	Hawaii	Other	Total
Feet	Number	Number	Number	Number	Number
70 - 79	71	2	-	-	102
80 - 89	69	2	1	-	266
90 - 99	39	-	1	-	99
100 - 109	10	-	-	-	65
110 - 119	2	-	-	-	202
120 - 129	1	-	-	-	43
130 - 139	6	2	-	-	13
140 - 149	-	-	-	-	1
150 - 159	1	-	-	1	4
110 - 119	-	-	-	-	1
120 - 129	2	-	-	-	4
130 - 139	1	-	-	-	4
140 - 149	-	-	-	-	1
150 - 159	-	-	-	-	10
170 - 179	-	-	-	-	1
Total vessels	207	6	2	1	816
Total length	7,713	291	83	108	40,847
Average	38	48	42	108	50



SHRIMP TRAWLER

VESSELS DOCUMENTED AS FISHING CRAFT, 1957

HORSEPOWER DISTRIBUTION

Horsepower	New England	Middle Atlantic	Chesapeake	South Atlantic	Gulf
	<u>Number</u>	<u>Number</u>	<u>Number</u>	<u>Number</u>	<u>Number</u>
Under 50.	-	-	-	-	4
50 - 99	6	-	15	12	13
100 - 149	5	2	56	25	35
150 - 199	5	9	16	67	102
200 - 249	2	8	10	14	8
250 - 299	-	-	5	-	6
300 - 349	1	-	1	1	9
400 - 449	-	-	-	-	1
450 - 499	1	2	-	1	1
500 - 599	-	-	-	1	-
700 - 799	-	-	-	1	-
900 - 999	-	1	-	1	-
1000 - 1099	-	-	1	-	2
1100 - 1199	-	-	-	-	2
1200 - 1299	-	1	-	-	2
Total vessels	20	23	104	123	185
Total power	3,104	6,495	15,309	21,040	35,077
Average	155	282	147	171	190

Horsepower	Pacific	Great Lakes	Hawaii	Other	Total
	<u>Number</u>	<u>Number</u>	<u>Number</u>	<u>Number</u>	<u>Number</u>
Under 50.	7	-	-	-	11
50 - 99	29	2	-	-	77
100 - 149	51	-	1	1	176
150 - 199	32	1	-	-	232
200 - 249	25	2	-	-	69
250 - 299	5	-	-	-	16
300 - 349	3	1	-	-	16
400 - 449	1	-	-	-	2
450 - 499	-	-	-	-	5
500 - 599	-	-	-	-	1
700 - 799	-	-	-	-	1
900 - 999	1	-	-	-	3
1000 - 1099	1	-	-	-	4
1100 - 1199	-	-	-	-	2
1200 - 1299	-	-	-	-	3
1500 and over	1	-	-	-	1
Total vessels	156	6	1	1	619
Total power	25,582	1,106	130	115	107,958
Average	164	184	130	115	174

VESSELS DOCUMENTED AS FISHING CRAFT, 1958

HORSEPOWER DISTRIBUTION

Horsepower	New England	Middle Atlantic	Chesapeake	South Atlantic	Gulf
	<u>Number</u>	<u>Number</u>	<u>Number</u>	<u>Number</u>	<u>Number</u>
Under 50	-	-	1	-	-
50 - 99	3	3	14	9	18
100 - 149	3	2	52	36	50
150 - 199	3	1	12	62	165
200 - 249	1	1	11	22	28
250 - 299	-	1	2	2	5
300 - 349	-	-	2	2	13
350 - 399	1	-	-	-	1
450 - 499	1	-	-	1	-
500 - 599	-	1	-	-	1
600 - 699	-	1	-	-	-
1000 - 1099	-	-	1	-	-
1200 - 1299	-	1	-	-	1
Total vessels	14	11	97	134	282
Total power	1,053	1,508	14,226	21,401	47,037
Average	218	119	147	160	167

Horsepower	Pacific	Great Lakes	Hawaii	Other	Total
	<u>Number</u>	<u>Number</u>	<u>Number</u>	<u>Number</u>	<u>Number</u>
Under 50	5	-	-	1	9
50 - 99	32	1	-	-	82
100 - 149	50	1	-	-	206
150 - 199	39	1	-	-	285
200 - 249	17	1	1	-	82
250 - 299	3	-	-	-	13
300 - 349	3	-	-	-	20
350 - 399	-	-	-	-	2
450 - 499	-	-	-	-	4
500 - 599	-	-	-	-	2
600 - 699	-	-	-	-	1
900 - 999	3	-	-	-	3
1000 - 1099	-	-	-	-	1
1200 - 1299	-	-	-	-	2
1500 and over	1	-	-	-	1
Total vessels	163	10	1	1	713
Total power	27,486	1,310	200	511	118,219
Average	169	131	200	-	166



VESSELS DOCUMENTED AS FISHING CRAFT, 1959

HORSEPOWER DISTRIBUTION

Horsepower	New England	Middle Atlantic	Chesapeake	South Atlantic	Gulf
	<u>Number</u>	<u>Number</u>	<u>Number</u>	<u>Number</u>	<u>Number</u>
Under 50.	-	-	3	-	5
50 - 99	3	2	17	5	13
100 - 149	1	3	44	14	26
150 - 199	4	4	16	45	74
200 - 249	3	1	11	9	20
250 - 299	1	-	5	2	1
300 - 349	2	-	2	-	6
350 - 399	-	1	-	1	-
400 - 449	-	-	2	-	-
450 - 499	-	-	2	-	-
500 - 599	1	-	-	-	-
800 - 899	-	-	-	-	1
900 - 999	-	1	-	1	-
1000 - 1099	-	-	1	-	-
1200 - 1299	-	-	1	-	-
Total vessels	15	12	104	77	146
Total power	3,133	2,785	17,803	13,192	23,699
Average	209	232	171	171	162

Horsepower	Pacific	Great Lakes	Hawaii	Other	Total
	<u>Number</u>	<u>Number</u>	<u>Number</u>	<u>Number</u>	<u>Number</u>
Under 50.	6	-	-	-	14
50 - 99	24	2	-	-	66
100 - 149	48	2	-	-	138
150 - 199	37	1	-	-	181
200 - 249	22	1	1	-	68
250 - 299	2	1	-	-	12
300 - 349	2	-	-	-	12
350 - 399	-	-	-	-	2
400 - 449	-	-	-	-	2
450 - 499	-	-	-	-	2
500 - 599	1	-	-	-	2
800 - 899	1	-	-	-	2
900 - 999	1	-	-	-	3
1000 - 1099	1	-	-	-	2
1200 - 1299	-	-	-	-	1
Total vessels	145	7	1	-	507
Total power	23,366	1,007	225	-	85,210
Average	161	144	225	-	168

VESSELS DOCUMENTED AS FISHING CRAFT, 1960

HORSEPOWER DISTRIBUTION

Horsepower	New England	Middle Atlantic	Chesapeake	South Atlantic	Gulf
	<u>Number</u>	<u>Number</u>	<u>Number</u>	<u>Number</u>	<u>Number</u>
Under 50.	3	-	2	-	3
50 - 99	11	2	9	3	16
100 - 149	11	2	35	9	15
150 - 199	5	7	12	21	37
200 - 249	-	2	9	8	4
250 - 299	1	2	8	1	1
300 - 349	3	-	5	1	3
350 - 399	-	-	-	1	-
400 - 449	-	1	-	1	-
450 - 499	-	1	1	1	-
500 - 599	-	-	-	1	-
600 - 699	-	1	1	-	2
900 - 999	-	-	-	-	6
1000 - 1099	1	-	-	-	-
1200 - 1299	-	-	-	1	-
Total vessels	35	18	82	48	87
Total power	5,364	4,191	13,803	10,129	18,038
Average	153	233	168	211	207

Horsepower	Pacific	Great Lakes	Hawaii	Other	Total
	<u>Number</u>	<u>Number</u>	<u>Number</u>	<u>Number</u>	<u>Number</u>
Under 50.	7	-	-	-	15
50 - 99	29	2	-	-	72
100 - 149	54	9	-	-	135
150 - 199	45	6	-	-	133
200 - 249	14	-	-	-	37
250 - 299	3	1	-	-	17
300 - 349	3	-	-	-	15
350 - 399	-	-	-	-	1
400 - 449	1	-	-	-	3
450 - 499	1	-	-	-	4
500 - 599	-	-	-	-	1
600 - 699	-	-	-	-	4
800 - 899	1	-	-	-	1
900 - 999	-	-	-	-	6
1000 - 1099	-	-	-	-	1
1200 - 1299	-	-	-	-	1
1500 and over	3	-	-	-	3
Total vessels	161	18	-	-	449
Total power	28,309	2,443	-	-	82,277
Average	176	136	-	-	183

VESSELS DOCUMENTED AS FISHING CRAFT, 1961

HORSEPOWER DISTRIBUTION

Horsepower	New England	Middle Atlantic	Chesapeake	South Atlantic	Gulf
	<u>Number</u>	<u>Number</u>	<u>Number</u>	<u>Number</u>	<u>Number</u>
Under 50.	1	1	1	-	4
50 - 99	4	-	6	1	9
100 - 149	10	2	36	6	21
150 - 199	4	1	13	20	51
200 - 249	4	1	8	14	7
250 - 299	3	-	7	2	4
300 - 349	3	2	3	1	3
350 - 399	1	-	1	-	-
400 - 449	2	-	-	-	-
450 - 499	-	1	-	-	-
500 - 599	-	-	-	2	1
600 - 699	-	2	-	1	-
1000 - 1099	-	2	-	-	-
Total vessels	32	12	75	47	100
Total power	6,178	5,046	12,066	9,798	15,776
Average	193	421	161	208	158

Horsepower	Pacific	Great Lakes	Hawaii	Other	Total
	<u>Number</u>	<u>Number</u>	<u>Number</u>	<u>Number</u>	<u>Number</u>
Under 50.	7	-	-	-	14
50 - 99	28	4	-	1	53
100 - 149	19	5	-	1	100
150 - 199	35	1	-	-	125
200 - 249	31	1	-	-	66
250 - 299	5	-	-	-	21
300 - 349	8	-	-	-	20
350 - 399	-	-	-	-	2
400 - 449	-	-	-	-	2
450 - 499	3	-	-	-	4
500 - 599	-	1	-	-	4
600 - 699	3	-	-	-	6
1000 - 1099	4	-	-	-	6
1300 - 1399	1	-	-	-	1
1500 and over	3	-	-	-	3
Total vessels	147	12	-	2	427
Total power	34,663	1,929	-	187	85,643
Average	236	161	-	94	201

VESSELS DOCUMENTED AS FISHING CRAFT, 1962

HORSEPOWER DISTRIBUTION

Horsepower	New England	Middle Atlantic	Chesapeake	South Atlantic	Gulf
	<u>Number</u>	<u>Number</u>	<u>Number</u>	<u>Number</u>	<u>Number</u>
Under 50.	-	-	1	-	-
50 - 99	3	-	5	2	6
100 - 149	6	-	12	9	18
150 - 199	5	1	7	13	48
200 - 249	4	-	12	17	28
250 - 299	1	-	2	3	2
300 - 349	3	1	1	-	4
350 - 399	1	1	-	-	1
400 - 449	1	-	1	-	-
450 - 499	1	1	-	-	-
500 - 599	1	-	1	2	-
700 - 799	1	-	-	1	1
900 - 999	-	-	-	-	1
1000 - 1099	-	1	1	-	2
Total vessels	27	5	43	47	111
Total power	6,452	2,285	8,500	9,544	22,296
Average	239	457	198	203	201

Horsepower	Pacific	Great Lakes	Hawaii	Other	Total
	<u>Number</u>	<u>Number</u>	<u>Number</u>	<u>Number</u>	<u>Number</u>
Under 50.	3	-	-	-	4
50 - 99	22	1	-	-	39
100 - 149	39	-	-	-	84
150 - 199	40	1	-	-	115
200 - 249	14	-	-	-	75
250 - 299	4	-	-	-	12
300 - 349	1	-	-	-	10
350 - 399	3	-	-	-	6
400 - 449	-	-	-	-	2
450 - 499	-	-	-	-	2
500 - 599	-	-	-	-	4
700 - 799	-	-	-	-	3
800 - 899	-	1	-	-	1
900 - 999	1	-	-	-	2
1000 - 1099	1	-	-	-	5
1400 - 1499	-	-	-	1	1
1500 and over	1	-	-	1	2
Total vessels	129	3	-	2	367
Total power	22,521	1,004	-	3,050	75,652
Average	175	335	-	1,525	206

VESSELS DOCUMENTED AS FISHING CRAFT, 1963

HORSEPOWER DISTRIBUTION

Horsepower	New England	Middle Atlantic	Chesapeake	South Atlantic	Gulf
	<u>Number</u>	<u>Number</u>	<u>Number</u>	<u>Number</u>	<u>Number</u>
Under 50.	-	2	2	3	3
50 - 99	2	1	1	3	31
100 - 149	5	1	30	4	55
150 - 199	3	2	6	21	64
200 - 249	3	6	12	24	60
250 - 299	-	1	4	1	5
300 - 349	1	3	5	15	11
350 - 399	3	-	-	-	8
400 - 449	-	-	2	-	1
450 - 499	-	-	2	-	3
500 - 599	2	-	-	-	-
600 - 699	1	-	-	1	-
700 - 799	2	1	-	-	-
900 - 999	-	-	-	-	1
1000 - 1099	1	1	2	-	-
1100 - 1199	-	-	1	-	1
Total vessels	23	18	67	72	243
Total power	7,545	4,877	15,110	15,018	44,090
Average	328	271	226	208	181

Horsepower	Pacific	Great Lakes	Hawaii	Other	Total
	<u>Number</u>	<u>Number</u>	<u>Number</u>	<u>Number</u>	<u>Number</u>
Under 50.	6	1	-	-	17
50 - 99	19	-	-	-	57
100 - 149	48	3	-	-	146
150 - 199	44	-	-	-	140
200 - 249	15	-	-	-	120
250 - 299	11	-	-	-	22
300 - 349	7	-	-	-	42
350 - 399	1	-	-	-	12
400 - 449	2	-	-	-	5
450 - 499	2	-	-	-	7
500 - 599	-	-	-	-	2
600 - 699	-	-	-	-	2
700 - 799	1	-	-	-	4
800 - 899	-	1	-	-	1
900 - 999	-	-	-	-	1
1000 - 1099	2	-	-	-	6
1100 - 1199	-	-	-	-	2
1300 - 1399	1	-	-	-	1
1500 and over	-	-	-	1	1
Total vessels	159	5	-	1	588
Total power	29,624	1,200	-	1,600	119,064
Average	186	240	-	1,600	202

VESSELS DOCUMENTED AS FISHING CRAFT, 1964

HORSEPOWER DISTRIBUTION

Horsepower	New England	Middle Atlantic	Chesapeake	South Atlantic	Gulf
	<u>Number</u>	<u>Number</u>	<u>Number</u>	<u>Number</u>	<u>Number</u>
Under 50.	-	-	2	-	2
50 - 99	3	-	3	2	14
100 - 149	8	1	16	3	35
150 - 199	3	2	9	10	59
200 - 249	7	1	6	8	57
250 - 299	1	1	-	1	6
300 - 349	3	-	1	26	42
350 - 399	4	1	-	-	2
400 - 449	2	1	1	-	1
500 - 599	1	1	-	-	-
600 - 699	-	-	-	-	1
700 - 799	1	-	-	-	-
800 - 899	-	1	-	-	-
900 - 999	-	1	-	-	1
1000 - 1099	-	1	-	-	-
1300 - 1399	-	-	-	-	1
1500 and over	-	-	1	-	-
Total vessels	33	11	39	50	221
Total power	8,165	4,998	7,319	12,218	46,497
Average	247	454	188	244	210

Horsepower	Pacific	Great Lakes	Hawaii	Other	Total
	<u>Number</u>	<u>Number</u>	<u>Number</u>	<u>Number</u>	<u>Number</u>
Under 50.	5	1	-	-	10
50 - 99	9	1	-	-	32
100 - 149	39	1	1	-	104
150 - 199	43	1	-	-	127
200 - 249	19	-	1	1	100
250 - 299	9	-	-	-	18
300 - 349	11	-	-	-	83
350 - 399	-	-	-	-	7
400 - 499	2	-	-	-	7
500 - 599	1	-	-	-	3
600 - 699	1	-	-	-	2
700 - 799	-	-	-	-	1
800 - 899	-	-	-	-	1
900 - 999	-	-	-	-	2
1000 - 1099	1	-	-	-	2
1300 - 1399	-	-	-	-	1
1500 and over	1	-	-	1	3
Total vessels	141	4	2	2	503
Total power	27,736	415	330	1,800	97,260
Average	197	104	165	900	193

VESSELS DOCUMENTED AS FISHING CRAFT, 1965

HORSEPOWER DISTRIBUTION

Horsepower	New England	Middle Atlantic	Chesapeake	South Atlantic	Gulf
	<u>Number</u>	<u>Number</u>	<u>Number</u>	<u>Number</u>	<u>Number</u>
Under 50.	-	-	2	-	1
50 - 99	3	1	3	4	36
100 - 149	7	1	16	8	56
150 - 199	-	7	8	13	61
200 - 249	4	1	10	11	52
250 - 299	2	-	7	2	5
300 - 349	4	2	1	32	68
350 - 399	-	-	4	3	3
400 - 449	8	-	-	2	1
450 - 499	1	2	-	-	5
500 - 599	5	-	1	2	1
600 - 699	2	-	1	-	2
700 - 799	2	-	-	-	-
1000 - 1099	-	-	1	-	1
1400 - 1499	-	-	-	-	1
1500 and over	-	-	2	-	6
Total vessels	38	14	56	77	299
Total power	12,910	3,210	15,223	19,043	70,430
Average	340	229	272	247	236

Horsepower	Pacific	Great Lakes	Hawaii	Other	Total
	<u>Number</u>	<u>Number</u>	<u>Number</u>	<u>Number</u>	<u>Number</u>
Under 50.	4	-	-	-	7
50 - 99	20	-	-	-	67
100 - 149	45	-	-	-	133
150 - 199	48	-	-	-	137
200 - 249	17	-	-	1	96
250 - 299	13	-	-	-	29
300 - 349	10	-	-	-	117
350 - 399	3	-	-	-	13
400 - 449	1	1	-	-	13
450 - 499	4	-	-	-	12
500 - 599	2	1	-	-	12
600 - 699	3	-	-	-	8
700 - 799	-	-	-	-	2
800 - 899	2	1	-	-	3
1000 - 1099	1	-	-	-	3
1300 - 1399	1	-	-	-	1
1400 - 1499	-	-	-	-	1
1500 and over	1	-	-	-	9
Total vessels	175	3	-	1	663
Total power	37,709	1,700	-	225	160,450
Average	215	567	-	225	242

VESSELS DOCUMENTED AS FISHING CRAFT, 1966

HORSEPOWER DISTRIBUTION

Horsepower	New England	Middle Atlantic	Chesapeake	South Atlantic	Gulf
	<u>Number</u>	<u>Number</u>	<u>Number</u>	<u>Number</u>	<u>Number</u>
Under 50.	-	-	-	-	11
50 - 99	2	-	6	1	35
100 - 149	5	-	27	5	35
150 - 199	7	9	13	13	55
200 - 249	2	2	21	12	58
250 - 299	-	1	9	2	5
300 - 349	6	8	8	16	116
350 - 399	2	-	8	21	39
400 - 449	1	-	2	4	2
450 - 499	1	-	1	-	4
500 - 599	1	1	-	3	1
600 - 699	2	1	-	-	-
700 - 799	5	-	-	-	-
1000 - 1499	1	1	1	-	2
1500 and over	-	-	1	-	10
Total vessels	35	23	97	77	373
Total power	12,691	7,092	22,832	22,525	104,513
Average	363	308	235	293	280

Horsepower	Pacific	Great Lakes	Hawaii	Other	Total
	<u>Number</u>	<u>Number</u>	<u>Number</u>	<u>Number</u>	<u>Number</u>
Under 50.	10	1	-	-	23
50 - 99	15	2	-	-	60
100 - 149	55	1	-	-	128
150 - 199	36	-	1	-	134
200 - 249	22	-	1	-	118
250 - 299	31	-	-	-	48
300 - 349	13	-	-	-	167
350 - 399	4	-	-	-	74
400 - 449	6	-	-	-	15
450 - 499	2	-	-	-	8
500 - 599	3	-	-	-	9
600 - 699	2	-	-	-	5
700 - 799	1	2	-	1	9
1000 - 1499	1	-	-	-	6
1500 and over	1	-	-	-	12
Total vessels	202	6	2	1	816
Total power	42,432	1,875	420	725	215,025
Average	210	312	210	725	264



The Mark I measures 198 gross tons, 138 net tons, and 87 feet in length. It has 750 horsepower. The vessel was constructed for Einar Pedersen under the United States Fishery Fleet Improvement Act (P.L. 88-516 as amended). It is designed for a combination of king crab and halibut fishing in the Northeastern Pacific Ocean.

NEW ENGLAND PORTS

VESSELS DOCUMENTED AS FISHING CRAFT, 1957-66

TONNAGE DISTRIBUTION

Gross tonnage	1957	1958	1959	1960	1961
	<u>Number</u>	<u>Number</u>	<u>Number</u>	<u>Number</u>	<u>Number</u>
5 - 9	2	2	3	16	10
10 - 19	11	5	4	11	12
20 - 29	2	2	1	3	1
30 - 39	1	-	1	-	1
40 - 49	1	1	-	-	1
50 - 59	-	-	1	-	-
60 - 69	1	-	2	2	3
70 - 79	-	1	-	-	1
80 - 89	1	-	-	-	-
90 - 99	-	-	1	2	2
110 - 119	1	1	2	-	1
130 - 139	-	2	-	-	-
180 - 189	-	-	-	1	-
Total vessels	20	14	15	35	32
Total gross tonnage	542	617	637	832	892
Average	27	44	42	24	28

Gross tonnage	1962	1963	1964	1965	1966	Total
	<u>Number</u>	<u>Number</u>	<u>Number</u>	<u>Number</u>	<u>Number</u>	<u>Number</u>
5 - 9	6	4	12	7	4	66
10 - 19	10	8	9	9	11	90
20 - 29	3	1	1	1	2	17
30 - 39	3	-	2	2	1	11
40 - 49	-	1	-	-	-	4
50 - 59	-	1	1	-	-	3
60 - 69	1	-	-	-	-	9
70 - 79	-	1	1	2	2	8
80 - 89	-	1	-	-	3	5
90 - 99	-	-	2	1	-	8
100 - 109	1	-	1	-	1	3
110 - 119	2	2	2	1	-	12
120 - 129	-	-	-	1	-	1
130 - 139	-	-	1	2	3	8
140 - 149	-	-	-	1	1	2
150 - 159	-	1	-	4	1	6
160 - 169	-	1	-	2	1	4
170 - 179	-	-	-	4	-	4
180 - 189	-	-	1	-	1	3
190 - 199	-	-	-	1	1	2
270 - 279	-	-	-	-	1	1
290 - 299	-	1	-	-	-	1
440 - 449	-	-	-	-	2	2
450 - 459	-	1	-	-	-	1
490 - 499	1	-	-	-	-	1
Total vessels	27	23	33	38	35	272
Total gross tonnage	1,226	1,713	1,255	3,007	3,156	13,877
Average	45	74	38	79	90	51

MIDDLE ATLANTIC PORTS

45

VESSELS DOCUMENTED AS FISHING CRAFT, 1957-66

TONNAGE DISTRIBUTION

Gross tonnage	1957	1958	1959	1960	1961
	<u>Number</u>	<u>Number</u>	<u>Number</u>	<u>Number</u>	<u>Number</u>
5 - 9	2	-	4	2	3
10 - 19	5	6	4	7	3
20 - 29	-	2	2	2	1
30 - 39	2	-	-	-	-
40 - 49	2	-	-	4	-
50 - 59	1	-	-	1	-
60 - 69	6	-	-	1	1
70 - 79	3	-	1	-	-
80 - 89	-	-	-	1	1
160 - 169	-	1	-	-	-
190 - 199	-	1	-	-	-
230 - 239	-	-	-	-	1
250 - 259	-	-	-	-	1
370 - 379	1	-	1	-	-
580 - 589	-	-	-	-	1
610 - 619	1	-	-	-	-
640 - 649	-	1	-	-	-
Total vessels	23	11	12	18	12
Total gross tonnage . . .	1,910	1,123	583	539	1,315
Average . . .	83	102	49	30	110

Gross tonnage	1962	1963	1964	1965	1966	Total
	<u>Number</u>	<u>Number</u>	<u>Number</u>	<u>Number</u>	<u>Number</u>	<u>Number</u>
5 - 9	-	5	-	2	1	19
10 - 19	1	4	3	2	3	38
20 - 29	-	1	1	1	2	12
30 - 39	-	1	-	1	2	6
40 - 49	1	1	-	5	7	20
50 - 59	-	-	2	-	1	5
60 - 69	-	-	1	-	-	9
70 - 79	1	4	1	1	-	11
80 - 89	-	-	-	-	1	3
90 - 99	-	-	-	1	4	5
100 - 109	-	-	-	1	-	1
110 - 119	-	-	1	-	1	2
130 - 139	1	-	-	-	-	1
160 - 169	-	-	-	-	-	1
190 - 199	-	-	-	-	-	1
230 - 239	-	-	-	-	1	2
250 - 259	1	-	-	-	-	2
260 - 269	-	1	-	-	-	1
310 - 319	-	1	-	-	-	1
370 - 379	-	-	-	-	-	2
520 - 529	-	-	1	-	-	1
540 - 549	-	-	1	-	-	1
580 - 589	-	-	-	-	-	1
610 - 619	-	-	-	-	-	1
640 - 649	-	-	-	-	-	1
Total vessels	5	18	11	14	23	147
Total gross tonnage . . .	520	1,076	1,513	598	1,389	10,566
Average . . .	104	60	138	43	60	72

CHESAPEAKE BAY PORTS

VESSELS DOCUMENTED AS FISHING CRAFT, 1957-66

TONNAGE DISTRIBUTION

Gross tonnage	1957	1958	1959	1960	1961
	<u>Number</u>	<u>Number</u>	<u>Number</u>	<u>Number</u>	<u>Number</u>
5 - 9	87	83	81	64	57
10 - 19	13	12	15	14	16
20 - 29	2	1	3	2	2
30 - 39	-	-	1	-	-
40 - 49	1	-	-	-	-
50 - 59	-	-	-	1	-
110 - 119	-	-	-	1	-
190 - 199	-	-	1	-	-
200 - 209	-	-	1	-	-
240 - 249	-	1	-	-	-
250 - 259	1	-	1	-	-
260 - 269	-	-	1	-	-
Total vessels	104	97	104	82	75
Total gross tonnage	1,109	1,018	1,780	827	649
Average	11	10	17	10	9

Gross tonnage	1962	1963	1964	1965	1966	Total
	<u>Number</u>	<u>Number</u>	<u>Number</u>	<u>Number</u>	<u>Number</u>	<u>Number</u>
5 - 9	28	47	30	33	68	578
10 - 19	10	13	6	17	24	140
20 - 29	2	3	2	3	2	22
30 - 39	1	-	-	-	1	3
40 - 49	-	-	-	-	-	1
50 - 59	-	-	-	-	-	1
110 - 119	-	1	-	-	-	2
120 - 129	1	-	-	-	-	1
190 - 199	-	-	-	-	-	1
200 - 209	-	-	-	-	-	1
240 - 249	-	-	-	-	-	1
250 - 259	-	2	-	-	-	4
260 - 269	-	-	-	-	1	2
450 - 459	-	-	1	-	-	1
530 - 539	-	1	-	-	-	1
540 - 549	1	-	-	-	-	1
570 - 579	-	-	-	1	-	1
580 - 589	-	-	-	1	-	1
590 - 599	-	-	-	1	-	1
750 - 759	-	-	-	-	1	1
Total vessels	43	67	39	56	97	764
Total gross tonnage	1,066	1,710	783	2,283	1,858	13,083
Average	25	26	20	41	19	17

SOUTH ATLANTIC PORTS

VESSELS DOCUMENTED AS FISHING CRAFT, 1957-66

TONNAGE DISTRIBUTION

Gross tonnage	1957	1958	1959	1960	1961
	<u>Number</u>	<u>Number</u>	<u>Number</u>	<u>Number</u>	<u>Number</u>
5 - 9	6	4	2	10	6
10 - 19	14	17	14	10	9
20 - 29	13	8	14	10	6
30 - 39	20	22	19	4	7
40 - 49	43	39	11	4	5
50 - 59	3	16	8	2	2
60 - 69	16	22	7	4	5
70 - 79	3	4	2	1	7
80 - 89	-	1	-	1	-
90 - 99	1	1	-	-	-
100 - 109	1	-	-	-	-
190 - 199	2	-	-	1	-
250 - 259	1	-	-	-	-
420 - 429	-	-	-	1	-
Total vessels	123	134	77	48	47
Total gross tonnage . . .	5,412	5,690	2,709	1,933	1,757
Average . . .	44	42	35	40	37

Gross tonnage	1962	1963	1964	1965	1966	Total
	<u>Number</u>	<u>Number</u>	<u>Number</u>	<u>Number</u>	<u>Number</u>	<u>Number</u>
5 - 9	3	4	3	10	3	51
10 - 19	12	10	3	10	13	112
20 - 29	5	7	2	8	3	76
30 - 39	4	3	5	3	2	89
40 - 49	4	14	4	5	6	135
50 - 59	4	4	4	3	7	53
60 - 69	2	3	3	2	4	68
70 - 79	11	27	15	2	7	79
80 - 89	-	-	4	2	1	9
90 - 99	-	-	7	29	26	64
100 - 109	-	-	-	2	1	4
110 - 119	1	-	-	-	1	2
120 - 129	-	-	-	1	2	3
130 - 139	-	-	-	-	1	1
190 - 199	-	-	-	-	-	3
210 - 219	1	-	-	-	-	1
250 - 259	-	-	-	-	-	1
420 - 429	-	-	-	-	-	1
Total vessels	47	72	50	77	77	752
Total gross tonnage . . .	2,092	3,454	3,003	4,500	4,978	35,528
Average . . .	45	48	60	58	65	47

GULF OF MEXICO PORTS

VESSELS DOCUMENTED AS FISHING CRAFT, 1957-66

TONNAGE DISTRIBUTION

Gross tonnage	1957	1958	1959	1960	1961
	<u>Number</u>	<u>Number</u>	<u>Number</u>	<u>Number</u>	<u>Number</u>
5 - 9	13	12	14	8	9
10 - 19	21	42	33	27	33
20 - 29	11	8	11	8	15
30 - 39	24	39	18	8	8
40 - 49	23	25	20	9	2
50 - 59	28	49	12	8	13
60 - 69	51	89	25	9	12
70 - 79	6	16	9	1	7
80 - 89	1	-	3	1	1
90 - 99	-	1	-	-	-
100 - 109	1	-	-	-	-
130 - 139	1	-	-	-	-
170 - 179	1	-	-	-	-
190 - 199	2	-	-	-	-
230 - 239	-	-	-	2	-
250 - 259	1	-	-	-	-
290 - 299	-	1	-	-	-
410 - 419	-	-	1	-	-
460 - 469	-	-	-	1	-
470 - 479	-	-	-	5	-
600 - 609	1	-	-	-	-
Total vessels	185	282	146	87	100
Total gross tonnage . . .	9,488	13,161	5,905	5,754	3,350
Average	51	47	40	66	34

Gross tonnage	1962	1963	1964	1965	1966	Total
	<u>Number</u>	<u>Number</u>	<u>Number</u>	<u>Number</u>	<u>Number</u>	<u>Number</u>
5 - 9	10	41	12	51	37	207
10 - 19	26	62	59	72	71	446
20 - 29	13	19	15	18	25	143
30 - 39	14	10	7	8	12	148
40 - 49	3	9	7	13	13	124
50 - 59	2	6	14	5	10	147
60 - 69	13	30	29	21	33	312
70 - 79	24	40	49	11	13	176
80 - 89	2	11	21	24	35	99
90 - 99	-	2	3	60	79	145
100 - 109	-	2	2	6	11	22
110 - 119	-	-	-	1	8	9
120 - 129	-	-	-	-	9	9
130 - 139	-	-	-	-	3	4
140 - 149	-	9	-	-	1	10
160 - 169	-	-	-	1	-	1
170 - 179	-	-	-	-	-	1
190 - 199	-	-	-	-	1	3
210 - 219	1	-	-	-	-	1
220 - 229	-	-	1	-	-	1
230 - 239	-	-	-	-	-	2
250 - 259	-	-	-	-	-	1
260 - 269	1	-	-	-	-	1
290 - 299	-	-	-	-	-	1
300 - 309	-	1	-	-	-	1
310 - 319	-	-	1	-	-	1

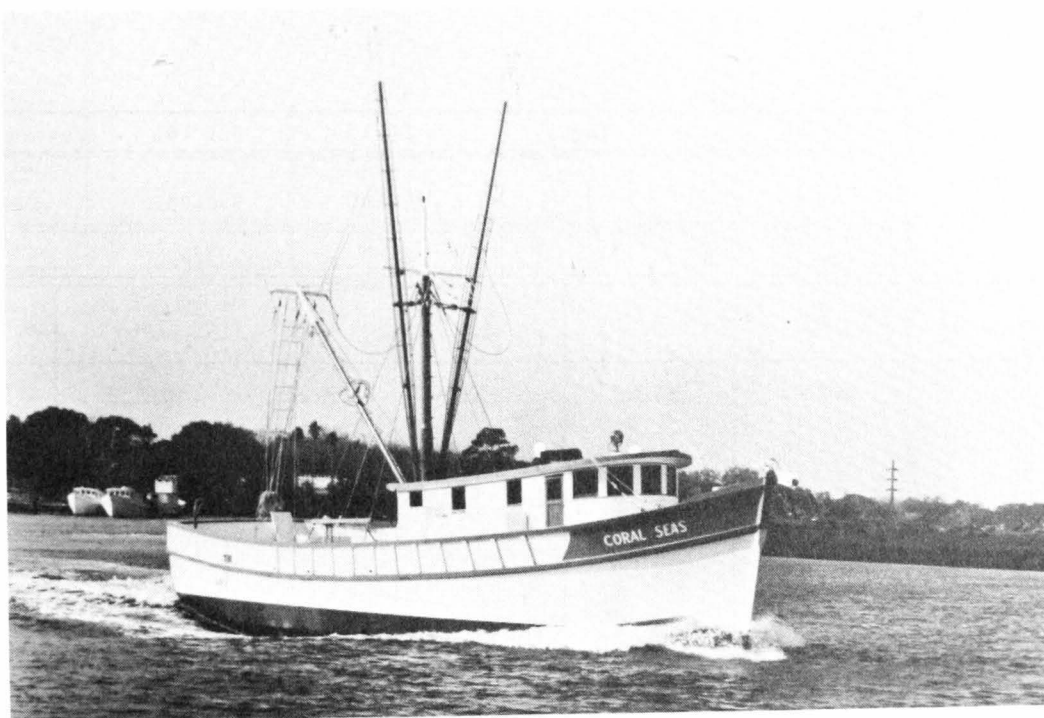
(Continued on next page)

GULF OF MEXICO PORTS

VESSELS DOCUMENTED AS FISHING CRAFT, 1957-66

TONNAGE DISTRIBUTION - Continued

Gross tonnage	1962	1963	1964	1965	1966	Total
	<u>Number</u>	<u>Number</u>	<u>Number</u>	<u>Number</u>	<u>Number</u>	<u>Number</u>
320 - 329	-	-	1	-	-	1
360 - 369	-	-	-	2	1	3
380 - 389	-	-	-	-	1	1
410 - 419	-	-	-	-	-	1
460 - 469	-	-	-	-	-	1
470 - 479	-	-	-	-	-	5
480 - 489	2	-	-	-	-	2
510 - 519	-	-	-	2	-	2
520 - 529	-	-	-	3	-	3
530 - 539	-	-	-	-	2	2
550 - 559	-	-	-	1	-	1
600 - 609	-	-	-	-	8	9
640 - 649	-	1	-	-	-	1
Total vessels	111	243	221	299	373	2,047
Total gross tonnage . . .	5,763	11,196	11,301	17,723	27,800	111,441
Average	52	46	51	59	75	54



The Coral Seas (67 gross tons, 62 feet long, 333 horsepower) was built in 1966 for Charles J. Kiesel and Hilbert J. Kiesel, Fort Myer, Fla. This vessel is typical of the new wooden hull vessels constructed for shrimp fishing.

PACIFIC COAST PORTS

VESSELS DOCUMENTED AS FISHING CRAFT, 1957-66

TONNAGE DISTRIBUTION

Gross tonnage	1957	1958	1959	1960	1961
	<u>Number</u>	<u>Number</u>	<u>Number</u>	<u>Number</u>	<u>Number</u>
5 - 9	28	44	27	45	44
10 - 19	92	87	88	77	49
20 - 29	15	14	12	18	11
30 - 39	4	7	9	10	10
40 - 49	9	2	5	3	10
50 - 59	2	4	-	1	6
60 - 69	-	-	-	-	1
70 - 79	-	-	-	-	2
80 - 89	-	-	-	1	-
100 - 109	1	-	-	-	-
130 - 139	-	1	-	-	1
140 - 149	1	-	1	-	-
160 - 169	1	-	-	-	-
180 - 189	-	-	-	-	1
190 - 199	-	-	1	1	1
230 - 239	-	-	-	-	1
260 - 269	1	1	-	-	-
290 - 299	-	-	-	2	1
330 - 339	-	-	-	1	-
340 - 349	-	-	-	1	-
360 - 369	-	-	-	1	2
370 - 379	1	3	1	-	-
480 - 489	-	-	-	-	1
530 - 539	-	-	1	-	-
540 - 549	-	-	-	-	1
560 - 569	-	-	-	-	1
570 - 579	-	-	-	-	1
680 - 689	1	-	-	-	-
770 - 779	-	-	-	-	1
810 - 819	-	-	-	-	2
Total vessels	156	163	145	161	147
Total gross tonnage . . .	4,135	3,922	3,410	4,233	8,911
Average . . .	27	24	24	26	61

Gross tonnage	1962	1963	1964	1965	1966	Total
	<u>Number</u>	<u>Number</u>	<u>Number</u>	<u>Number</u>	<u>Number</u>	<u>Number</u>
5 - 9	15	21	16	30	49	319
10 - 19	76	80	58	76	91	774
20 - 29	10	29	24	23	21	177
30 - 39	11	9	17	6	10	93
40 - 49	7	9	11	11	8	75
50 - 59	3	5	9	7	7	44
60 - 69	1	-	1	4	2	9
70 - 79	-	1	-	3	2	8
80 - 89	1	-	-	-	-	2
90 - 99	1	-	1	1	1	4
100 - 109	-	1	-	-	-	2
130 - 139	1	-	-	1	1	5
140 - 149	-	-	-	-	2	4
160 - 169	-	1	1	-	1	4
170 - 179	-	-	-	-	2	2
180 - 189	-	-	-	1	-	2

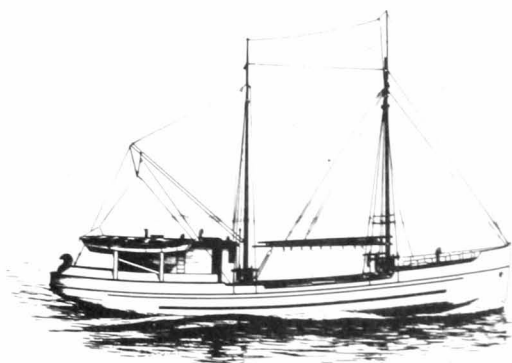
(Continued on next page)

PACIFIC COAST PORTS

VESSELS DOCUMENTED AS FISHING CRAFT, 1957-66

TONNAGE DISTRIBUTION - Continued

Gross tonnage	1962	1963	1964	1965	1966	Total
	<u>Number</u>	<u>Number</u>	<u>Number</u>	<u>Number</u>	<u>Number</u>	<u>Number</u>
190 - 199.	-	-	-	1	1	5
210 - 219.	-	-	-	1	-	1
220 - 229.	1	1	-	-	-	2
230 - 239.	-	-	-	-	-	1
240 - 249.	-	1	-	-	-	1
260 - 269.	-	-	-	1	1	4
270 - 279.	-	-	-	1	-	1
290 - 299.	-	1	-	-	1	5
300 - 309.	-	-	-	1	-	1
310 - 319.	-	-	-	1	-	1
320 - 329.	-	-	-	1	-	1
330 - 339.	-	-	-	1	-	2
340 - 349.	1	-	-	-	1	3
360 - 369.	-	-	1	-	-	4
370 - 379.	-	-	-	-	-	5
420 - 429.	-	-	-	1	-	1
430 - 439.	-	-	1	1	-	2
480 - 489.	-	-	-	-	-	1
490 - 499.	-	-	1	-	-	1
530 - 539.	-	-	-	-	-	1
540 - 549.	-	-	-	-	-	1
550 - 559.	1	-	-	-	-	1
560 - 569.	-	-	-	-	-	1
570 - 579.	-	-	-	-	-	1
590 - 599.	-	-	-	1	-	1
680 - 689.	-	-	-	-	-	1
720 - 729.	-	-	-	1	-	1
730 - 739.	-	-	-	-	1	1
770 - 779.	-	-	-	-	-	1
810 - 819.	-	-	-	-	-	2
Total vessels	129	159	141	175	202	1,578
Total gross tonnage	3,699	3,948	4,597	8,099	6,239	51,193
Average	29	25	33	46	31	32



HALIBUT SCHOONER

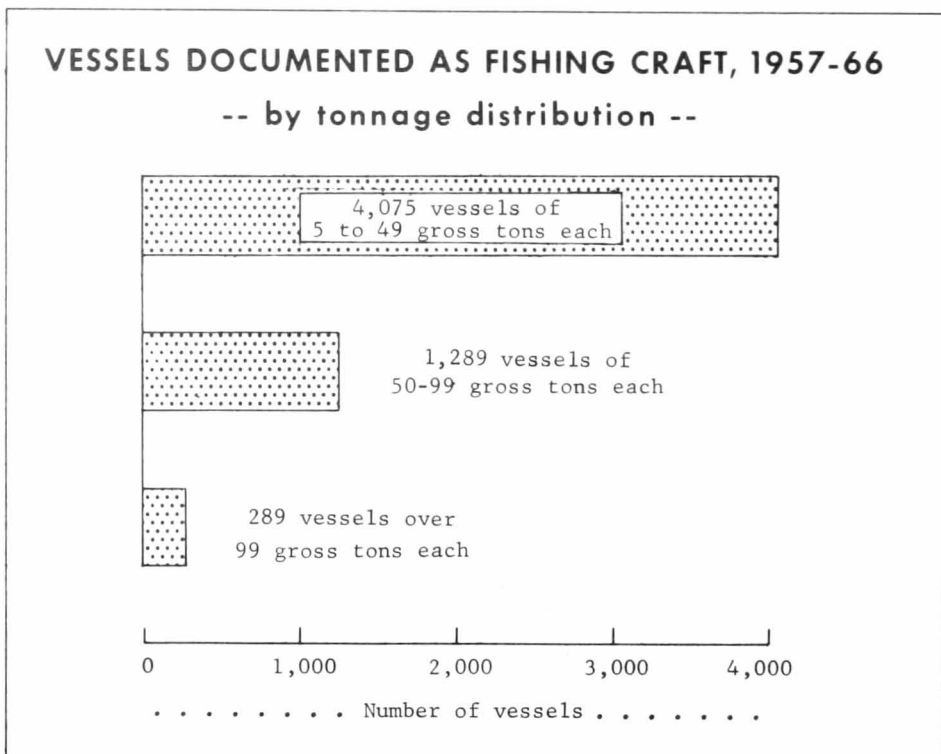
GREAT LAKES PORTS

VESSELS DOCUMENTED AS FISHING CRAFT, 1957-66

TONNAGE DISTRIBUTION

Gross tonnage	1957	1958	1959	1960	1961
	<u>Number</u>	<u>Number</u>	<u>Number</u>	<u>Number</u>	<u>Number</u>
5 - 9	-	1	2	4	3
10 - 19	4	5	3	9	8
20 - 29	1	1	1	4	1
30 - 39	-	2	-	1	-
40 - 49	-	-	1	-	-
50 - 59	1	1	-	-	-
Total vessels	6	10	7	18	12
Total gross tonnage	134	224	127	283	140
Average	22	22	18	16	12

Gross tonnage	1962	1963	1964	1965	1966	Total
	<u>Number</u>	<u>Number</u>	<u>Number</u>	<u>Number</u>	<u>Number</u>	<u>Number</u>
5 - 9	-	1	-	-	-	11
10 - 19	2	1	3	1	4	40
20 - 29	-	1	-	1	-	10
30 - 39	-	-	1	-	-	4
40 - 49	-	1	-	-	-	2
50 - 59	-	-	-	-	-	2
140 - 149	-	-	-	-	1	1
160 - 169	-	-	-	-	1	1
210 - 219	-	-	-	1	-	1
230 - 239	1	1	-	-	-	2
Total vessels	3	5	4	3	6	74
Total gross tonnage	272	326	77	252	361	2,196
Average	91	65	19	84	60	30



HAWAII PORTS

VESSELS DOCUMENTED AS FISHING CRAFT, 1957-66

TONNAGE DISTRIBUTION

Gross tonnage	1957	1958	1959	1960	1961
	<u>Number</u>	<u>Number</u>	<u>Number</u>	<u>Number</u>	<u>Number</u>
5 - 9	1	-	-	-	-
10 - 19	-	-	1	-	-
50 - 59	-	1	-	-	-
Total vessels	1	1	1	-	-
Total gross tonnage	8	54	13	-	-
Average	8	54	13	-	-

Gross tonnage	1962	1963	1964	1965	1966	Total
	<u>Number</u>	<u>Number</u>	<u>Number</u>	<u>Number</u>	<u>Number</u>	<u>Number</u>
5 - 9	-	-	-	-	-	1
10 - 19	-	-	2	-	2	5
50 - 59	-	-	-	-	-	1
Total vessels	-	-	2	-	2	7
Total gross tonnage	-	-	30	-	27	132
Average	-	-	15	-	14	19

OTHER PORTS

VESSELS DOCUMENTED AS FISHING CRAFT, 1957-66

TONNAGE DISTRIBUTION

Gross tonnage	1957	1958	1959	1960	1961
	<u>Number</u>	<u>Number</u>	<u>Number</u>	<u>Number</u>	<u>Number</u>
5 - 9	-	1	-	-	1
10 - 19	1	-	-	-	1
Total vessels	1	1	-	-	2
Total Gross tonnage	16	6	-	-	21
Average	16	6	-	-	10

Gross tonnage	1962	1963	1964	1965	1966	Total
	<u>Number</u>	<u>Number</u>	<u>Number</u>	<u>Number</u>	<u>Number</u>	<u>Number</u>
5 - 9	-	-	-	-	-	2
10 - 19	-	-	-	1	-	3
40 - 49	-	-	1	-	-	1
380 - 389	-	-	-	-	1	1
770 - 779	1	-	-	-	-	1
790 - 799	-	1	-	-	-	1
800 - 809	-	1	1	-	-	2
850 - 859	1	-	-	-	-	1
Total vessels	2	2	2	1	1	12
Total gross tonnage	1,629	1,597	853	12	386	4,520
Average	814	798	426	12	386	377

VESSELS DOCUMENTED AS FISHING CRAFT, 1957-66

TONNAGE DISTRIBUTION BY REGIONS

Gross tonnage	New England	Middle Atlantic	Chesapeake	South Atlantic	Gulf
	Number	Number	Number	Number	Number
5 - 9	66	19	578	51	207
10 - 19	90	38	140	112	446
20 - 29	17	12	22	76	143
30 - 39	11	6	3	89	148
40 - 49	4	20	1	135	124
50 - 59	3	5	1	53	147
60 - 69	9	9	-	68	312
70 - 79	8	11	-	79	176
80 - 89	5	3	-	9	99
90 - 99	8	5	-	64	145
100 - 109	3	1	-	4	22
110 - 119	12	2	2	2	9
120 - 129	1	-	1	3	9
130 - 139	8	1	-	1	4
140 - 149	2	-	-	-	10
150 - 159	6	-	-	-	-
160 - 169	4	1	-	-	1
170 - 179	4	-	-	-	1
180 - 189	3	-	-	-	-
190 - 199	2	1	1	3	3
200 - 209	-	-	1	-	-
210 - 219	-	-	-	1	1
220 - 229	-	-	-	-	1
230 - 239	-	2	-	-	2
240 - 249	-	-	1	-	-
250 - 259	-	2	4	1	1
260 - 269	-	1	2	-	1
270 - 279	1	-	-	-	-
290 - 299	1	-	-	-	1
300 - 309	-	-	-	-	1
310 - 319	-	1	-	-	1
320 - 329	-	-	-	-	1
360 - 369	-	-	-	-	3
370 - 379	-	2	-	-	-
380 - 389	-	-	-	-	1
410 - 419	-	-	-	-	1
420 - 429	-	-	-	1	-
440 - 449	2	-	-	-	-
450 - 459	1	-	1	-	-
460 - 469	-	-	-	-	1
470 - 479	-	-	-	-	5
480 - 489	-	-	-	-	2
490 - 499	1	-	-	-	-
510 - 519	-	-	-	-	2
520 - 529	-	1	-	-	3
530 - 539	-	-	1	-	2
540 - 549	-	1	1	-	-
550 - 559	-	-	-	-	1
570 - 579	-	-	1	-	-
580 - 589	-	1	1	-	-
590 - 599	-	-	1	-	-
600 - 609	-	-	-	-	9
610 - 619	-	1	-	-	-
640 - 649	-	1	-	-	1
750 - 759	-	-	1	-	-
Total number	272	147	764	752	2,047
Total tons	13,877	10,566	13,083	35,528	120,441
Average	51	72	17	47	59

(Continued on next page)

VESSELS DOCUMENTED AS FISHING CRAFT, 1957-66

TONNAGE DISTRIBUTION BY REGIONS - Continued

Gross tonnage	Pacific	Great Lakes	Hawaii	Other	Total
	<u>Number</u>	<u>Number</u>	<u>Number</u>	<u>Number</u>	<u>Number</u>
5 - 9.	319	11	1	2	1,254
10 - 19.	774	40	5	3	1,648
20 - 29.	177	10	-	-	457
30 - 39.	93	4	-	-	354
40 - 49.	75	2	-	1	362
50 - 59.	44	2	1	-	256
60 - 69.	9	-	-	-	407
70 - 79.	8	-	-	-	282
80 - 89.	2	-	-	-	118
90 - 99.	4	-	-	-	226
100 - 109.	2	-	-	-	32
110 - 119.	-	-	-	-	27
120 - 129.	-	-	-	-	14
130 - 139.	5	-	-	-	19
140 - 149.	4	1	-	-	17
150 - 159.	-	-	-	-	6
160 - 169.	4	1	-	-	11
170 - 179.	2	-	-	-	7
180 - 189.	2	-	-	-	5
190 - 199.	5	-	-	-	15
200 - 209.	-	-	-	-	1
210 - 219.	1	1	-	-	4
220 - 229.	2	-	-	-	3
230 - 239.	1	2	-	-	7
240 - 249.	1	-	-	-	2
250 - 259.	-	-	-	-	8
260 - 269.	4	-	-	-	8
270 - 279.	1	-	-	-	2
290 - 299.	5	-	-	-	7
300 - 309.	1	-	-	-	2
310 - 319.	1	-	-	-	3
320 - 329.	1	-	-	-	2
330 - 339.	2	-	-	-	2
340 - 349.	3	-	-	-	3
360 - 369.	4	-	-	-	7
370 - 379.	5	-	-	-	7
380 - 389.	-	-	-	1	2
410 - 419.	-	-	-	-	1
420 - 429.	1	-	-	-	2
430 - 439.	2	-	-	-	2
440 - 449.	-	-	-	-	2
450 - 459.	-	-	-	-	2
460 - 469.	-	-	-	-	1
470 - 479.	-	-	-	-	5
480 - 489.	1	-	-	-	3
490 - 499.	1	-	-	-	2
510 - 519.	-	-	-	-	2
520 - 529.	-	-	-	-	4
530 - 539.	1	-	-	-	4
540 - 549.	1	-	-	-	3
550 - 559.	1	-	-	-	2
560 - 569.	1	-	-	-	1
570 - 579.	1	-	-	-	2
580 - 589.	-	-	-	-	2
590 - 599.	1	-	-	-	2
600 - 609.	-	-	-	-	9
610 - 619.	-	-	-	-	1

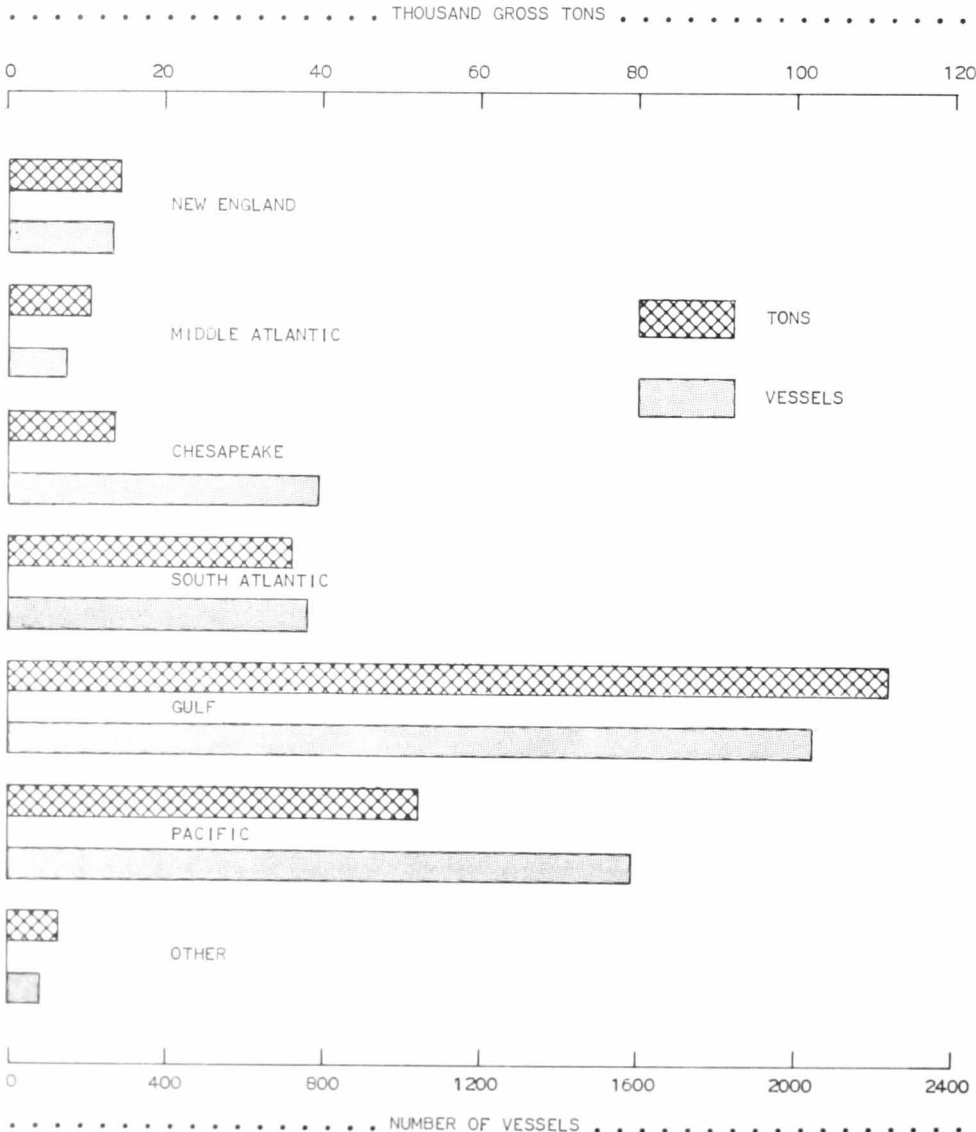
(Continued on next page)

VESSELS DOCUMENTED AS FISHING CRAFT, 1957-66

TONNAGE DISTRIBUTION BY REGIONS - Continued

Gross tonnage	Pacific	Great Lakes	Hawaii	Other	Total
	<u>Number</u>	<u>Number</u>	<u>Number</u>	<u>Number</u>	<u>Number</u>
640 - 649. . . .	-	-	-	-	2
680 - 689. . . .	1	-	-	-	1
720 - 729. . . .	1	-	-	-	1
730 - 739. . . .	1	-	-	-	1
750 - 759. . . .	-	-	-	-	1
770 - 779. . . .	1	-	-	1	2
790 - 799. . . .	-	-	-	1	1
800 - 809. . . .	-	-	-	2	2
810 - 819. . . .	2	-	-	-	2
850 - 859. . . .	-	-	-	1	1
Total number.	1,578	74	7	12	5,653
Total tons. . .	51,193	2,196	132	4,520	242,536
Average	32	30	19	377	43

TONNAGE DISTRIBUTION OF VESSELS, 1957-66



VESSELS DOCUMENTED AS FISHING CRAFT, 1957-66

LENGTH DISTRIBUTION BY REGIONS

Length	New England	Middle Atlantic	Chesapeake	South Atlantic	Gulf
<u>Feet</u>	<u>Number</u>	<u>Number</u>	<u>Number</u>	<u>Number</u>	<u>Number</u>
20 - 29. . . .	34	6	12	20	78
30 - 39. . . .	115	38	622	154	498
40 - 49. . . .	30	24	105	142	333
50 - 59. . . .	11	25	4	190	372
60 - 69. . . .	28	29	2	227	668
70 - 79. . . .	20	9	1	11	47
80 - 89. . . .	16	-	-	1	4
90 - 99. . . .	7	-	1	1	1
100 - 109. . . .	4	2	2	3	5
110 - 119. . . .	1	2	-	1	3
120 - 129. . . .	-	5	6	1	1
130 - 139. . . .	3	-	-	-	9
140 - 149. . . .	2	3	1	1	1
150 - 159. . . .	-	-	1	-	7
160 - 169. . . .	-	2	3	-	18
170 - 179. . . .	-	-	2	-	1
190 - 199. . . .	1	2	-	-	1
200 - 209. . . .	-	-	2	-	-
Total vessels	272	147	764	752	2,047
Total length.	13,531	8,640	29,958	38,718	107,686
Average . . .	50	59	39	51	53

Length	Pacific	Great Lakes	Hawaii	Other	Total
<u>Feet</u>	<u>Number</u>	<u>Number</u>	<u>Number</u>	<u>Number</u>	<u>Number</u>
20 - 29. . . .	369	14	-	1	534
30 - 39. . . .	749	45	3	4	2,228
40 - 49. . . .	329	8	3	-	974
50 - 59. . . .	37	2	-	-	641
60 - 69. . . .	17	-	-	1	972
70 - 79. . . .	6	-	1	-	95
80 - 89. . . .	14	2	-	-	37
90 - 99. . . .	5	-	-	-	15
100 - 109. . . .	6	-	-	1	23
110 - 119. . . .	9	3	-	-	19
120 - 129. . . .	11	-	-	-	24
130 - 139. . . .	6	-	-	-	18
140 - 149. . . .	1	-	-	-	9
150 - 159. . . .	10	-	-	3	21
160 - 169. . . .	6	-	-	-	29
170 - 179. . . .	3	-	-	1	7
180 - 189. . . .	-	-	-	1	1
190 - 199. . . .	-	-	-	-	4
200 - 209. . . .	-	-	-	-	2
Total vessels	1,578*	74	7	12	5,653
Total length.	62,609	2,890	305	1,147	265,484
Average . . .	40	39	44	96	47

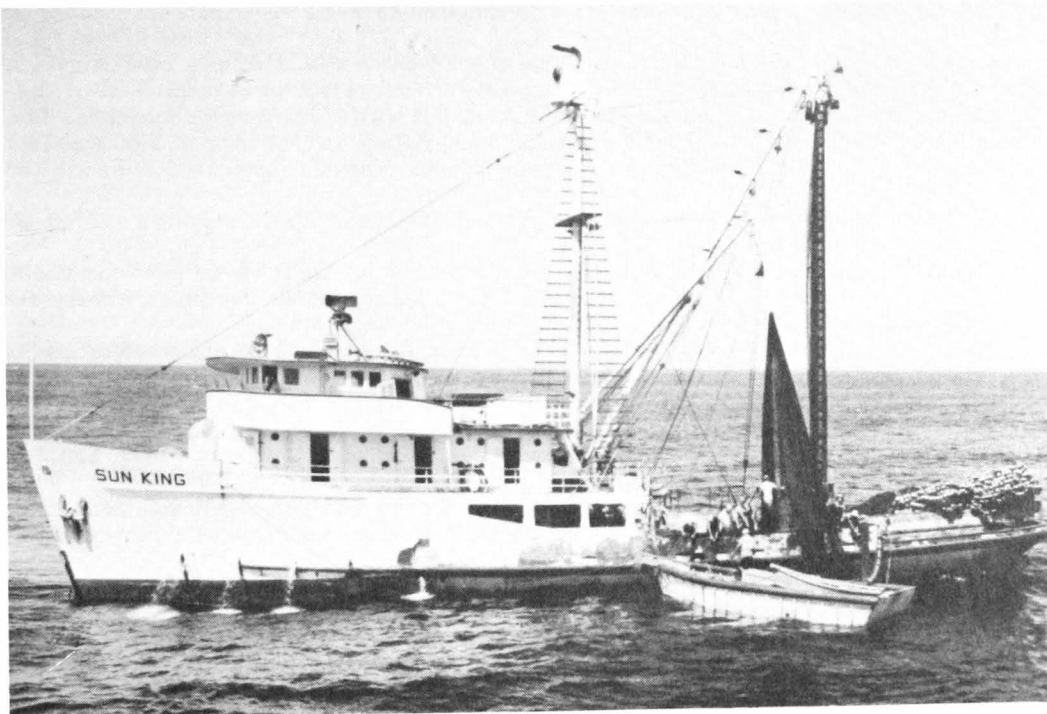
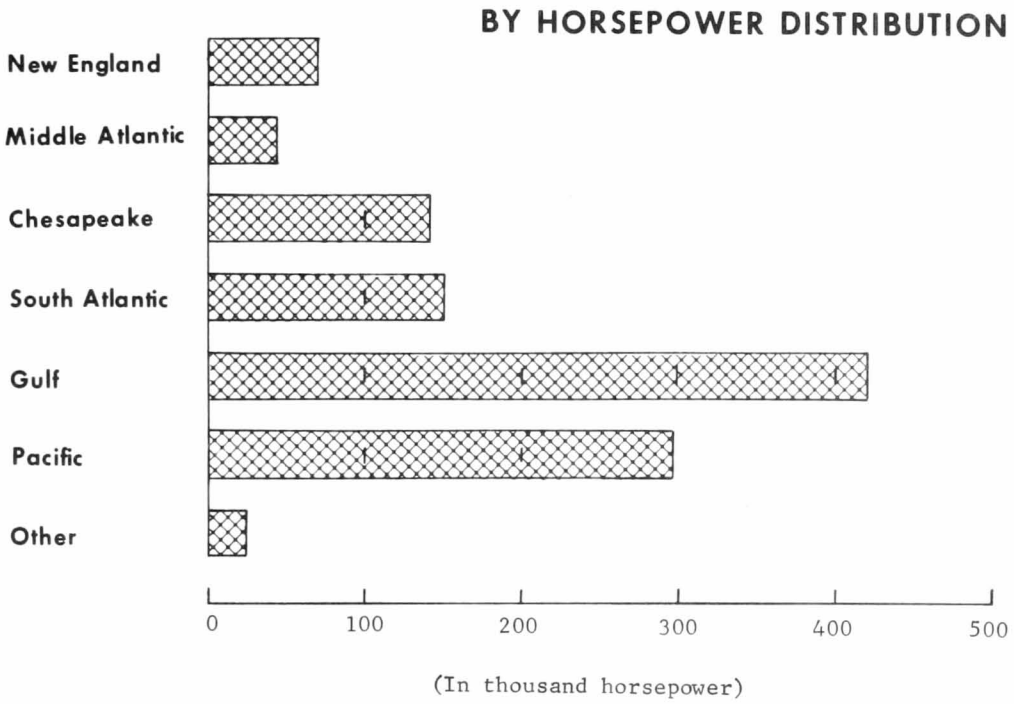
VESSELS DOCUMENTED AS FISHING CRAFT, 1957-66

HORSEPOWER DISTRIBUTION BY REGIONS

Horsepower	New England	Middle Atlantic	Chesapeake	South Atlantic	Gulf
	<u>Number</u>	<u>Number</u>	<u>Number</u>	<u>Number</u>	<u>Number</u>
Under 50.	4	3	16	3	33
50 - 99	40	9	79	42	191
100 - 149	61	14	324	119	346
150 - 199	39	43	112	285	716
200 - 249	30	23	110	139	322
250 - 299	9	6	49	16	40
300 - 349	26	16	29	94	275
350 - 399	12	3	13	26	54
400 - 449	12	1	8	7	5
450 - 499	9	8	6	3	14
500 - 599	11	3	2	12	4
600 - 699	5	5	2	1	5
700 - 799	11	1	-	2	1
800 - 899	-	1	-	-	1
900 - 999	-	3	-	2	9
1000 - 1099	3	6	7	-	5
1100 - 1199	-	-	-	-	3
1200 - 1299	-	2	2	1	3
1300 - 1399	-	-	1	-	1
1400 - 1499	-	-	-	-	3
1500 and over	-	-	4	-	16
Total vessels	272	147	764	752	2,047
Total power	68,595	44,485	142,191	153,908	427,453
Average	252	303	186	205	209

Horsepower	Pacific	Great Lakes	Hawaii	Other	Total
	<u>Number</u>	<u>Number</u>	<u>Number</u>	<u>Number</u>	<u>Number</u>
Under 50.	60	3	-	1/ 1	123
50 - 99	227	17	-	1	606
100 - 149	458	24	2	2	1,350
150 - 199	399	14	1	-	1,609
200 - 249	196	5	4	2	831
250 - 299	86	2	-	-	208
300 - 349	61	1	-	-	502
350 - 399	11	-	-	-	119
400 - 449	11	1	-	-	45
450 - 499	14	-	-	-	54
500 - 599	7	2	-	-	41
600 - 699	9	-	-	-	27
700 - 799	2	2	-	1	20
800 - 899	4	3	-	-	9
900 - 999	6	-	-	-	20
1000 - 1099	12	-	-	-	33
1100 - 1199	-	-	-	-	3
1200 - 1299	-	-	-	-	8
1300 - 1399	3	-	-	-	5
1400 - 1499	-	-	-	1	4
1500 and over	12	-	-	4	36
Total vessels	1,578	74	7	12	5,653
Total power	299,428	13,989	1,305	9,502	1,160,856
Average	190	189	186	792	205

VESSELS DOCUMENTED AS FISHING CRAFT, 1957-66



Sun King. This vessel (269 gross tons, 109 net tons, 102 feet long, 500 horsepower) is reported to be the first U.S. vessel to convert successfully to purse seining for tuna. This was an important technological development in fishing that occurred during the period covered by this report.

APPENDIX

The following are excerpts from title 46 and are included to provide the reader with certain definitions used by the U.S. Coast Guard in describing vessels and their physical characteristics.

3.1 General definitions.--For the purpose of this part and part 4 of these regulations--

(a) The word "vessel" includes every description of watercraft or other contrivance used or capable of being used as a means of transportation on water, but does not include aircraft. (1 U.S.C. 3; 19 U.S.C. 1401; 49 U.S.C. 177.)

(b) The term "vessel of the United States" means any vessel documented under the laws of the United States. (46 U.S.C. 911.)

(c) The term "documented" means registered, enrolled and licensed, or licensed under the laws of the United States, whether permanently or temporarily. (46 U.S.C. 911.)

(d) The term "marine document" includes registry, enrollment and license, and license. (46 U.S.C. 911.)

(e) The term "port of documentation" means the home port of a vessel. It does not include a port in which a temporary document is issued. (46 U.S.C. 17, 911, 1011.) . . . etc., etc.

3.2 Vessels entitled to documents.--(a) A vessel of 20 net tons or more may be registered or enrolled and licensed. A vessel of 5 net tons or more but less than 20 net tons may be licensed (except vessels subject to the provisions of paragraph (b) of this section) or registered.

(b) Any vessel of 5 net tons or more which is to be documented for navigating the waters of the northern, northeastern, or northwestern frontiers otherwise than by sea shall be granted a frontier enrollment and license, customs Form 1273, except that a vessel used exclusively as a pleasure vessel on those waters may be granted an enrollment and license as a yacht, customs Form 1290, if entitled to be so documented in accordance with the provisions of section 3.4 of this art. (See sec. 3.40.)

(c) The following classes of vessels are entitled to receive documents under existing laws:

Class 1. Any vessel built in the United States and wholly owned by a citizen. A vessel of this class owned by a corporation which is qualified as a citizen of the United States under the definition contained in section 3.19(a)(4) may be documented for use in the coastwise trade within the limitations specified in the Act of September 2, 1958 (46 U.S.C. 883-1), if it is a non-self-propelled vessel of less than 500 gross tons (see also sec. 3.19(e).)

Class 2. Any vessel purchased from the Maritime Administration or War Shipping Administration by a citizen. (See sec. 3.42)

Class 3. Any vessel built in the United States in whole or in part for the account of one who is not a citizen and then recorded, which thereafter becomes wholly owned by a citizen and has never before been documented. (See sec. 3.47)

Class 4. Any vessel captured by a citizen in a war to which the United States is a party, which has been lawfully condemned as a prize and is wholly owned by a citizen.

Class 5. Any vessel which has been judicially forfeited for a breach of the laws of the United States when wholly owned by a citizen. This includes a foreign-built vessel, but does not include any vessel not otherwise entitled to documents which has been sold under a decree of admiralty for debt or seamen's wages.

Class 6. Any vessel built in the United States and sold by the Govt. to a citizen. A foreign-built vessel bought or chartered by the Government is entitled to documentation if sold to a citizen and the requirements for class 9 are met.

Class 7. Any vessel authorized by special act of Congress to be documented.

Class 8. Any vessel wrecked on a coast of the United States or its possessions or in adjacent waters when purchased by a citizen and repaired in a shipyard in the United States or its possessions, provided it be proved to the satisfaction of the Commissioner, that the repairs put upon such vessel are equal to three times the appraised salvage value of the vessel. The expense of such appraisal shall be borne by the owner of the vessel. If any of the material facts sworn to or represented by the owner, or at his instance, to obtain a document for such vessel is not true, the vessel is liable to forfeiture.

Class 9. Any seagoing vessel, whether steam or sail, wherever built, wholly owned by a citizen. A foreign-built vessel of this class shall engage only in trade with

foreign countries or the islands of Guam, Tutuila, Wake, Midway, or Kingman Reef. It shall not engage in the coastwise trade except as specified in sections 18 and 22, Merchant Marine Act, 1920, as amended, nor in the American fisheries. (See sec. 3.42.)

(d) The appropriate one of the following notations shall be made on the register of any vessel owned by a corporation which is established as a citizen of the United States under the definition contained in section 3.19(a)(3) or section 3.19(b), except when such register is required by any other provision of this part to bear an endorsement prohibiting the vessel from engaging in the coastwise trade:

(1) "Less than 75 percent of the interest in the corporation owning this vessel is owned by citizens of the United States. It shall not engage in the coastwise trade"; or

(2) "75 percent of the interest in the corporation owning this vessel is owned by citizens of the United States. It may engage in the coastwise trade so long as so owned and no longer."

(e) The following notation shall be made on the enrollment and license or license of any non-self-propelled vessel or any self-propelled vessel of less than 500 gross tons owned by a corporation which is established as a citizen of the United States under the definition contained in section 3.19(a)(4): etc., etc.

3.5 Vessels exempt from documentation.--(a) The following classes of vessels are exempt from documentation:

(1) Boats or lighters not masted, or masted but not decked, used in the harbor of any town or city, and not carrying passengers.

(2) Canal boats, barges, or other boats used in whole or in part on canals or on the internal waters of a state, without sail or internal motive power of their own, not engaged in trade with contiguous foreign territory, and not carrying passengers.

(3) Barges or boats without sail or internal motive power of their own plying in whole or in part on inland rivers or lakes of the United States, not engaged in trade with contiguous foreign territory and not carrying passengers.

(4) Vessels plying upon waters which are wholly within the limits of a State and which have no outlet into a river or lake on which commerce with foreign nations or among the States can be carried on.

(5) Vessels of less than 5 net tons.

(b) All other vessels engaged in trade between ports in the United States or engaged in the fisheries, if not registered, shall be enrolled and licensed or licensed, or will be liable to a penalty of \$30 on every arrival, unless the vessel has not been within a customs district since the expiration of the license.

(c) No vessel exempt from documentation under the provisions of paragraph (a)(1), (2), (3), or (5) of this section and owned by a corporation which is a citizen of the United States as defined in section 3.19(a)(4) shall be operated in trade on the navigable waters of the United States unless there is on file with the collector of customs for the district in which the vessel business of the owner is conducted a valid and current certificate under oath on customs Form 1260 as required by section 3.21(f). (Sec. 7, 24 Stat. 81, as amended, 21 Stat. 44, R. S. 4385, 18 Stat. 31, 72 Stat. 1736; 46 U.S.C. 319, 332, 335, 336, 883-1.)

2.4 Register ton.--A register ton is a volume of 100 cubic feet.

2.5 Gross register tonnage.--(a) The gross tonnage referred to in this part is the gross register tonnage; that is, the gross tonnage exclusive of all permissible exempted spaces. Under the provisions of section 2.87(b), a vessel may have two gross tonnages. The higher gross tonnage is applicable when a tonnage mark which is placed and displayed on the side of the vessel is submerged and the lower is applicable when the tonnage mark is not submerged.

(b) Except in the case of a vessel which is measured under the provisions of section 2.80 through 2.100, the gross register tonnage of a vessel shall consist of the sum of the following items:

(1) The cubic capacity below the tonnage deck, excluding exemptible water-ballast spaces within the measurable portion of the vessel;

(2) The cubic capacity of each between-deck space above the tonnage deck;

(3) The cubic capacity of the permanent closed-in spaces on the upper deck available for cargo or stores, or for the accommodation of passengers and/or crew;

(4) All permanent closed-in spaces situated elsewhere available for cargo or stores, or for the accommodation of the crew, or for the charts, except cabins or state-rooms for passengers, constructed entirely above the first deck which is not a deck to the hull;

(5) The excess of hatchways.

(c) The gross tonnage of a vessel measured under the provisions of sections 2.80 through 2.100 shall be determined as provided by section 2.86(a).

2.6 Net register tonnage.--(a) The tonnage of a vessel remaining after the authorized deductions have been made from the gross register tonnage shall be deemed the net register tonnage. Under the provisions of section 2.87(b) a vessel may have two net tonnages. The higher net tonnage is applicable when a tonnage mark which is placed and displayed on the side of the vessel is submerged and the lower is applicable when tonnage mark is not submerged.

(b) In asserting the net tonnage, no space may be deducted unless it has previously been included in the gross tonnage.

2.18 Register length.--(a) The length measured on the tonnage deck, from the fore part of the outer planking (where it is rabbeted) on the side of the stem of wooden vessels, or fore end of lap of outer plating of steel or iron vessels, to the after side of the main sternpost, shall be accounted the vessel's register length.

(b) In the case of screw vessels with no sternpost, take the length to the forward side of the rudder-stock or line of same extended through the deck.

(c) The register length of scows and barges, with a square bow and stern sloping up from the bottom to the deck, and with neither stem nor sternpost, is to be taken on the deck from the extreme point of the hull at the bow to the extreme point of the hull at the stern; that is, the over-all length of the hull, not including guards or rubbingstrakes, is to be considered the register length of such vessel.

3.11 Enrollment and license; coasting trade and fisheries.--(a) When employed in the coasting trade and fisheries, a vessel of 20 net tons or over shall be enrolled and licensed and a vessel of 5 net tons or over but less than 20 net tons shall be licensed, unless such vessel is registered. (See sec. 3.10)

(b) A vessel engaged exclusively in the cod fishery shall be licensed for that fishery. A vessel engaged in whaling shall be licensed for the whale fishery. A vessel engaged in taking fish of any other description shall be licensed for the mackerel fishery. A vessel licensed for the fisheries shall not be deemed to be used in employment for which not licensed solely because it occasionally takes on board on the high seas and transports without a monetary consideration to a port of the United States the catch of another fishing vessel of the United States. A vessel which engages in both the coasting trade and fishing (other than whaling) may be licensed for the "coasting trade and mackerel fishery". A vessel engaged in taking out fishing parties is not a fishing vessel and shall be licensed for the coasting trade unless it tends to proceed to a foreign port, in which case a certificate of registry is required. (See sec. 3.10 of this part. See sec. 3.40 of this part for vessels on the Great Lakes.)

(c) The trade expressed in the body of a document is controlling and may not be limited or expanded by the statement of service in the space provided therefor.

(d) An enrolled and licensed vessel may engage in trade with the Canal Zone or Guantanamo Bay Naval Station. (R. S. 4311, as amended, 4321, as amended, sec. 7, 24 Stat. 81, as amended, 75 Stat. 410; 46 U.S.C. 251, 263, 319, 404.)

3.12 Builder's certificates.--(a) In order to document a vessel of class 1, 2, 6, or 7, built in the United States and not before documented, the owner shall produce to the collector a certificate on customs Form 1261 from the builder under whose direction the vessel was built, that she was so built, stating the place and time of building, the person or persons for whom built, number of decks and masts, length, breadth, depth, tonnage, and such other particulars as are usually descriptive of a vessel. This certificate shall be sufficient to authorize the removal of a new vessel, if in ballast only, from the district where she was built to another district in the same or an adjoining State where the owner or owners actually reside.

(b) When for any cause it is found impractical to obtain the certificate of the builder, other competent evidence establishing the particulars and facts required to be certified by him may be accepted with the approval of the Commissioner of Customs.

(c) The place of build is where the hull was built. The time of build is the year of completion. Both shall appear in all marine documents. (R. S. 4147; 46 U.S.C. 24.)