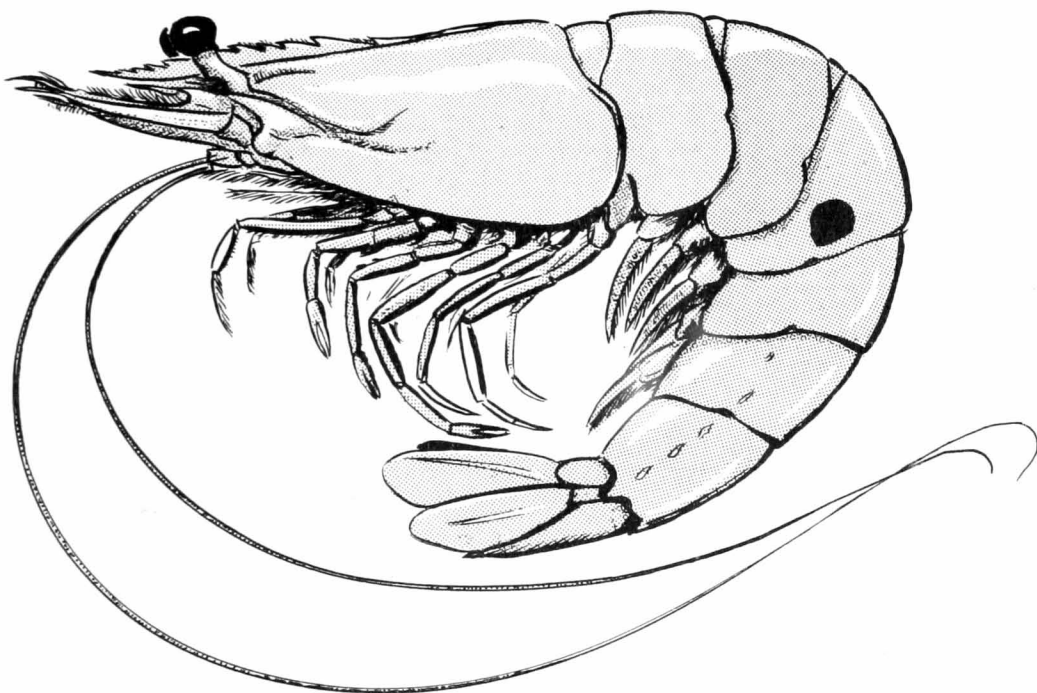


EXPLORATORY SHRIMP FISHING IN THE GULF OF MEXICO

1950 - 51



FISHERY LEAFLET 406

FISH AND WILDLIFE SERVICE

United States Department of the Interior



Fishery Leaflet 406

Washington 25, D. C.

September 1952

EXPLORATORY SHRIMP FISHING IN THE GULF OF MEXICO, 1950-51

By Stewart Springer* and Harvey R. Bullis**

Contents

	Page
Introduction.....	1
Geographical and Seasonal Distribution of Exploration.....	3
Gear Used.....	4
Dragging Data and Shrimp Fishing Methods.....	5
Some Observations on the <u>Oregon</u> Fishing Log, 1950-51.....	6
White Shrimp.....	7
Brown-grooved Shrimp.....	10
Pink-grooved Shrimp.....	10
Red Shrimp.....	11
Summary.....	11
M/V <u>Oregon</u> Fishing Log, 1950-51.....	13

Illustrations

Figure	Page
1 M/V <u>Oregon</u> , Exploratory Fishing Vessel Operated in the Gulf of Mexico by the Service's Branch of Commercial Fisheries.....	1
2 Distribution of 1950-51 Trawling Operations by the <u>Oregon</u>	2
3 Two Large Loggerhead Sponges from <u>Oregon</u> Station 232. This Species is Common All Along the Florida West Coast and Constitutes One of the Major Trawling Hazards in That Area.....	3
4 Echo Depth Recorder Charts Showing Bottom Type and Contour. Soundings Are in Feet.....	6
5 Echo Depth Recorder Charts Showing Bottom Type and Contour. Soundings Are in Feet.....	7
6 Dumping the Catch on the Deck of the <u>Oregon</u> During Night Fishing.....	7

*CHIEF, GULF FISHERIES EXPLORATION AND GEAR RESEARCH,

**FISHERY METHODS AND EQUIPMENT SPECIALIST,

{ EXPLORATORY FISHING AND GEAR DEVELOPMENT SECTION,
BRANCH OF COMMERCIAL FISHERIES, U.S. FISH AND WILDLIFE SERVICE, PASCAGOULA, MISSISSIPPI.

Illustrations (Con't)

Figure		Page
7	Sorting, weighing, Counting, and Recording the Catch Aboard the <u>Oregon</u>	8
8	Composite Chart Showing Kinds of Marketable-Size Shrimp Most Common to Each Gulf Area. The Ranges of Some Species Overlap, and Commercially-important Quantities Do Not Occur Throughout the Range of Any of These Species.....	9
9	A Large Catch of Pink-grooved Shrimp, Fish, and Bottom Trash From the Dry Tortugas Grounds.....	11

INTRODUCTION

Shrimp exploration received the major emphasis in activities of the exploratory fishing vessel Oregon, operated by the Branch of Commercial Fisheries, U. S. Fish and Wildlife Service, since July 1950. The purpose of the explorations during the latter half of 1950 and in 1951 was to locate concentrations of marketable shrimp outside the range of the existing fishery, to outline the extent of good shrimp-fishing areas and the seasons of best fishing in these areas, and to adapt or develop practical gear designs and methods to meet any new conditions found. The emphasis on shrimp exploration and shrimp-gear studies followed the recommendations of the Gulf States Marine Fisheries Commission, but secondary projects also were undertaken and will be reported separately.

Many considerations influenced the plans of the operation. The first objective was to explore as wide an area of the Gulf of Mexico as possible and to work intensively only in the areas that seemed to offer promising possibilities for immediate commercial exploitation. During this period of preliminary coverage it was economical and expedient to obtain as much exploratory data as possible not only on shrimp but on other potential fishery resources as well. This is consistent with the long-range program for investigation of the fishery



FIG. 1 - M/V OREGON, EXPLORATORY FISHING VESSEL OPERATED IN THE GULF OF MEXICO BY THE SERVICE'S BRANCH OF COMMERCIAL FISHERIES.

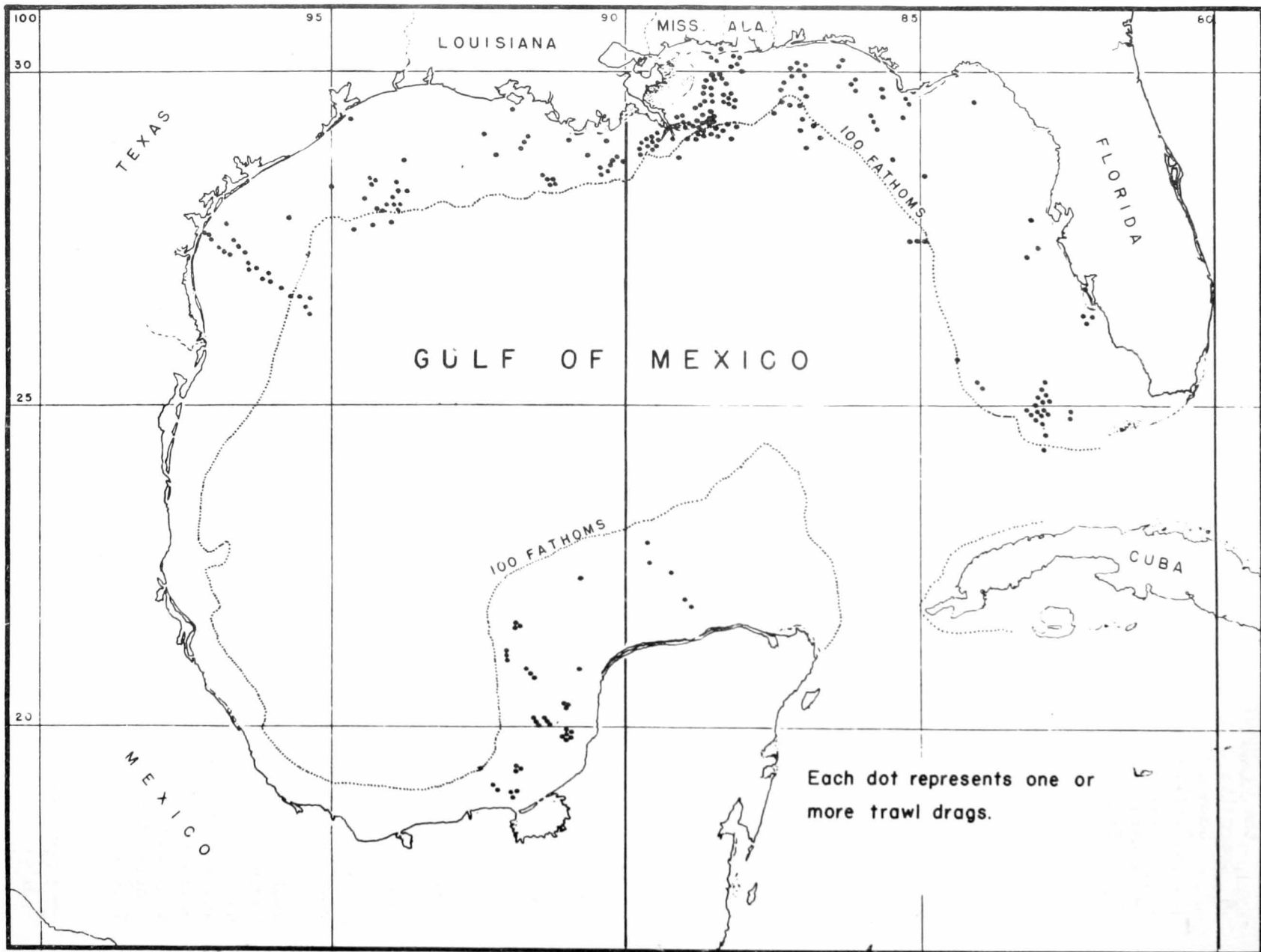


FIG. 2 - DISTRIBUTION OF 1950-51 TRAWLING OPERATIONS BY THE OREGON.

resources of the Gulf. An important part of the results of the explorations is the basic information assembled, which will facilitate planning future effective exploratory work.^{1/} Snapper-fishing spots have been included because, in general, these are rocky or coral-covered locations where shrimp trawling would probably result in lost gear. These locations should be avoided by shrimp trawlers. On the other hand, snapper-fishing spots frequently mark the location of "lumps" or small seamounts where repeated observations have shown that surface-feeding fish, such as little tuna, congregate, and which consequently might be expected to be better than average places for trolling or gill-netting surface fish.

A brief account of recent developments in the Gulf of Mexico shrimp fishery and a descriptive summary of initial Gulf explorations by the Oregon have been given by Springer (1951a and 1951b). The purpose of this report is to outline the progress made in shrimp exploration and summarize the data obtained. Separate reports will be made of explorations for other fishery resources.

GEOGRAPHICAL AND SEASONAL DISTRIBUTION OF EXPLORATION

The 1950-51 explorations covered the major areas of potential shrimp-trawling bottom in the Gulf. However, the drags were widely separated both as to geographical position and season. Unworked grounds near the principal regions of



FIG. 3 - TWO LARGE LOGGERHEAD SPONGES FROM OREGON STATION 232. THIS SPECIES IS COMMON ALL ALONG THE FLORIDA WEST COAST AND CONSTITUTES ONE OF THE MAJOR TRAWLING HAZARDS IN THAT AREA. ^{1/}AN ILLUSTRATION OF THE WAY IN WHICH INFORMATION COLLECTED DURING ONE TYPE OF FISHING CAN BE USED IN ANOTHER IS CONTAINED IN THE FISHING LOG (TABLE 1). THE FISHING LOG (TABLE 1) IS NOT INCLUDED HERE, BUT APPEARS AS AN APPENDIX TO THE FISHERY LEAFLET (NO. 406) ISSUE OF THIS REPORT.

shrimp production received special attention. Much of the available time was devoted to work near (but outside) the known shrimp grounds off the mouth of the Mississippi River, off the Texas coast, near Dry Tortugas, and in the Gulf of Campeche. Although the distribution of exploratory drags was extensive (see fig. 2), large areas received scanty coverage. In general, these areas are difficult to work either because they are remote from fishing ports or because the nature of the bottom causes excessive loss to conventional trawling gear. The use of special gear, which has now been developed, is expected to facilitate the exploration of rough bottom during 1952. This gear consists chiefly of small, inexpensive, and expendable nets and dredges to be used in connection with bottom samplers for the first examination of unknown bottoms. It is expected that adaptations of mud ropes, rollers, bottomless nets, and other devices to full-size commercial gear can then be tried in selected areas without excessive loss.

Drags were made by the Oregon in depths up to 500 fathoms, but the greatest number were made in the 20- to 60-fathom range. A large number of drags were made at night because catches of grooved shrimp are generally larger at night. Cruise plans for exploration in 1952 call for fishing in various parts of the Gulf at times that should give more information on seasonal changes in conditions.

GEAR USED

Several types of trawls were used by the Oregon in the shrimp-exploration program, and most of the commonly accepted designs were tried on a variety of bottom conditions, employing many minor modifications in rigging. Some of these trawls are described by Bullis (1951). Trawls were obtained from various trawl makers in the Gulf area or were built by the netmen aboard the vessel. Standard 8-foot to 12-foot try nets were used at the beginning of the exploratory-fishing program, but since the relationship of results with the try nets and with the larger nets seemed to be particularly difficult to establish, the try nets were subsequently used only to secure unrecorded additional information while working with larger nets.

A 40-foot flat trawl was used chiefly for first trials on unknown bottom. This net has been extremely valuable both for its simple construction and good fishing ability. From time to time other styles of nets were reduced in size to 40-foot models and used for this purpose, with somewhat less desirable results. A 40-foot balloon trawl was found to consistently "choke-off" at the throat, building up the catch in the body of the trawl and then tearing through the lighter webbing. By changing body tapers and wing designs this could be corrected; but it was observed that as the design improved it rapidly lost its identity as a balloon trawl and assumed many of the differentiating characteristics of the flat trawl. This same tendency has been noted in experimental designs which have been tried throughout the past year.

When good shrimp-fishing grounds were located and fairly good bottom was encountered, drags were made with the larger, standard trawls. A 100-foot flat trawl, a 74-foot balloon trawl, and a 65-foot wedge-shaped flat trawl were used in this way after August 1950. The catches from this gear gave a fairly accurate picture of what commercial boats might be expected to catch if fishing on the grounds. The different-style trawls were used to see if there was a noticeable difference in catch rate and to find out if one type was more suited to work a particular kind of bottom. Attempts to select the best "catcher" have been inconclusive. In the areas of very good fishing, such as the Dry Tortugas grounds, there was no appreciable difference between the 74-foot balloon trawl and the 100-foot flat trawl in pounds of shrimp per hour. The balloon trawl caught more trash fish and less bottom "trash," such as shells and sponge, and the catch of shrimp was generally in better condition than catches taken by the flat trawl.

Comparisons of the effectiveness of nets are very difficult to make even when most of the factors of difference can be determined. For example, several comparative pairs of drags were made in the same place, using a 40-foot flat trawl and a 100-foot flat trawl. The 40-foot net caught approximately two-fifths as much material in 30 minutes as the 100-foot net caught in 30 minutes. But since the vessel traveled 2 nautical miles dragging the 40-foot trawl for 30 minutes and only $1\frac{1}{4}$ miles dragging the 100-foot trawl for 30 minutes, the convenient relation established between the two sizes appears to be coincidental. Since 4 knots is the slowest practical speed for the Oregon with a 40-foot net, a reduction in speed could be made only with an additional drag against the vessel. Operating two 40-foot nets at the same time from opposite sides of the vessel was tried, and it worked satisfactorily. Comparison of the effectiveness of nets, however, have not been made in sufficient number to permit evaluation of the various rigs. Each rig combination (net, doors, cables, and boat) not only has an optimum working speed but is selective to a considerable degree. Trawling is often prevented by such obstacles as sharp coral, heavy growths of loggerhead sponges and shell, and soft mud which quickly bogs the trawl and doors. Even exploratory sampling was not feasible over coral and loggerhead-sponge bottom because of gear losses. Several variations of a bottomless trawl were made for the loggerhead-sponge area off the Florida coast and in first tests the new design eliminated up to 95 percent of the sponges. A series of comparative drags made in the Campeche area in August 1951 showed that the bottomless net caught slightly fewer shrimp, but the catch was nearly free of bottom "trash." Gear experimentation will be continued in 1952.

DRAGGING DATA AND SHRIMP-FISHING METHODS

At the start of the explorations for shrimp, a standardized procedure was set up for recording data. A fishing log has been extracted from these data to give a summary of each major shrimp-dragging operation. As the work progressed, new problems appeared requiring more or different information about the results of the drags. A complete tabulation of data is beyond the scope of this report, but pertinent information will be summarized in a final report.

Charts made by recording echo depth sounders illustrate some of the bottom conditions encountered by shrimp trawlers. Charts A and B in figure 4 show extremes in irregularity of soft-mud bottom near the mouth of the Mississippi River. Large catches of white shrimp are made by the shrimp fleet in the vicinity of these mud lumps, but a great amount of gear is lost by bogging in attempts to make drags in the areas where the irregularities are most pronounced. Charts C and D in figure 4 are characteristic of the "edge" where slopes of the continental shelf are steep. Frequently the "edge" is rocky, and the pinnacle (station 174, shown in chart C, figure 4) is coral-covered and a fair location for red-snapper fishing. A drag made over relatively smooth bottom with a steep slope (shown in chart D, figure 4) was unsuccessful because the net was overturned and twisted, evidently by the irregular currents in the vicinity. A drag made in a similar situation nearby loaded up with shell and heart urchins, resulting in damage to the net. Very often the irregularities in the bottom are noticed on the depth-sounder chart in time to save gear from damage by obstructions. Chart A of figure 5 shows an obstruction at the right of the center which was not noticed in time, and a part of a trawl was lost at that point (station 145). The differences between good trawling bottom and poor trawling bottom are not always apparent on depth-sounder charts. Chart B in figure 5 shows good trawling bottom while the similar-appearing bottom in chart C was covered with fine spikes of coral, which shredded nets in a very short time. The interference represented by a roundish area just above the bottom line in chart D in figure 5 probably is produced by shrimp or fish. The interpretation of depth-sounder interference patterns requires practice and a

wealth of experience that permits verification of the interpretation by catching the fish or at least by seeing them. In one instance, near Dry Tortugas, the appearance of the depth-sounder chart suggested that the Oregon was running at full speed onto an uncharted shoal, although the sounding lead showed 9 fathoms. Schools of herring-like fishes were seen soon after, but specimens could not be taken. This is as near as we have come to the identification of fish as a cause for depth-sounder interference in the Gulf.

At the beginning of the shrimp exploration little equipment was on hand for a detailed survey of bottom conditions for shrimp and shrimp trawling. Work on this has been started and will be reported in the future.

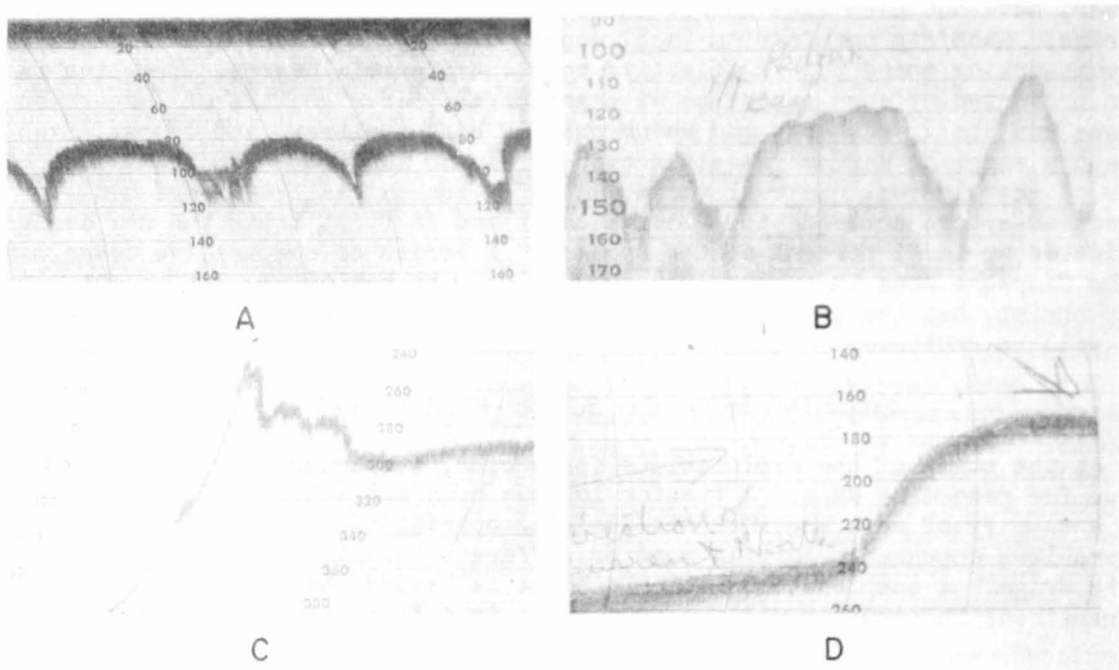


FIG. 4 - ECHO DEPTH RECORDER CHARTS SHOWING BOTTOM TYPE AND CONTOUR. SOUNDINGS ARE IN FEET.

- A - "MUD LUMP" AREA OFF THE MISSISSIPPI DELTA. BOTTOM IS SOFT MUD.
- B - ANOTHER "MUD LUMP" RECORDING IN DEEPER WATER OFF REDFISH BAY.
- C - A BOTTOM SECTION OF THE EDGE AT OREGON STATION 174. THE PINNACLE IS CORAL COVERED AND ROCKY.
- D - AN ABRUPT SLOPE CHARACTERISTIC OF THE "EDGE." ALTHOUGH NOT IN EVIDENCE THERE IS SOME CORAL PRESENT. RED SNAPPERS WERE TAKEN AT THE POINT MARKED BY THE ARROW IN THE UPPER RIGHT CORNER.

An important part of the exploratory-fishing data has been secured through the assistance of cooperators from institutions interested in the general program of Gulf fisheries research. The value of the cooperative study may be expected to be more apparent in subsequent and final reports where results of different lines of investigation are fitted together.

SOME OBSERVATIONS ON THE OREGON FISHING LOG, 1950-51

Summaries of information taken from the fishing logs of the Oregon will be given in a final report on shrimp exploration to be published later.

Most of the drags made had some kind of penaeid shrimp in the catch, but only species of commercial interest were shown in the log. Nineteen species were

identified from Oregon collections by M. D. Burkenroad, Institute of Marine Science of the University of Texas, or by F. A. Chace, Jr., Curator of Marine

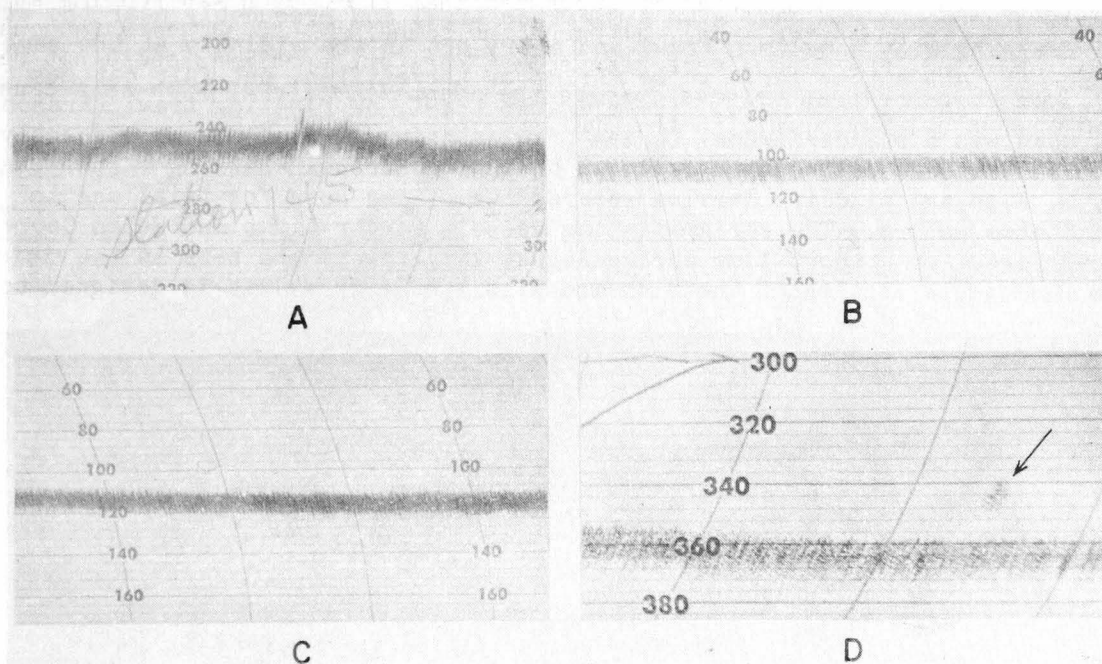


FIG. 5 - ECHO DEPTH RECORDER CHARTS SHOWING BOTTOM TYPE AND CONTOUR. SOUNDINGS ARE IN FEET.

- A - OREGON STATION 145. THE OBSTRUCTION AT RIGHT OF CENTER TORE OFF THE LEAD LINE AND TRAWL BODY. BOTTOM IS HARD MUD AND SAND.
- B - OREGON STATION 291. THIS SHOWS GOOD TRAWLING CONDITIONS OF SMOOTH BOTTOM AND SLIGHT SLOPE. BOTTOM IS GRAY MUD.
- C - OREGON STATION 223. HERE THE BOTTOM LOOKS AS GOOD AS IT DOES IN B BUT IS COVERED WITH SMALL FINGERS OF LIVING CORAL. TRAWLING IN THIS AREA WITH CONVENTIONAL SHRIMPING GEAR IS EXTREMELY HAZARDOUS.
- D - OREGON STATION 331. A RECORDING SHOWING AN INTERFERENCE SPOT, PROBABLY A SCHOOL OF FISH OR SHRIMP CLOSE TO THE BOTTOM.

Invertebrates, United States National Museum. It is probable that additional species will be identified from collections already made or from subsequent collections.

WHITE SHRIMP: The white shrimp, *Penaeus setiferus*, is usually taken by the fishery inside the 20-fathom curve by trawling during daylight hours. Because of its inshore range, the species has been of only incidental interest in the exploration. The three instances appearing in the fishing log of the capture of specimens of the white shrimp outside their usual depth range (43 fathoms, stations 340 and 342) or geographical range (station 237 near Dry Tortugas) are probably not indications of the existence of stocks of commercial interest in the vicinity.



FIG. 6 - DUMPING THE CATCH ON THE DECK OF THE OREGON DURING NIGHT FISHING.

A catch of $4\frac{1}{2}$ pounds of large white shrimp was made at night on August 15, 1951, in $7\frac{1}{2}$ fathoms off Chandeleur Islands, Louisiana, along with several hundred pounds of large harvestfish (Peprilus alepidotus) and butterfish (Poronotus triacanthus). The catch was made with a midwater trawl and presumably near the surface. Dragging with a balloon trawl and a try net in the vicinity at the same time did not take either large white shrimp or harvestfish, but fair catches of brown-grooved shrimp were made. The midwater trawl, or floating trawl (Krason 1949), used was a standard-model Larsen trawl obtained from Denmark. Recently this trawl has been used successfully in the north European herring fishery, and the U. S. Fish and Wildlife Service secured two of the nets for trial use in United States waters. The shrimp-fishing vessels Harbor Light and Helen Cooper were chartered for a short time during August 1951 to try the nets in the vicinity of the Pascagoula station of the Fish and Wildlife Service. It is designed to

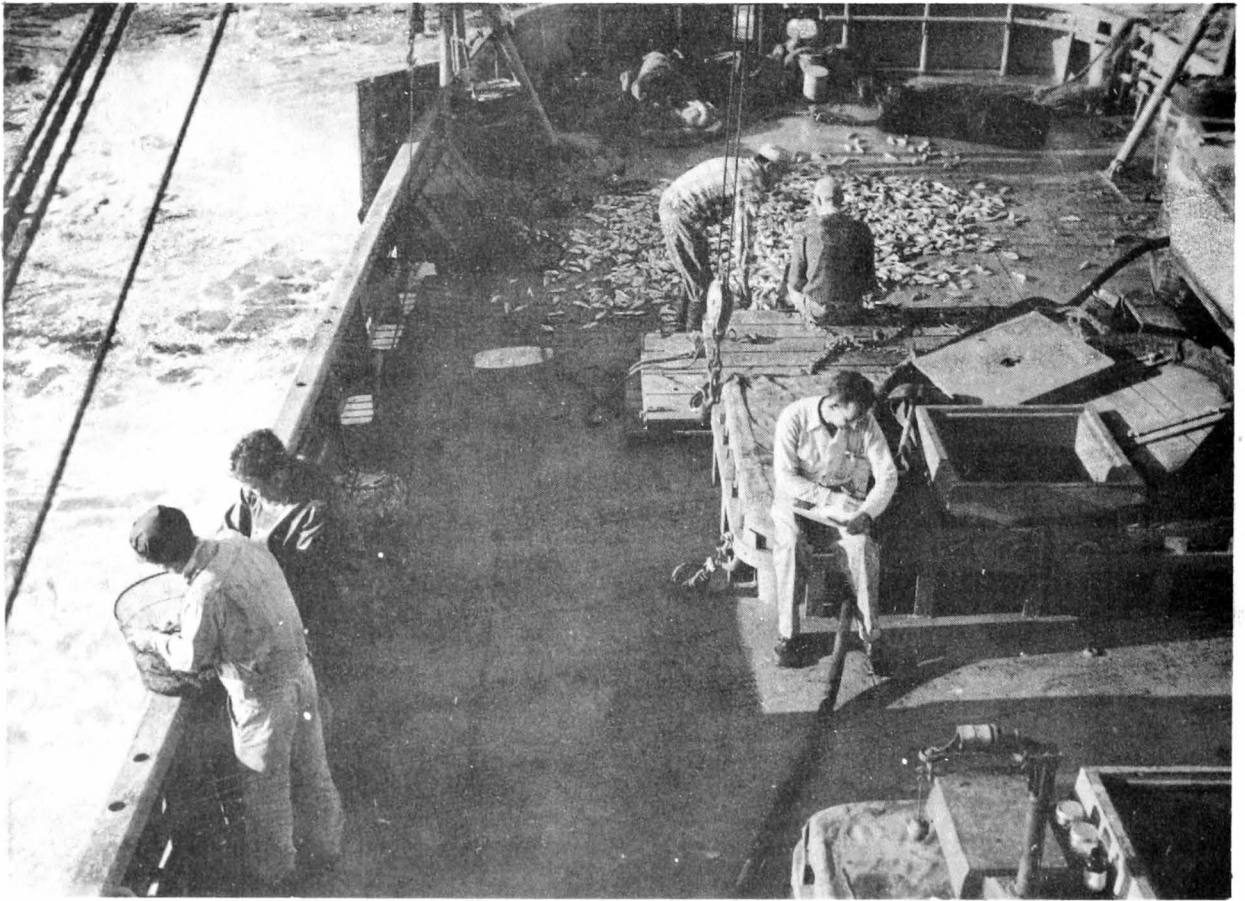


FIG. 7 - SORTING, WEIGHING, COUNTING, AND RECORDING THE CATCH ABOARD THE OREGON.

work above the bottom without doors. Two boats are required to pull the net, each boat handling a pair of cables, one to the float line, and the other to the lead line. The depth at which the net works is adjusted by the speed of the vessels and length of the towing cables. The first net tried at Pascagoula was of relatively fine mesh, with both vertical and horizontal spread of 48 to 52 feet. Setting and hauling was accomplished without great difficulty, but it was found that the net was too large to maneuver properly with the power available (165 horsepower in each boat), and a speed of $2\frac{1}{2}$ to 3 knots was all that could be reached. A smaller net with a 36- to 38-foot opening was constructed. Funds were available for only one day's trial of this net, but results were better than with the larger net, and speeds of from 5 to 7 knots were attained, as well as better maneuverability.

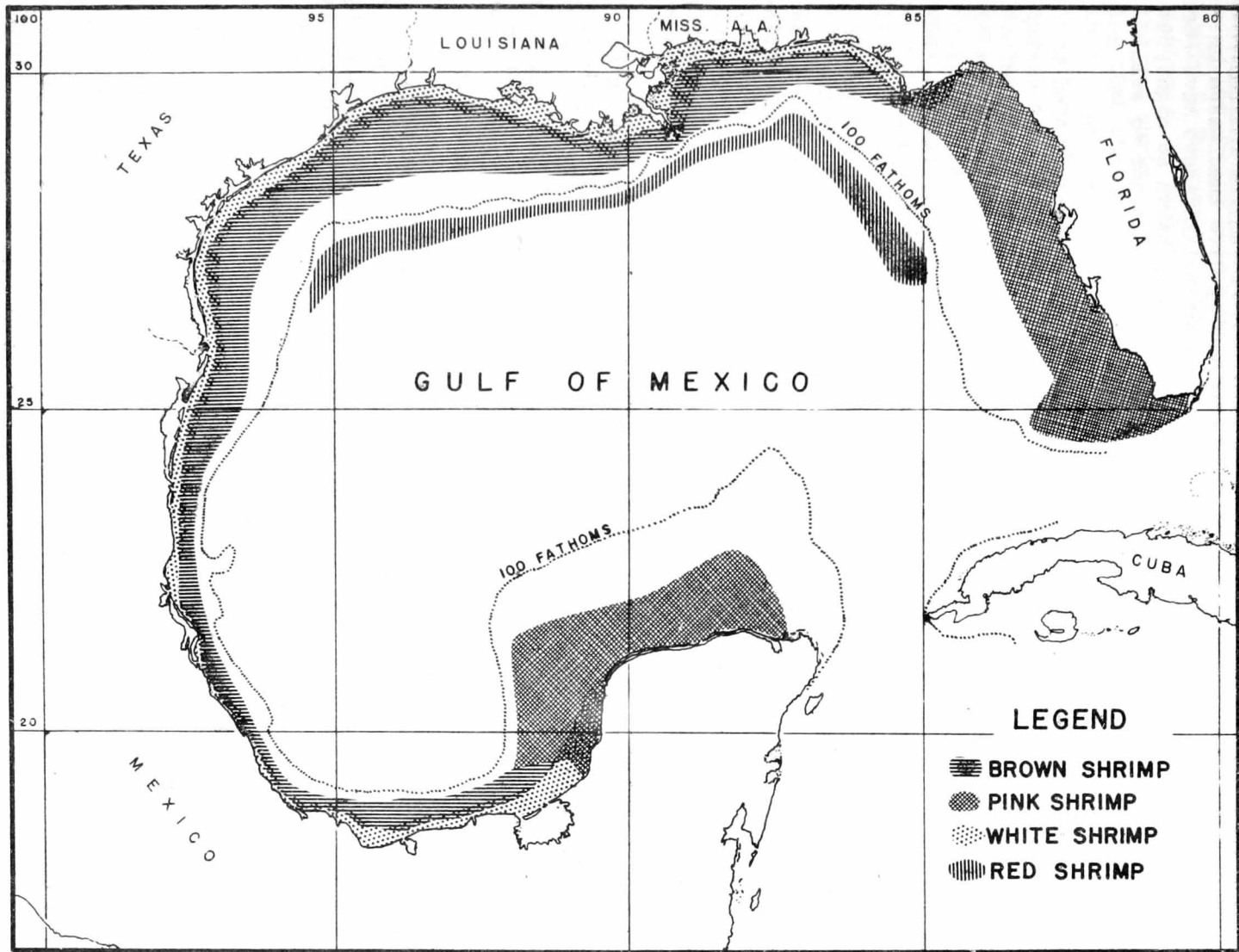


FIG. 8 - COMPOSITE CHART SHOWING KINDS OF MARKETABLE-SIZE SHRIMP MOST COMMON TO EACH GULF AREA. THE RANGES OF SOME SPECIES OVERLAP, AND COMMERCIALY-IMPORTANT QUANTITIES DO NOT OCCUR THROUGHOUT THE RANGE OF ANY OF THESE SPECIES. (BASED ON DATA FROM ALL AVAILABLE SOURCES.)

No indication of its effectiveness for shrimp was obtained because the few sets were made on schools of fish and were carried out to get preliminary data on the operation of the gear. Further trials of the gear by the Service are planned in the near future.

BROWN-GROOVED SHRIMP: Full-grown brown-grooved shrimp, Penaeus aztecus, are commonly found in deeper water than the white shrimp. They have been taken by the Oregon as deep as 68 fathoms, and quantities of commercial interest have been found in depths up to 45 fathoms. These shrimp are generally taken at night, but the difference in the catch rate between day and night fishing is not so well marked in deeper parts of the range.

On several occasions, through cruise reports or by radio communication to commercial vessels, attention was called to the presence of brown-grooved shrimp outside the regular fishing grounds (and in slightly greater depths). Occasionally, this resulted in some boats immediately fishing the area indicated. A more important result is that specific areas where shrimp were taken during the explorations were brought to the attention of many commercial fishing vessels, thus extending the range and increasing the productive potential of the fishery.

On September 14, 1950, the Oregon caught brown-grooved shrimp all night at a rate of 270 pounds per hour in 32 to 34 fathoms about 20 miles west of the Southwest Pass of the Mississippi River. Reports of this catch called the attention of the commercial shrimp fleet to the drags in 30 to 50 fathoms in the vicinity of the Mississippi delta, which indicated presence of commercially-important quantities of large brown-grooved shrimp outside the depth range normally worked by the shrimp fleet. This area subsequently became a part of the regular fishing range of the larger shrimp vessels operating in the vicinity.

Fishing conditions change from year to year as well as seasonally. In the late summer of 1950, for example, the Oregon took good catches of brown-grooved shrimp (stations 95-112) near the mouth of the Mississippi without having nets damaged by sharks. Commercial boats made a few good catches during the following fall in the same spot, but production was severely cut down by shark attacks on the nets, and most boats were forced to seek other grounds.

The average size of brown-grooved shrimp taken by the Oregon was larger in catches from deeper water. Small catches of very large shrimp (3 or 4 to the pound for females) were made in 52 to 68 fathoms south of Pensacola. Brown-grooved shrimp were taken in commercial quantities outside the white-shrimp producing areas of the north-central Gulf coast, the Galveston area, and the Carmen, Mexico, area. They were not taken outside the Apalachicola area of white-shrimp production, but the exploratory-fishing survey of this section is still incomplete.

PINK-GROOVED SHRIMP: Large sizes and quantities of the pink-grooved shrimp, Penaeus duorarum, have been taken by the Oregon only in or near the Dry Tortugas or Campeche commercial-fishing grounds, where the species apparently does not occur abundantly at depths over 25 fathoms. Young specimens occur all along the west coast of Florida in shallow water. In the late spring and summer of 1950, the commercial catch of grooved shrimp off the Alabama and Mississippi coasts contained as much as 30 percent of large pink-grooved shrimp mixed with smaller brown-grooved shrimp. Although the pink-grooved shrimp appears to have a very wide distribution in the shallow water of the Gulf, it is probably the most common commercial species only in the east Gulf from Apalachee Bay to Campeche Bay. Its presence in quantities of value to the commercial fishery in the northern parts of the Campeche Bank and off the west coast of Florida north of the Dry Tortugas grounds is possible, but exploration has not yet shown good results in these areas.

RED SHRIMP: Red shrimp, Hymenopenaeus robustus, were taken by the Oregon in August 1950 in 195 fathoms and 232 fathoms, using a 40-foot shrimp trawl put out on a single trawling cable with a bridle. The shrimp were taken in quantities which indicated that commercial operation might prove feasible, provided larger size nets could be used successfully in the deep water.

The Oregon made a few exploratory drags in September and November 1950 and again in February, April, May, June, and September 1951 in depths from 190 to 240 fathoms. In each drag some of the red shrimp were taken, showing that the species is present throughout the year, although the drags were too few to show anything about relative seasonal abundance. Catches of red shrimp were made off Aransas Pass, Tex., as well as near the mouth of the Mississippi River and southeast of Pensacola, Fla. Since a total of only 30 drags were made in 1950 and 1951 in the apparent depth range of the shrimp, it is likely that future work will extend the range of occurrence. The shallowest water in which red shrimp were taken was 180 fathoms, and the deepest was 305 fathoms.



FIG. 9 - A LARGE CATCH OF PINK-GROOVED SHRIMP, FISH, AND BOTTOM TRASH FROM THE DRY TORTUGAS GROUNDS.

The best catches of red shrimp were obtained near the mouth of the Mississippi River on very soft mud bottom. Some of the catches with the 40-foot net were good, considering the short time the net was on the bottom. The use of larger gear met with less success. Of eight drags made with 100-foot flat trawls and 80-foot balloon trawls in 190 to 240 fathoms only, two were completed without some damage to the nets or doors due to bogging in the mud. The drag producing the best catch was found to have been made with the ground and head lines reversed on one side so that the net could not have been fishing properly. Another drag produced more shrimp from the wings of the net than from the tail. Modifications of the doors and trawls will be tried during future trips in an attempt to develop a method for making the longer drags proportionately as productive as shorter drags with the small 40-foot rig. The bottom does not appear especially uneven in the 200-fathom areas covered. Sonic depth-sounder tracings do not show irregularities such as are characteristic of the "mud lumps" in shallower water near the mouth of the Mississippi River. It is possible that improvements can be made in the performance of the trawls by adjustments in the cut of the doors, length of trawling cable used, and by minor changes in hanging the trawls.

SUMMARY

As part of a general program of fishery exploration and gear research in the Gulf of Mexico, the M/V Oregon has been operated with major emphasis on exploration for shrimp, and during the second half of 1950 and in 1951 completed exploratory coverage of grounds contiguous to the major shrimp-producing areas in the Gulf as well as partial coverage of some of the more-accessible grounds at considerable distances from regular shrimp-fishing activities of the commercial fleet. The fishing log supplemented by the data to be collected in 1952 will form the basis for a comprehensive report on shrimp exploration in the Gulf.

Preliminary phases of work with various designs of shrimp trawls, bottomless trawls, a midwater trawl, and related gear have been completed, and studies of the performance and limitations of common types of trawls will provide a basis for trying more radical gear in 1952.

Some progress in charting and classifying trawling conditions (types of bottom) in the Gulf was made during 1951. It is planned to continue this phase of the work in 1952, using a greater variety of exploratory gear.

Although 19 species of shrimp have been identified from Oregon catches, only species of commercial interest (white, brown-grooved, pink-grooved, and red) are shown in the fishing log, along with other important fishery resources, such as red snapper. On three occasions white shrimp were located outside their usual depth range or geographical range. Discoveries of new concentrations of brown-grooved shrimp by the Oregon have led to extension of the commercial fishing grounds and an increase in the productive potential of the fishery. Exploration in 30 to 50 fathoms in the vicinity of the Mississippi delta revealed the presence of important quantities of large brown-grooved shrimp beyond the normal depth range of the fishery, and this area has subsequently become a part of the regular fishing grounds for the larger vessels operating in the vicinity.

The Oregon has caught deep-water red shrimp throughout the year over a wide range of the Gulf in depths from 180 fathoms to 305 fathoms. Best catches of red shrimp have been made near the mouth of the Mississippi River on very soft mud bottom, and the species has been taken off Aransas Pass, Tex., and southeast of Pensacola, Fla. Catches indicated that commercial fishing of red shrimp might prove feasible when problems of fishing at such depths on the extremely soft bottom are solved. Experiments are continuing to improve effectiveness of the trawls by such methods as varying the cut of the doors and the length of trawling cable, and by changes in hanging the trawls.

LITERATURE CITED

BULLIS, HARVEY R.

1951. GULF OF MEXICO SHRIMP TRAWL DESIGNS. U. S. FISH AND WILDLIFE SERVICE FISHERY LEAFLET 394, SEPTEMBER.

KRASON, WILLIAM S.

1949. FLOATING TRAWLS. AMERICAN CONSULATE REPORT NO. 20, MAY 17, REYKJAVIK, ICELAND. (REPUBLISHED AS U. S. FISH AND WILDLIFE SERVICE FISHERY LEAFLET 343, JUNE).

SPRINGER, STEWART

- 1951A. THE OREGON'S FISHERY EXPLORATIONS IN THE GULF OF MEXICO, 1950 (A PRELIMINARY REPORT). COMMERCIAL FISHERIES REVIEW, VOL. 13, NO. 4, APRIL, PP. 1-8. (ALSO SEPARATE NO. 277).

- 1951B. EXPANSION OF GULF OF MEXICO SHRIMP FISHERY, 1945-50. COMMERCIAL FISHERIES REVIEW, VOL. 13, NO. 9, SEPTEMBER, PP. 1-6. (ALSO SEPARATE NO. 289.)



Table 1 - Fishing Log - M/V Oregon, 1950 - 1951

Station number	1	2	3	4	5	6	7	8	9	10
Date	5/24/50	5/24/50	5/25/50	5/25/50	5/25/50	5/27/50	5/27/50	5/27/50	5/27/50	5/28/50
North latitude	27-52	27-56	27-44.7	27-32.5	27-31	27-58	27-58	27-55	27-58	28-45
West longitude	94-48	94-00	96-00	96-28.	96-24.5	93-46	93-43.5	93-37	93-43	89-43
Depth in fathoms	95	50	33	33	45	55	55	30	55	50
Gear used	P.O.T.	55'F	H.L.	H.L.	55'F	H.L.	40'F	H.L.	40'F	40'F
Hour start	1325	1806	1200	1700	1944	1325	1455	1600	1942	1930
Hour finish	1425	1906	1400	1800	2034	1440	1540	1900	2030	2000
Minutes fishing	60	60	120	60	30	60	45	180	30	30
Bottom type	sft. bu. M.	M.	R.	R.	---	R.	bu. M.	Co. rky.	sft. M.	M.
Bottom condition	clear	clear	lump	lump	clear	lump	clear	lump	(bogged)	clear
Gear damage	---	8	---	---	---	---	---	---	9	---
Air temperature (F)	---	---	---	---	---	---	---	---	---	---
Surface temperature (F)	80.5	80.5	80	79.5	---	81	---	---	---	81
Bottom temperature (F)	59.5	---	77.9	78.5	---	76	---	---	---	---
Wind direction	ExS	N	SE	SE	SE	SE	SE	SE	SE	S
Wind speed (Beaufort scale)	2	2	1	5	2	1	2	2	2	1
Sea condition	calm	calm	calm	moderate	heavy	calm	calm	calm	calm	calm
Total catch in pounds	18	37	61	35	28	36	20	209	40	115
Catch breakdown in pounds:										
Brown shrimp (count/lb.)*	---	3 ea.	---	---	3.5 (9)	---	1 (11)	---	4.5 (10)	19 (10)
Pink shrimp (count/lb.)*	---	---	---	---	---	---	---	---	---	---
White shrimp (count/lb.)*	---	---	---	---	---	---	---	---	---	---
Red shrimp (count/lb.)*	---	---	---	---	---	---	---	---	---	---
Red snapper	1	.5	---	.5	.5	30	---	53	2	29
Most abundant species	scorpaenids	snapper	shark	warsaw	<u>Prionodes</u>	red snapper	sea robins	red snapper	sea robins	sea robins
Scrap	17	36	61	r	24	6	19	100	33	67

Station number	11	12	13	14	15	16	17	18	19	20
Date	5/28/50	5/29/50	6/8/50	6/8/50	6/9/50	6/9/50	6/9/50	6/10/50	6/10/50	6/10/50
North latitude	28-49	29-38	29-50.5	29-38	29-58	30-00	30-06	29-46	29-34	29-42
West longitude	89-33	88-39	88-14.5	88-05	87-02	87-00	86-56	86-30	86-08	85-56
Depth in fathoms	45	8	19	21	44	60	36	62	44	21
Gear used	40'F	trolling	40'F	40'F	H.L.	40'F	40'F	55'F	55'F	H.L.
Hour start	2210	1115	1940	2245	1340	1615	1747	1010	1345	1620
Hour finish	2320	1145	2040	2315	1430	1705	1817	1110	1445	1720
Minutes fishing	60	30	60	30	45	45	30	60	60	60
Bottom type	sft. M.	---	---	---	S. R. Co.	S. Sh.	hrd. S.	M.	---	S.
Bottom condition	(bogged)	---	clear	clear	lump	---	rough	clear	clear	lump
Gear damage	1	---	---	---	---	---	6	---	---	---
Air temperature (F)	---	---	---	---	---	81	78	18	19	87
Surface temperature (F)	---	---	78	77	81	80	81	82.5	87	84
Bottom temperature (F)	---	---	---	---	---	---	---	67.6	69.8	---
Wind direction	S	SW	SW	SE	SE	SE	SE	SE	SE	SE
Wind speed (Beaufort scale)	1	1	3	4	1	1	1	2	2	2
Sea condition	calm	calm	moderate	moderate	calm	calm	calm	calm	calm	calm
Total catch in pounds	0	0	420	20	20	35	5	27	16	50
Catch breakdown in pounds:										
Brown shrimp (count/lb.)*	---	---	15 (25)	---	---	---	---	---	---	---
Pink shrimp (count/lb.)*	---	---	---	---	---	---	---	---	---	---
White shrimp (count/lb.)*	---	---	---	---	---	---	---	---	---	---
Red shrimp (count/lb.)*	---	---	---	---	---	---	---	---	---	---
Red snapper	---	---	---	---	---	---	---	---	---	---
Most abundant species	---	---	croakers	croakers	shark	scorpaenids	---	scorpaenids	---	grouper
Scrap	0	0	405	20	20	35	5	27	16	0

* Heads-on

Table 1 - Fishing Log - M/V Oregon, 1950 - 1951 (continued)

Station number	21	22	23	24	25	26	27	28	29	30
Date	6/11/50	6/11/50	6/11/50	6/12/50	6/14/50	6/14/50	6/14/50	6/15/50	6/15/50	6/22/50
North latitude	29-12	29-12	29-38.5	30-10	29-55	29-56.5	29-47	29/42.6	29-46	29-55
West longitude	85-54	85-54	87-27	86-30	86-58	87-03	86-58	87-19.5	87-04.5	88-25
Depth in fathoms	65	70	33	16	78	40-80	105	48	100	16
Gear used	40'F	40'F	gill net	40'F	40'F	40'F	40'F	H.L.	H.L.	40'F
Hour start	1052	1215	1830	0810	0935	1050	1735	0920	1850	1918
Hour finish	1124	1300	2030	0845	0950	1120	1805	1420	2150	2018
Minutes fishing	30	30	120	30	15	30	30	300	180	60
Bottom type	S.M.	S.M.	---	S.M.Sh.	M.S.	Sh.	---	S.M.	---	S.M.
Bottom condition	---	clear	clear	clear	clear	clear	clear	lump	lump	clear
Gear damage	10	---	---	---	---	---	---	---	---	---
Air temperature (F)	81.5	81.5	82	80	85	85	86	81	88	82
Surface temperature (F)	82	82	82	79	82.5	82.5	85	83	84	84
Bottom temperature (F)	60.8	60.8	---	---	59.7	55.4	55.4	---	---	70.7
Wind direction	NNW	NNW	W	NE	ESE	ESE	SE	SW	SW	SE
Wind speed (Beaufort scale)	3	3	3	3	1	1	1	2	1	2
Sea condition	moderate	moderate	moderate	moderate	calm	calm	calm	calm	calm	calm
Total catch in pounds	0	12	0	5	5	30	67	240	28	109
Catch breakdown in pounds:										
Brown shrimp (count/lb.)*	---	---	---	---	---	---	---	---	---	55 (20)
Pink shrimp (count/lb.)*	---	---	---	---	---	---	---	---	---	---
White shrimp (count/lb.)*	---	---	---	---	---	---	---	---	---	---
Red shrimp (count/lb.)*	---	---	---	---	---	---	---	---	---	---
Red snapper	---	---	---	---	---	---	---	---	---	---
Most abundant species	---	moonfish	---	---	scorpions	<u>Urophysis</u>	---	snapper	---	---
Scrap	0	12	0	5	5	30	67	40	28	109

Station number	31	32	33	34	35	36	37	38	39	40
Date	6/22/50	6/23/50	6/24/50	6/25/50	6/26/50	6/27/50	6/28/50	6/28/50	6/29/50	7/11/50
North latitude	29-55	29-10	25-55	25-00	25-35	28-30	29-41	29-40	30-00	30-11
West longitude	88-21	85-55	83-53	83-02	83-42	85-36	87-19.5	87-16.5	88-07	88-30
Depth in fathoms	16	95	62	28	60	120	45	125	14	5
Gear used	55'F	55'F	55'F	55'F	55'F	55'F	H.L.	55'F	55'F	40'F
Hour start	2045	1513	1630	2043	2005	2125	1120	1930	0330	1520
Hour finish	2145	1558	1700	2243	2105	2225	1450	2030	0450	1620
Minutes fishing	60	45	30	120	60	60	210	60	70	60
Bottom type	S.M.	Sh.gy.M.	Sh.gy.M.	S.	Co.S.	M.S.	S.Co.	M.	---	S.
Bottom condition	clear	clear	clear	clear	clear	clear	clear	lump	---	clear
Gear damage	---	---	---	---	---	---	---	---	---	---
Air temperature (F)	82	81	86	87	87	85	84	82	---	78
Surface temperature (F)	84.5	88	86	85	84	84	84	85.5	---	80.5
Bottom temperature (F)	70.7	53.6	61.5	70.1	62.6	54.3	63.7	51.8	---	78
Wind direction	SE	S	NE	N	SW	NW	S	SW	NE	SE
Wind speed (Beaufort scale)	2	1	1	2	2	3	2	2	3	4
Sea condition	moderate	moderate	moderate	calm	moderate	moderate	moderate	moderate	moderate	moderate
Total catch in pounds	55	5	8	44	50	46	279	0	87	300
Catch breakdown in pounds:										
Brown shrimp (count/lb.)*	28 (25)	---	---	---	---	---	---	---	10 (35)	27 (27)
Pink shrimp (count/lb.)*	---	---	---	2 (13)	---	---	---	---	2 (12)	1 ea.
White shrimp (count/lb.)*	---	---	---	---	---	---	---	---	---	5 (12)
Red shrimp (count/lb.)*	---	---	---	---	---	---	---	---	---	---
Red snapper	---	---	---	---	---	---	250	---	---	---
Most abundant species	---	---	goatfish	flatfish	scorpions	scorpions	red snapper	---	porgies	---
Scrap	27	5	8	42	50	46	29	0	75	268

* Heads-on

Table 1 - Fishing Log -M/V Oregon, 1950 - 1951 (continued)

Station number	41	42	43	44	45	46	47	48	49	50
Date	7/11/50	7/12/50	7/12/50	7/12/50	7/13/50	7/13/50	7/13/50	7/13/50	7/13/50	7/14/50
North latitude	30-05	29-57	29-40	29-19	29-20	29-22	29-04	29-12	29-14	29-45
West longitude	88-23	88-28	88-25	88-53	89-01	89-03.5	88-40	88-35.5	88-35	88-14
Depth in fathoms	10	15	20	18	8	5	90	32	40	20
Gear used	40'F	40'F	40'F	40'F	40'F	40'F	55'F	H.L.	55'F	55'F
Hour start	1740	1035	1400	1830	0555	0800	1313	1635	2049	0140
Hour finish	1840	1135	1500	2030	0755	0955	1413	1905	2149	0510
Minutes fishing	60	60	60	120	115	115	60	150	60	210
Bottom type	S.	M.	M.	M.	M.	M.	M.	S.R.	M.	M.
Bottom condition	clear	clear	clear	clear	clear	clear	clear	lump	clear	clear
Gear damage	---	11	---	---	---	---	10	---	---	---
Air temperature (F)	78	75	76	78	80	80	88	78	80.5	80
Surface temperature (F)	82	81	80.5	80.5	81.5	81.5	86.5	82.5	82	80
Bottom temperature (F)	78	72.5	72.5	72.5	---	---	59.9	---	---	70.7
Wind direction	SE	NW	NNE	SE	SE	SE	SE	NNW	NW	S
Wind speed (Beaufort scale)	4	2	4	3	2	2	2	2	2	1
Sea condition	moderate	moderate	heavy	heavy	moderate	moderate	moderate	moderate	moderate	calm
Total catch in pounds	150	18	20	160	10	100	0	140	195	500
Catch breakdown in pounds:										
Brown shrimp (count/lb.)*	34 (35)	6 (30)	3 (30)	52 (30)	---	8 (35)	---	---	20 (12)	6 (25)
Pink shrimp (count/lb.)*	---	---	---	---	---	---	---	---	---	---
White shrimp (count/lb.)*	---	---	---	8	---	4	---	---	---	---
Red shrimp (count/lb.)*	---	---	---	---	---	---	---	---	---	---
Red snapper	---	.5	---	---	---	---	---	97	---	2
Most abundant species	---	---	---	---	---	---	---	red snapper	porgies	---
Scrap	116	11	17	100	10	88	0	25	175	492

Station number	51	52	53	54	55	56	57	58	59	60
Date	7/14/50	7/31/50	7/31/50	7/31/50	8/1/50	8/1/50	8/1/50	8/1/50	8/1/50	8/2/50
North latitude	30-11	29-51.5	29-51.5	29-40	29-31	29-31	29-31	29-21	29-12	29-09
West longitude	88-25	88-21	88-21	88-22.5	88-24	88-24.5	88-24.5	88-23	88-35.5	88-33
Depth in fathoms	7	19	19	22.5	27	27	27	32	32	110
Gear used	55'F	55'F	55'F	55'F	55'F	55'F	40'F	40'F	H.L.	40'F
Hour start	0735	1630	1915	2145	0945	1045	1142	1325	1715	0945
Hour finish	0835	1730	2030	2245	1015	1115	1217	1355	2115	1045
Minutes fishing	60	60	60	60	30	30	30	30	240	60
Bottom type	M.	S.	S.	S.M.	S.M.	S.M.	S.M.	S.M.	S.R.Sh.	bu.M.
Bottom condition	clear	clear	clear	clear	clear	clear	clear	clear	lump	clear
Gear damage	---	---	---	---	---	---	---	---	---	13
Air temperature (F)	83.5	85	85	84.5	84.5	83.5	83.5	88	---	85
Surface temperature (F)	80	84.5	84	84	85	85	85	86	---	84
Bottom temperature (F)	---	73.4	---	72.1	72.5	72.5	72.5	70.7	---	55.4
Wind direction	S	SSW	SSW	SSW	WxN	WxN	WxN	WxN	WxN	WxN
Wind speed (Beaufort scale)	2	2	2	2	2	2	2	3	3	4
Sea condition	moderate	moderate	moderate	moderate	moderate	moderate	moderate	moderate	moderate	heavy
Total catch in pounds	235	318	170	205	20	136	210	94	314	1200
Catch breakdown in pounds:										
Brown shrimp (count/lb.)*	.5 (40)	1 (22)	78 (22)	20 (14)	2 (14)	1.5 (14)	1 (11)	1 (16)	---	---
Pink shrimp (count/lb.)*	1 ea.	---	---	---	---	---	---	---	---	---
White shrimp (count/lb.)*	4	---	---	---	---	---	---	---	---	---
Red shrimp (count/lb.)*	---	---	---	---	---	---	---	---	---	---
Red snapper	---	1	---	9	---	---	---	---	275	---
Most abundant species	croakers	porgies	croakers	porgies	porgies	porgies	porgies	porgies	red snapper	Scorpaenids
Scrap	229	316	92	176	18	134	209	93	10	1200

* Heads-on

Table 1. Fishing Log - M/V Oregon, 1950 - 1951 (continued)

Station number	61	62	63	64	65	66	68	69	70	71
Date	8/2/50	8/2/50	8/2/50	8/2/50	8/3/50	8/3/50	8/3/50	8/3/50	8/3/50	8/4/50
North latitude	29-04	29-01	29-11.5	29-11.5	29-16	29-13.5	29-14.5	29-17	29-15.5	29-51
West longitude	88-30	88-30	88-43.5	88-43.5	88-20	88-17.5	88-20.5	88-20	88-18	88-11
Depth in fathoms	195	232	40	40	50	85	48	42	50	18
Gear used	40'F	40'F	40'F	40'F	40'F	40'F	H.L.	40'F	40'F	55'F
Hour start	1250	1452	1950	2125	1038	1253	1700	1940	2115	0646
Hour finish	1410	1725	2110	2225	1155	1338	1900	2040	2240	0750
Minutes fishing	60	120	60	60	60	30	60	60	75	60
Bottom type	M.	M.	M.	M.	S.M.	M.	R.	---	S.M.	S.M.
Bottom condition	clear	clear	clear	clear	clear	(bogged)	lump	clear	clear	clear
Gear damage	---	---	---	---	14	8	---	---	---	---
Air temperature (F)	83.5	83.5	---	---	---	---	---	---	81	81.5
Surface temperature (F)	87	87	---	---	---	---	85	---	84	83.5
Bottom temperature (F)	---	---	---	---	---	---	62.6	---	---	72.2
Wind direction	SW	SW	W	W	WNW	WNW	WNW	WNW	SW	NW
Wind speed (Beaufort scale)	1	1	1	1	4	3	3	3	1	2
Sea condition	moderate	moderate	moderate	moderate	moderate	moderate	moderate	moderate	moderate	moderate
Total catch in pounds	28	69	159	132	117	65	87	201	265	23
Catch breakdown in pounds:										
Brown shrimp (count/lb.)*	---	---	44 (10.5)	30 (10.5)	6 (7)	---	---	38 (7.5)	24 (7)	---
Pink shrimp (count/lb.)*	---	---	---	---	---	---	---	---	---	---
White shrimp (count/lb.)*	---	---	---	---	---	---	---	---	---	---
Red shrimp (count/lb.)*	8.5	12	---	---	---	---	---	---	---	---
Red snapper	---	---	1	---	8	---	58	---	---	---
Most abundant species	macrourids	macrourids	porgies	porgies	porgies	green eyes	red snapper	porgies	porgies	porgies
Scrap	20	57	114	102	103	65	15	160	240	23

Station number	72	73	74	75	76	77	78	80	81	82
Date	8/8/50	8/8/50	8/8/50	8/8/50	8/8/50	8/8/50	8/8/50	8/9/50	8/9/50	8/9/50
North latitude	29-10	29-06	29-05	29-04.5	29-05.5	29-07	29-10	29-12.5	29-20	29-21.7
West longitude	88-50	88-47	88-46	88-43.5	88-43	88-43.5	88-50	88-14	88-07	88-11
Depth in fathoms	41	50	58	48	54	45	40	120	47	38
Gear used	40'F	40'F	40'F	H.L.	40'F	40'F	40'F	40'F	40'F	40'F
Hour start	0030	0207	0515	0700	1915	2113	2245	1502	1840	2030
Hour finish	0130	0307	0615	1700	2015	2213	2345	1640	1940	2130
Minutes fishing	60	60	60	600	60	60	60	90	60	60
Bottom type	M.	Sh.S.M.	Co.M.	Co.M.	M.	M.	---	M.	---	---
Bottom condition	clear	(bogged)	sharp coral	lump	(bogged)	clear	---	(bogged)	clear	clear
Gear damage	---	---	6	---	9	---	8	1	---	---
Air temperature (F)	83	82.5	81.5	---	---	81	---	80	78.5	---
Surface temperature (F)	82	82	80.5	---	---	---	---	85	83.5	---
Bottom temperature (F)	---	74.6	---	---	---	---	---	54.2	---	---
Wind direction	ESE	ESE	ENE	---	ESE	ESE	ESE	E	SE	SE
Wind speed (Beaufort scale)	2	2	2	---	3	3	3	3	3	3
Sea condition	moderate	moderate	moderate	moderate	moderate	moderate	heavy	heavy	heavy	heavy
Total catch in pounds	164	15	12	0	135	125	0	0	283	81
Catch breakdown in pounds:										
Brown shrimp (count/lb.)*	62 (11)	1 (11)	---	---	4.5 (7)	30 (9)	---	---	45 (9)	14 (8)
Pink shrimp (count/lb.)*	---	---	---	---	---	---	---	---	---	---
White shrimp (count/lb.)*	---	---	---	---	---	---	---	---	---	---
Red shrimp (count/lb.)*	---	---	---	---	---	---	---	---	---	---
Red snapper	---	---	8.5	---	6.5	---	---	---	---	---
Most abundant species	sea robins	porgies	snapper	---	porgies	porgies	---	---	3	porgies
Scrap	102	14	3	0	124	95	0	0	235	67

* Heads-on

Table 1 - Fishing Log - M/V Oregon, 1950 - 1951 (continued)

Station number	83	84	85	86	87	88	89	90	91	93
Date	8/9/50	8/10/50	8/23/50	8/23/50	8/23/50	8/23/50	8/23/50	8/24/50	8/24/50	8/24/50
North latitude	29-20.5	29-20	29-10	29-09	29-16	29-14	29-17	29-14	29-13.5	29-00
West longitude	88-08	88-11	88-48	88-45	88-20	88-35	88-37	88-35	88-38	88-48
Depth in fathoms	45	45	40	42	32	37	35	40	38	122
Gear used	40'F	40'F	100'F	100'F	H.L.	100'F	40'F	40'F	P.O.T.	P.O.T.
Hour start	2154	2340	0210	0335	1840	2005	2140	2315	0115	1533
Hour finish	2254	0040	0315	0450	1940	2120	2245	0015	0220	1745
Minutes fishing	60	60	60	60	60	60	60	60	60	30
Bottom type	---	S.M.	M.	M.	---	M.	gy.M.	M.	---	sft.M.
Bottom condition	clear	clear	clear	clear	lump	clear	clear	clear	clear	(bogged)
Gear damage	---	---	---	---	---	---	---	---	---	15
Air temperature (F)	80	---	79	83	86.5	85	84.5	85	---	86
Surface temperature (F)	---	---	85	85	86	85.5	84	85	---	86.8
Bottom temperature (F)	---	---	---	---	70.7	70.4	70.4	70.4	---	66.5
Wind direction	SE	SE	SE	SE	ENE	ENE	ENE	ENE	---	ESE
Wind speed (Beaufort scale)	3	3	1	1	3	3	3	3	---	2
Sea condition	heavy	moderate	calm	calm	moderate	calm	calm	calm	calm	moderate
Total catch in pounds	176	36	509	391	8.5	446	25	187	23	363
Catch breakdown in pounds:										
Brown shrimp (count/lb.)*	52 (9)	10 (9)	117 (10)	68 (10)	---	55 (11)	2 (11)	42 (10)	.5 (10)	---
Pink shrimp (count/lb.)*	---	---	---	---	---	---	---	---	---	---
White shrimp (count/lb.)*	---	---	---	---	---	---	---	---	---	---
Red shrimp (count/lb.)*	---	---	---	---	---	---	---	---	---	---
Red snapper	---	---	---	---	8.5	8.5	---	---	---	---
Most abundant species	porgies	porgies	sea robins	sea robins	red snapper	porgies	porgies	porgies	porgies	sea urchins
Scrap	124	26	392	323	0	382	23	145	22	363
Station number	94	95	96	97	98	99	100	101	102	103
Date	8/24/50	8/27/50	8/27/50	8/27/50	9/11/50	9/12/50	9/12/50	9/12/50	9/12/50	9/12/50
North latitude	29-04.5	29-13	29-13	29-13	29-13	29-13	29-11	29-07.5	29-07.5	29-12
West longitude	88-43.5	88-52	88-52	88-52	88-51	88-51	88-50.5	88-50.5	88-50.5	88-53
Depth in fathoms	48	36	36	36	34	36	38	46	45	30
Gear used	H.L.	100'F	100'F	100'F	100'F	100'F	100'F	100'F	100'F	100'F
Hour start	1930	0135	1854	2022	2300	0030	0200	1830	2000	2230
Hour finish	2130	0250	2005	2140	0015	0130	0300	1930	2100	2330
Minutes fishing	120	60	60	60	60	60	60	60	60	60
Bottom type	---	gy.M.	gy.M.	gy.M.	M.	M.	M.	M.	M.	M.
Bottom condition	lump	clear	clear	(bogged)	clear	clear	clear	clear	clear	clear
Gear damage	---	---	---	8	---	---	---	---	---	---
Air temperature (F)	86	81	83	83	80	---	---	81	---	82
Surface temperature (F)	---	85.5	85	85	80	81	81	82	82.5	84
Bottom temperature (F)	---	70.9	71.1	71.1	63.6	63.6	63.9	64.4	64.4	68.7
Wind direction	ESE	SE	E	E	S	S	S	S	S	S
Wind speed (Beaufort scale)	2	3	4	4	1	1	1	2	2	2
Sea condition	moderate	moderate	heavy	heavy	calm	calm	calm	moderate	moderate	moderate
Total catch in pounds	25	475	623	0	355	275	375	150	275	475
Catch breakdown in pounds:										
Brown shrimp (count/lb.)*	---	225 (13)	177 (14)	---	104 (8)	59 (10)	55 (8)	3.5 (10)	20 (8)	95 (11)
Pink shrimp (count/lb.)*	---	---	---	---	---	---	---	---	---	---
White shrimp (count/lb.)*	---	---	---	---	---	---	---	---	---	---
Red shrimp (count/lb.)*	---	---	---	---	---	---	---	---	---	---
Red snapper	---	---	---	---	---	16	---	---	---	---
Most abundant species	shark	sea bass	sea bass	---	sea robins	sea robins	sea robins	porgies	porgies	porgies
Scrap	25	250	454	0	250	200	320	145	255	380

* Heads-on

Table 1. Fishing Log - M/V Oregon, 1950 - 1951 (continued)

Station number	104	105	106	107	108	109	110	111	112	115
Date	9/13/50	9/13/50	9/13/50	9/13/50	9/13/50	9/14/50	9/14/50	9/14/50	9/15/50	9/16/50
North latitude	29-15	28-56	28-56	28-53	28-50	28-56	28-57	28-56.5	28-56.5	28-29
West longitude	88-46	89-37	89-39	89-36.5	89-39	89-36	89-36	89-36.5	89-36.5	90-00.5
Depth in fathoms	33	34	34	37	33	32	33	32	32	60
Gear used	100'F	100'F	100'F	100'F	H.L.	100'F	100'F	100'F	100'F	40'F
Hour start	0015	1700	1830	2000	2330	1720	2000	2300	0215	1605
Hour finish	0115	1800	1930	2100	0330	1920	2300	0200	0515	1705
Minutes fishing	60	60	60	240	240	120	180	180	180	60
Bottom type	M.	bk.M.	M.	M.	Co.rky.	M.	M.	M.	M.	br.M.Sh.
Bottom condition	clear	clear	clear	clear	lump	clear	clear	clear	clear	rough
Gear damage	---	---	---	---	---	---	---	---	---	4
Air temperature (F)	80	88	82	82	83	82	81	80	80	86
Surface temperature (F)	83.5	86	84.5	84	83.5	84	84	84	83.5	85
Bottom temperature (F)	64.3	64.4	66.2	63.8	74.3	67.4	68	68	68	62.1
Wind direction	S	SE	S	S	NW	SE	NW	SW	SW	S
Wind speed (Beaufort scale)	3	1	1	1	2	1	2	2	2	1
Sea condition	moderate	moderate	moderate	moderate	moderate	moderate	calm	calm	calm	calm
Total catch in pounds	350	500	754	408	397	965	1796	1800	2546	3
Catch breakdown in pounds:										
Brown shrimp (count/lb.)*	177 (11)	146 (11)	259 (13)	178 (14)	---	320 (16)	667 (12)	712 (13)	946 (13)	---
Pink shrimp (count/lb.)*	---	---	---	---	---	---	---	---	---	---
White shrimp (count/lb.)*	---	---	---	---	---	---	---	---	---	---
Red shrimp (count/lb.)*	---	---	---	---	---	---	---	---	---	---
Red snapper	---	1	---	---	223	12	11	---	---	---
Most abundant species	porgies	silver eels	flatfish	porgies	red snapper	white trout	croakers	croakers	croakers	---
Scrap	173	353	495	230	50	632	1118	1088	1600	3
Station number	116	117	118	119	120	121	122	123	126	127
Date	9/16/50	9/16/50	9/17/50	9/17/50	9/17/50	9/18/50	9/18/50	9/18/50	9/23/50	9/23/50
North latitude	28-27	28-10.5	28-05.5	28-30	28-44.3	28-45	28-39	28-46.5	29-02	29-02
West longitude	90-15	90-28.5	90-42	90-29	90-09.5	90-06	89-49	89-45	88-34.5	88-34
Depth in fathoms	30	30	46	20	20	21	46	40	195	232-258
Gear used	100'F	100'F	H.L.	100'F	100'F	100'F	H.L.	100'F	40'F	40'F
Hour start	1830	2115	1055	1745	2120	1345	1700	1915	1115	1300
Hour finish	1940	2215	1500	1845	2220	1415	1820	2025	1222	1400
Minutes fishing	60	60	180	60	60	30	80	60	45	60
Bottom type	S.M.	M.	Co.rky.	M.	S.M.	S.M.	Co.rky.	M.	---	bk.M.
Bottom condition	small lump	small lump	lump	clear	olear	clear	lump	clear	hilly	hilly
Gear damage	6	---	---	---	---	---	---	---	---	---
Air temperature (F)	82	82	92	82	82	84	84	82	83	88
Surface temperature (F)	85	84	85	84	84.5	85	84.7	85	83	84
Bottom temperature (F)	68	73.4	69.2	77.9	75.2	75.7	63.9	66.2	---	---
Wind direction	---	SE	SW	SE	S	SE	SE	SE	N	N
Wind speed (Beaufort scale)	0	1	1	1	2	2	2	2	1	1
Sea condition	calm	calm	calm	calm	moderate	moderate	moderate	moderate	calm	calm
Total catch in pounds	1	780	64	2275	1455	204	52	620	117	55
Catch breakdown in pounds:										
Brown shrimp (count/lb.)*	---	82 (14)	---	57 (16)	78 (16)	4 (16)	---	62 (8)	---	---
Pink shrimp (count/lb.)*	---	---	---	---	---	---	---	---	---	---
White shrimp (count/lb.)*	---	---	---	---	---	---	---	---	---	---
Red shrimp (count/lb.)*	---	---	---	---	---	---	---	---	---	---
Red snapper	---	---	64	20	5	---	52	5	60 (27)	8
Most abundant species	---	porgies	red snapper	spots	croakers	croakers	red snapper	porgies	macrourids	macrourids
Scrap	1	690	0	2198	1367	200	0	553	57	47

*Heads-on

Table 1 - Fishing Log - M/V Oregon, 1950 - 1951 (continued)

Station number	128	129	130	131	132	133	134	135	136	137
Date	9/23/50	9/23/50	9/23/50	9/24/50	9/24/50	9/24/50	9/24/50	9/25/50	11/16/50	11/17/50
North latitude	29-15.5	29-15.5	29-14	29-20	29-22	29-15.5	29-17.5	29-28	30-04	29-30
West longitude	88-34.3	88-34.5	88-35	88-35.5	88-49	89-03	89-04	89-15	88-34	88-36.5
Depth in fathoms	38	38	38	32	19	6	6	5	10	20
Gear used	100'F	100'F	H.L.	100'F	100'F	100'F	100'F	100'F	100'F	100'F
Hour start	1830	1920	2100	1040	1300	1500	1810	1200	1940	0030
Hour finish	1900	2030	2200	1140	1330	1600	1910	1300	2030	0110
Minutes fishing	30	60	60	60	30	60	60	60	45	30
Bottom type	---	---	---	---	---	M.	M.	M.	S.Sh.M.	M.
Bottom condition	clear	clear	lump	clear	clear	clear	clear	clear	clear	(bogged)
Gear damage	---	---	---	---	---	---	13	---	---	4
Air temperature (F)	78	81	78	75.5	80	76	76	76	70	59
Surface temperature (F)	82	82	82	81	82	80	80	80.5	70	70.5
Bottom temperature (F)	70.8	71	68.6	72.5	78.1	80.8	80.4	80.5	69.9	74.1
Wind direction	NNW	NNW	NxW	N	N	NNW	N	NE	---	NW
Wind speed (Beaufort scale)	2	1	1	1	2	3	2	4	0	4
Sea condition	moderate	calm	calm	moderate	moderate	moderate	moderate	moderate	calm	moderate
Total catch in pounds	265	662	0	124	280	340	350	70	20	14
Catch breakdown in pounds:										
Brown shrimp (count/lb.)*	44 (12)	107 (12)	---	1 (14)	13 (17)	5	---	4	---	4 (19)
Pink shrimp (count/lb.)*	---	---	---	---	---	---	---	---	---	---
White shrimp (count/lb.)*	---	---	---	---	---	61	62 (16)	20	---	---
Red shrimp (count/lb.)*	---	---	---	---	---	---	---	---	---	---
Red snapper	---	---	---	---	---	---	---	---	2.5	---
Most abundant species	porgies	sea bass	---	porgies	silver eels	croakers	croakers	croakers	menhaden	white trout
Scrap	221	555	0	123	267	278	288	51	17	10

Station number	138	139	140	141	142	143	144	145	146	147
Date	11/17/50	11/17/50	11/18/50	11/18/50	11/21/50	11/21/50	11/21/50	11/22/50	11/22/50	11/22/50
North latitude	28-56	28-51	29-10	28-37	28-03	28-02	28-06	28-00	28-06.5	28-17
West longitude	89-34.5	89-35.5	93-20	93-16	94-33	94-39	94-32	94-38	94-44	94-46
Depth in fathoms	30	40	10	20	33	36	34	40	30	25
Gear used	100'F	100'F	100'F	100'F	100'F	100'F	F.T.	74'B.	74'B	74'B
Hour start	1820	2010	1500	2000	1830	2105	1400	1815	2020	2225
Hour finish	1850	2040	1615	2100	1930	2205	1630	1900	2100	2310
Minutes fishing	30	30	60	60	60	60	150	30	30	30
Bottom type	M.	M.	S.Sh.	gy.M.	S.M.	S.M.	S.M.Sh.	S.M.	S.M.	M.
Bottom condition	clear	clear	clear	clear	clear	hilly	rough	hilly	clear	clear
Gear damage	---	---	---	---	6	9	---	9	---	---
Air temperature (F)	68	68	70	70	65	64	72	70	69	78
Surface temperature (F)	70	72.3	70.5	70.7	74	74.2	74	74	74	74
Bottom temperature (F)	74.8	72.3	70.7	74.1	74	75.2	74.2	73.2	74.6	73.7
Wind direction	N	N	E	SE	E	E	NE	NE	NE	NE
Wind speed (Beaufort scale)	2	4-5	3	6	2	3	3	3	3	2
Sea condition	moderate	moderate	moderate	heavy	heavy	heavy	heavy	moderate	moderate	moderate
Total catch in pounds	250	300	300	110	500	124	0	0	140	280
Catch breakdown in pounds:										
Brown shrimp (count/lb.)*	41 (15)	124 (15)	---	26 (9)	150 (8)	24 (10)	---	---	16 (10)	42 (9)
Pink shrimp (count/lb.)*	---	---	---	---	---	---	---	---	---	---
White shrimp (count/lb.)*	---	---	---	---	---	---	---	---	---	---
Red shrimp (count/lb.)*	---	---	---	---	---	---	---	---	---	---
Red snapper	27	---	---	---	---	---	---	---	---	---
Most abundant species	croakers	croakers	porgies	porgies	porgies	porgies	---	---	---	---
Scrap	182	176	300	84	350	100	0	0	124	238

* Heads-on

Table 1 - Fishing Log - M/V Oregon, 1950 - 1951 (continued)

Station number	169	170	171	172	173	174	175	176	177	178
Date	11/29/50	11/29/50	11/29/50	11/29/50	11/29/50	12/7/50	12/7/50	12/7/50	12/7/50	12/7/50
North latitude	27-56	28-04	28-14	28-14	28-14	28-40	28-48	28-49	28-49	28-49
West longitude	95-38	95-36	95-34	95-34	95-34	89-49.4	89-43.5	89-42.5	89-42.5	89-42.5
Depth in fathoms	28	25	18	18	18	42	40	36	35	30
Gear used	40'F	40'F	65'W	100'F	100'F	F.T.	100'F	100'F	100'F	100'F
Hour start	1545	1705	1850	2023	2142	1400	1750	1925	2045	2305
Hour finish	1620	1740	2005	2130	2220	1600	1900	2030	2300	0230
Minutes fishing	30	30	60	60	30	120	60	60	120	180
Bottom type	S.M.	S.M.	S.M.	S.M.	S.M.	rky.	M.	M.	M.	M.
Bottom condition	clear	clear	clear	clear	clear	rough	clear	clear	clear	(bogged)
Gear damage	---	---	---	---	---	---	---	---	---	---
Air temperature (F)	72	70	70	68	68	46	45	45	48	48
Surface temperature (F)	69.8	68.5	68	68	68	64	62	60.5	60	60.8
Bottom temperature (F)	72.9	73	72.5	71.9	71.9	61.9	66.2	67.4	65.8	69.8
Wind direction	SSW	S	S	SSW	SSE	NW	NW	NW	NE	NE
Wind speed (Beaufort scale)	3	3	3	3	3	2	2	3	3	3
Sea condition	moderate	moderate	moderate	moderate	moderate	calm	calm	calm	calm	calm
Total catch in pounds	27	50	269	226	110	9	675	739	1000	1500
Catch breakdown in pounds:										
Brown shrimp (count/lb.)*	2 (13)	4 (10)	47 (10)	60 (10)	27 (10)	---	61 (14)	109 (14)	185 (16)	104 (16)
Pink shrimp (count/lb.)*	---	---	---	---	---	---	---	---	---	---
White shrimp (count/lb.)*	---	---	---	---	---	---	---	---	---	---
Red shrimp (count/lb.)*	---	---	---	---	---	---	---	---	---	---
Red snapper	2	---	---	---	---	9	.5	1	---	---
Most abundant species	sea robins	porgies	croakers	croakers	croakers	snapper	see bass	croakers	croakers	croakers
Scrap	23	46	222	166	87	0	613	629	815	1396

Station number	179	180	181	182	183	184	185	186	187	202
Date	12/8/50	12/8/50	12/13/50	12/13/50	12/14/50	12/14/50	12/14/50	12/14/50	12/14/50	1/8/51
North latitude	28-35	28-43	30-08.5	30-16	30-08.5	30-13	30-13	30-13	30-08.5	30-04
West longitude	89-12	89-18	88-03.5	88-01.5	88-03.5	88-08	88-08	88-08	88-03.5	88-31
Depth in fathoms	180	80	10	3	9	7	7	7	9	10
Gear used	40'F	40'F	100'F	100'F	100'F	100'F	100'F	100'F	100'F	100'F
Hour start	1600	1705	1515	1705	0705	0900	1105	1320	1500	1620
Hour finish	1630	1820	1615	1805	0808	1055	1310	1415	1700	1650
Minutes fishing	30	60	60	60	60	115	120	55	120	30
Bottom type	M.	M.	S.M.	M.	S.M.	M.	M.	M.	---	S.M.
Bottom condition	lump	(bogged)	---	clear	clear	clear	clear	clear	clear	clear
Gear damage	1	9	16	---	---	---	---	---	---	---
Air temperature (F)	50	50	56	52	50	50	52	52	52	51
Surface temperature (F)	73.1	72	62	53	61.5	59	58	58	60	57
Bottom temperature (F)	---	59	62.6	54	65	62.2	60.8	60.8	62.6	60.2
Wind direction	ENE	ENE	NE	NE	NE	NE	NE	NE	E	NW
Wind speed (Beaufort scale)	4	4	2	3	3	3	3	3	1	3
Sea condition	calm	moderate	calm	calm	moderate	calm	calm	calm	calm	moderate
Total catch in pounds	0	383	0	75	168	300	260	180	250	1500
Catch breakdown in pounds:										
Brown shrimp (count/lb.)*	---	---	---	---	1 ea.	1 (21)	1 (18)	---	---	---
Pink shrimp (count/lb.)*	---	---	---	---	---	---	---	---	---	---
White shrimp (count/lb.)*	---	---	---	---	7	84 (21)	75 (18)	42 (17)	128	---
Red shrimp (count/lb.)*	---	---	---	---	---	---	---	---	---	---
Red snapper	---	---	---	---	---	---	---	---	---	---
Most abundant species	---	scorpenids	---	stingarees	croakers	croakers	croakers	croakers	croakers	croakers
Scrap	0	383	0	75	160	215	184	138	122	1500

* Heads-on

Table 1 - Fishing Log - M/V Oregon, 1950 - 1951 (continued)

Station number	203	218	219	220	221	222	223	224	226	227
Date	1/8/51	1/10/51	1/10/51	1/10/51	1/11/51	1/11/51	1/11/51	1/11/51	1/13/51	1/13/51
North latitude	29-37	23-27	23-00	22-45	22-45	22-32	22-08	21-55	24-46	24-46
West longitude	88-31.5	89-34	89-36	89-09	89-09	88-47	88-38	88-37	82-59	82-59
Depth in fathoms	20	124	76	35	34	29	20	14	25	25
Gear used	100'F	40'F	40'B	H.L.	F.T.	40'B	40'B	74'B	100'F	100'F
Hour start	1953	1230	1700	2230	0700	1542	2015	2307	1906	2020
Hour finish	2030	1300	1740	0930	1030	1610	2100	2355	2015	2135
Minutes fishing	30	30	30	180	180	25	30	45	60	60
Bottom type	sm. bu. M.	Co. S. M.	S. wh. M.	Co. rky	Co. rky.	Co.	Co. S. Sp.	Co. S.	Co. M.	Co. M.
Bottom condition	lump	rough	clear	rough	rough	rough	rough	rough	clear	clear
Gear damage	9	4	11	---	---	5-11	4	3-9	6	6
Air temperature (F)	48	69	77	74	74	73	70	69	69	69
Surface temperature (F)	61	73	73	71	71	73.5	73	72	71	71
Bottom temperature (F)	62.2	55.4	63.3	75.2	75.2	73.4	73.1	72.5	70.5	70.5
Wind direction	N	SE	SE	E	E	E	E	E	ESE	SE
Wind speed (Beaufort scale)	3	3	1	2	2	3	4	5	4	4
Sea condition	moderate	moderate	moderate	moderate	moderate	moderate	moderate	heavy	heavy	moderate
Total catch in pounds	40	10	25	150	1	155	20	15	485	215
Catch breakdown in pounds:										
Brown shrimp (count/lb.)*	1 (13)	---	---	---	---	---	---	---	---	---
Pink shrimp (count/lb.)*	---	---	---	---	---	---	3 ea.	---	135 (18)	37 (18)
White shrimp (count/lb.)*	---	---	---	---	---	---	---	---	---	---
Red shrimp (count/lb.)*	---	---	---	---	---	---	---	---	---	---
Red snapper	---	---	---	100	---	---	---	---	---	2
Most abundant species	croakers	Galappa	lizard fish	snapper	Prionodes	sea cucumbers	sea cucumbers	grunts	flatfish	flatfish
Scrap	39	10	25	10	1	145	20	15	350	176

Station number	228	229	230	231	232	233	234	235	236	237
Date	1/15/51	1/18/51	1/18/51	1/19/51	1/19/51	1/19/51	1/19/51	1/19/51	1/20/51	1/20/51
North latitude	24-40	27-22.5	27-16.5	26-05	25-03.5	25-03	24-52	24-52	24-40	24-40
West longitude	82-56	83-02	83-09.5	83-04	83-08	82-56	82-54	82-54	82-59	82-59
Depth in fathoms	7	13	18	85	30	25	24	24	25	25
Gear used	F.T.	100'F	40'B	40'F	40'F	40'B	40'B	100'F	100'F	100'F
Hour start	2200	1815	1950	0412	1750	1950	2137	2245	1700	1815
Hour finish	0500	1900	2005	0445	1930	2035	2215	0150	1808	2125
Minutes fishing	420	30	15	15	90	30	30	180	60	180
Bottom type	rky.	Co. Sp.	Co. Sp.	Co. Sp.	Co. Sp.	Sp.	wh. M.	wh. M. Sp.	wh. M. Sp.	wh. M.
Bottom condition	rough	hilly	hilly	rough	clear	clear	clear	clear	clear	clear
Gear damage	---	6	6	---	13	---	---	---	---	---
Air temperature (F)	70	62	65	67	69	68	68	68	68	68
Surface temperature (F)	70	64	64	68	69	69	69	69	68	68
Bottom temperature (F)	71.8	63.5	64.4	60.4	68.3	68	68.4	68	69	68.4
Wind direction	S	SE	SE	S	SE	SE	SE	SE	E	E
Wind speed (Beaufort scale)	2	2	2	2	4	3	3	3	3	3
Sea condition	moderate	moderate	heavy	heavy	moderate	moderate	moderate	moderate	moderate	moderate
Total catch in pounds	0	10	0	12	1000	350	75	400	246	1150
Catch breakdown in pounds:										
Brown shrimp (count/lb.)*	---	---	---	---	---	---	---	---	---	---
Pink shrimp (count/lb.)*	---	---	---	---	25 (12)	1 ea.	18 (18)	250 (18)	96 (17)	436 (19)
White shrimp (count/lb.)*	---	---	---	---	---	---	---	---	---	1 ea.
Red shrimp (count/lb.)*	---	---	---	---	---	---	---	---	---	---
Red snapper	---	---	---	---	---	---	---	---	1	2
Most abundant species	---	mojarra	---	sjoorpenida	sponge	sponge	flatfish	flatfish	pinfish	flatfish
Scrap	0	10	0	12	1000	350	57	150	150	712

* Heads-on

Table 1 - Fishing Log - M/V Oregon, 1950 - 1951 (continued)

Station number	238	239	240	241	242	243	244	245	246	247
Date	1/20/51	1/21/51	1/21/51	1/21/51	1/21/51	1/21/51	1/22/51	1/22/51	1/23/51	1/23/51
North latitude	24-46	24-46	24-36	24-33	24-24	24-19	24-46	24-57	25-06	25-16
West longitude	82-59	82-59	82-52	82-46	82-46	82-42	82-59	82-36	82-39	82-49
Depth in fathoms	25	25	13	14	17	117	25	18	22	24
Gear used	74'B	74'B	40'B	40'B	40'B	40'B	100'F	100'F	100'F	40'B
Hour start	2350	0100	1720	1835	1956	2130	1734	2320	0225	1803
Hour finish	0055	0420	1840	1910	2030	2222	2045	0120	0340	1920
Minutes fishing	60	180	60	30	30	30	180	120	60	60
Bottom type	Co.M.	Co.M.	---	Co.M.	Co.M.	Sh.M.	Co.M.	---	wh.M.	S.M.
Bottom condition	clear	clear	clear	clear	clear	clear	clear	clear	clear	clear
Gear damage	---	---	---	---	---	---	---	---	---	---
Air temperature (F)	68	66	68	68	68	68	68	66	64	67
Surface temperature (F)	68	68	71	72	72	72.5	70	69	66.5	67.5
Bottom temperature (F)	68.6	68.6	69.8	70.5	70.8	51.2	69.4	66.2	66.2	67.1
Wind direction	E	E	NE	NE	NE	NE	NE	NE	NE	NE
Wind speed (Beaufort scale)	3	3	2	2	2	2	2	3	2	1
Sea condition	moderate	moderate	moderate	moderate	moderate	moderate	moderate	moderate	moderate	moderate
Total catch in pounds	614	1188	250	112	200	20	535	500	375	1500
Catch breakdown in pounds:										
Brown shrimp (count/lb.)*	---	---	---	---	---	---	---	---	---	---
Pink shrimp (count/lb.)*	357 (17)	388 (18)	14 (29)	---	---	---	305 (17)	95 (18)	5 (18)	1 (15)
White shrimp (count/lb.)*	---	---	---	---	---	---	---	---	---	---
Red shrimp (count/lb.)*	---	---	---	---	---	---	---	---	---	---
Red snapper	1	---	---	---	---	---	1	1	---	1
Most abundant species	flatfish	flatfish	flatfish	sponge	sponge	<u>Tugurium</u>	flatfish	flatfish	sponge	sponge
Scrap	257	800	235	112	200	20	230	400	370	1500
Station number	248	249	250	251	252	253	254	255	256	257
Date	1/23/51	1/23/51	1/23/51	1/24/51	1/24/51	1/24/51	1/26/51	1/27/51	1/27/51	1/27/51
North latitude	25-16	25-20	25-25	26-09	26-14	26-18	26-44	27-36	28-10	28-41
West longitude	82-49	82-55	82-59	82-10	82-04.5	82-04	82-14	83-41	85-00	86-03
Depth in fathoms	24	26	27	9	7	6	2	25	85	165
Gear used	40'BL	40'BL	40'BL	40'B	40'B	40'F	40'B	40'B	40'B	40'F
Hour start	1940	2133	2315	1325	1430	1540	1708	0430	1310	2005
Hour finish	2050	2240	0025	1400	1502	1620	1720	0525	1400	2105
Minutes fishing	60	60	60	30	30	30	10	45	30	30
Bottom type	S.M.	---	---	S.Sh.M.	S.Sh.Sp.	S.Sh.	S.rky.	Sh.M.	---	Sh.M.
Bottom condition	clear	clear	clear	clear	clear	clear	clear	clear	clear	clear
Gear damage	---	---	---	6	---	---	---	---	---	---
Air temperature (F)	67	66	66	72	72	70	61	52	63	61
Surface temperature (F)	67.5	67.8	68	66.5	66.5	65	60	66	66.5	68.5
Bottom temperature (F)	67.1	67.1	67.4	63.5	63.5	64.4	60	66.2	58.1	52.1
Wind direction	NE	NE	NE	SW	SW	SW	N	N	SE	SE
Wind speed (Beaufort scale)	1	2	2	1	1	1	1	2	2	3
Sea condition	moderate	moderate	moderate	calm	calm	calm	calm	moderate	moderate	moderate
Total catch in pounds	400	75	300	15	200	200	300	1000	75	30
Catch breakdown in pounds:										
Brown shrimp (count/lb.)*	---	---	---	---	---	---	---	---	---	---
Pink shrimp (count/lb.)*	2 (15)	2 (17)	.25	---	---	---	.5 (25)	---	---	---
White shrimp (count/lb.)*	---	---	---	---	---	---	---	---	---	---
Red shrimp (count/lb.)*	---	---	---	---	---	---	---	---	---	---
Red snapper	1	1	---	1	---	---	---	---	---	---
Most abundant species	sponge	scorpenids	sponge	---	sponge	---	sea urchins	sponge	scorpenids	macrourids
Scrap	400	70	300	15	200	200	300	1000	75	30

*Heads-on

Table 1 - Fishing Log - M/V Oregon, 1950 - 1951 (continued)

Station number	258	259	260	261	262	263	264	265	266	267
Date	1/28/51	1/28/51	2/14/51	2/14/51	2/15/51	2/16/51	2/16/51	2/16/51	2/16/51	2/17/51
North latitude	30-09	30-14	29-42	29-21	29-14.5	29-22	29-27	29-20	29-17.5	29-26.5
West longitude	88-06.5	88-08.5	88-25.5	88-26	88-20	88-06	87-45	87-42	87-40	87-35
Depth in fathoms	8	4	21	30	49	45	37	101	185-200	40
Gear used	100'F	100'F	100'F	100'F	H.L.	100'F	40'F	40'F	40'F	H.L.
Hour start	1243	1408	1905	2220	1800	1415	1718	1845	2015	1800
Hour finish	1345	1518	2005	2320	1200	1440	1738	1925	2115	0800
Minutes fishing	60	60	60	60	240	15	15	30	30	600
Bottom type	---	S.	S.M.	S.Sh.M.	rky.	S.Sh.	S.	br.M.	gy.M.	rky.
Bottom condition	clear	clear	clear	clear	lump	clear	clear	clear	clear	lump
Gear damage	---	---	---	---	---	---	---	---	---	---
Air temperature (F)	62	62	62	62	64	66	62	64	62	60
Surface temperature (F)	58	58	61	62	62	64	64	66	66	65
Bottom temperature (F)	58	58	62.2	65.3	62.6	60	64.4	59	52.7	60.8
Wind direction	SE	SE	SE	SE	SE	NW	NW	NE	SE	E
Wind speed (Beaufort scale)	3	3	1	2	3	2	1	3	3	2
Sea condition	moderate	heavy	heavy	heavy	heavy	moderate	moderate	moderate	moderate	moderate
Total catch in pounds	200	250	418	752	250	50	65	150	18	350
Catch breakdown in pounds:										
Brown shrimp (count/lb.)*	---	---	58 (11)	52 (11)	---	---	---	---	---	---
Pink shrimp (count/lb.)*	---	---	---	---	---	---	---	---	---	---
White shrimp (count/lb.)*	10 (19)	---	---	---	---	---	---	---	---	---
Red shrimp (count/lb.)*	---	---	---	---	---	---	---	---	2	---
Red snapper	---	---	---	---	225	---	---	---	---	120
Most abundant species	croakers	croakers	croakers	pinfish	snapper	porgies	sea robins	sea urchins	macrourids	grouper
Scrap	190	250	174	700	0	50	65	150	16	10
Station number	268	269	270	271	272	273	274	275	276	277
Date	2/17/51	2/17/51	2/17/51	2/18/51	2/18/51	2/18/51	2/19/51	2/19/51	2/23/51	2/23/51
North latitude	29-28	29-27.5	29-23	29-24	29-16	29-09	29-35	29-29	29-03	28-48
West longitude	87-28	87-26.5	87-25	86-56	86-39	85-59	85-16.5	85-10	84-24	85-40
Depth in fathoms	110	150	220	300	216	110	6	12	15	104
Gear used	60'E	40'F	40'F	40'F	40'F	40'F	40'F	40'F	40'F	40'F
Hour start	1400	1540	1735	1305	1650	2210	1245	1600	1410	2145
Hour finish	1530	1635	1915	1510	1830	2320	1330	1700	1420	2240
Minutes fishing	60	30	60	60	60	60	30	60	5	30
Bottom type	gn.M.	gy.M.	gy.M.	gy.M.	gn.M.	gn.M.Sh.	br.M.	br.M.	Co. S. Sp.	gy.M.
Bottom condition	(bogged)	clear	clear	slope	slope	clear	clear	clear	hilly	clear
Gear damage	8	---	---	12	---	---	---	---	4	---
Air temperature (F)	68	68	64	78	58	66	76	75	68	62
Surface temperature (F)	62	62	62	67	67	67	61	61	64	66
Bottom temperature (F)	58.1	56.1	49.6	---	50	57.2	61	61	64.4	57.9
Wind direction	SE	SE	SE	SE	SE	SE	SE	SE	SE	NE
Wind speed (Beaufort scale)	1	1	1	3	2	2	2	2	1	1
Sea condition	moderate	moderate	calm	moderate	moderate	moderate	calm	calm	moderate	calm
Total catch in pounds	6	98	146	3	15	70	250	200	30	54
Catch breakdown in pounds:										
Brown shrimp (count/lb.)*	---	---	---	---	---	---	---	---	---	---
Pink shrimp (count/lb.)*	---	---	---	---	---	---	2 (35)	---	---	---
White shrimp (count/lb.)*	---	---	---	---	---	---	2 (15)	---	---	---
Red shrimp (count/lb.)*	---	4.5	2	1 (15)	---	.2	---	3 (15)	---	---
Red snapper	---	---	---	---	---	---	---	---	---	---
Most abundant species	flounder	macrourids	sea squirts	limpatus	hake	Peristedion	grunts	grunts	sponge	Peristedion
Scrap	6	93	144	2	15	70	247	197	30	54

* Heads-on

Table 1 - Fishing Log - M/V Oregon, 1950 - 1951 (continued)

Station number	278	279	280	281	282	283	284	285	286	287
Date	2/24/51	2/24/51	2/25/51	2/25/51	2/26/51	2/26/51	2/26/51	2/26/51	2/26/51	2/26/51
North latitude	28-49	29-11	29-26	29-38	29-16	29-11.5	29-16	29-17	29-20	29-20
West longitude	85-45	86-52.5	87-33	87-16.5	88-20	88-37	88-30	88-40.5	88-42	88-42
Depth in fathoms	112	305	36	112	32	41	39	34	30	30
Gear used	68'W	40'F	F.T.	65'W	H.L.	74'B	74'B	74'B	74'B	74'B
Hour start	2320	1430	2120	1610	1230	1605	1650	1830	2005	2120
Hour finish	0040	1710	0700	1810	1540	1620	1800	1940	2100	2235
Minutes fishing	60	120	580	90	150	15	60	60	60	60
Bottom type	gy.M.	gn.M.	Co.R.	gy.M.	rky.M.	gy.M.	gy.M.	bu.M.	bu.M.	bu.M.
Bottom condition	clear	slope	lump	clear	lump	clear	clear	clear	clear	clear
Gear damage	---	---	---	---	---	12	---	---	---	---
Air temperature (F)	62	68	68	66	70	68	68	68	68	60
Surface temperature (F)	65	66	66	66	65	65	65	65	65	65
Bottom temperature (F)	57.2	---	61.7	58.1	59.5	58.4	58.4	59.3	59.3	59.3
Wind direction	NE	SE	SE	SE	SE	SE	SE	SE	SE	SE
Wind speed (Beaufort scale)	1	1	1	3	3	2	2	2	2	1
Sea condition	calm	calm	calm	calm	calm	calm	moderate	moderate	moderate	moderate
Total catch in pounds	182	241	75	242	10	0	697	661	296	326
Catch breakdown in pounds:										
Brown shrimp (count/lb.)*	---	---	---	---	---	---	12 (11)	61 (10)	26 (14)	56 (13)
Pink shrimp (count/lb.)*	---	---	---	---	---	---	---	---	---	---
White shrimp (count/lb.)*	---	---	---	---	---	---	---	---	---	---
Red shrimp (count/lb.)*	---	1	---	---	---	---	---	---	---	---
Red snapper	---	---	30	---	10	---	---	---	---	---
Most abundant species	<u>Peristedion</u>	heke	red snapper	<u>Apogon</u>	red snapper	---	white trout	white trout	white trout	white trout
Scrap	182	240	0	242	0	0	685	600	270	270

Station number	288	289	290	291	292	293	294	295	296	297
Date	2/27/51	2/27/51	3/31/51	3/31/51	3/31/51	4/4/51	4/4/51	4/4/51	4/4/51	4/6/51
North latitude	29-15.5	29-15.5	30-15.7	29-51	29-21	28-51	28-44.5	28-41	28-37	28-05.5
West longitude	88-48	88-48	88-19	88-19.5	88-18	89-36	91-48	91-49	91-52	91-00
Depth in fathoms	34	34	2	18	33	40	15	17	20	51
Gear used	65'W	65'W	100'F	100'F	100'F	100'F	40'F	40'F	40'F	H.L.
Hour start	1800	2025	1030	1530	1955	0915	2120	2217	2326	0910
Hour finish	2010	2220	1100	1642	2115	0955	2155	2255	0005	1550
Minutes fishing	120	105	30	60	60	30	30	30	30	360
Bottom type	M.	M.	gy.M.	gy.M.	gy.M.	bu.M.	bu.M.	Co.R.M.	bu.M.	Co.R.
Bottom condition	(bogged)	(bogged)	clear	clear	clear	clear	clear	rough	hilly	lump
Gear damage	9	9	---	---	---	---	---	6	---	---
Air temperature (F)	63	63	74	64	74	56	64	64	70	74
Surface temperature (F)	64	64	62	63	64	64	64	66	66	70
Bottom temperature (F)	64	64	62.6	62.3	64.2	64.4	66.9	66	63.5	68.7
Wind direction	ESE	ESE	S	S	SE	SE	SE	E	E	SW
Wind speed (Beaufort scale)	1	1	1	2	2	4	4	2	2	1
Sea condition	moderate	moderate	calm	calm	calm	calm	calm	moderate	moderate	very rough
Total catch in pounds	1500	60	150	515	260	146	73	10	20	140
Catch breakdown in pounds:										
Brown shrimp (count/lb.)*	150 (11)	18 (12)	---	4 ea.	31 (10)	26 (11)	8 (14)	---	8 (12)	---
Pink shrimp (count/lb.)*	---	---	---	---	---	---	---	---	---	---
White shrimp (count/lb.)*	---	---	1	---	---	---	---	---	---	---
Red shrimp (count/lb.)*	---	---	---	---	---	---	---	---	---	---
Red snapper	---	---	---	---	---	---	1	1	---	52
Most abundant species	croakers	croakers	blue crabs	croakers	lizard fish	croakers	porgies	---	sea robins	snapper
Scrap	1350	42	149	515	229	120	65	10	12	1

* Heads-on

Table 1 - Fishing Log - M/V Oregon, 1950 - 1951 (continued)

Station number	298	299	300	301	302	303	304	305	306	307
Date	4/6/51	4/6/51	4/6/51	4/6/51	4/6/51	4/7/51	4/8/51	4/8/51	4/22/51	4/22/51
North latitude	28-06.5	28-10	28-10	28-15	28-15	27-57	29-28	29-28	29-19	29-00
West longitude	91-06	91-06.5	91-13	91-14.5	91-21.5	92-02	88-55	88-55	88-36	88-35
Depth in fathoms	58	50	50	40	40	48	8	8	35	220
Gear used	40'F	40'F	40'F	40'F	40'F	H.L.	40'F	100'F	100'F	100'F
Hour start	1652	1755	1905	2030	2147	1130	1420	1525	1648	2004
Hour finish	1730	1830	1950	2107	2230	1540	1445	1645	1748	2210
Minutes fishing	30	30	45	30	30	120	15	60	45	60
Bottom type	M.	M.	M.	M.	M.	Co.R.	S.M.	S.M.	---	M.
Bottom condition	(bogged)	clear	(bogged)	clear	clear	lump	clear	clear	clear	slope
Gear damage	1	---	8	---	---	---	---	---	---	---
Air temperature (F)	70	70	68	68	68	68	74	74	69	66
Surface temperature (F)	69	69	68.5	69	69	68	67	67	68	67
Bottom temperature (F)	63.5	64.4	66.2	66.5	66.5	66.2	67	67	65.8	49.8
Wind direction	SE	SE	E	E	E	N	NW	NW	SW	S
Wind speed (Beaufort scale)	2	2	2	1	1	3	2	1	1	1
Sea condition	rough	rough	rough	rough	rough	rough	rough	moderate	moderate	moderate
Total catch in pounds	0	30	0	32	35	40	40	350	553	200
Catch breakdown in pounds:										
Brown shrimp (count/lb.)*	---	1 (9)	---	2 (9)	3 (9)	---	---	---	13 (11)	---
Pink shrimp (count/lb.)*	---	---	---	---	---	---	1	---	---	---
White shrimp (count/lb.)*	---	---	---	---	---	---	---	---	---	---
Red shrimp (count/lb.)*	---	---	---	---	---	---	---	---	---	10
Red snapper	---	---	---	---	---	40	---	---	---	---
Most abundant species	---	porgies	---	porgies	porgies	red snapper	croakers	croakers	porgies	macrourids
Scrap	0	29	0	30	32	0	39	350	540	190

Station number	308	309	310	311	312	313	314	316	317	318
Date	4/26/51	4/26/51	4/26/51	4/26/51	4/26/51	4/27/51	4/27/51	4/27/51	4/28/51	4/28/51
North latitude	29-53.5	29-53.5	29-53.5	29-53.5	29-21.5	29-22	29-15.5	29-27	29-28	29-25
West longitude	88-22	88-22	88-22	88-22	88-04.5	88-06.5	87-53	87-35	87-37	87-26
Depth in fathoms	18	18	18	18	46	43	175	36	32	104
Gear used	100'F	I.O.T.	I.O.T.	40'b V-D	H.L.	100'F	100'F	H.L.	100'F	100'F
Hour start	1240	1411	1532	1735	0900	1330	1600	2000	0817	1022
Hour finish	1345	1525	1645	1815	1300	1405	1730	0730	0847	1125
Minutes fishing	60	60	60	30	240	30	60	180	30	30
Bottom type	M.	M.	M.	M.	rky.	S.M.Sh.	bu.M.	rky.	S.Co.Gv.	M.
Bottom condition	clear	clear	clear	clear	lump	clear	slope	lump	clear	(bogged)
Gear damage	---	16	---	12	---	---	---	---	---	8
Air temperature (F)	72	67	67	67	70	68	72	70	72	71
Surface temperature (F)	70	70	70	70	71	72	72.5	72	73	72
Bottom temperature (F)	66.2	66.2	66.2	66.2	67.9	66.9	50.3	68.7	65.4	57.9
Wind direction	SE	SE	SE	SE	E	E	ENE	E	E	ESE
Wind speed (Beaufort scale)	2	2	2	2	2	1-2	1	2	2	2
Sea condition	calm	calm	calm	calm	calm	calm	calm	calm	calm	calm
Total catch in pounds	1445	0	18	240	478	133	214	104	80	0
Catch breakdown in pounds:										
Brown shrimp (count/lb.)*	4 (15)	---	---	3 (15)	---	1	---	---	---	---
Pink shrimp (count/lb.)*	1 ea.	---	---	---	---	---	---	---	---	---
White shrimp (count/lb.)*	1 ea.	---	---	---	---	---	---	---	---	---
Red shrimp (count/lb.)*	---	---	---	---	---	---	---	---	---	---
Red snapper	---	---	---	---	390	---	---	70	.5	---
Most abundant species	croakers	---	croakers	croakers	red snapper	porgies	hake	red snapper	porgies	---
Scrap	1440	0	18	237	4	132	214	4	80	0

*Heads-on

Table 1 - Fishing Log - M/V Oregon, 1950 - 1951 (continued)

Station number	319	321	322	323	324	325	326	327	328	329
Date	4/28/51	4/28/51	4/28/51	4/29/51	4/29/51	4/30/51	4/30/51	4/30/51	4/30/51	4/30/51
North latitude	29-20	29-27	29-26.5	29-33	29-36	29-51	29-57	30-04	30-04	30-03
West longitude	87-25	87-19	87-30	87-30	87-21.5	87-05	86-57.5	86-55	86-48.5	86-48.5
Depth in fathoms	315-340	220	39	38	42	108	82	54	27	42
Gear used	40'F	100'F	H.L.	100'F	H.L.	40'F	40'F	40'F	H.L.	100'F
Hour start	1250	1630	2035	1122	1805	1040	1322	1527	1720	1903
Hour finish	1530	1817	0952	1205	0835	1130	1410	1650	1845	2020
Minutes fishing	120	60	240	30	180	30	30	60	90	60
Bottom type	---	---	---	S.	S.Sh.rky.	bu.gy.M.	gy.M.	---	S.Sh.	S.M.
Bottom condition	clear	clear	lump	rough	lump	clear	clear	shelf	shelf	clear
Gear damage	---	---	---	6	---	---	---	2	---	---
Air temperature (F)	72	76	79	76	72	72	72	72	72	72
Surface temperature (F)	73	74	71	72	71	72	72	73	71	70
Bottom temperature (F)	---	50.1	67.1	66.5	68	57.9	59	61.8	66.2	65.6
Wind direction	ESE	E	E	ESE	ESE	E	E	E	SE	SE
Wind speed (Beaufort scale)	2	1	2	1	3	3	3	3	3	3
Sea condition	calm	calm	calm	calm	moderate	calm	moderate	moderate	moderate	moderate
Total catch in pounds	65	310	186	0	125	60	60	0	14	1360
Catch breakdown in pounds:										
Brown shrimp (count/lb.)*	---	---	---	---	---	---	---	---	---	---
Pink shrimp (count/lb.)*	---	---	---	---	---	---	---	---	---	---
White shrimp (count/lb.)*	---	---	---	---	---	---	---	---	---	---
Red shrimp (count/lb.)*	15	7	---	---	---	---	---	---	---	---
Red snapper	---	---	101	---	25	---	---	---	12	---
Most abundant species	hake	tunicates	red snapper	---	red snapper	scorpaenids	scorpaenids	---	red snapper	croakers
Scrap	50	303	0	0	70	60	60	0	2	1360

Station number	330	331	332	333	334	335	336	337	338	340
Date	5/1/51	5/4/51	5/5/51	5/5/51	5/5/51	5/5/51	5/6/51	5/6/51	5/6/51	5/7/51
North latitude	29-59	30-03	30-02.5	30-04	30-03	30-03	29-24.2	29-18	29-12	28-50
West longitude	87-05	86-56	86-53	86-53	86-48	86-48	88-02.4	88-16	88-35.5	89-33
Depth in fathoms	29	60	60	52	57	57	40	43	32	43
Gear used	H.L.	100'F	40'F	40'F	40'F	100'F	H.L.	40'F	H.L.	40'F
Hour start	0900	1220	0915	1045	1305	1410	0700	1610	1940	1335
Hour finish	1050	1315	1000	1135	1400	1520	1345	1700	0845	1415
Minutes fishing	110	30	30	30	30	60	360	30	240	30
Bottom type	---	---	---	---	---	---	rky.	---	rky.	---
Bottom condition	lump	clear	clear	clear	clear	clear	lump	clear	lump	clear
Gear damage	---	---	---	---	---	8-17	---	---	---	---
Air temperature (F)	71	75	71	71	77	71	71	81	81	70
Surface temperature (F)	72	73	73	73	72	72	74	75	73.5	73
Bottom temperature (F)	65.5	59.8	59.8	60.8	61.7	61.7	66	66.2	65.4	65.3
Wind direction	SE	W	NW	NW	W	W	E	E	E	NE
Wind speed (Beaufort scale)	3	4	1	3	4	4	2	1	1	4
Sea condition	moderate	rough	rough	moderate	rough	rough	moderate	calm	moderate	moderate
Total catch in pounds	50	113	120	75	60	0	1000	20	305	84
Catch breakdown in pounds:										
Brown shrimp (count/lb.)*	---	4 (7)	.5 (9)	2 (8)	2 (10)	---	---	4 (9)	---	27 (11)
Pink shrimp (count/lb.)*	---	---	---	---	---	---	---	---	---	---
White shrimp (count/lb.)*	---	---	---	---	---	---	---	---	---	3 ea.
Red shrimp (count/lb.)*	---	---	---	---	---	---	---	---	---	---
Red snapper	30	---	---	---	---	---	600	---	155	---
Most abundant species	red snapper	porgies	porgies	porgies	---	---	red snapper	scorpaenids	red snapper	sea bass
Scrap	3	109	119	72	57	0	83	16	135	57

* Heads-on

Table 1 - Fishing Log - M/V Oregon, 1950 - 1951 (continued)

Station number	341	342	343	344	345	346	347	348	349	351
Date	5/7/51	5/7/51	5/7/51	5/8/51	5/8/51	5/9/51	5/9/51	5/21/51	5/22/51	5/22/51
North latitude	28-50	28-50	28-43	28-40	28-51	28-50	28-50	30-11.5	29-09	29-13.3
West longitude	89-33	89-33	89-39	89-49.5	89-37	89-37	89-37	88-32	87-58	88-00
Depth in fathoms	43	43	50	42	40	40	40	7	470-500	200
Gear used	40'BL	40'BL	40'F	H.L.	100'F	100'F	74'B	40'F	40'F	40'F
Hour start	1425	1535	1718	1025	1530	0718	0955	1607	0720	1052
Hour finish	1520	1615	1752	1250	1552	0925	1205	1645	0955	1220
Minutes fishing	30	30	30	15	120	120	120	30	60	60
Bottom type	---	---	---	---	---	---	---	S.M.	bu.M.	bu.M.
Bottom condition	clear	clear	sunken ship?	lump	clear	clear	clear	clear	clear	clear
Gear damage	---	---	1	---	17	---	---	---	---	---
Air temperature (F)	70	70	70	70	70	74	74	76	79	79
Surface temperature (F)	73	73	73	74	71	73	73	75	76	76.5
Bottom temperature (F)	65.3	65.3	62.2	64.4	65.3	65.3	65.3	74.5	---	50
Wind direction	NE	NE	NE	NE	ENE	SE	SE	S	S	S
Wind speed (Beaufort scale)	4	4	4	5	4	2	2	3	2	3
Sea condition	moderate	heavy	heavy	very heavy	very heavy	heavy	heavy	moderate	moderate	moderate
Total catch in pounds	24	53	0	110	0	1225	1025	55	40	100
Catch breakdown in pounds:										
Brown shrimp (count/lb.)*	6 (11)	23 (11)	---	---	---	85 (12)	50 (12)	---	---	---
Pink shrimp (count/lb.)*	---	---	---	---	---	---	---	---	---	---
White shrimp (count/lb.)*	---	1 ea.	---	---	---	---	---	2 ea.	---	---
Red shrimp (count/lb.)*	---	---	---	---	---	---	---	---	---	20
Red snapper	---	---	---	61	---	2	---	---	---	---
Most abundant species	silver eels	porgies	---	red snapper	---	silver eels	croakers	sanchovies	macrourids	sea squirts
Scrap	18	30	0	20	0	1140	975	55	40	80

Station number	353	354	355	356	357	358	359	360	361	362
Date	5/25/51	5/25/51	5/25/51	5/25/51	5/25/51	5/25/51	5/26/51	5/27/51	5/27/51	5/27/51
North latitude	30-01.7	30-02.5	30-02.4	29-51	30-01	30-06.5	29-12	29-12	29-34.5	28-38
West longitude	86-55.5	86-48	86-40	86-32.5	86-30	86-52	88-35.5	88-35.5	88-43.5	89-33.5
Depth in fathoms	64	65	40	57	25	52	32	35	48	33
Gear used	40'F	40'F	40'F	40'F	40'F	40'F	H.L.	F.T.	H.L.	H.L.
Hour start	0738	0902	1030	1300	1610	1852	1930	1930	1130	2320
Hour finish	0815	0940	1115	1335	1650	1933	2400	0825	1630	0230
Minutes fishing	30	30	30	30	30	30	270	780	300	80
Bottom type	gy.gn.M.	gy.gn.M.	S.M.	gy.M.S.	Co.Sn.Gv.	gy.M.S.	rky.M.	rky.M.	rky.M.	R.
Bottom condition	clear	clear	clear	clear	clear	clear	lump	lump	lump	lump
Gear damage	---	---	---	---	---	---	---	1 lost	---	---
Air temperature (F)	73	73	70	72	72	71	76	76	80	76
Surface temperature (F)	74	74	74	75	74	74	75	75	76	77
Bottom temperature (F)	56.6	59	65.1	65.3	67.1	60.8	66.5	66.5	63.5	62.1
Wind direction	E	E	S	S	S	E	SW	W	W	W
Wind speed (Beaufort scale)	2	2	3	3	3	3	1	1	1-2	2
Sea condition	calm	calm	calm	calm	moderate	moderate	heavy	heavy	moderate	moderate
Total catch in pounds	80	61	150	41	50	150	131	11	77	367
Catch breakdown in pounds:										
Brown shrimp (count/lb.)*	1 ea.	1 (9)	---	1 (9)	---	11 (9)	---	---	---	---
Pink shrimp (count/lb.)*	---	---	---	---	---	---	---	---	---	---
White shrimp (count/lb.)*	---	---	---	---	---	---	---	---	---	---
Red shrimp (count/lb.)*	---	---	---	---	---	---	---	---	---	---
Red snapper	---	---	---	---	---	---	111	10	42	210
Most abundant species	porgies	goatfish	sand dollars	goatfish	razor fish	goatfish	red snapper	red snapper	red snapper	red snapper
Scrap	80	60	150	40	50	139	20	1	35	114

* Heads-on

Table 1 - Fishing Log - M/V Oregon, 1950 - 1951 (continued)

Station number	363	364	365	366	367	368	369	370	371	372
Date	5/28/51	5/28/51	5/29/51	5/29/51	5/30/51	5/30/51	5/30/51	5/30/51	5/30/51	5/31/51
North latitude	28-46	28-39.7	28-26.5	27-56	27-59	27-59	28-00.5	28-00.5	28-04.5	27-57
West longitude	89-41.5	89-49.5	90-15.7	91-29	91-39	91-39	91-45	91-45.5	91-51.5	92-00
Depth in fathoms	44	48	30	45	34	34	48	48	48	32
Gear used	40'F	H.L.	40'F	H.L.	F.T.	H.L.	F.T.	H.L.	H.L.	F.T.
Hour start	0834	1045	1005	1830	0822	0900	1220	1300	1800	1530
Hour finish	0940	1900	1050	0800	1127	1100	1507	1600	2000	1845
Minutes fishing	60	495	30	240	180	120	165	180	120	195
Bottom type	M.	Co.R.	M.	R.Co.M.	R.	R.	H.Co.	Co.R.M.	Co.rky.	Co.M.
Bottom condition	clear	lump	clear	lump	lump	lump	lump	lump	lump	lump
Gear damage	---	---	---	---	---	---	---	---	---	---
Air temperature (F)	76	78	77	83	78	78	78	78	77	83
Surface temperature (F)	77	79	79	76	77	77	79	79	79	79
Bottom temperature (F)	64	62	66.2	66.2	67.8	67.8	65.8	65.8	66	66
Wind direction	NW	SW	W	SW	W	W	W	W	SW	S
Wind speed (Beaufort scale)	2	2	1	1	1	1	1	1	1	1
Sea condition	calm	calm	calm	calm	calm	calm	calm	calm	calm	calm
Total catch in pounds	100	1407	178	453	15	112	18	70	57	0
Catch breakdown in pounds:										
Brown shrimp (count/lb.)*	15 (10)	---	3 (11)	---	---	---	---	---	---	---
Pink shrimp (count/lb.)*	---	---	---	---	---	---	---	---	---	---
White shrimp (count/lb.)*	---	---	---	---	---	---	---	---	---	---
Red shrimp (count/lb.)*	---	---	---	---	---	---	---	---	---	---
Red snapper	---	1122	---	335	---	82	18	30	24	---
Most abundant species	porgies	red snapper	sea rob ins	red snapper	amberjack	red snapper	red snapper	red snapper	red snapper	---
Scrap	85	39	175	38	15	0	0	0	0	0

Station number	373	374	375	376	377	378	379	380	381	382
Date	5/31/51	5/31/51	6/1/51	6/1/51	6/1/51	6/6/51	6/7/51	6/8/51	6/8/51	6/21/51
North latitude	27-57	27-57	27-57	28-02	28-02	29-17	28-53	28-57.5	30-11.5	29-11.5
West longitude	92-00	92-03	92-03	92-29	92-29	94-27	88-44.5	88-40.5	88-32	88-07.5
Depth in fathoms	32	47	47	46	49	7	260-280	190	6	190-210
Gear used	H.L.	F.T.	F.T.	F.T.	H.L.	100'F	100'F	40'F	40'F	100'F
Hour start	1615	1845	0905	1800	1730	1500	2125	0045	0850	1620
Hour finish	2030	0800	1345	1810	0300	1600	2400	0152	0925	1800
Minutes fishing	255	780	250	840	550	60	90	30	30	60
Bottom type	R.	Co.R.M.	M.rky.	Co.rky.M.	M.rky.	S.	gy.br.M.	gy.M.	S.Sh.	---
Bottom condition	lump	lump	lump	lump	lump	clear	clear	clear	clear	clear
Gear damage	---	---	---	---	---	11	12	---	---	---
Air temperature (F)	83	80	80	79	79	78	82	76	79	85
Surface temperature (F)	79	79	80	79	80	80	80.5	80.5	81	83.5
Bottom temperature (F)	66	66	66	66	66	78.8	---	48.5	80	---
Wind direction	S	S	SE	SE	SE	---	S	SW	SW	SW
Wind speed (Beaufort scale)	1	1	2	3	2	---	2	2	2	2
Sea condition	calm	calm	calm	moderate	moderate	calm	moderate	moderate	moderate	calm
Total catch in pounds	671	10	10	100	385	40	200	8	75	233
Catch breakdown in pounds:										
Brown shrimp (count/lb.)*	---	---	---	---	---	---	---	---	---	---
Pink shrimp (count/lb.)*	---	---	---	---	---	---	---	---	---	---
White shrimp (count/lb.)*	---	---	---	---	---	1 (12)	---	---	4 ea.	---
Red shrimp (count/lb.)*	---	---	---	---	---	---	.5 (12)	1 (11)	---	76 (15)
Red snapper	340	10	---	47	300	---	---	---	---	---
Most abundant species	red snapper	red snapper	scamp	red snapper	red snapper	silver eels	holothurians	hake	blue crabs	macrourids
Scrap	4	0	0	0	7	39	200	7	75	157

*Heads-on

Table 1 - Fishing Log - M/V Oregon, 1950 - 1951 (continued)

Station number	383	384	385	386	387	388	389	390	391	392
Date	6/21/51	6/21/51	6/22/51	6/22/51	6/22/51	8/8/51	8/8/51	8/8/51	8/8/51	8/8/51
North latitude	29-10	29-10	30-01.5	30-13.5	30-13.5	29-28	29-16	29-14.5	29-14.5	29-14.5
West longitude	88-00	88-00	88-03	88-10	88-10	88-30	88-20	88-36.5	88-36.5	88-36.5
Depth in fathoms	280-310	265-300	12	3	3	25	32	38	38	38
Gear used	40'F	40'F	H.L.	40'BL	40'F	40'F & 40'LW	H.L.	40'F	40'LW	40'BL
Hour start	1830	2020	0715	0920	1012	1525	1800	1945	2030	2112
Hour finish	2000	2135	0748	1000	1040	1600	2000	2020	2105	2158
Minutes fishing	60	30	30	30	30	30	120	45	30	30
Bottom type	---	---	---	---	---	cl.M.S.	R.Vo.S.M.	bu.bk.M.	bu.bk.M.	bu.bk.M.
Bottom condition	clear	clear	milly	clear	clear	clear	lump	clear	clear	clear
Gear damage	---	---	---	---	---	---	---	---	---	---
Air temperature (F)	82	82	82	82	82	82	85	84	84	83
Surface temperature (F)	82	82	79	79	79	84	87	84	83	83
Bottom temperature (F)	---	---	---	82	82	---	66	63.5	63.5	64.4
Wind direction	SW	SW	W	W	W	SSW	SSW	SSW	SSW	SSW
Wind speed (Beaufort scale)	2	2	2-3	2	2	3	4	3	1	1
Sea condition	calm	calm	moderate	calm	calm	calm	moderate	moderate	moderate	moderate
Total catch in pounds	10	0	0	51	200	51	14	24	6	34
Catch breakdown in pounds:										
Brown shrimp (count/lb.)*	---	---	---	0 ea.	7 ea.	8 (9)	---	4 (6)	---	7 (7.5)
Pink shrimp (count/lb.)*	---	---	---	---	---	---	---	---	---	---
White shrimp (count/lb.)*	---	---	---	6 (11)	8 (11)	---	---	---	---	---
Red shrimp (count/lb.)*	---	---	---	---	---	---	---	---	---	---
Red snapper	---	---	---	---	---	---	2	---	---	---
Most abundant species	squid	---	---	croakers	croakers	sea bass	red snapper	porgies	midshipmen	porgies
Scrap	10	0	0	45	192	43	12	20	6	27

Station number	393	394	395	396	397	398	406	407	408	409
Date	8/8/51	8/8/51	8/9/51	8/10/51	8/10/51	8/10/51	8/16/51	8/17/51	8/17/51	8/17/51
North latitude	29-19.5	29-19.5	29-19.5	29-42	29-42	29-42	22-14	21-38	21-38	21-38
West longitude	88-45	88-45	88-45	88-29	88-29	88-29	91-26	92-10.5	92-10.5	92-10.5
Depth in fathoms	30	30	30	20	20	20	50	29	29	29
Gear used	40'BL	40'LW	40'F	40'F	40'LW	40'BL	40'F	40'F	40'BL	40'LW
Hour start	2255	2338	1220	0052	0135	0210	2120	1325	1408	1450
Hour finish	2330	0012	0100	0130	0205	0245	2140	1400	1445	1530
Minutes fishing	30	30	30	30	30	30	15	30	30	30
Bottom type	bk.M.	bk.M.	bk.M.	bu.M.	bu.M.	bu.M.	wh.M.S.	wh.M.	S.M.	vo.S.
Bottom condition	clear	clear	clear	clear	clear	clear	rough	clear	clear	clear
Gear damage	---	---	12	---	---	---	---	---	---	---
Air temperature (F)	83	83	83	84	84	84	84	85	85	85
Surface temperature (F)	82	82	82	82	82	82	84	85	85	85
Bottom temperature (F)	61.7	61.7	61.7	64.4	64.4	62.6	62.2	67.6	69.4	69.8
Wind direction	SSW	SSW	SSW	SSW	SSW	SSW	E	NESE	NESE	NESE
Wind speed (Beaufort scale)	3	2	4	2	4	4	2	1	1	1
Sea condition	moderate	moderate	moderate	moderate	moderate	moderate	moderate	calm	calm	calm
Total catch in pounds	29	10	12	59	47	23	77	47	10	37
Catch breakdown in pounds:										
Brown shrimp (count/lb.)*	3.5	1 (8)	---	8 (10)	9 (17)	6 (10)	---	---	---	---
Pink shrimp (count/lb.)*	---	---	---	---	---	---	1 ea.	1 ea.	---	1 ea.
White shrimp (count/lb.)*	---	---	---	---	---	---	---	---	---	---
Red shrimp (count/lb.)*	---	---	---	---	---	---	---	---	---	---
Red snapper	---	---	---	---	---	---	3	---	---	---
Most abundant species	sea robins	sea robins	sea robins	sea robins	sea robins	porgies	<u>Prionodes</u>	flatfish	flatfish	flatfish
Scrap	25	9	12	51	36	17	74	47	10	37

*Heads-on

Table 1 - Fishing Log - M/V Oregon, 1950 - 1951 (continued)

Station number	411	412	413	415	416	417	419	420	421	423
Date	8/17/51	8/17/51	8/17/51	8/18/51	8/18/51	8/18/51	8/18/51	8/18/51	8/18/51	8/19/51
North latitude	21-15	21-15	21-15	20-45	20-45	20-45	20-20	20-20	20-20	19-36
West longitude	92-16	92-16	92-16	92-12	92-12	92-12	91-55.5	91-55.5	91-55.5	91-47.5
Depth in fathoms	35	35	35	27	27	27	22	22	22	24
Gear used	40'F	40'LW	40'BL	40'F	40'BL	40'LW	40'F	40'BL	40'LW	40'F
Hour start	1838	1922	2110	1625	1715	1756	2152	2240	2322	1433
Hour finish	1915	2005	2150	1710	1750	1830	2235	2315	2357	1510
Minutes fishing	30	30	30	30	30	30	30	30	30	30
Bottom type	S.wh.M.	S.wh.M.	S.wh.M.	S.M.	S.M.	S.M.	S.M.	S.M.	S.M.	S.wh.M.
Bottom condition	clear	clear	clear	clear	clear	clear	clear	clear	clear	clear
Gear damage	---	---	---	---	---	---	---	---	---	---
Air temperature (F)	82	82	82	83	83	82	82	82	82	88
Surface temperature (F)	84	84	84	84	84	84	84	83	82	82.5
Bottom temperature (F)	66.9	66.4	66.6	75.7	75.7	75.9	69.8	69.9	69.8	70.7
Wind direction	NExE	N	NxE	NE	NE	NE	NE	NE	NE	NE
Wind speed (Beaufort scale)	1	1	1	1	1	1	1	1	4	3
Sea condition	moderate	moderate	moderate	moderate	moderate	moderate	moderate	moderate	moderate	moderate
Total catch in pounds	147	48	39	135	41	275	73	42	106	98
Catch breakdown in pounds:										
Brown shrimp (count/lb.)*	---	---	---	---	---	---	---	---	---	---
Pink shrimp (count/lb.)*	---	---	1 ea.	2 (10)	1 (12)	1 (10)	24 (12)	9 (12)	8 (12)	1 ea.
White shrimp (count/lb.)*	---	---	---	---	---	---	---	---	---	---
Red shrimp (count/lb.)*	---	---	---	---	---	---	---	---	---	---
Red snapper	.25	1	---	---	---	---	---	---	---	12
Most abundant species	<u>Prionodes</u>	<u>Prionodes</u>	<u>Prionodes</u>	mojarras	porgies	mojarras	<u>Diplectrum</u>	porgies	<u>Diplectrum</u>	porgies
Scrap	147	46	39	133	40	273	49	32	98	86

Station number	424	425	427	428	429	430	431	432	433	434
Date	8/19/51	8/19/51	8/23/51	8/23/51	8/23/51	8/23/51	8/23/51	8/23/51	8/23/51	8/24/51
North latitude	19-36	19-36	18-47	18-47	18-47	19-16	19-16	19-16	19-20	19-35
West longitude	91-47.5	91-47.5	92-00	92-00	92-00	92-14	92-14	92-14	92-17	92-30.5
Depth in fathoms	24	24	8.5	8.5	8.5	22	22	22	30	100
Gear used	40'LW	40'BL	40'F	40'LW	40'BL	40'BL	40'LW	40'F	40'F	40'F
Hour start	1515	1555	1512	1555	1632	1955	2035	2117	2235	1110
Hour finish	1550	1636	1550	1628	1705	2030	2110	2155	2315	1125
Minutes fishing	30	30	30	30	30	30	30	30	30	1
Bottom type	M.S.	M.S.	br.M.	br.M.	br.M.	bu.M.	bu.M.	bu.M.	bu.M.	---
Bottom condition	clear	clear	clear	clear	clear	clear	clear	clear	clear	rough
Gear damage	---	---	---	---	---	---	---	---	---	1
Air temperature (F)	87	86	93	95	86	82	82	82	82	87
Surface temperature (F)	83	82	83	83	82.5	82	82	82	82	83
Bottom temperature (F)	69.9	70.9	81.3	81.7	81.3	72.5	71.8	72.1	69.6	---
Wind direction	NE	NE	N	N	N	N	N	N	N	N
Wind speed (Beaufort scale)	3	3	1	1	1	2	2	2	2	5
Sea condition	moderate	moderate	moderate	moderate	moderate	moderate	rough	rough	rough	rough
Total catch in pounds	37	9	78	15	37	49	109	112	110	0
Catch breakdown in pounds:										
Brown shrimp (count/lb.)*	---	---	---	---	---	---	10 (13)	9 (13)	3 (12)	---
Pink shrimp (count/lb.)*	2 ea.	---	4 ea.	2 ea.	1 ea.	9 (13)	---	---	---	---
White shrimp (count/lb.)*	---	---	---	---	---	---	---	---	---	---
Red shrimp (count/lb.)*	---	---	---	---	---	---	---	---	---	---
Red snapper	---	.5	---	---	---	---	---	---	---	---
Most abundant species	porgies	lizard fish	flatfish	flatfish	bumpers	<u>Prionodes</u>	<u>Prionodes</u>	flatfish	flatfish	---
Scrap	37	8	78	15	37	40	99	103	107	0

*Heads-on

Table 1 - Fishing Log - M/V Oregon, 1950 - 1951 (continued)

Station number	435	436	437	438	440	441	442	443	444	445
Date	8/24/51	8/24/51	8/24/51	8/24/51	8/25/51	8/25/51	8/25/51	8/25/51	8/25/51	8/26/51
North latitude	20-05.2	20-07	20-08.2	20-08.2	19-48	19-48	19-48	19-48	19-48	19-48
West longitude	91-56.2	91-41.2	91-30	91-30	91-20	91-20	91-20	91-20	91-20	91-20
Depth in fathoms	24	20	20	20	14	14	14	14	14	14
Gear used	H.L.	40°F	40°F	40°BL	100°F	100°F	100°F	100°F	100°F	100°F
Hour start	1700	1925	2110	2158	1840	1930	2044	2217	2355	0138
Hour finish	1745	2000	2150	2230	1920	2035	2205	2350	0135	0330
Minutes fishing	45	30	30	30	30	60	75	90	105	105
Bottom type	rky.M.	Sh.M.	Sh.M.	Sh.M.	Sh.M.	Sh.M.	Sh.M.	Sh.M.	Sh.M.	Sh.M.
Bottom condition	lump	clear	clear	clear	clear	clear	clear	clear	clear	clear
Gear damage	---	---	---	---	---	---	---	---	---	---
Air temperature (F)	87	80	82	79	80	80	80	80	80	80
Surface temperature (F)	83	82	82	82	82.5	82	82	82	82	82
Bottom temperature (F)	70	73.9	75.2	74.7	80.6	80.8	81.7	81.3	81	80.8
Wind direction	NE	NE	NE	NE	N	N	N	N	N	N
Wind speed (Beaufort scale)	1	2	2	2	2	2	2	1	1	1
Sea condition	moderate	moderate	rough	rough	moderate	moderate	moderate	moderate	moderate	moderate
Total catch in pounds	63	189	227	48	381	911	769	1493	2243	1331
Catch breakdown in pounds:										
Brown shrimp (count/lb.)*	---	---	---	---	---	---	---	---	---	---
Pink shrimp (count/lb.)*	---	38 (9)	29 (10)	22 (10)	45 (15)	189 (15)	108 (15)	243 (15)	340 (15)	201 (15)
White shrimp (count/lb.)*	---	---	---	---	1	2	1	3	5	---
Red shrimp (count/lb.)*	---	---	---	---	---	---	---	---	---	---
Red snapper	60	---	---	---	---	---	---	---	---	---
Most abundant species	red snapper	flatfish	flatfish	flatfish	flatfish	<u>Xenopus</u>	<u>Xenopus</u>	<u>Xenopus</u>	<u>Xenopus</u>	<u>Xenopus</u>
Scrap	3	151	198	26	335	730	600	1250	1900	1125

Station number	446	447	448	449	472	474	476	478	480	482
Date	8/26/51	8/26/51	8/26/51	8/27/51	9/6/51	9/6/51	9/6/51	9/6/51	9/7/51	9/7/51
North latitude	20-05	20-05	20-05	20-52.5	29-05	29-05	29-06	29-05	28-58	28-57
West longitude	91-28	91-28	91-28	90-51	88-31	88-28	88-30	88-27	88-39	88-42.5
Depth in fathoms	17.5	17.5	17.5	10	190	28	18	21.5	207	210
Gear used	40°F	40°LW	40°BL	40°LW	74°B	74°B	100°F	100°F	74°B	74°B
Hour start	1855	2015	2127	0435	0827	1000	1355	1722	1020	1300
Hour finish	2000	2120	2225	0515	0955	1310	1700	1900	1300	1600
Minutes fishing	60	60	60	30	60	120	150	120	150	150
Bottom type	Sh.gy.M.	Sh.gy.M.	Sh.gy.M.	wh.S.	bu.M.	wh.M.	wh.M.	gn.M.	gn.M.	gn.M.
Bottom condition	clear	clear	clear	gross	clear	clear	(bogged)	(bogged)	clear	clear
Gear damage	---	---	---	---	---	---	8	9	---	---
Air temperature (F)	82	82	82	80	89	87	86	84	85	88
Surface temperature (F)	82	82	82	78	85	85	80	85	86.5	90
Bottom temperature (F)	75.4	75.7	75.2	77.2	50	50	---	51.4	52	51.4
Wind direction	N	N	N	E	W	E	---	S	---	---
Wind speed (Beaufort scale)	2	2	2	1	1	1	0	1	0	0
Sea condition	moderate	moderate	rough	calm	calm	calm	calm	calm	calm	calm
Total catch in pounds	514	105	60	604	96	478	150	87	356	90
Catch breakdown in pounds:										
Brown shrimp (count/lb.)*	---	---	---	---	---	---	---	---	---	---
Pink shrimp (count/lb.)*	64 (13)	30 (13)	30 (13)	1 (50)	---	---	---	---	---	---
White shrimp (count/lb.)*	---	---	1 ea.	---	---	---	---	---	---	---
Red shrimp (count/lb.)*	---	---	---	---	33	108 (18)	---	7	96 (20)	44
Red snapper	---	---	---	---	---	---	---	---	---	---
Most abundant species	porgies	porgies	porgies	tom tate	macrourids	macrourids	hake	hake	hake	hake
Scrap	450	75	30	603	63	370	150	80	260	46

* Heads-on

Table 1 - Fishing Log - M/V Oregon, 1950 - 1951 (continued)

Station number	483	484	485	486	487	488	489	490	491	492
Date	9/7/51	9/7/51	9/12/51	9/13/51	9/27/51	9/27/51	9/29/51	9/29/51	9/29/51	10/15/51
North latitude	28-58	28-56.5	29-12	29-12	29-35	29-27.5	27-44	27-44	27-49	30-03.5
West longitude	88-40	88-40	88-35.5	88-35.5	87-45	87-40	85-09	85-02	84-59	86-45.5
Depth in fathoms	200	220-240	32	32	22	36	254	215	200	55-60
Gear used	74'BL	74'BL	H.L.	H.L.	40'F	H.L.	40'F	40'F	40'F	74'BL
Hour start	1640	1908	1837	1645	1742	1930	1340	1645	1912	2155
Hour finish	1840	2135	2400	2318	1825	0630	1510	1810	2020	2245
Minutes fishing	90	120	300	360	30	120	60	60	45	30
Bottom type	gn.M.	gn.M.	R.	Co.	S.	R.M.	bu.M.	bu.M.	br.M.	S.M.
Bottom condition	clear	(bogged)	lump	lump	clear	lump	clear	slope	clear	clear
Gear damage	---	8	---	---	---	---	---	---	---	17
Air temperature (F)	90	84	81	80	77	79	79	79	77	73
Surface temperature (F)	88	88	85.5	84	81	82	82.5	82.5	82	77
Bottom temperature (F)	51.4	49.8	70.2	69.6	65.3	65.3	---	51.8	52.2	58.1
Wind direction	---	---	SSE	SSE	NE	NE	ENE	ESE	E	ExN
Wind speed (Beaufort scale)	0	0	4	4	2	3	4	5	5	5
Sea condition	calm	calm	moderate	rough	moderate	moderate	rough	rough	rough	rough
Total catch in pounds	210	180	54	75	55	61	49	74	21	55
Catch breakdown in pounds:										
Brown shrimp (count/lb.)*	---	---	---	---	4 (7)	---	---	---	---	4 (4)
Pink shrimp (count/lb.)*	---	---	---	---	---	---	---	---	---	---
White shrimp (count/lb.)*	---	---	---	---	---	---	---	---	---	---
Red shrimp (count/lb.)*	9	42	---	---	---	---	2	4	---	---
Red snapper	---	---	15	25	---	36	---	---	---	---
Most abundant species	hake	hake	red snapper	red snapper	porgies	red snapper	hake	hake	hake	porgies
Scrap	201	138	2	0	51	25	47	70	21	50

Station number	493	494	495	496	497	498	499	500	501	502
Date	11/9/51	11/9/51	11/9/51	11/9/51	11/9/51	11/9/51	11/9/51	11/11/51	11/11/51	11/11/51
North latitude	28-58.5	28-56.5	28-55	28-50	28-48	28-39.7	28-04.5	27-50	27-51	27-50.7
West longitude	89-33.5	89-33.5	89-34	89-35	89-37	89-49	90-57.5	91-11	91-32.5	91-50
Depth in fathoms	30	30	34	40	45	50	54	205	220	56
Gear used	40'F	40'F	40'F	40'F	40'F	H.L.	H.L.	40'F	40'F	H.L.
Hour start	0826	0845	0945	1108	1220	1512	1730	1000	1330	1700
Hour finish	0830	0920	1028	1145	1300	1812	0730	1100	1425	0730
Minutes fishing	4	30	30	30	30	180	195	30	30	180
Bottom type	sft.M.	sft.M.	M.	M.	M.	R.	R.	M.	M.	R.
Bottom condition	(bogged)	clear	clear	clear	clear	lump	lump	clear	clear	lump
Gear damage	1	---	---	---	---	---	---	---	---	---
Air temperature (F)	60	60	68	68	64	68	70	72	90	75
Surface temperature (F)	66.5	66.5	68	69.5	70	70	76	76.5	76.5	76
Bottom temperature (F)	72.5	71.8	70.7	68.9	67.6	65.6	67.8	50.5	50	67.1
Wind direction	N	N	N	NE	NNE	NE	NE	NE	NE	N
Wind speed (Beaufort scale)	3	3	2	2	2	4	3	2	2	2
Sea condition	moderate	moderate	moderate	moderate	moderate	moderate	rough	moderate	moderate	moderate
Total catch in pounds	0	96	127	98	107	298	85	20	20	192
Catch breakdown in pounds:										
Brown shrimp (count/lb.)*	---	22 (22)	27 (17)	28 (13)	19 (12)	---	---	---	---	---
Pink shrimp (count/lb.)*	---	---	---	---	---	---	---	---	---	---
White shrimp (count/lb.)*	---	---	---	---	---	---	---	---	---	---
Red shrimp (count/lb.)*	---	---	---	---	---	---	---	---	---	---
Red snapper	---	---	---	---	---	128	49	---	.5	---
Most abundant species	---	croakers	white trout	white trout	sea robins	red snapper	red snapper	green eyes	macrourids	red snapper
Scrap	0	74	100	70	88	0	0	20	19	50

* Heads-on

Table 1 - Fishing Log - M/V Oregon, 1950 - 1951 (continued)

Station number	503	504	505	506	507	508	509	510	511	512
Date	11/18/51	11/19/51	11/19/51	11/19/51	11/19/51	11/19/51	11/19/51	11/19/51	11/20/51	11/20/51
North latitude	27-48.5	28-19	28-28	28-37	28-45	29-10	29-05	28-50	28-37	29-59
West longitude	94-39	93-37	93-28	93-19.5	93-13	92-50.5	92-17.5	92-04	91-55	89-08
Depth in fathoms	200	33	25	20	15	16	10	14	15	3
Gear used	40'F	40'F	40'F	40'F	40'F	40'F	40'F	40'F	40'F	40'F
Hour start	2000	0615	0809	0955	1135	1530	1900	2120	0055	1605
Hour finish	2050	0650	0947	1030	1200	1600	1930	2152	0130	1645
Minutes fishing	30	30	30	30	30	30	30	30	30	30
Bottom type	M.	M.	M.	M.	M.Sh.	M.Sh.	M.S.	M.	M.	S.M.
Bottom condition	clear	clear	clear	clear	clear	clear	clear	clear	clear	clear
Gear damage	---	---	---	---	---	---	---	---	---	---
Air temperature (F)	50	55	56	55	53	50	51	52	52	59
Surface temperature (F)	74	72	72	71	70	67	62	67	69	61
Bottom temperature (F)	50.9	73.7	73	72.3	72.5	68	63.3	68	68.9	61
Wind direction	N	NE	NE	NE	NE	NE	NE	NE	NE	NE
Wind speed (Beaufort scale)	2	3	2	3	3	3	3	3	2	4
Sea condition	moderate	moderate	moderate	moderate	moderate	moderate	moderate	moderate	rough	rough
Total catch in pounds	30	75	25	15	40	280	236	112	30	20
Catch breakdown in pounds:										
Brown shrimp (count/lb.)*	---	9 (7)	4 (15)	.5	---	1 ea.	---	---	3	---
Pink shrimp (count/lb.)*	---	---	---	---	---	---	---	---	---	---
White shrimp (count/lb.)*	---	---	---	---	---	---	---	---	---	---
Red shrimp (count/lb.)*	.5	---	---	---	---	---	7.5	12 (10)	---	---
Red snapper	---	2.5	---	---	1	---	---	---	---	---
Most abundant species	macrourids	porgies	sea robins	porgies	porgies	brockers	brockers	brockers	porgies	brockers
Scrap	30	64	21	14	40	180	228	100	27	20

* Heads-on

Gear used - abbreviations:

- 40'F..... 40' flat shrimp trawl*
- 40'B..... 40' balloon shrimp trawl
- 40'BL..... 40' bottomless shrimp trawl (experimental)
- 40'LW..... 40' long wing shrimp trawl (experimental)
- 55'F..... 55' flat shrimp trawl
- 60'E..... 60' fish trawl (experimental)
- 65'W..... 65' wedge shrimp trawl
- 74'B..... 74' balloon shrimp trawl*
- 100'F..... 100' flat shrimp trawl*
- F.T..... fish traps
- G.N..... gill nets
- H.L..... handlines

Gear damage - symbols:

- 1 - complete loss of trawl and doors
- 2 - complete loss of trawl
- 3 - complete loss of webbing, lines saved
- 4 - severe loss of webbing
- 5 - small amount of webbing lost
- 6 - webbing torn or cut
- 7 - hankline ripped or pulled
- 8 - entire net saved by lazy-line
- 9 - tail saved by lazy line
- 10 - gear didn't reach bottom
- 11 - gear fouled, reason unknown
- 12 - doors twisted
- 13 - trawl damaged while hoisting aboard
- 14 - sharks bites
- 15 - winch trouble
- 16 - lines parted
- 17 - trawl torn due to heavy seas

* Fishery Leaflet 394 covers the complete construction details of these trawls.