

---

## Photo Supplement

This supplement to Chapter 1 presents a photo collection of salmon can labels, wooden crates, and a cannery company logo. These items were used by historic salmon canneries that harvested and canned Karluk River sockeye salmon.

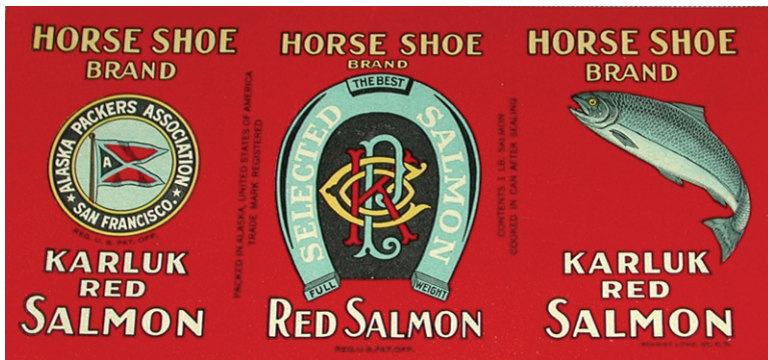
Selected Salmon can label, put up by Karluk Packing Co., Karluk, Kodiak Island, Alaska. (Ralph and Terry Kovel, *The Label Made Me Buy It*, Crown Publishers, NY, 1998)



Selected Salmon can, put up by Karluk Packing Co., Karluk, Kodiak Island, Alaska. (Karen Hofstad Collection, Petersburg, AK)



Karluk Packing Co. sockeye salmon crate, Horse Shoe Brand, Alaska Packers Association, San Francisco. (National Park Service, San Francisco Maritime National Historical Park, San Francisco, CA, SAFR 19302)



Horse Shoe Brand salmon can label, Karluk red salmon, Alaska Packers Association, San Francisco. (Courtesy of the Pratt Museum, Homer, AK, 2004 [label image], and Captain Richard C. Sturgill, Drayton Harbor Maritime and Alaska Packers Association Museum, Blaine, WA [APA trademark])



Canoe Brand salmon can label, packed by Alaska Improvement Co., Karluk, Alaska. (Ralph and Terry Kovel, *The Label Made Me Buy It*, Crown Publishers, NY, 1998)



El Modelo Brand salmon can label, spring catch Alaska salmon, packed by Alaska Improvement Co., Karluk, Alaska. (Lantern Press, Seattle, WA)



Canoe Brand salmon can label, Alaska red salmon, packed by Alaska Packers Association, Karluk, Kodiak Island, Alaska. (Warren E. "Nick" Nickell, Vancouver, WA [label image], and Captain Richard C. Sturgill, Drayton Harbor Maritime and Alaska Packers Association Museum, Blaine, WA [APA trademark])



Kodiak Brand salmon can label, packed by Aleutian Islands Fishing & Mining Co., Kodiak Island, Alaska. (Lantern Press, Seattle, WA)



Kodiak Brand salmon can, Alaska red salmon, packed at Karluk, Alaska Packers Association, San Francisco, successors to Aleutian Island Fishing & Mining Co. (Karen Hofstad Collection, Petersburg, AK)



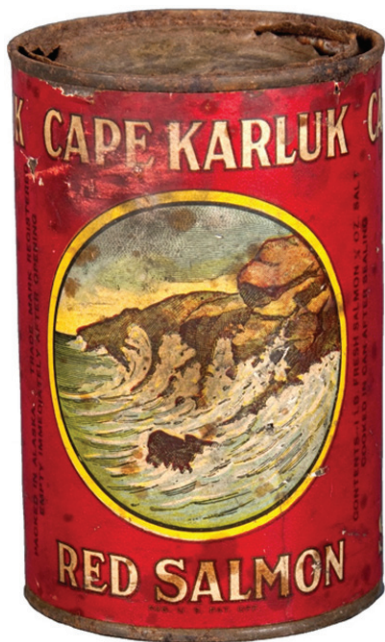


Alaska Packers Association headquarters plaque and logo, San Francisco. (National Park Service, San Francisco Maritime National Historical Park, San Francisco, CA, SAFR 20963 [plaque image], and Captain Richard C. Sturgill, Drayton Harbor Maritime and Alaska Packers Association Museum, Blaine, WA [APA trademark])



Coleman Flag Brand salmon crate, Alaska red salmon, packed at Kodiak Island, Alaska, by Alaska Packers Association. (Alaska State Museum, Juneau, AK, ASM 2005-20-1)





Cape Karluk Brand salmon can, Alaska red salmon. (Alaska State Museum, Juneau, AK, ASM 91-45-2)



Hume's Karluk Brand salmon can, Alaska red salmon, Hume Packing Co., at Karluk, Alaska. (Alaska State Museum, Juneau, AK, ASM 2002-13-1 [can image], and Captain Richard C. Sturgill, Drayton Harbor Maritime and Alaska Packers Association Museum, Blaine, WA [APA trademark])



Hume's Karluk Brand salmon crate, Alaska red salmon, packed by Alaska Packers Association. (Captain Richard C. Sturgill, Drayton Harbor Maritime and Alaska Packers Association Museum, Blaine, WA)



Rocky Point Brand salmon can label, spring pack Alaska salmon, packed by Hume Packing Co, at Karluk, Alaska. (Warren E. "Nick" Nickell, Vancouver, WA)



Hume's Karluk Brand salmon can label, red salmon, Alaska Packers Association, San Francisco. (Richard Lee Bottorff, South Lake Tahoe, CA [label image], and Captain Richard C. Sturgill, Drayton Harbor Maritime and Alaska Packers Association Museum, Blaine, WA [APA trademark])



Aurora Borealis Brand salmon can label, Alaska red salmon, Arctic Packing Co., Karluk, Alaska Packers Association, San Francisco. (Lantern Press, Seattle, WA [label image], and Captain Richard C. Sturgill, Drayton Harbor Maritime and Alaska Packers Association Museum, Blaine, WA [APA trademark])



Russian American Brand salmon can label, Alaska red salmon, put up by the Russian American Packing Co., Karluk, Alaska Packers Association, San Francisco. (Lantern Press, Seattle, WA [label image], and Captain Richard C. Sturgill, Drayton Harbor Maritime and Alaska Packers Association Museum, Blaine, WA [APA trademark])



Gold Medal Brand salmon can label, fresh red Alaska salmon, Kodiak Packing Co., packed by Alaska Packers Association, Karluk, Alaska. (Lantern Press, Seattle, WA [label image], and Captain Richard C. Sturgill, Drayton Harbor Maritime and Alaska Packers Association Museum, Blaine, WA [APA trademark])



Seward Brand salmon can, Alaska red salmon, packed at Karluk, Alaska Packers Association, San Francisco. (Karen Hofstad Collection, Petersburg, AK)



Seward Brand salmon crate, Alaska red salmon, packed at Karluk by Alaska Packers Association. (Maine Maritime Museum, Bath, ME [crate image] and Captain Richard C. Sturgill, Drayton Harbor Maritime and Alaska Packers Association Museum, Blaine, WA [APA trademark])





Cruiser Brand salmon can, Alaska salmon, packed at Karluk, Alaska Packers Association, San Francisco. (Karen Hofstad Collection, Petersburg, AK [can image], and Captain Richard C. Sturgill, Drayton Harbor Maritime and Alaska Packers Association Museum, Blaine, WA [APA trademark])



Pioneer Fishery salmon can label, Karluk red salmon, Hume Bro's & Hume's, Pacific Packing & Navigation Co., New York, San Francisco, Seattle. (Karen Hofstad Collection, Petersburg, AK)



Peerless Brand salmon can label, Karluk red salmon, packed by Hume Brothers and Hume, Uyak Bay, Alaska. (Warren E. "Nick" Nickell, Vancouver, WA)



Little Commodore Brand salmon can label, Karluk red salmon, packed by Hume Brothers and Hume, Uyak Bay, Alaska. (Warren E. "Nick" Nickell, Vancouver, WA)



Primer Brand salmon can label, Karluk red salmon, packed by Hume Brothers and Hume, Uyak Bay, AK. (Warren E. "Nick" Nickell, Vancouver, WA)



Karluk Primer Brand salmon can label, Alaska red salmon, Hume Bro's & Hume's, packed by Northwestern Fisheries Co., Seattle. (Warren E. "Nick" Nickell, Vancouver, WA)



