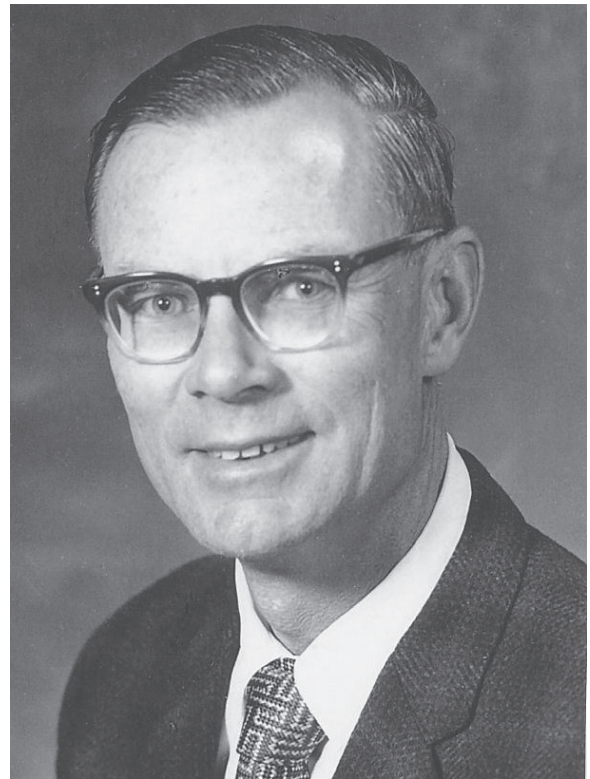


## About the Authors

### Richard Gard

Richard Gard's interest in fishes began when he spent eight years as a Research Zoologist at the University of California Berkeley's field station at Sagehen Creek. He then moved to the Auke Bay Laboratory in Juneau, Alaska where he headed the sockeye salmon research program at Karluk Lake. After a few years on the fisheries faculty at Colorado State University, he moved back to Alaska to start a fisheries program at the University of Alaska, Juneau, and is now an Emeritus Professor of Fisheries. He has authored numerous papers on fishes and gray whales. Dr. Gard has BA, MA, and PhD degrees in Zoology from the University of California, Berkeley.



### Richard Lee Bottorff

Richard Lee Bottorff has been fascinated with the biology of rivers and lakes since childhood and has worked as an aquatic biologist in Alaska, California, and Colorado for over 40 years. His biological research has included studies of springs, rivers, lakes, and watersheds, including their hydrology, fishes, and aquatic invertebrates and plants. Richard has an MS in Fisheries from the University of Alaska and a PhD in Aquatic Ecology from the University of California, Davis. (Photo by Loren D. Bottorff, 2012)

