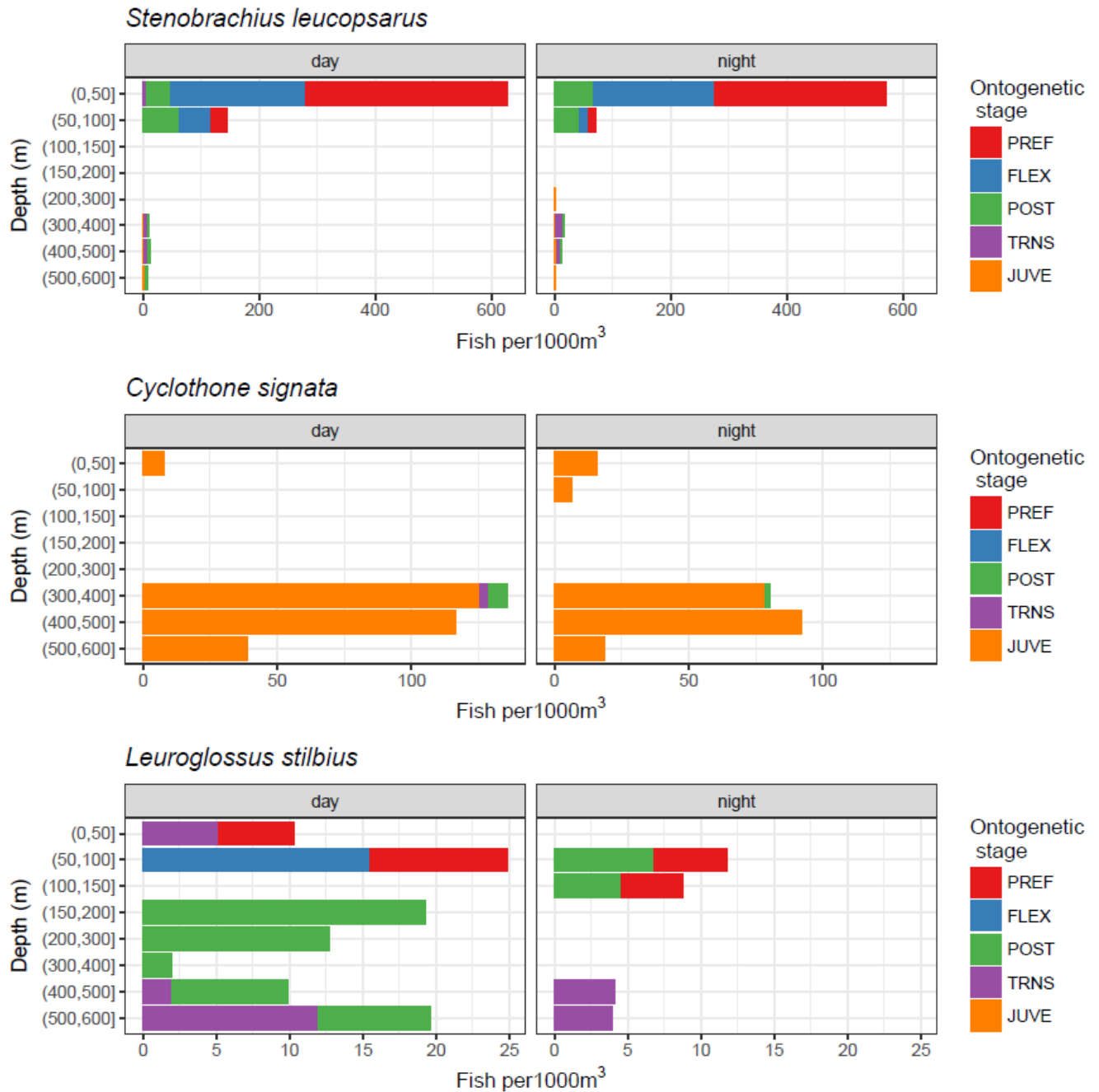
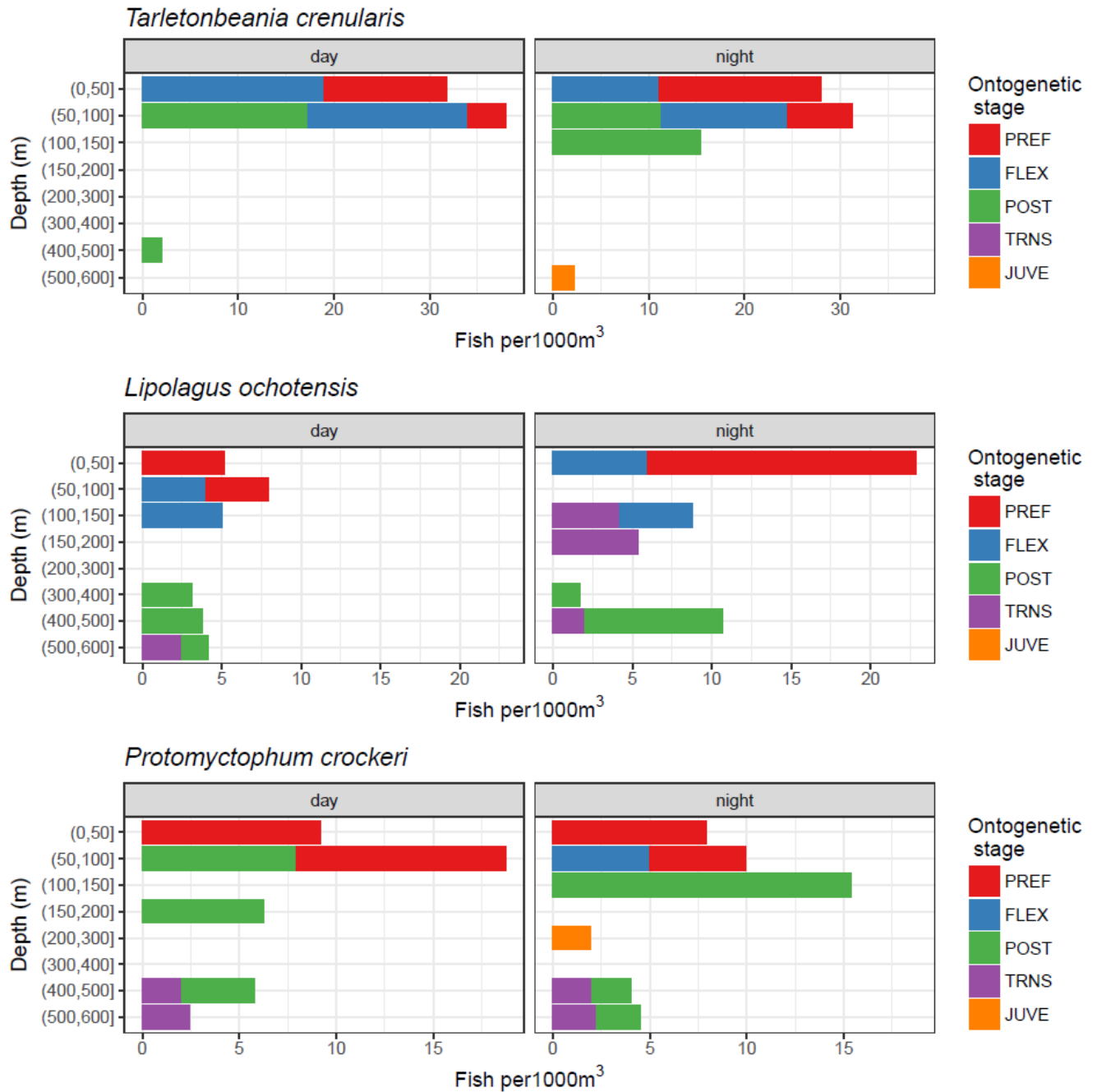


Supplementary Figure 1. Time series of the number of species (richness) (A) and abundance (B) of larval mesopelagic fishes collected in the CalCOFI Bongo tows at the four selected stations, during the spring CalCOFI cruises from 1984 – 1994.



Supplementary Figure 2. Stage-specific distribution of the most abundant species of mesopelagic fish (*Stenobranchius leucopsarus*), the second most abundant species (*Cyclothone signata*), and the third most abundant species (*Leuroglossus stilbius*) collected in the day and night MOCNESS samples from Station 108.



Supplementary Figure 3. Stage-specific distribution of the fourth most abundant species of mesopelagic fish (*Tarletonbeania crenularis*), the fifth most abundant species (*Lipolagus ochotensis* and *Protomyctophum crockeri*) collected in the day and night MOCNESS samples from Station 108.