

Supplementary Figures:

Meta-population Modeling of Narwhals, *Monodon
monoceros*, in East Canada and West Greenland

Lars Witting, Thomas Doniol-Valcroze, Roderick C. Hobbs,
Susanne Ditlevsen, and Mads Peter Heide-Jørgensen

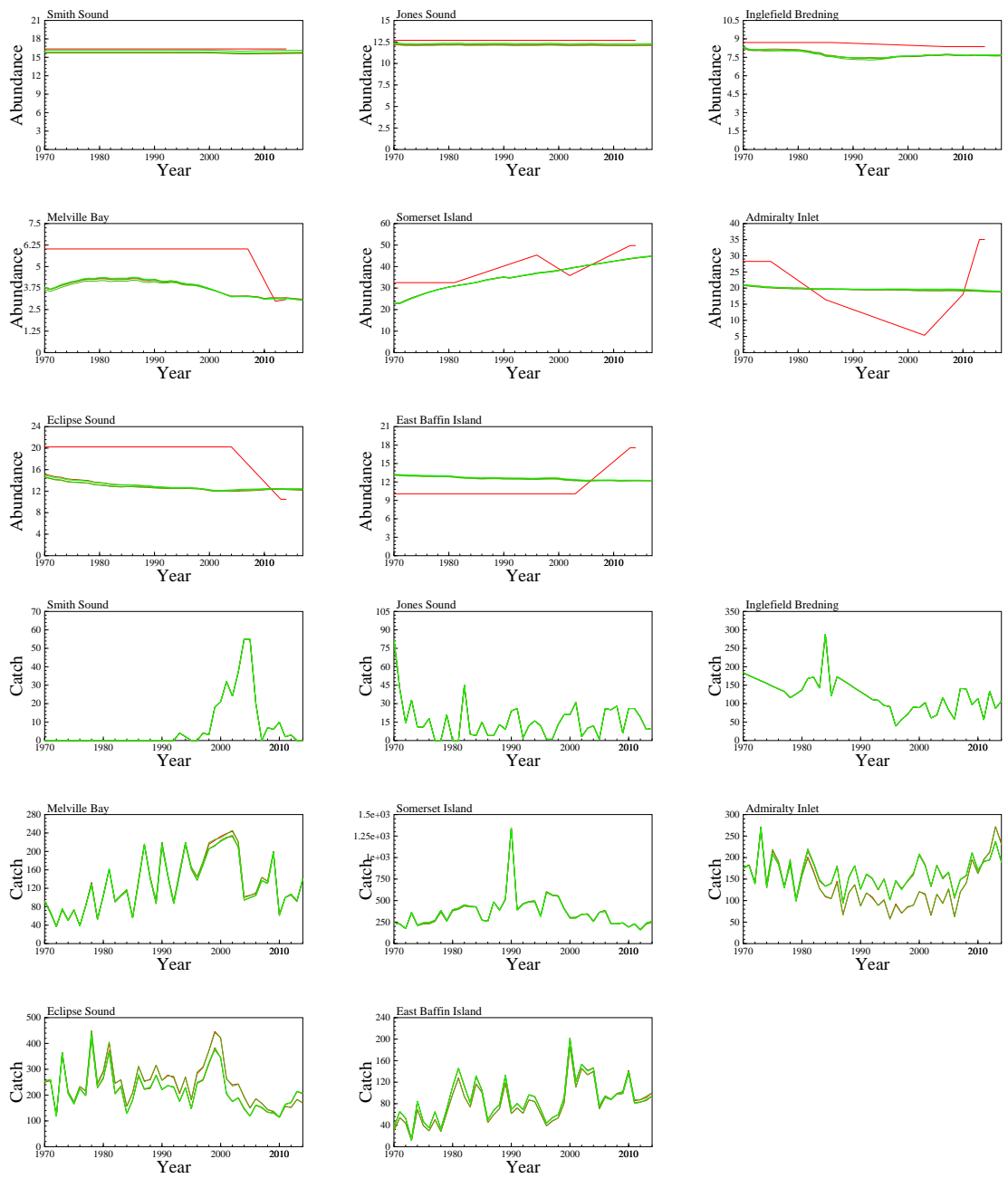


Figure S1: The convergence of the abundance trajectories and catch histories as a function of the number of iterations of the complete meta population model, with iteration number increasing with colour transitions from clear red to clear green. Abundance in thousands.

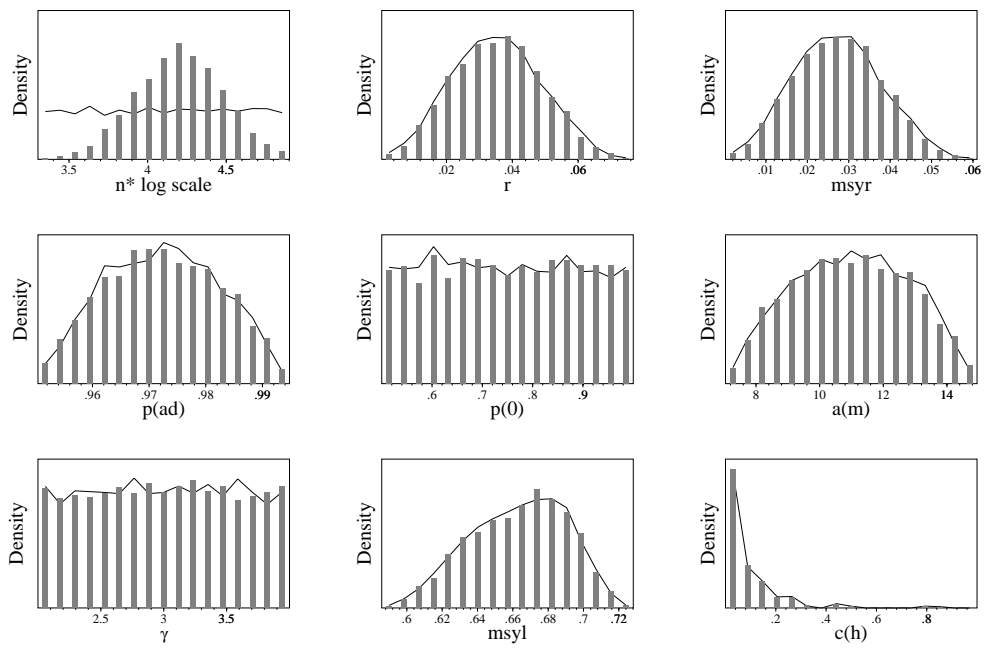


Figure S2: **Smith Sound** Realised prior (curve) and posterior (bars) distributions.

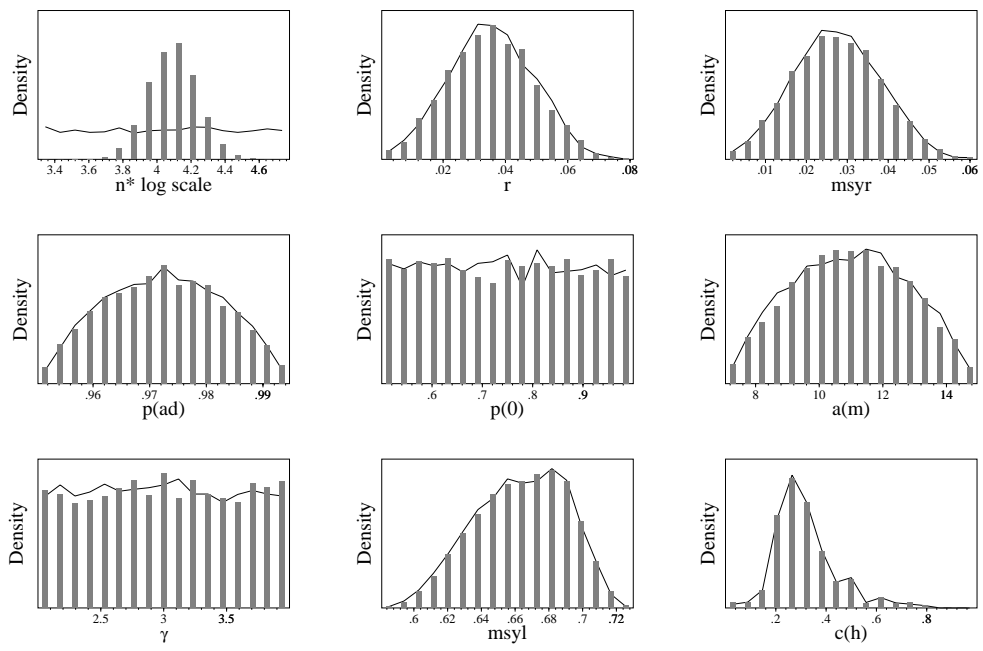


Figure S3: **Jones Sound** Realised prior (curve) and posterior (bars) distributions.

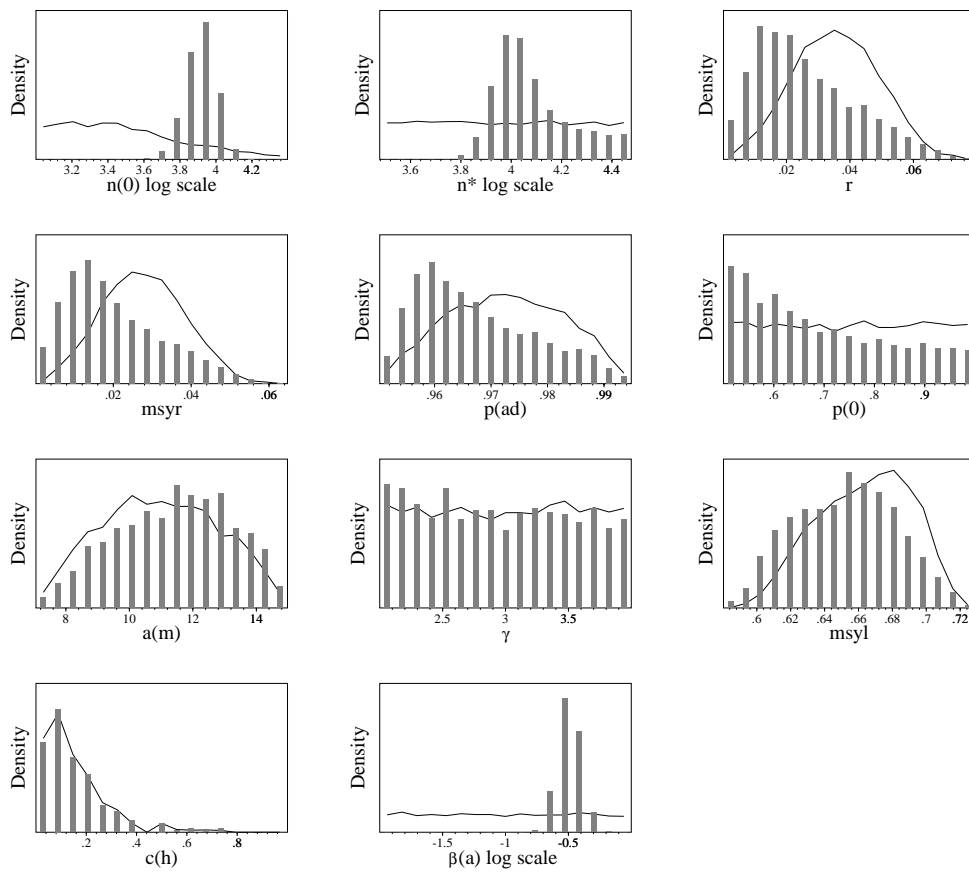


Figure S4: **Inglefield Breeding** Realised prior (curve) and posterior (bars) distributions.

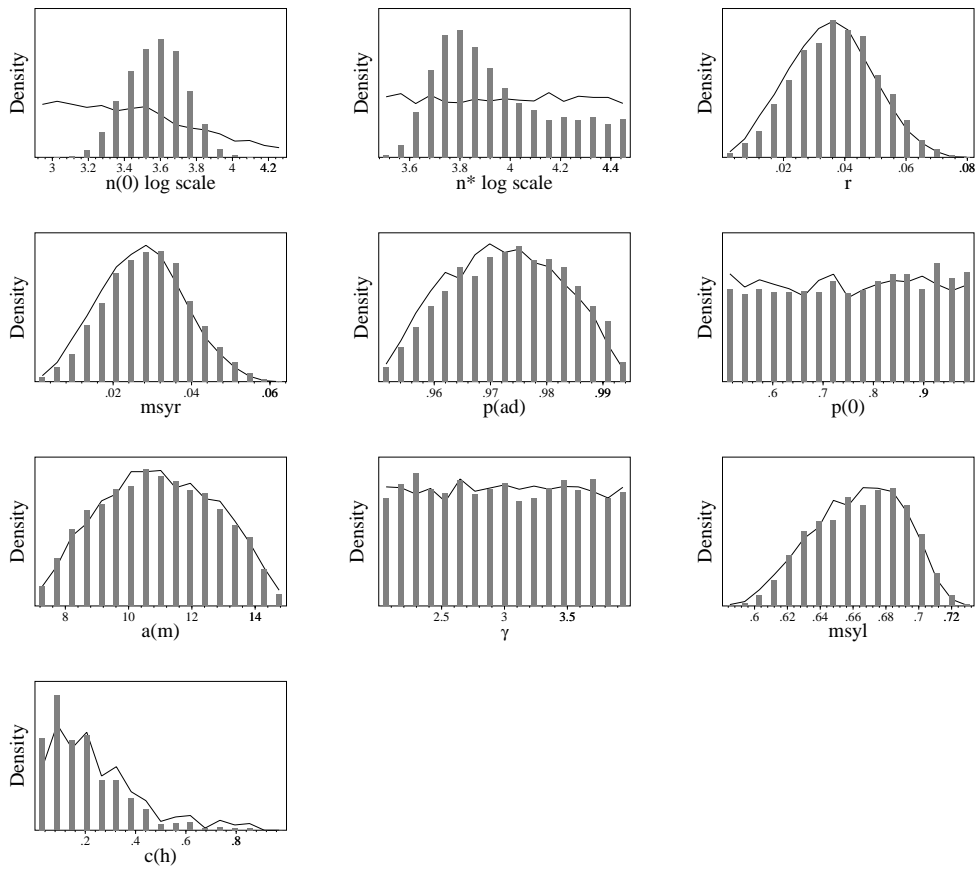


Figure S5: Melville Bay Realised prior (curve) and posterior (bars) distributions.

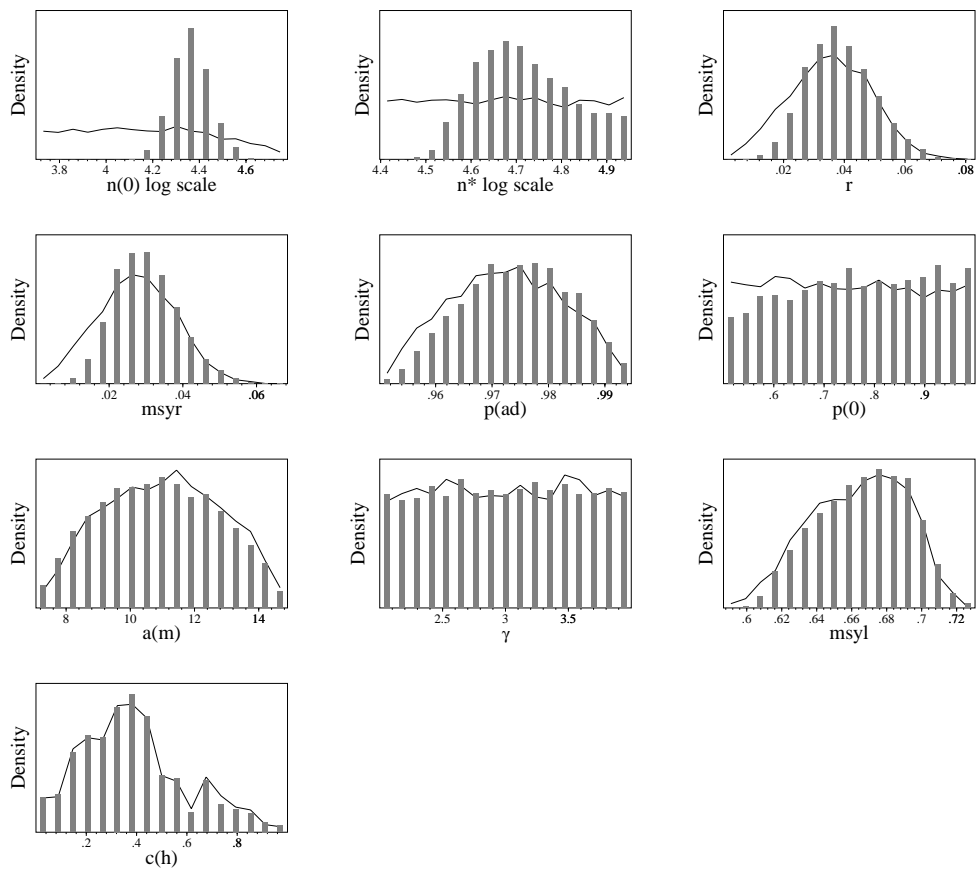


Figure S6: **Somerset Island** Realised prior (curve) and posterior (bars) distributions.

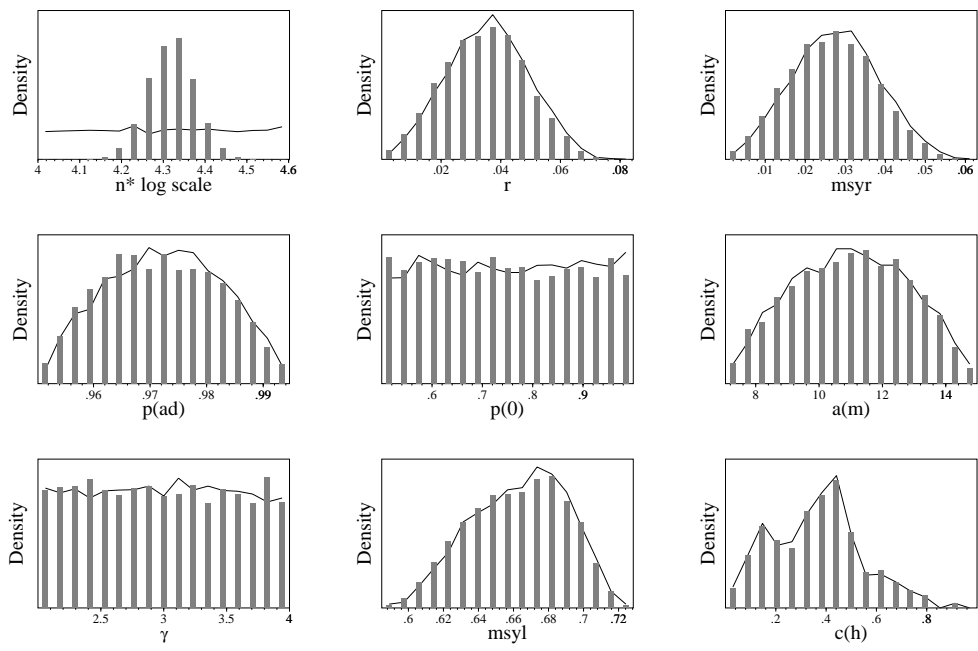


Figure S7: Admiralty Inlet Realised prior (curve) and posterior (bars) distributions.

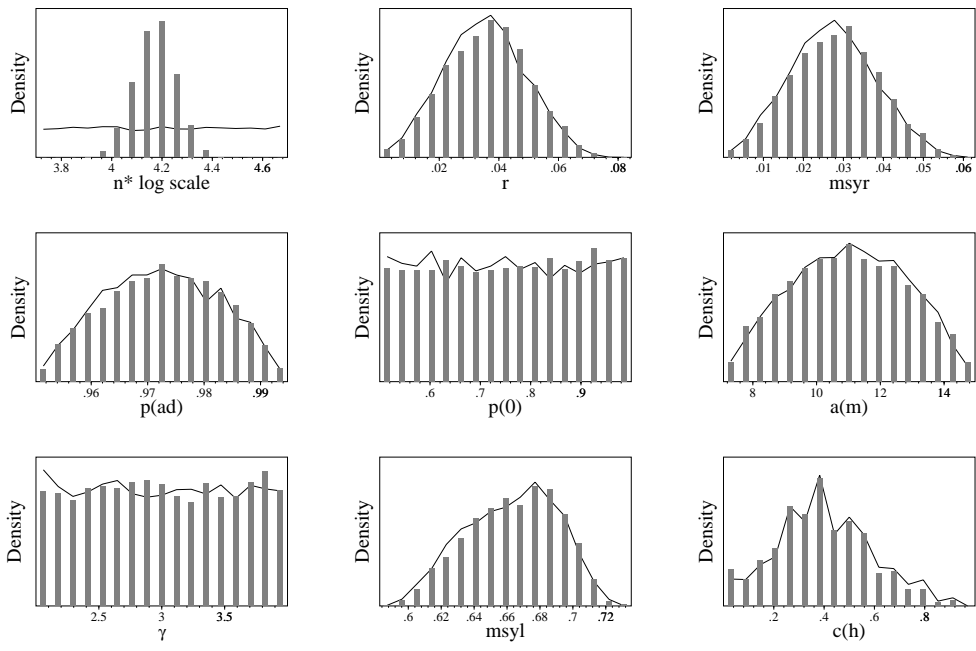


Figure S8: **Eclipse Sound** Realised prior (curve) and posterior (bars) distributions.

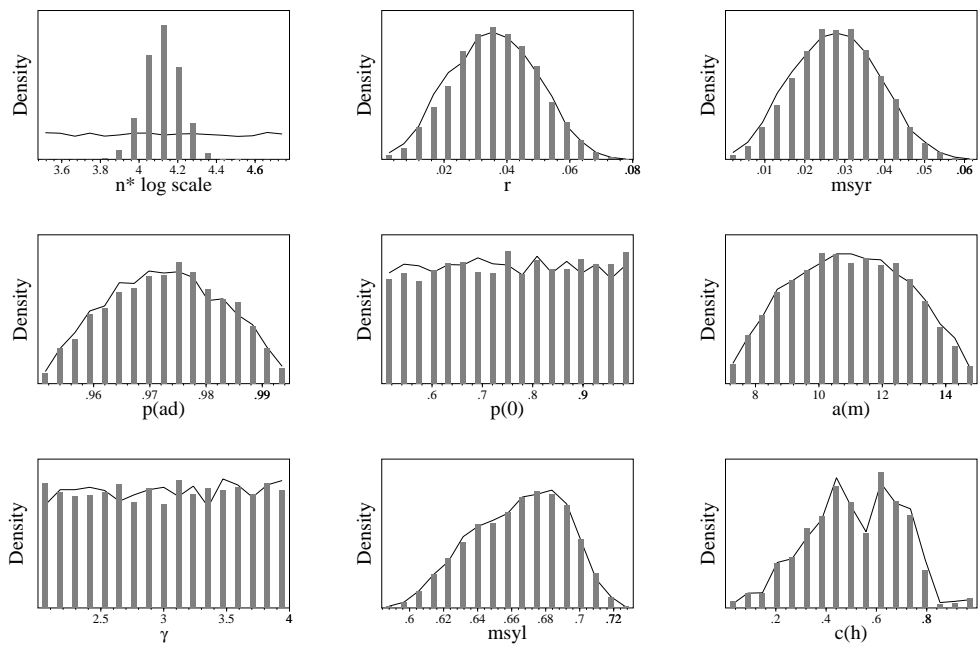


Figure S9: **East Baffin Island** Realised prior (curve) and posterior (bars) distributions.