

**Regional Maps of Locations Mentioned
in Global Review of the Conservation
Status of Monodontid Stocks**

These maps provide the locations of the geographic features mentioned in the Global Review of the Conservation Status of Monodontid Stocks.

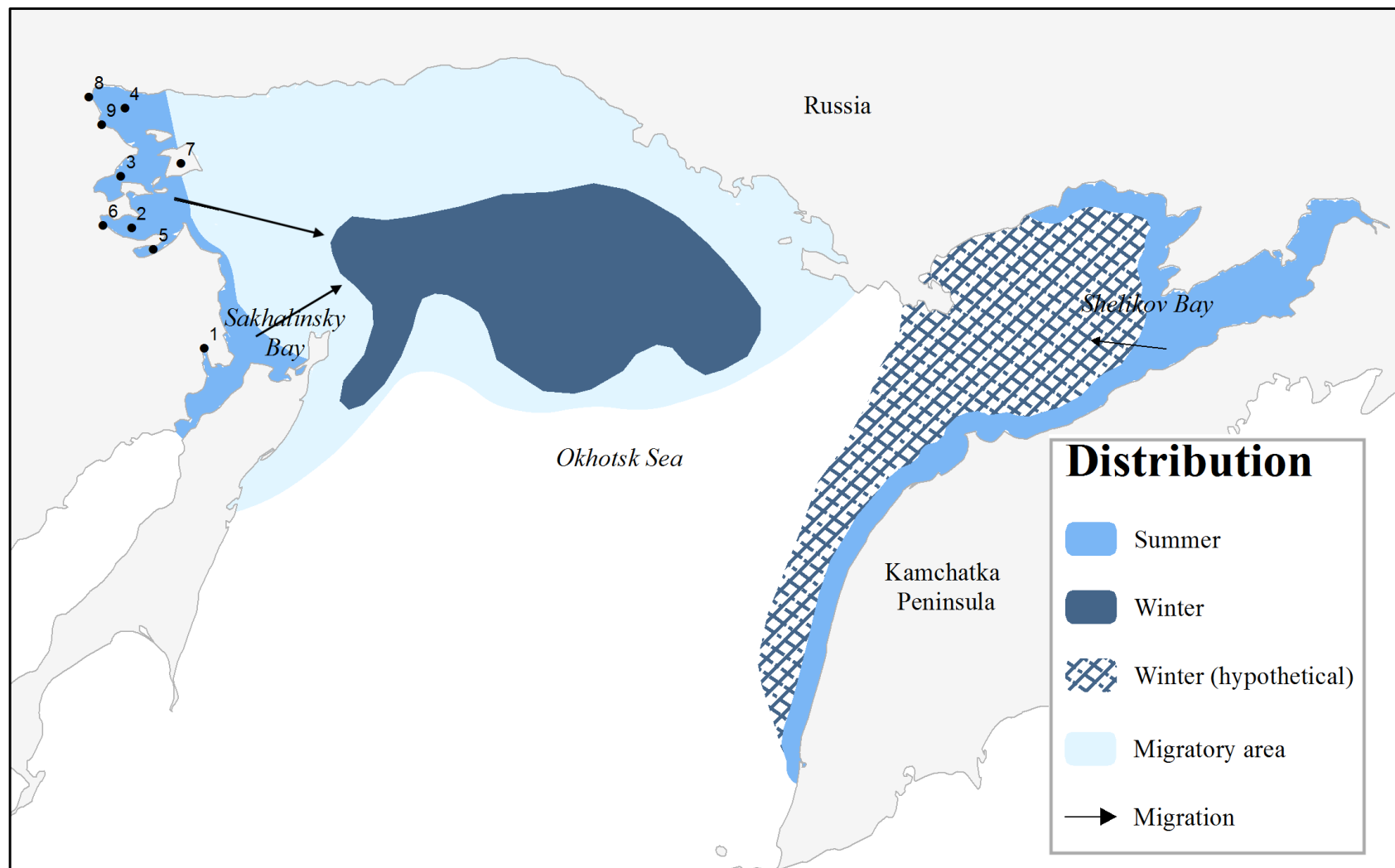


Figure 1. Locations associated with beluga stocks of the Okhotsk Sea (beluga stocks 1-5). Numbered locations are: (1) Amur River, (2) Ulbansky Bay, (3) Tugursky Bay, (4) Uds kaya Bay, (5) Nikolaya Bay, (6) Ulban River, (7) Big Shantar Island, (8) Uda River, (9) Torom River.

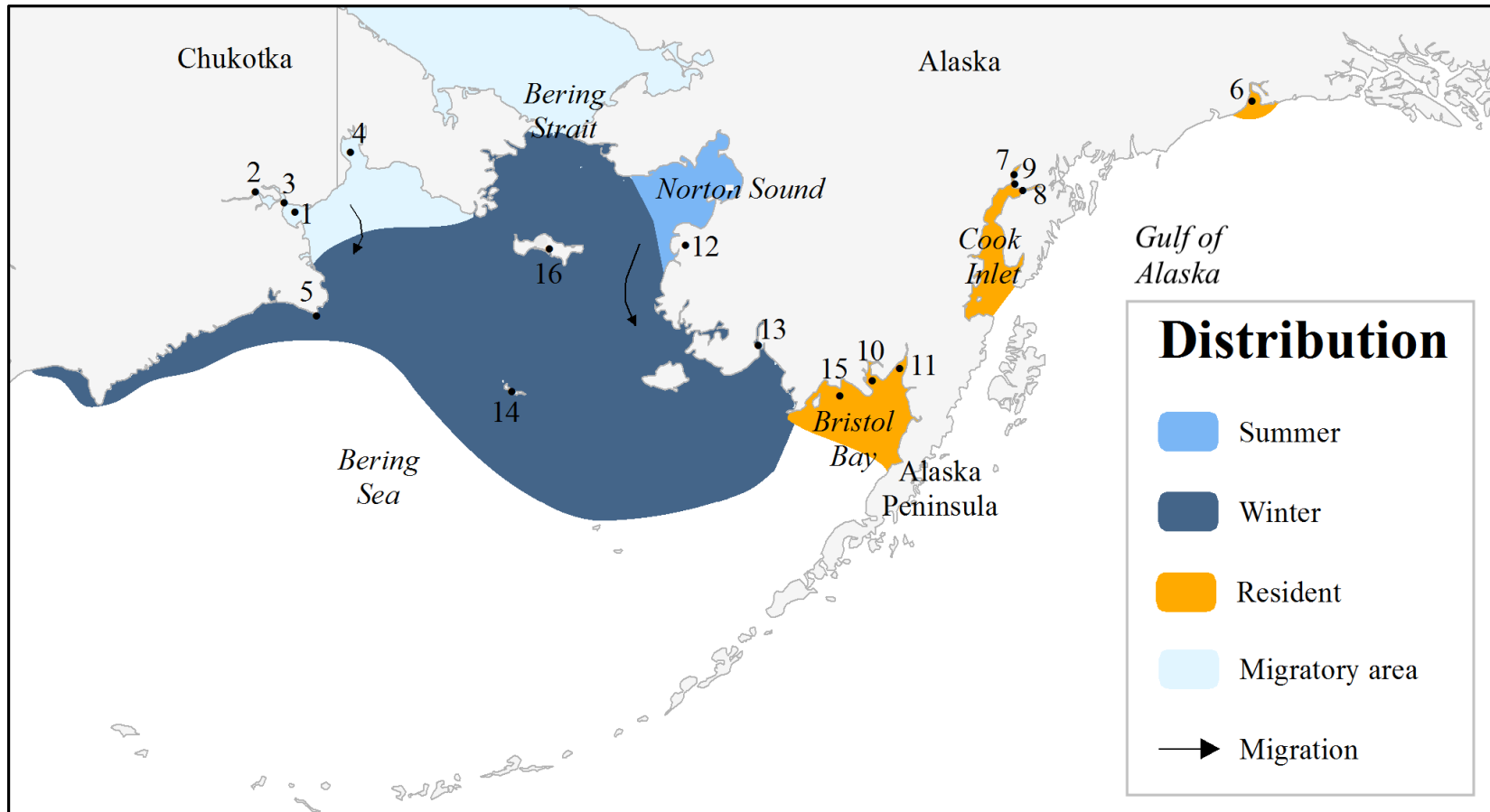


Figure 2. Locations associated with beluga stocks of the Bering Sea and Gulf of Alaska (beluga stocks 6-9). Numbered locations are: (1) Anadyr River Estuary, (2) Anadyr River, (3) Anadyr City, (4) Kresta Bay, (5) Cape Navarin, (6) Yakutat Bay, (7) Knik Arm, (8) Turnagain Arm, (9) Anchorage, (10) Nushagak Bay, (11) Kvichak Bay, (12) Yukon River, (13) Kuskokwim River, (14) Saint Matthew Island, (15) Round Island, (16) St. Lawrence Island.

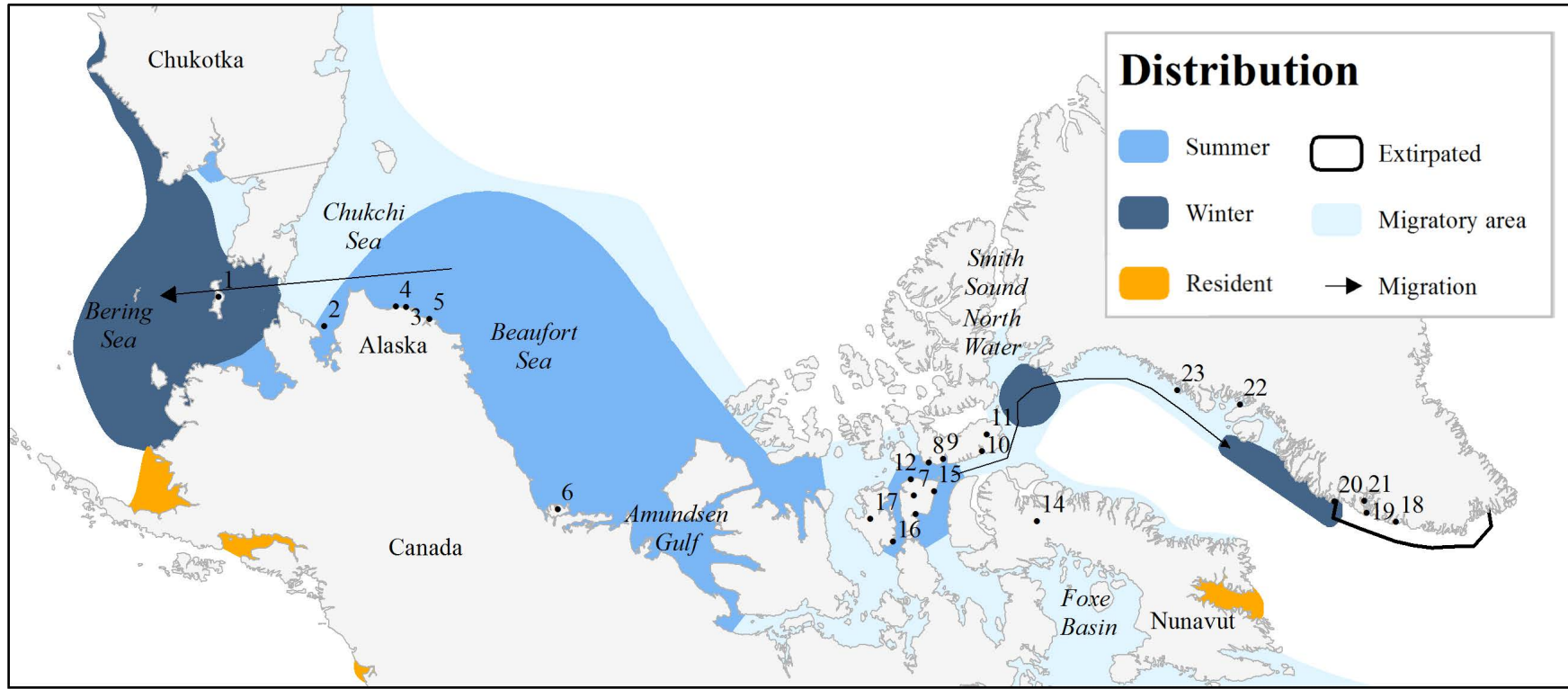


Figure 3. Locations associated with beluga stocks of the Chukchi and Beaufort Seas, Canadian Arctic and West Greenland (beluga stocks 10-12 and 19). Numbered locations are: (1) St. Lawrence Island, (2) Kotzebue Sound, (3) Kasegaluk Lagoon, (4) Point Lay, (5) Wainwright, (6) Mackenzie River, (7) Somerset Island, (8) Radstock Bay, (9) Maxwell Bay, (10) Croker Bay, (11) Devon Island, (12) Cunningham Inlet, (13) Creswell Bay, (14) Mary River Mine, (15) Elwin Bay, (16) Coningham Bay, (17) Prince of Wales Island, (18) Qeqertarsuaat, (19) Nuuk, (20) Maniitsoq, (21) Godthåb Fjord, (22) Uummannaq, (23) Upernavik.

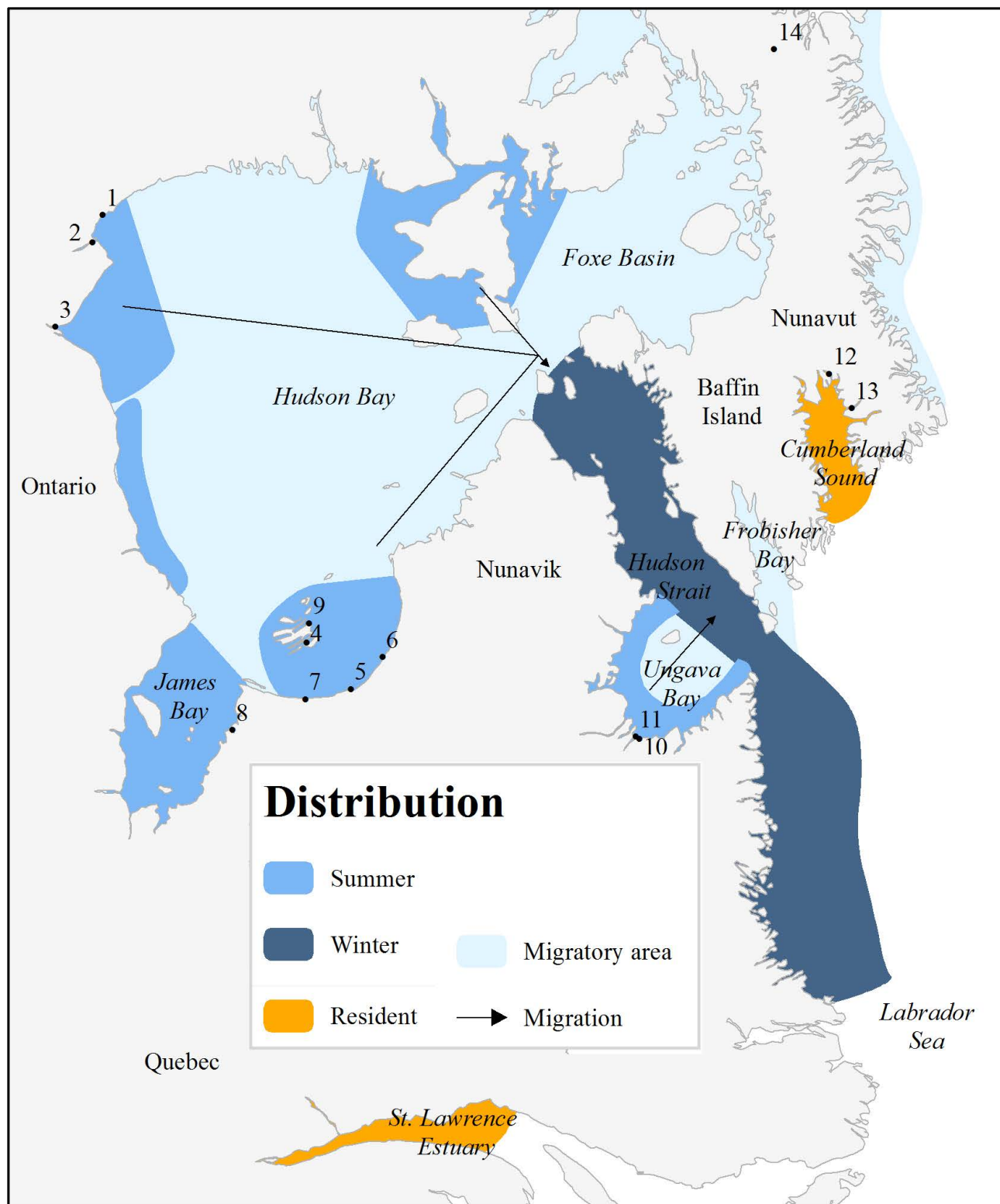


Figure 4. Locations associated with beluga stocks of subarctic eastern Canada, Hudson Bay, Ungava Bay, Cumberland Sound and St. Lawrence Estuary (beluga stocks 13-18). Numbered locations are: (1) Seal River, (2) Churchill River, (3) Nelson River, (4) Belcher Islands, (5) Little Whale River, (6) Nastapoka River, (7) Great Whale River, (8) La Grande River, (9) Sanikiluaq, (10) Mucalic River, (11) Whale River, (12) Clearwater Fiord, (13) Pangnirtung, (14) Mary River Mine.

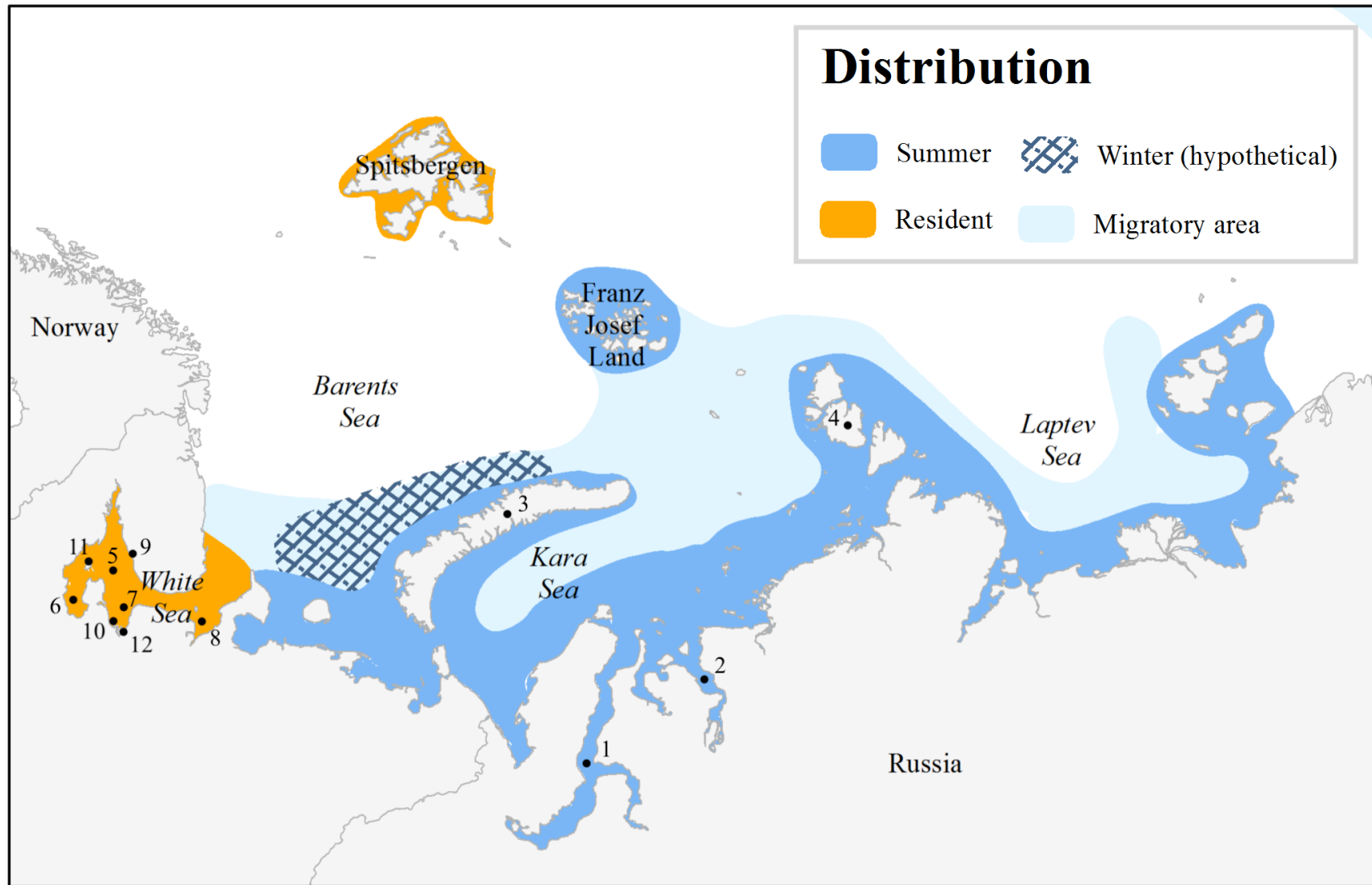


Figure 5. Locations associated with beluga stocks of Svalbard and eastern Russia (beluga stocks 20-22). Numbered locations are: (1) Ob Gulf, (2) Yenisey Gulf, (3) Novaya Zemlya, (4) Severnaya Zemlya, (5) White Sea, (6) Onezhsky Bay, (7) Dvinskoy Bay, (8) Mezen'sky Bay, (9) Varzuga River, (10) Severnaya Dvina River, (11) Bolshoy Solovetsky Island, (12) Arkhangelsk. No winter area is shown for the Kara and Laptev seas due to lack of information.

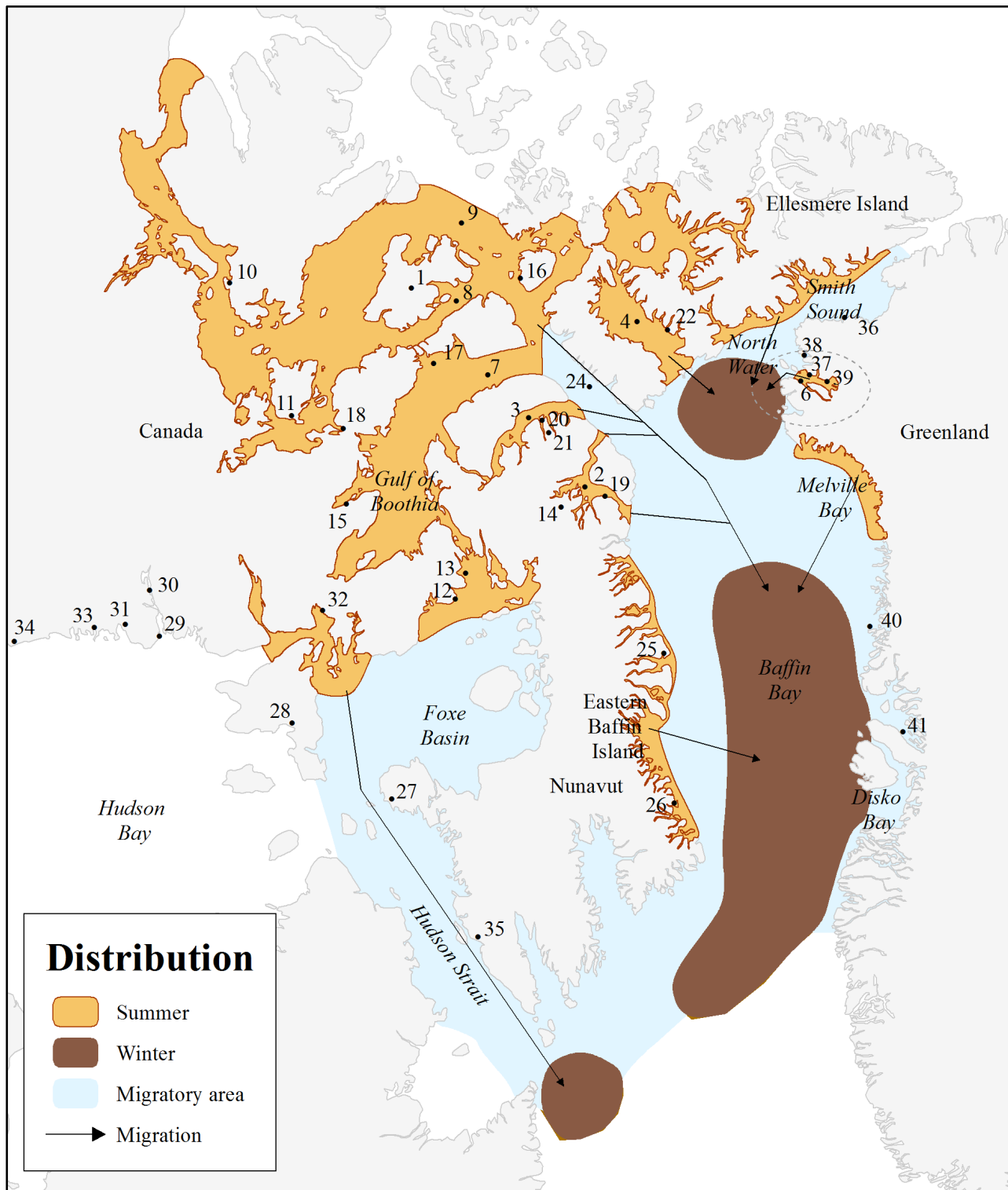


Figure 6. Locations associated with narwhal stocks of eastern Canada and West Greenland (narwhal stocks 1-9). Numbered locations are: (1) Somerset Island, (2) Eclipse Sound, (3) Admiralty Inlet, (4) Jones Sound, (6) Inglefield Bredning, (7) Prince Regent Inlet, (8) Peel Sound, (9) Barrow Strait, (10) Cambridge Bay, (11) Gjoa Haven, (12) Hall Beach, (13) Igloodik, (14) Baffinland-Mary River, (15) Kugaaruk, (16) Rolute, (17) Creswell Bay, (18) Taloyoak, (19) Pond Inlet, (20) Arctic Bay, (21) Nanisivik, (22) Grise Fiord, (23) Cape D'Urville, (24) Lancaster Sound, (25) Clyde River, (26) Qikitarjuak, (27) Cape Dorset, (28) Coral Harbour, (29) Chesterfield Inlet, (30) Baker Lake, (31) Rankin Inlet, (32) Repulse Bay, (33) Whale Cove, (34) Arviat, (35) Kimmirut, (36) Renselaer Bay, (37) Qaanaaq, (38) Siorapaluk, (39) Qeqertat, (40) Upernavik, (41) Uummannaq.

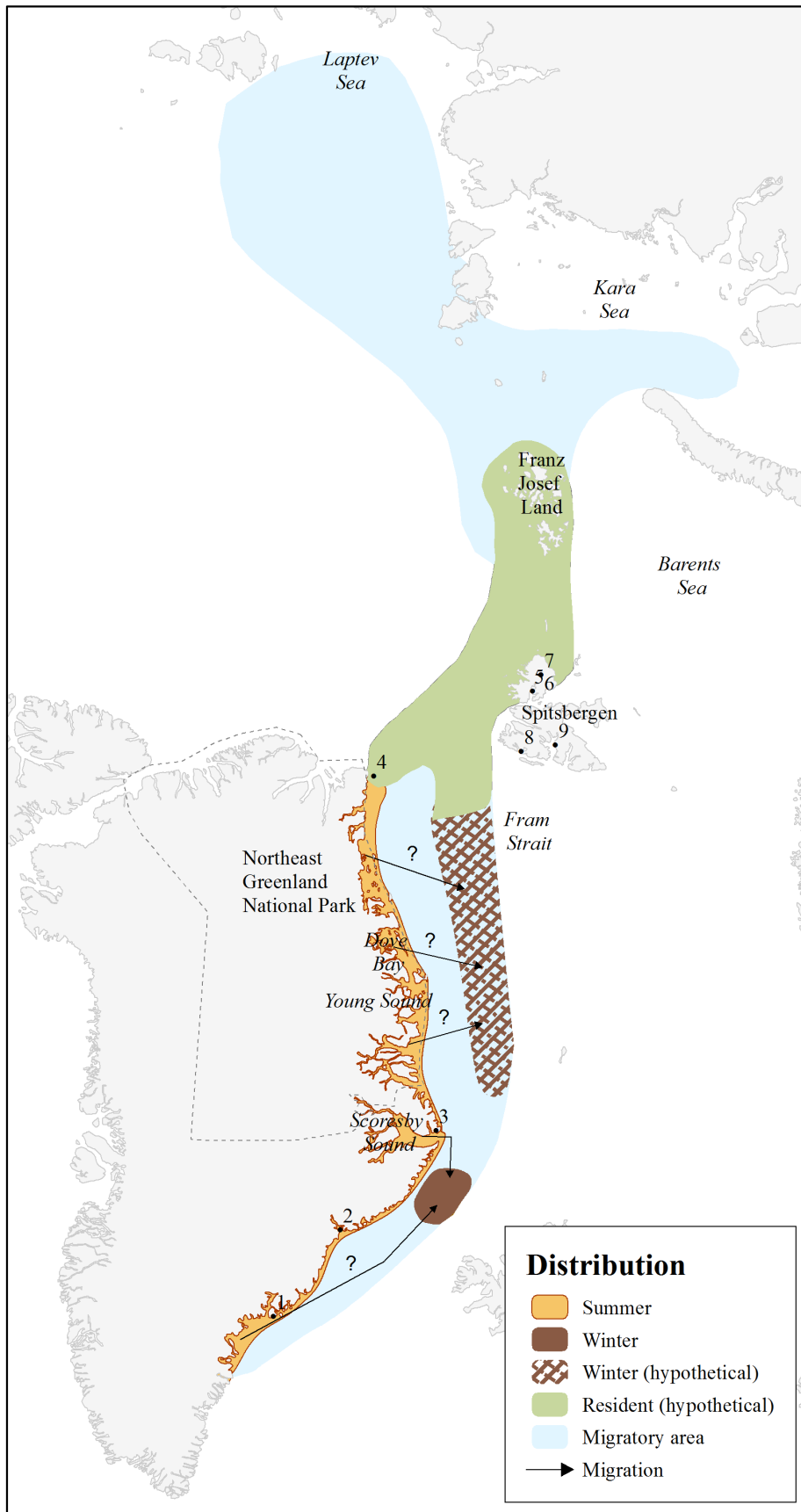


Figure 7. Locations associated with narwhal stocks of East Greenland, Svalbard and eastern Russia (narwhal stocks 10-12). Numbered locations are: (1) Tasiilaq fiords, (2) Kangerlussuaq, (3) Ittoqqortoormiit, (4) Nordost Rundingen, (5) Wahlenberg fiord, (6) Nordaustlandet, (7) Hinlopenstretet, (8) Kongsfjorden, (9) Adventfjorden.